

LEATHERS

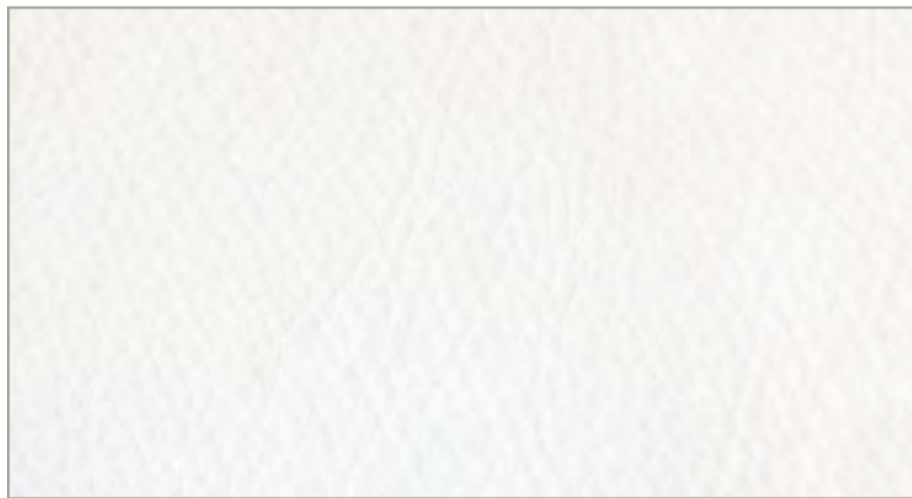


pelli | leathers
tessuti | fabrics
materiali | materials
coordinati | matching colour

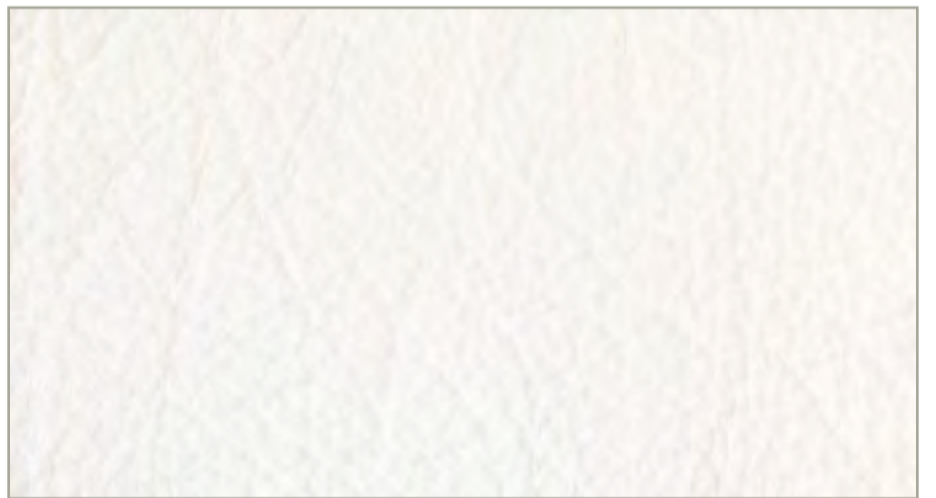
PELLE | LEATHER CAT. E



E1535



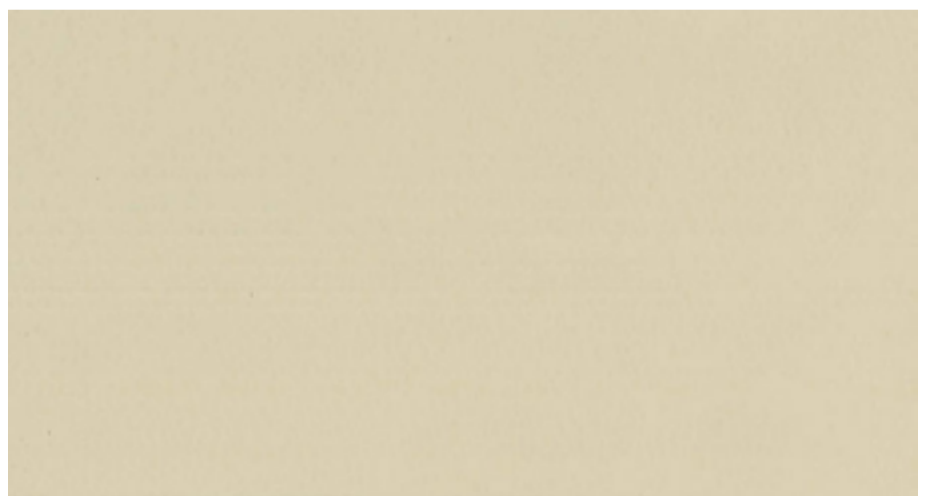
E19 DOLLARO



E506 BUFALO



E15



E06

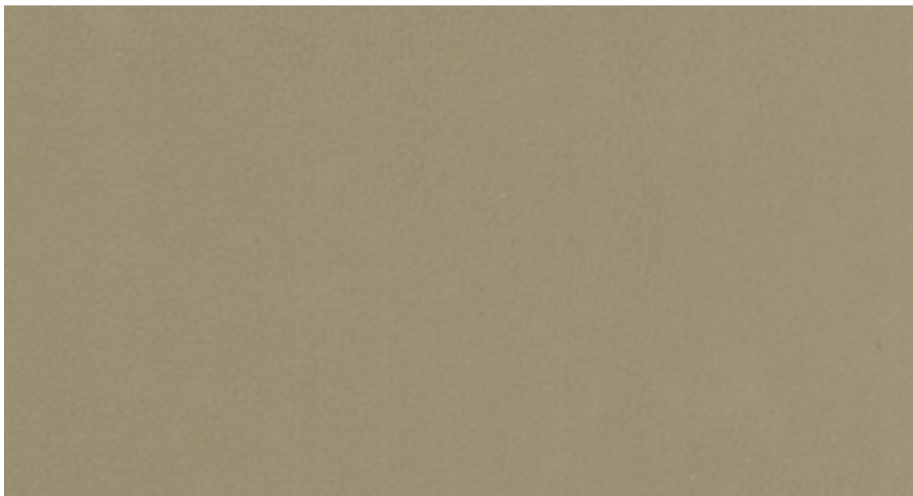
PELLE | LEATHER CAT. E



E01



E PANNA



E02



E05



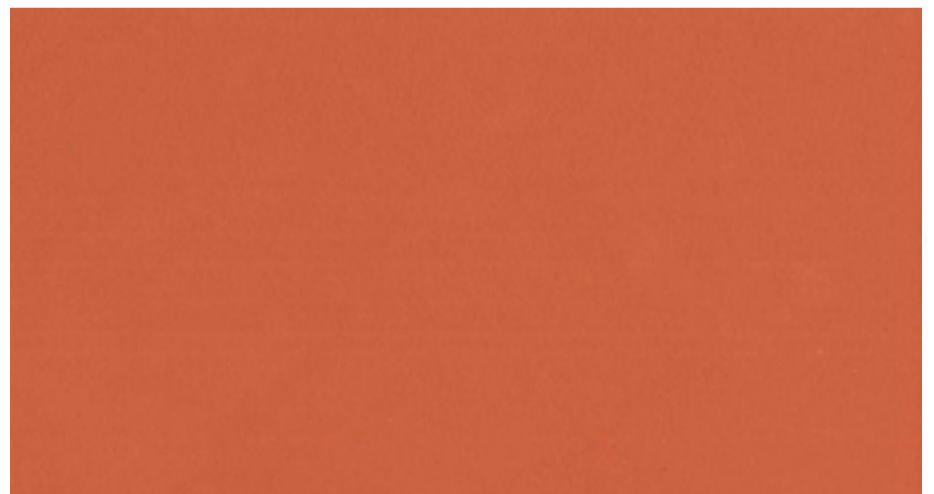
E12



E504 BUFALO

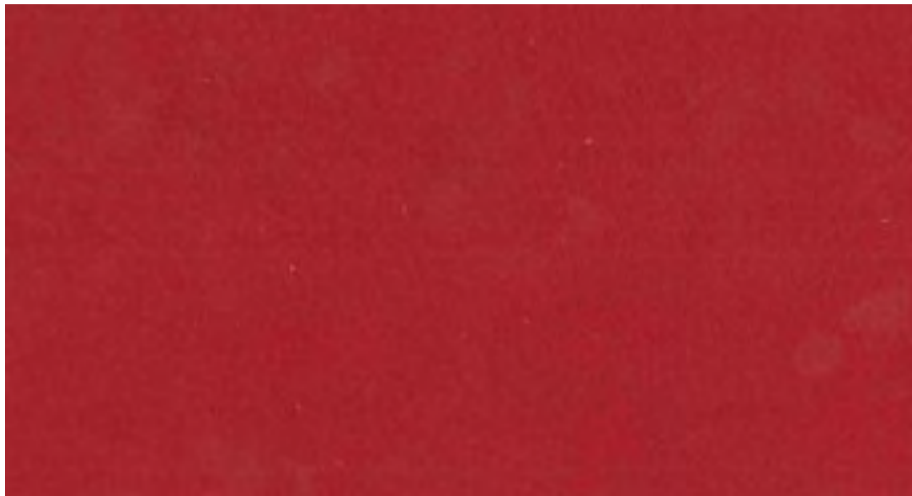


E1007



E09

PELLE | LEATHER CAT. E



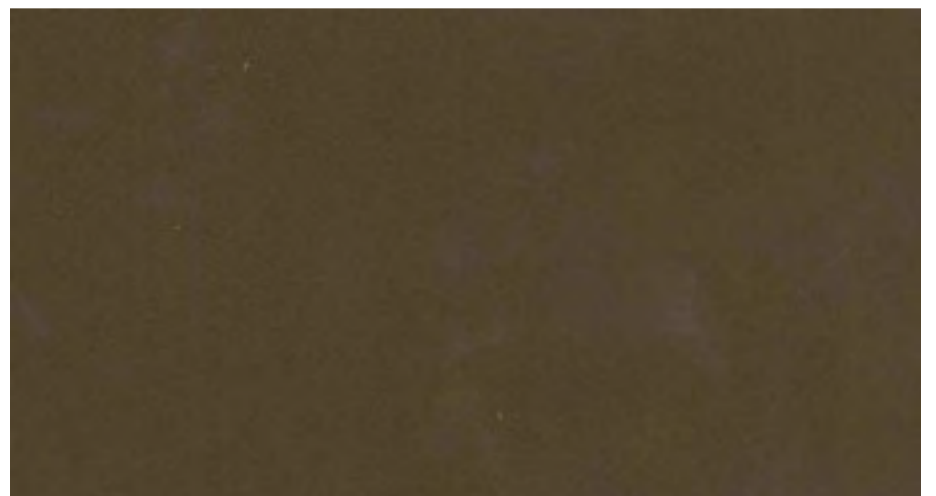
E17



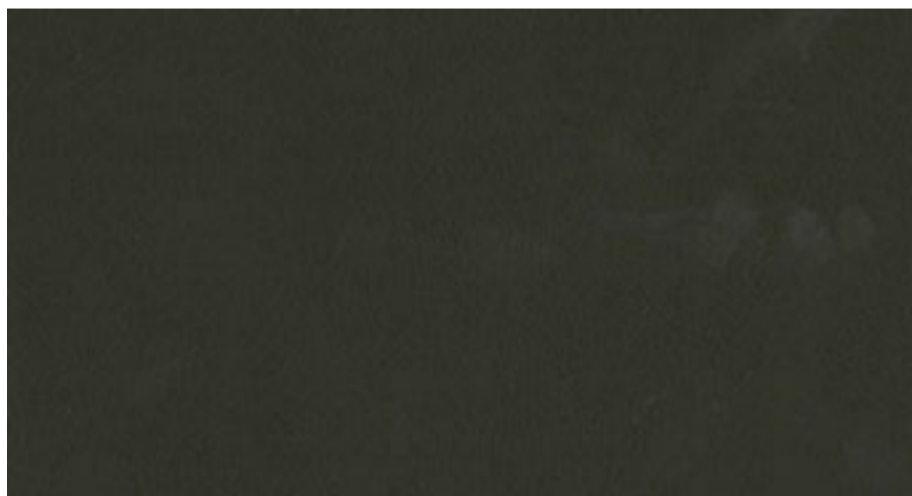
E04



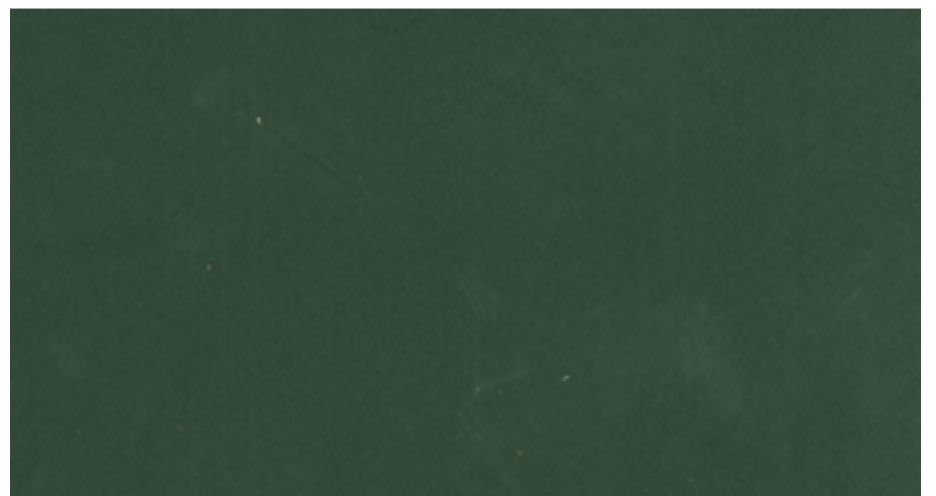
E13



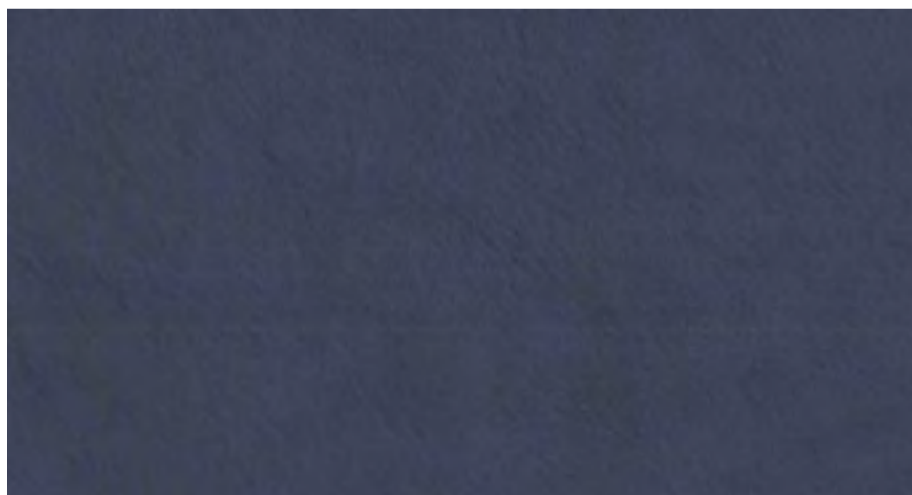
E499



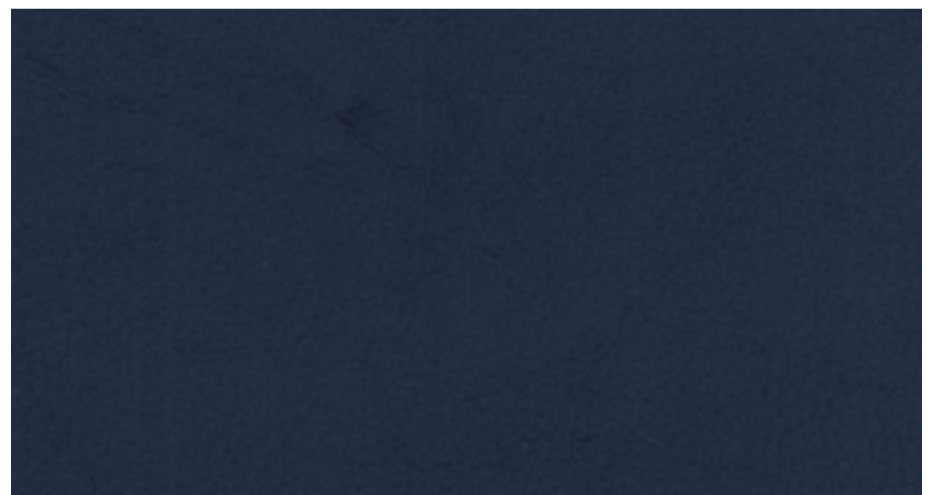
E1010



E14

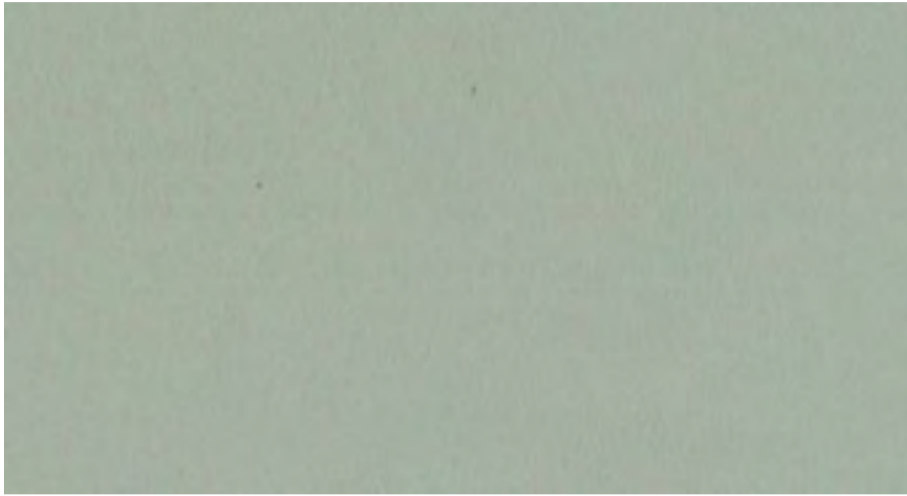


E210



E18

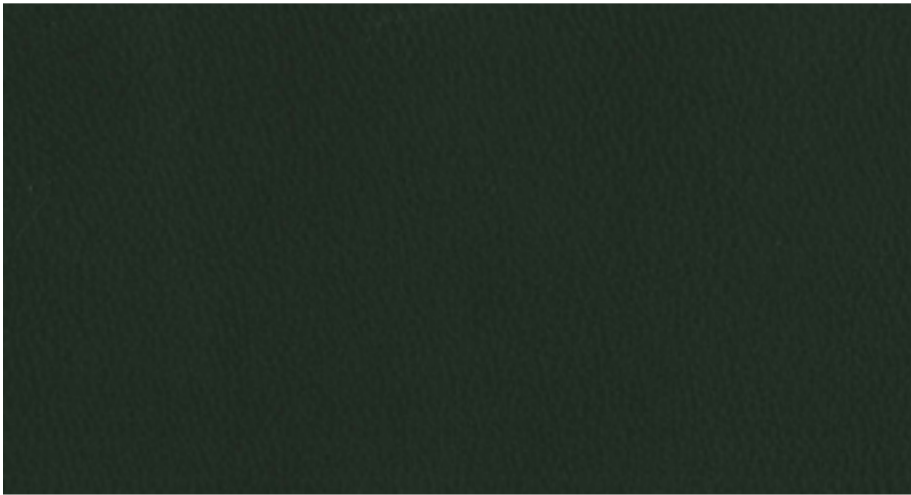
PELLE | LEATHER CAT. E



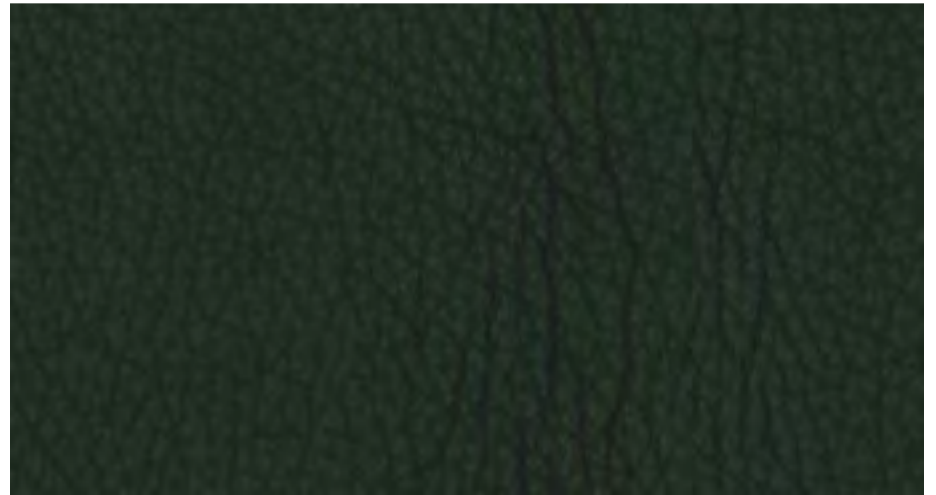
E03



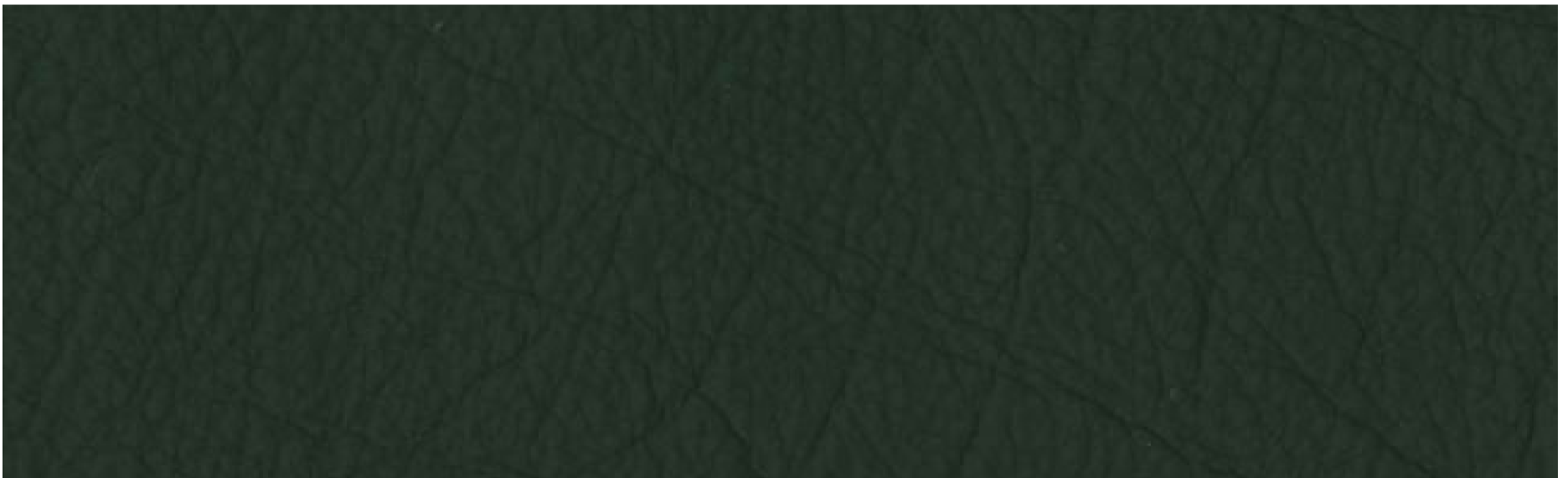
E28



E1500



E DOLLARO



E505 BUFALO

PELLE | LEATHER CAT. F - ULTRASOFT



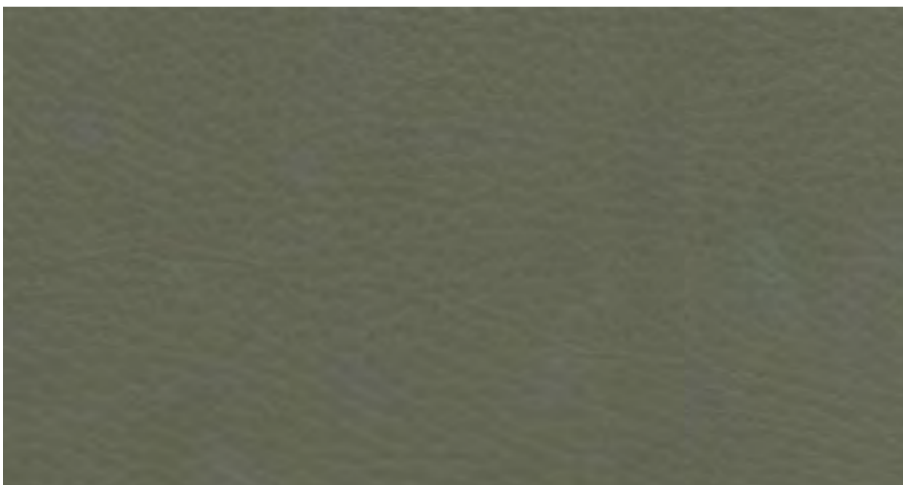
F92129



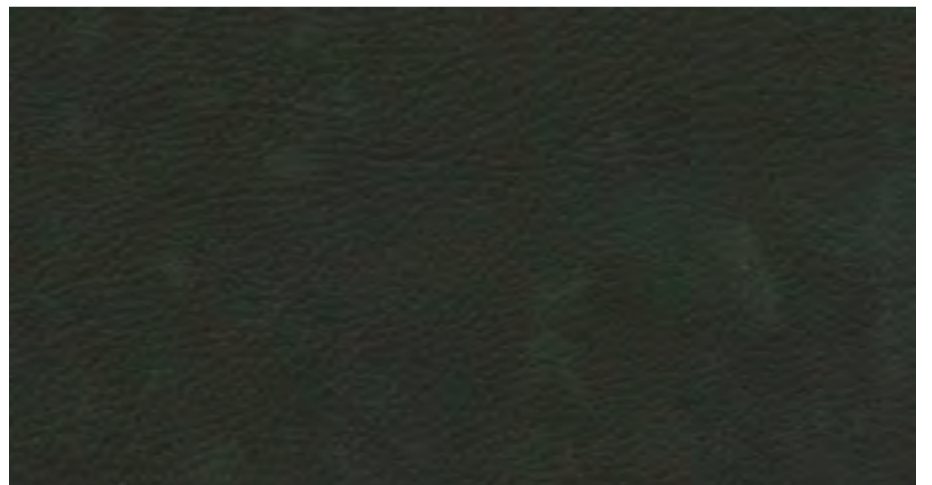
F92134



F92126



F92128

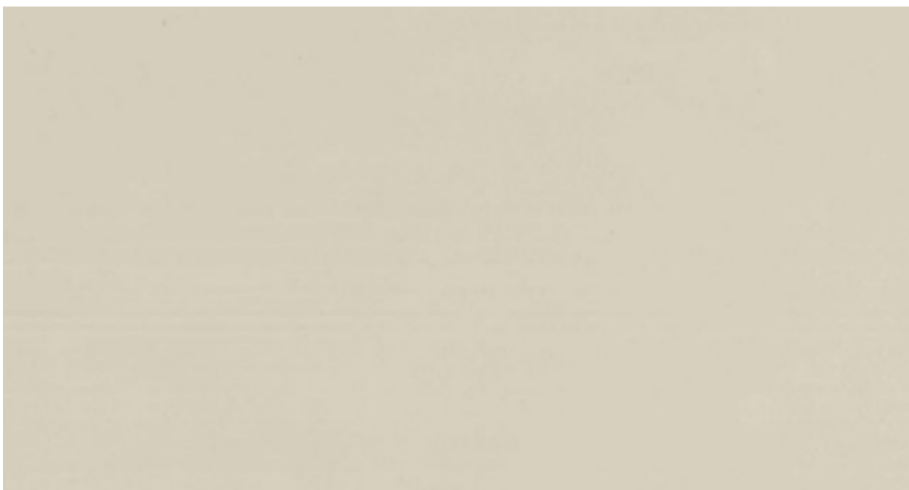


F92127

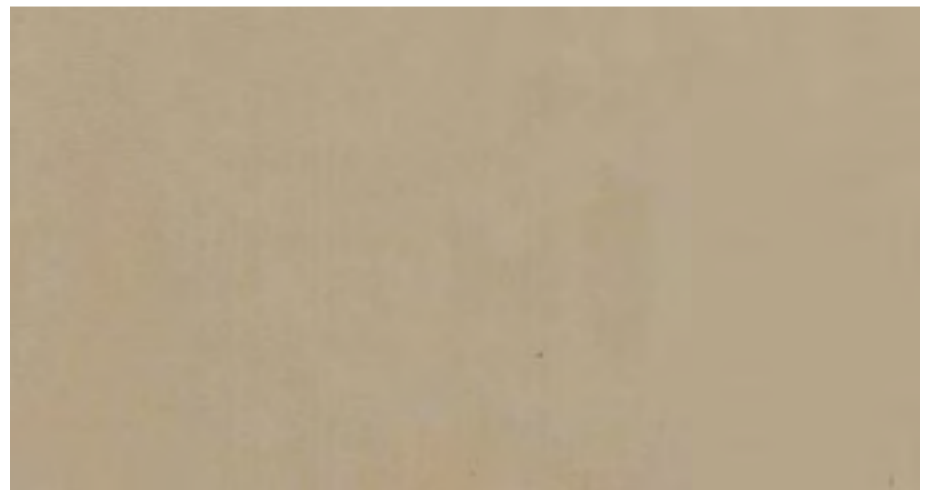
PELLE | LEATHER CAT. F - ULTRASOFT



F92135



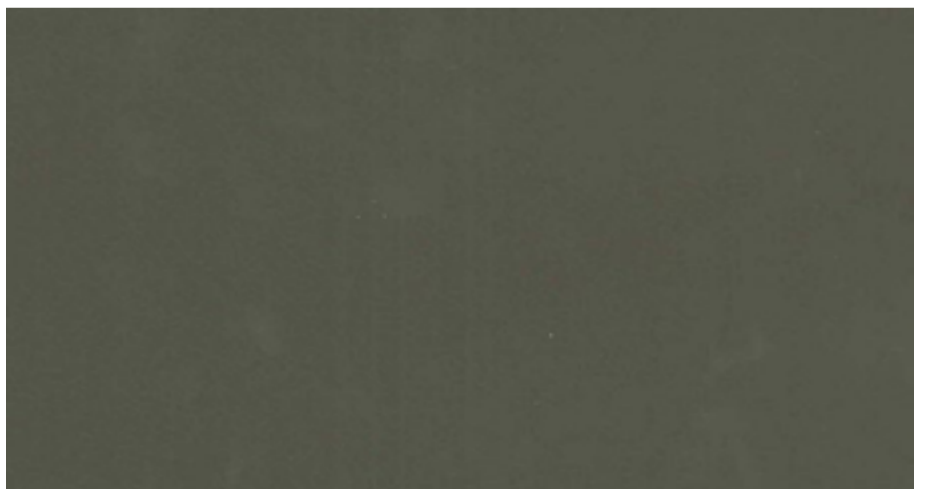
F92130



F92123



F92131



F92132

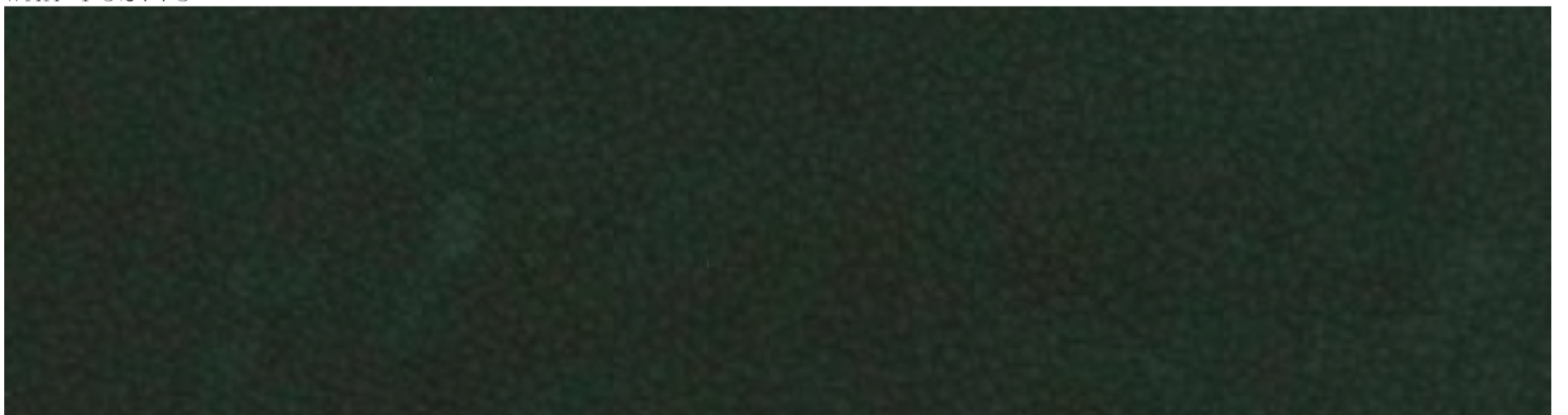
PELLE | LEATHER CAT. F - CERATA / WAX



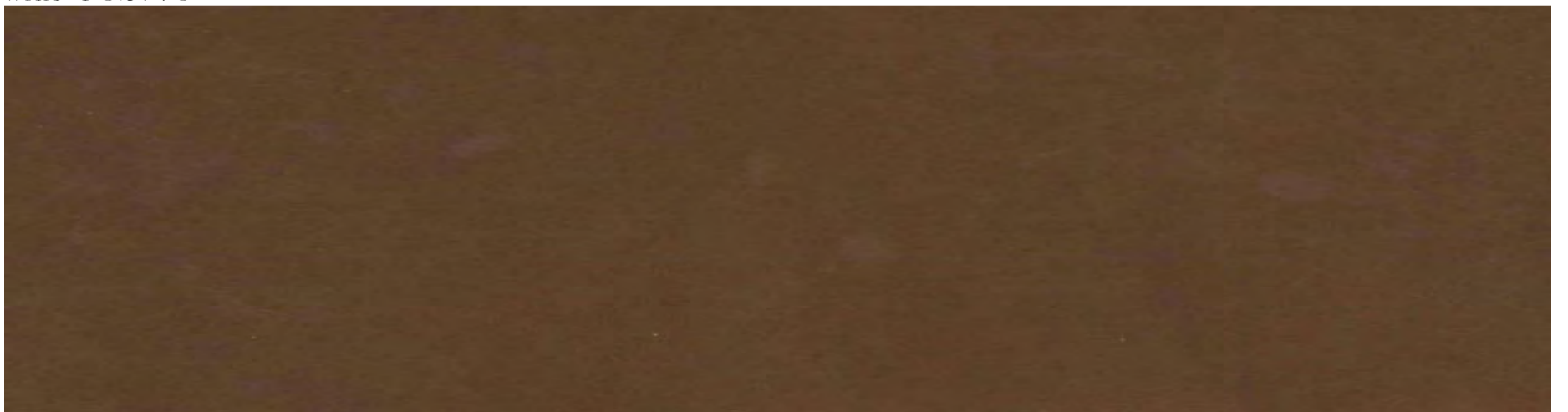
WAX F92111



WAX F92115



WAX F92116

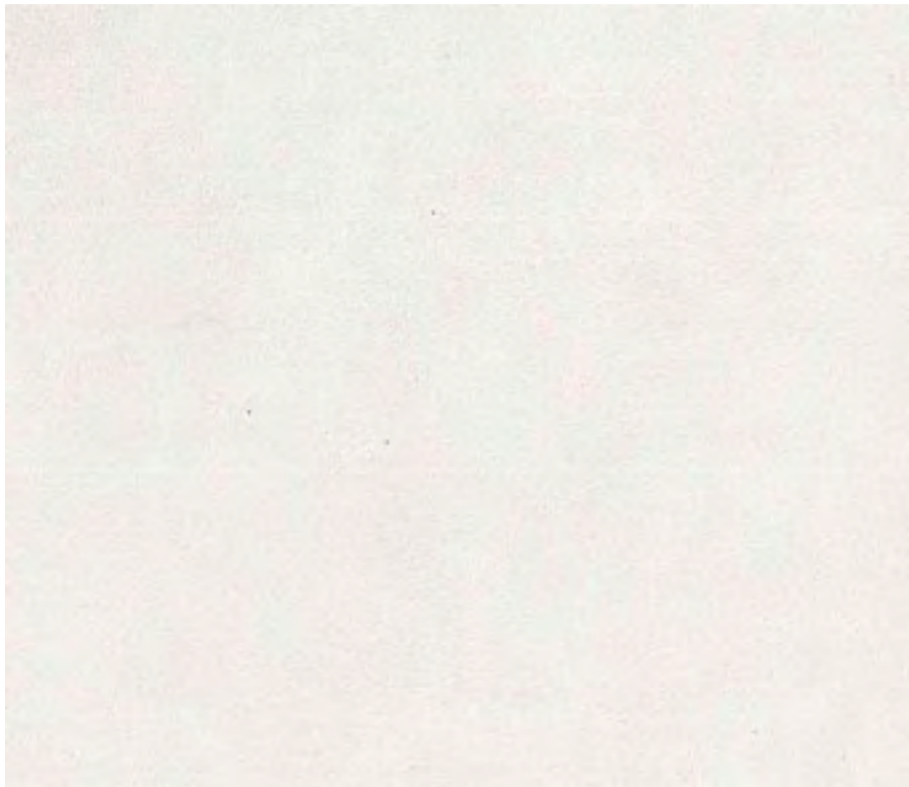


WAX F92118

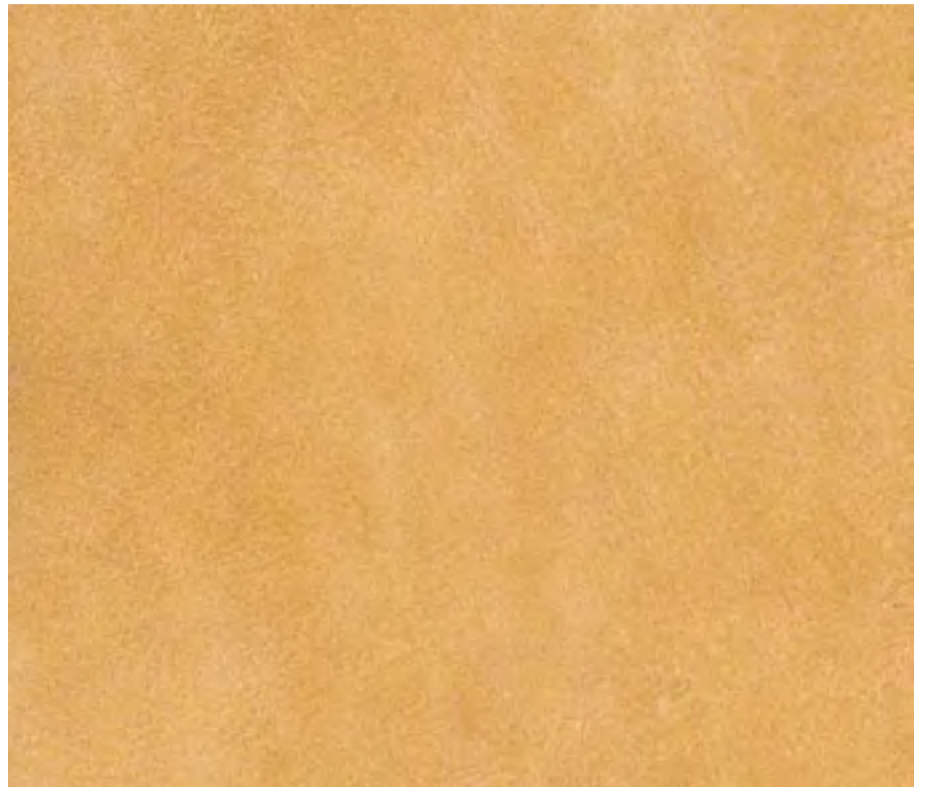


Pelle naturale trattata a cera
Natural wax-treated leather

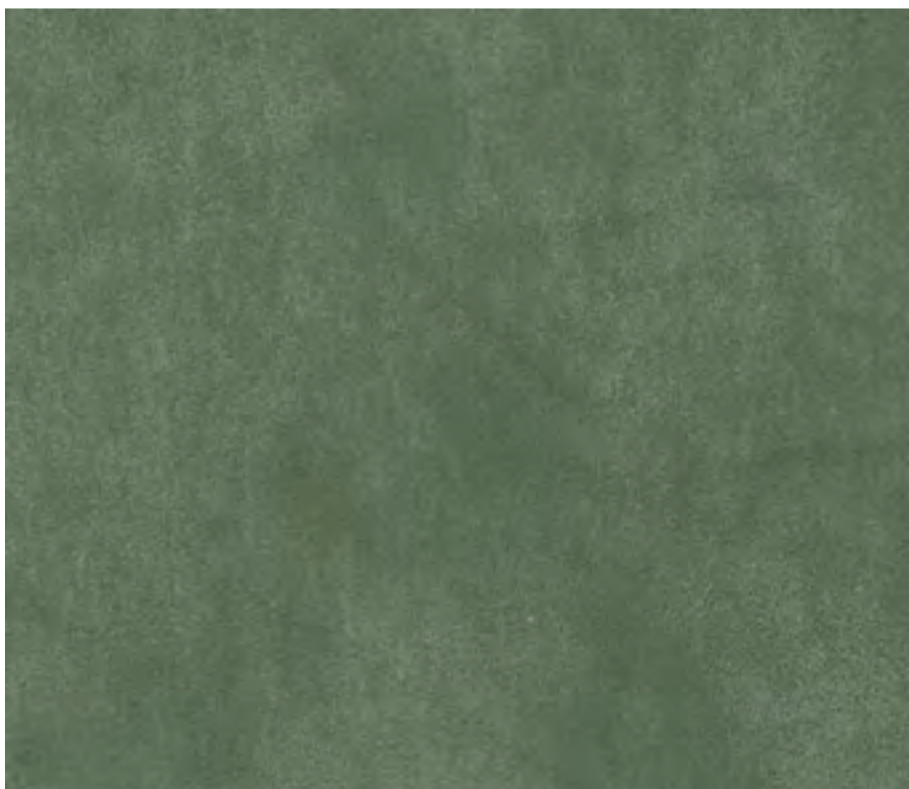
PELLE | LEATHER CAT. F - WILD



WILD F92145



WILD F92144



WILD F92143



WILD F92142



Pelli conciate al cromo, asciugate sottovuoto, rifinite con aniline e carteggiate manualmente ottenendo un effetto invecchiato.

Particolarità di questo articolo è il connubio tra l'effetto "vintage" e un tatto vellutato.

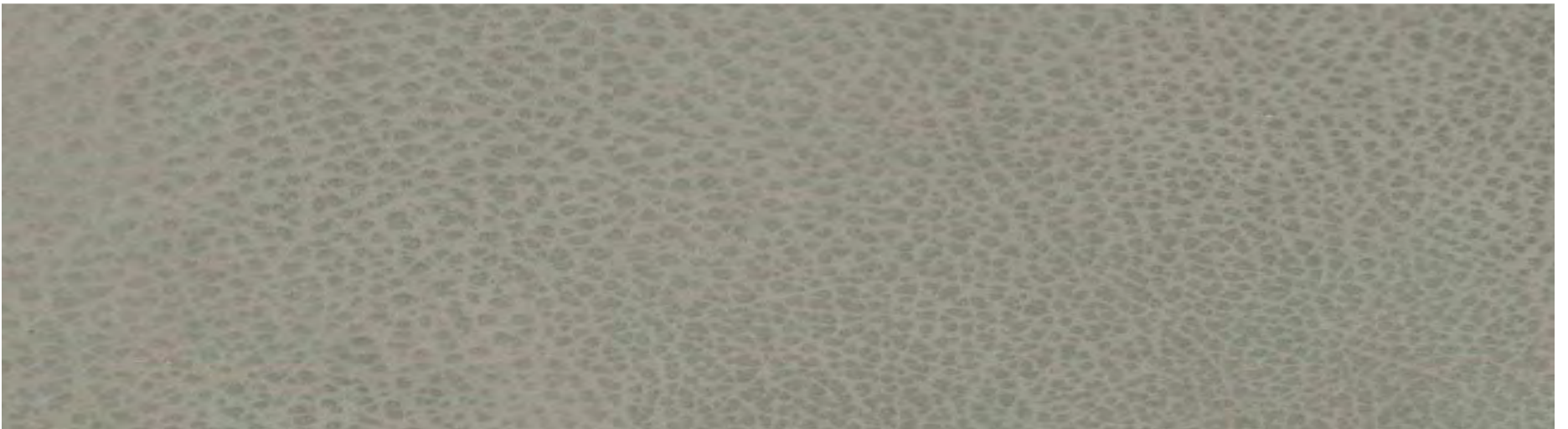
Chrome-tanned, dry vacuum leather finished with aniline and buffed manually obtaining a worn-look.

A special combination between an old-fashioned vintage look and the superbly soft feel.

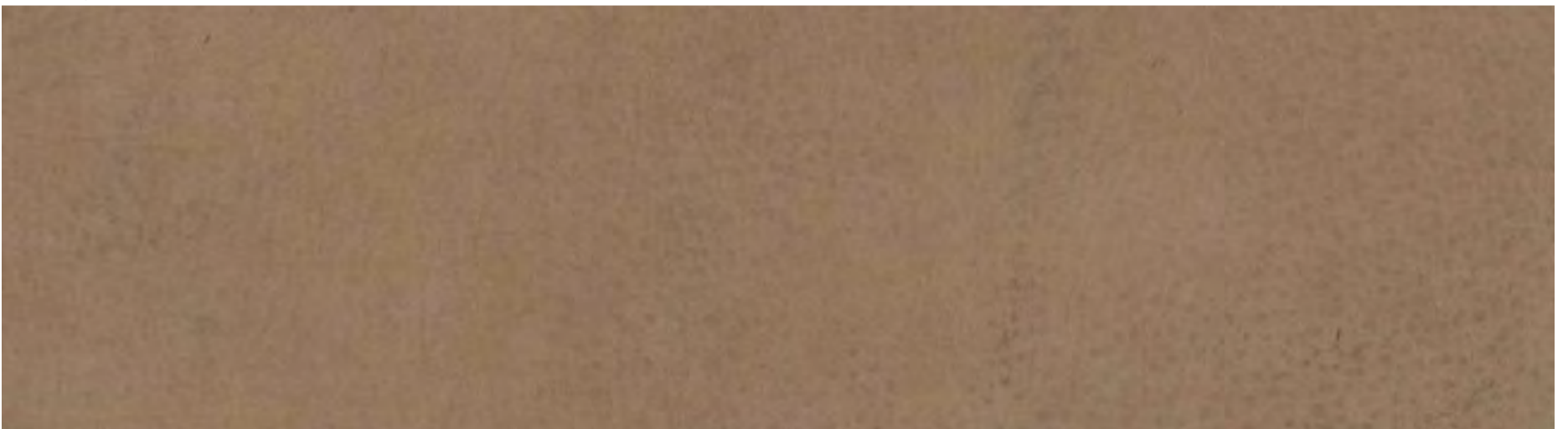
PELLE | LEATHER CAT. F - ANTIQUE



ANTIQUE F92136



ANTIQUE F92137



ANTIQUE F92138



Pelle naturale liscia effetto invecchiato

A soft, smooth, worn-looking leather for a lived-in look.

PELLE | LEATHER CAT. F - ANTIQUE



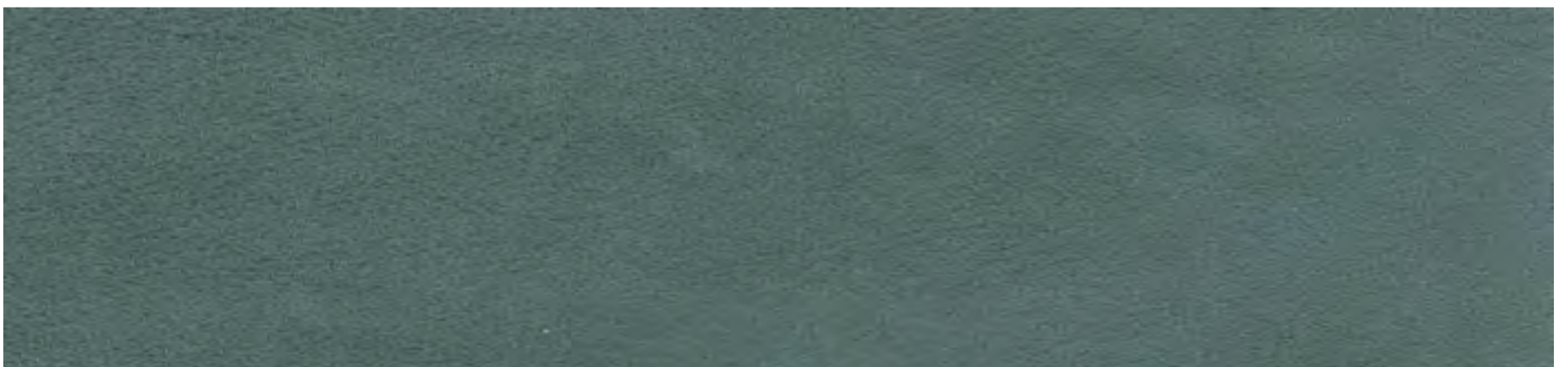
ANTIQUE F92140



ANTIQUE F92139



ANTIQUE F92141



ANTIQUE G713 BLUE



*Pelle naturale liscia effetto invecchiato
A soft, smooth, worn-looking leather for a lived-in look.*

PELLE | LEATHER CAT. G - TOUCH



TOUCH G701



TOUCH G700



TOUCH G703

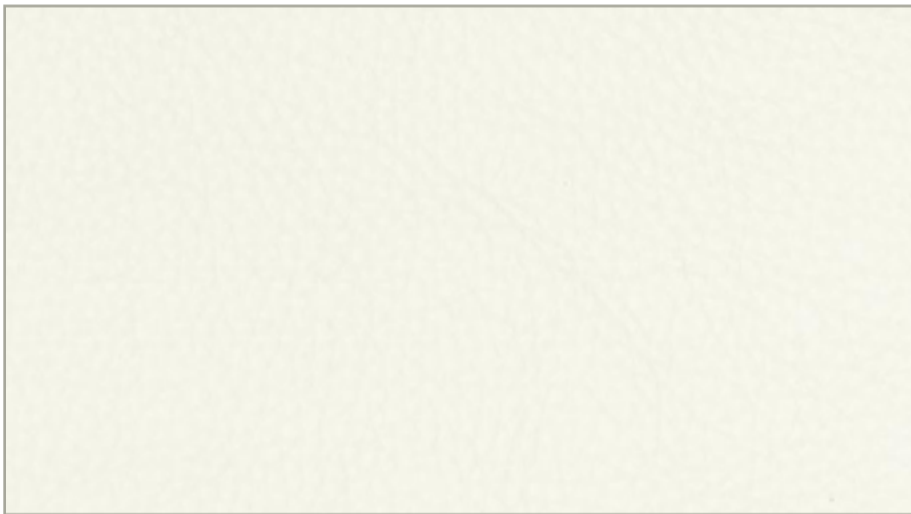


*Particolarità di questa pelle è il tatto morbidissimo.
Particularity of this leather is a very soft touch, very appealing.*

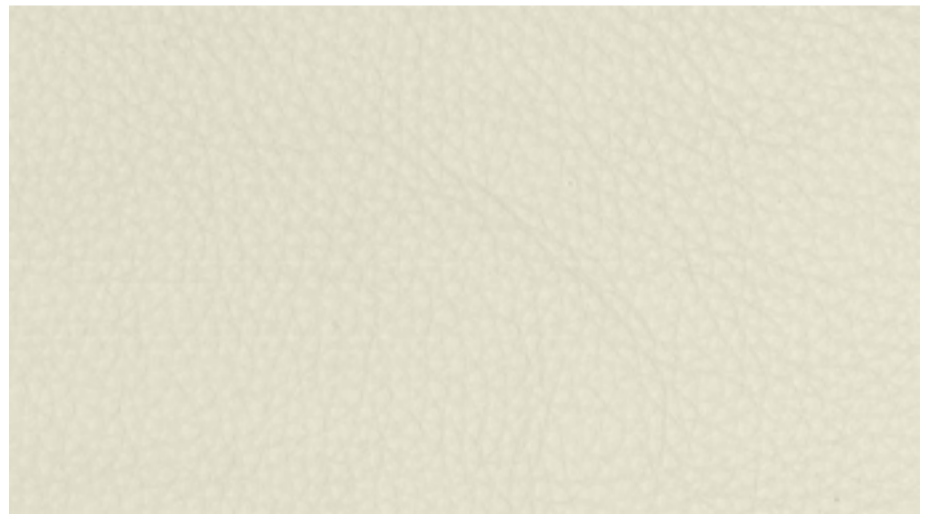
PELLE | LEATHER CAT. G - PIUMONE



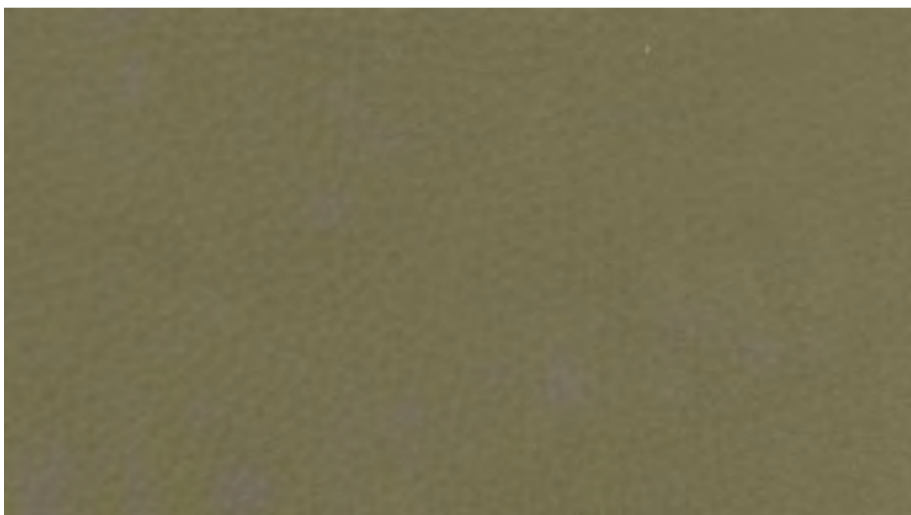
PIUMONE G707



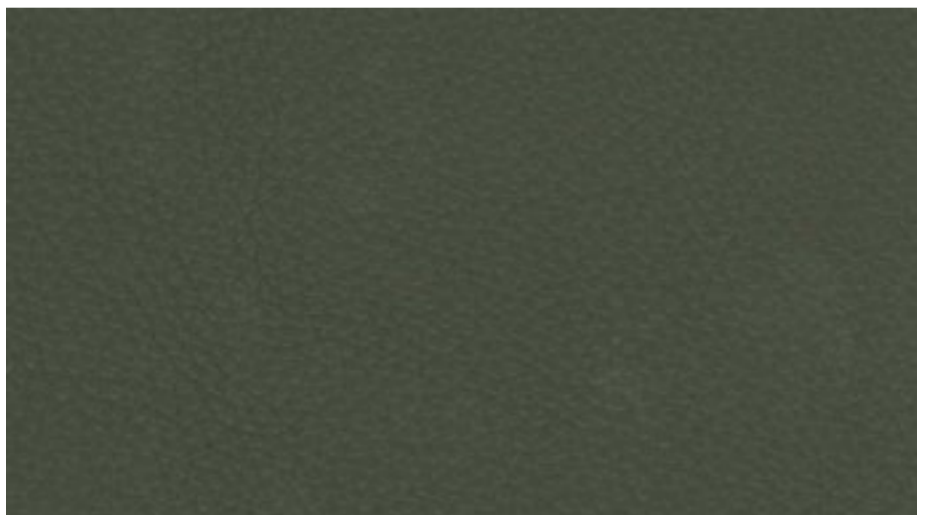
PIUMONE G705



PIUMONE G709



PIUMONE G708



PIUMONE G706



*Pelle dall'elevato spessore con un tatto e una mano eccellenti.
The softness of the leather but much thicker and stronger with an excellent touch and texture.*

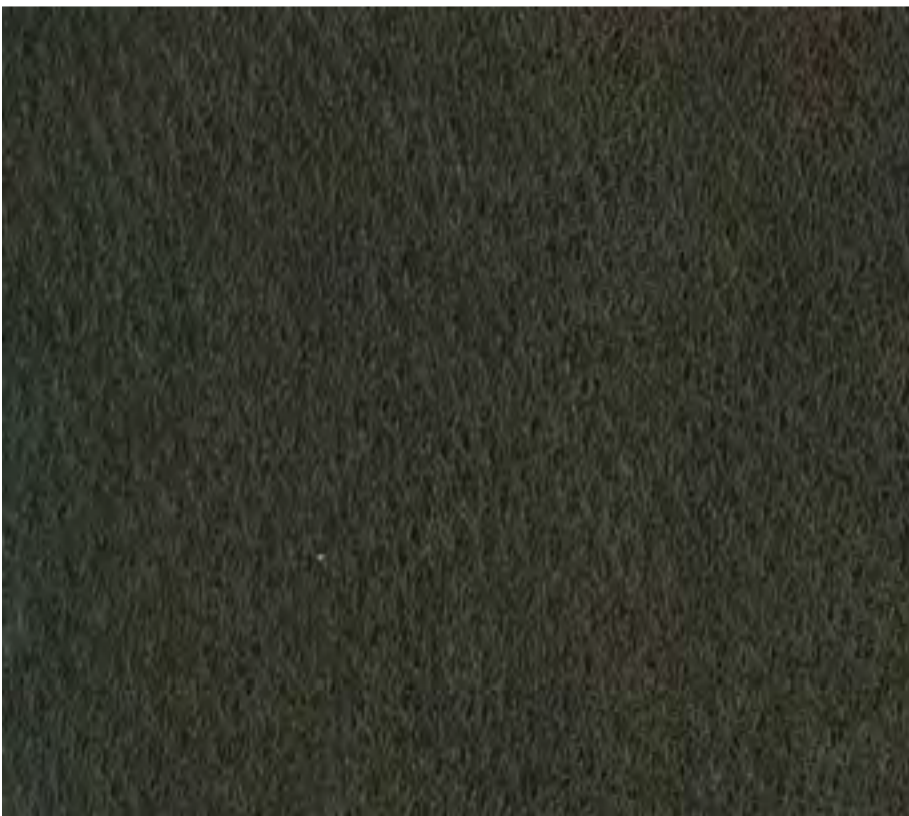
PELLE | LEATHER CAT. L - LUXE VINTAGE



VINTAGE LUXE 403



VINTAGE LUXE 404



VINTAGE LUXE 405



VINTAGE LUXE 406



*Pelle naturale carteggiata manualmente ad ottenere un effetto "vintage".
Natural leather manually abraded to obtain a "vintage" effect.*

PELLE | LEATHER CAT. L - LUXE SKIN



SKIN LUXE 400



SKIN LUXE 401



*Pelli conciate al cromo, pieno fiore, rifinite con cere.
Particolarità dell'articolo sono l'aspetto leggermente nabuccato, naturale con un
tatto di altissimo pregio.*

*Chrome-tanned, full grain leather finished with waxes.
Particularity of this leather is a soft nubuk finish, with a natural appearance
and a touch of highest quality.*

PELLE | LEATHER CAT. F - NABUK



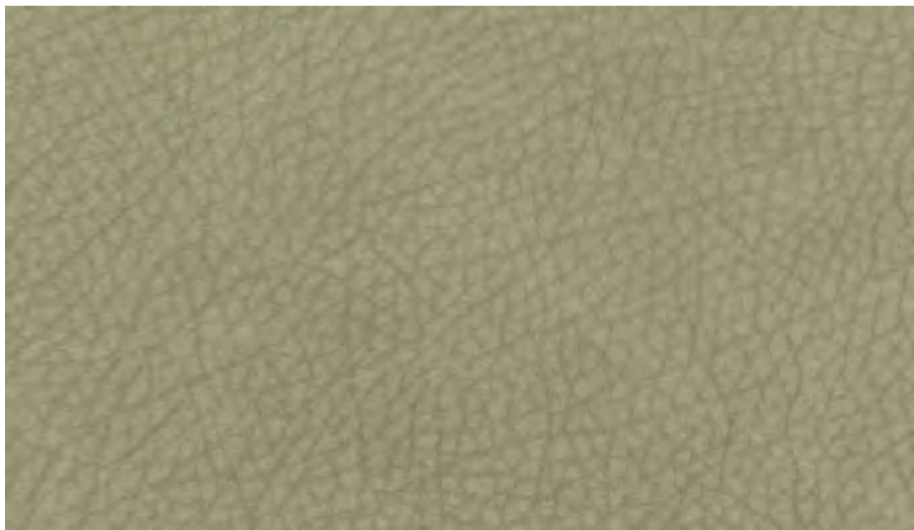
NABUK F92108



NABUK F92509



NABUK F92112

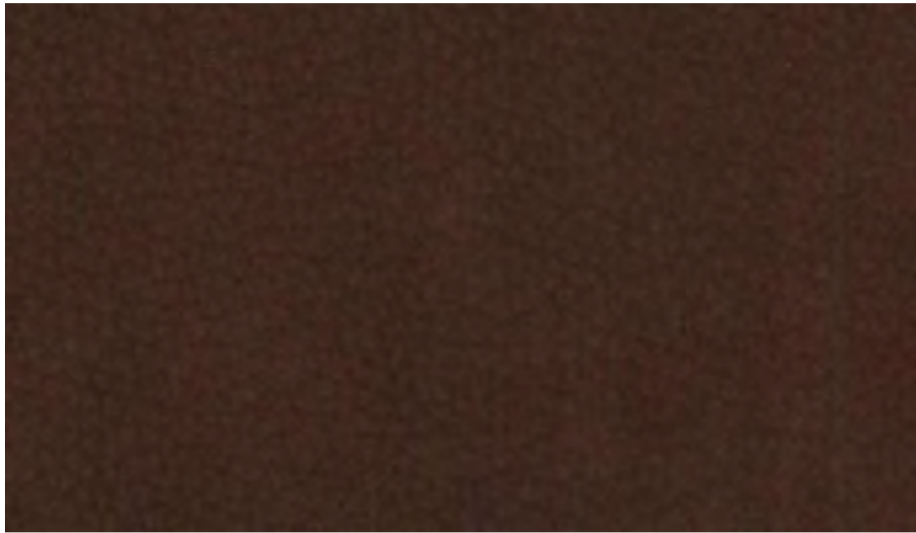


NABUK F92211



NABUK F92113

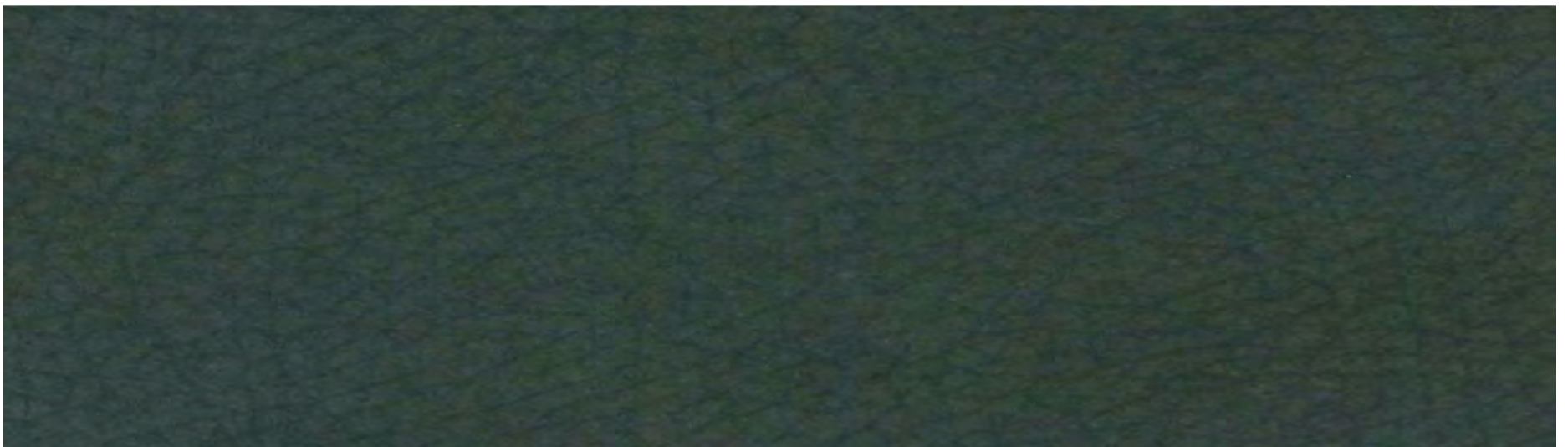
PELLE | LEATHER CAT. F - NABUK



NABUK F92109



NABUK F92512



NABUK F92513

PELLE | LEATHER CAT. G - NABUK



NABUK G710



NABUK G711

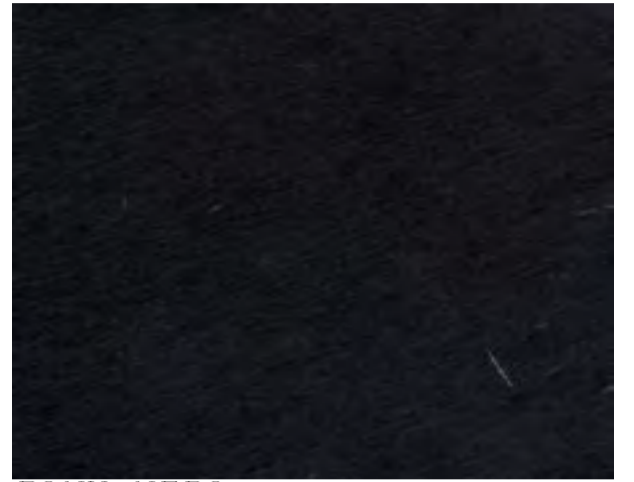
CAVALLINO | COW HIDE



PONY BIANCO / MARRONE

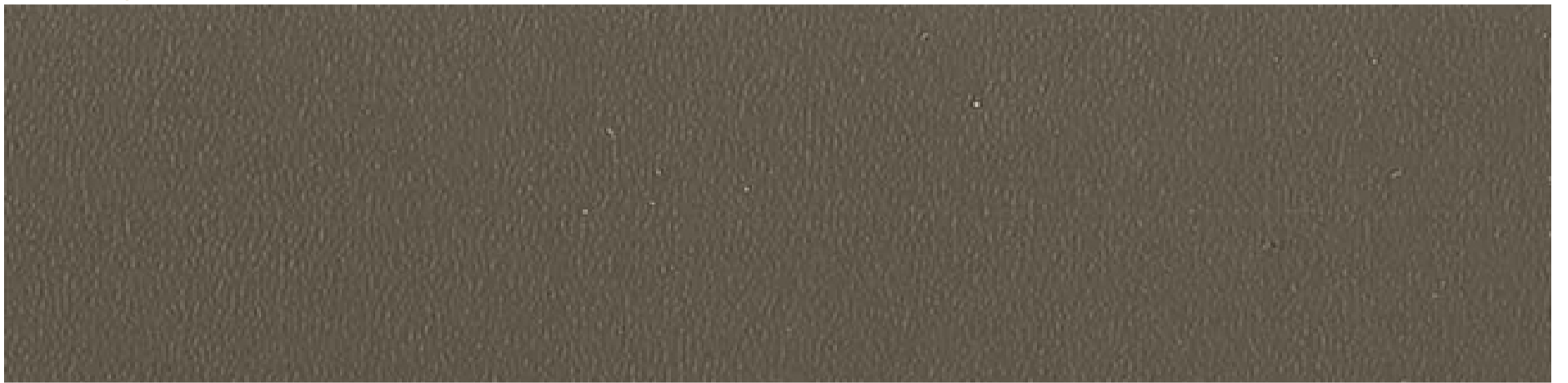


PONY BIANCO / NERO

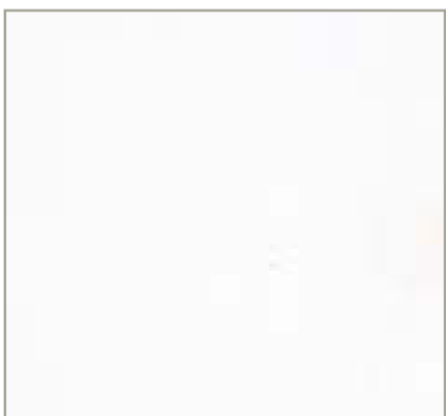


PONY NERO

CUOIO | HIDE



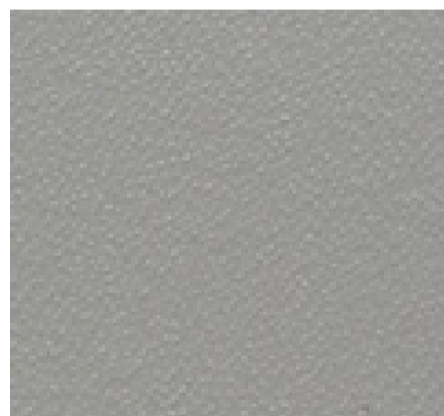
C28



C10



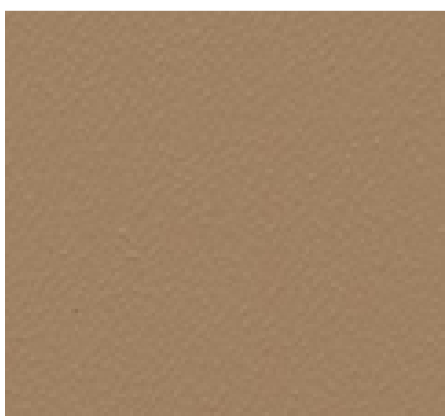
C23



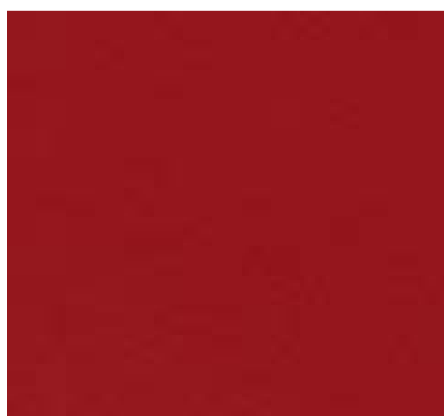
C01



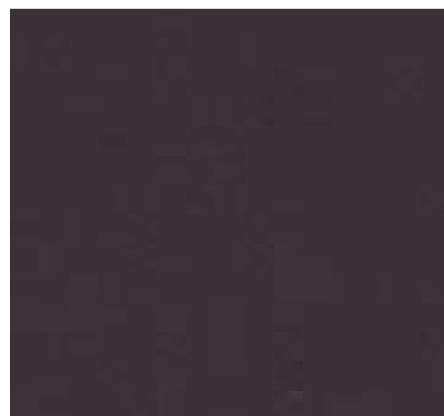
C17



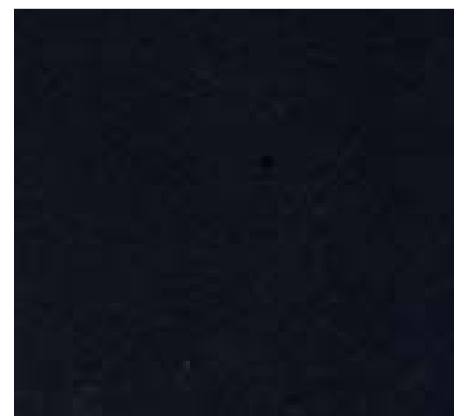
C16



C115



C11



C09

CUOIO | HIDE for MVSEVM collection



BIANCO / WHITE



GRIGIO / GREY



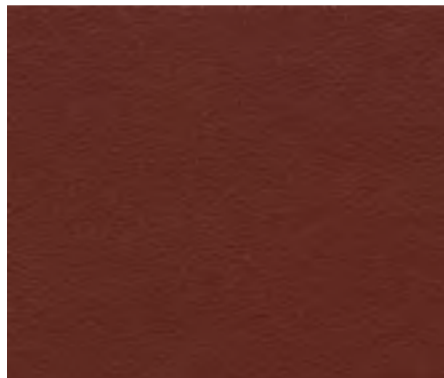
NATURALE / DARKTANHIDE



NERO / BLACK



PANNA / LIGHTTANHIDE



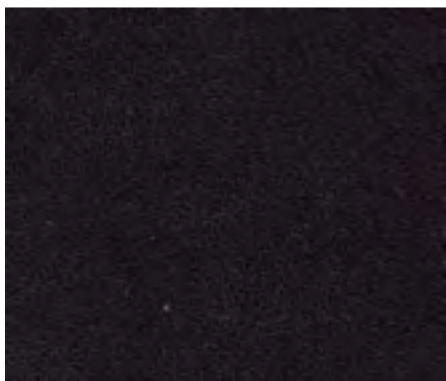
ROSSO BULGARO



ROSSO / RED



SABBIA / SAND



TESTA DI MORO

COME SI PULISCE UN RIVESTIMENTO IN PELLE?

Pelle

Per mantenere intatto nel tempo il rivestimento in pelle possono essere effettuate regolarmente delle operazioni di pulizia e manutenzione. Pulire regolarmente la poltrona con acqua e sapone neutro e stendere in maniera uniforme su tutta la superficie in pelle della crema nutriente, in quanto la crema satura la pelle ritardando l'assorbimento delle macchie. Non usare stracci in microfibra perché rimuovono il grasso e possono danneggiare la pelle. Consigliamo di usare la crema nutriente una o due volte all'anno (ogni volta che la pelle risulta secca). Per rimuovere eventuali macchie usare un fazzoletto di carta o un panno di cotone. Non strofinare. Premere un panno contro la macchia per assorbire il grasso ed usare un detergente delicato sciolto nell'acqua per rimuovere eventuali aloni.

Pelle cerata

Per rimuovere eventuali macchie dalla pelle cerata usare un panno pulito imbevuto di una soluzione di acqua al 90% e sapone neutro non colorato al 10%. Strofinare delicatamente e asciugare con un altro panno morbido asciutto e pulito.

Pelle nabuk

Spolverare periodicamente con un panno bianco pulito, asciutto e non abrasivo. In caso di macchie da sostanze solubili in acqua (bibite, caffè, tè, latte, marmellata): rimuovere rapidamente il liquido dalla superficie tamponando con un panno bianco (o carta assorbente) non abrasivo. Successivamente con un panno pulito imbevuto d'acqua, strofinare delicatamente dall'esterno verso l'interno della macchia. Asciugare immediatamente con un panno pulito. Non inzuppare la superficie della pelle ed asciugare immediatamente con un panno asciutto.

Cavallino

Per mantenere il pelo pulito, spazzolarlo di tanto in tanto con una spazzola morbida nel senso del pelo. Per rimuovere eventuali macchie usare un panno di cotone imbevuto in acqua e sapone neutro e strofinare delicatamente sempre nel senso del pelo, tamponare poi con panno assorbente.

HOW DO I CLEAN LEATHER UPHOLSTERY?

Leather

In order to maintain the inherent features of leather upholstery regular cleaning and care treatments are necessary. Regularly wash the armchair with water and neutral soap and then apply a coating of nourishing cream on the entire surface of the same, as the cream acts to saturate the leather and delays any stain absorption. Do not use micro-fibre cloths as they may remove the grease and damage the leather itself. We recommend that this nourishing cream be used once or twice a year (or whenever the leather appears to be dry). To remove any stains use a paper tissue or cotton cloth. Do not rub. Press the cloth against the stain to absorb the grease and use a delicate detergent dissolved in water to remove any rings.

Waxed Leather

To remove any stains from waxed leather use a clean cloth soaked with a solution of 90% water and 10% transparent neutral soap. Rub gently and dry with a soft. Dry cloth.

Nabuk leather

Dust down occasionally using a clean white cloth, that must be dry and non-abrasive. In the event of stains caused by water soluble substances (beverages, coffee, tea. Milk, jam); rapidly remove the liquid from the surface mopping up with a white cloth soaked in water, rub gently from outside to the inside using a clean cloth. Do not soak the leather surface and immediately dry with a dry cloth.

Pony hide

To keep the hide clean, brush occasionally using a soft brush in the direction of the hide hair, To remove any stains use a cotton cloth soaked in water with a neutral soap and rub gently always in the sense of the hide hair, and then mop with an absorbent cloth.