

## PELLI LEATHERS

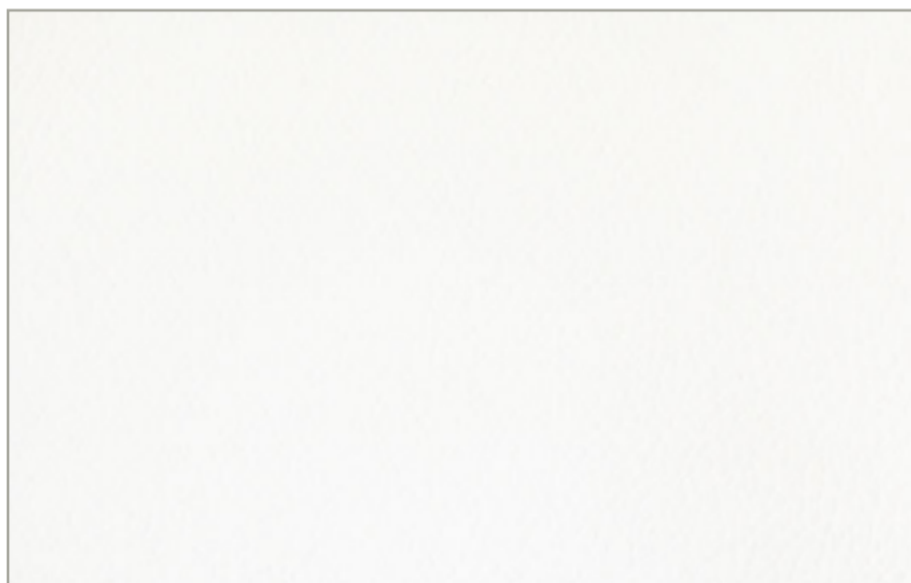


## ESSENTIAL CAT. E



Pelli tinte con aniline e rifinite in un' ampia gamma di colori per soddisfare tutte le richieste di abbinamento.  
Aniline-dyed leathers in a wide range of colours that can satisfy any matching requests.

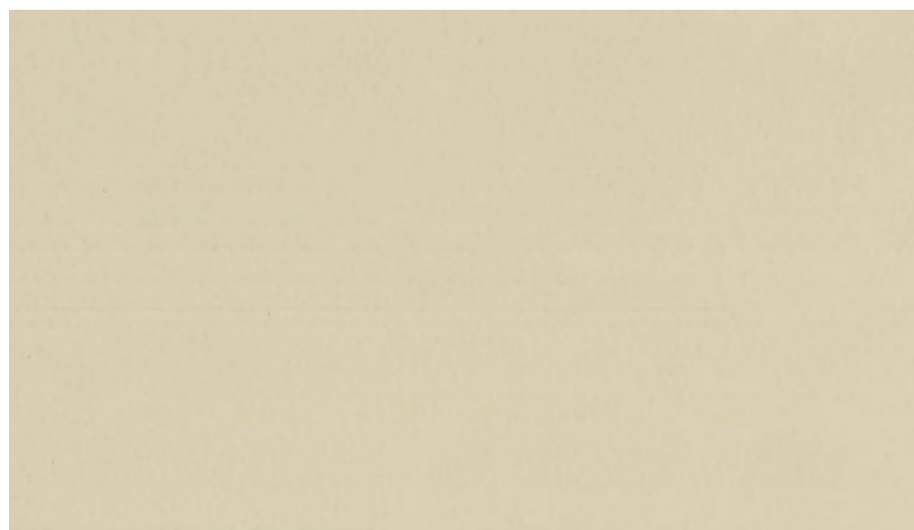
SPESSORE\_THICKNESS : 1,2 - 1,3 mm  
GRANA\_GRAIN : grana naturale | natural grain  
COLORE\_COLOUR: uniforme | uniform  
ASPETTO\_SURFACE : semi-lucido | semi-glossy  
TATTO\_TOUCH : liscio | smooth



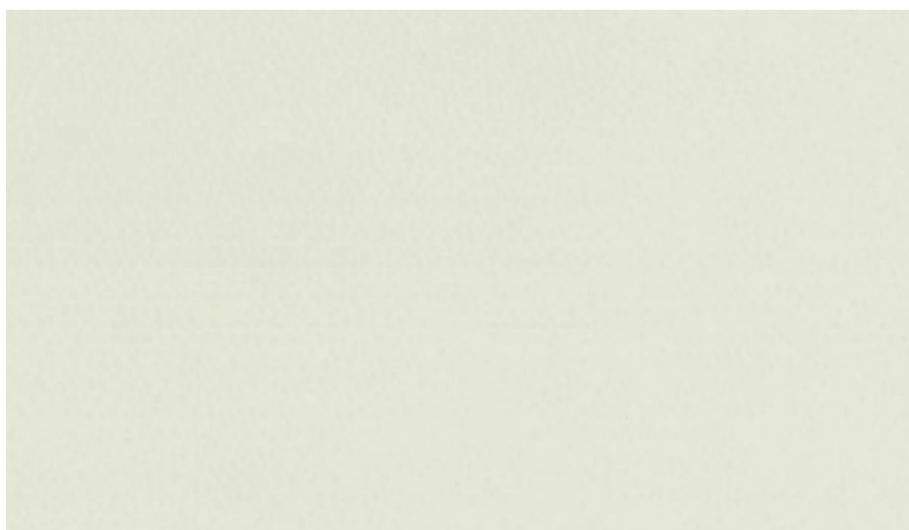
E1535\_bianco | white



E15\_avorio | ivory

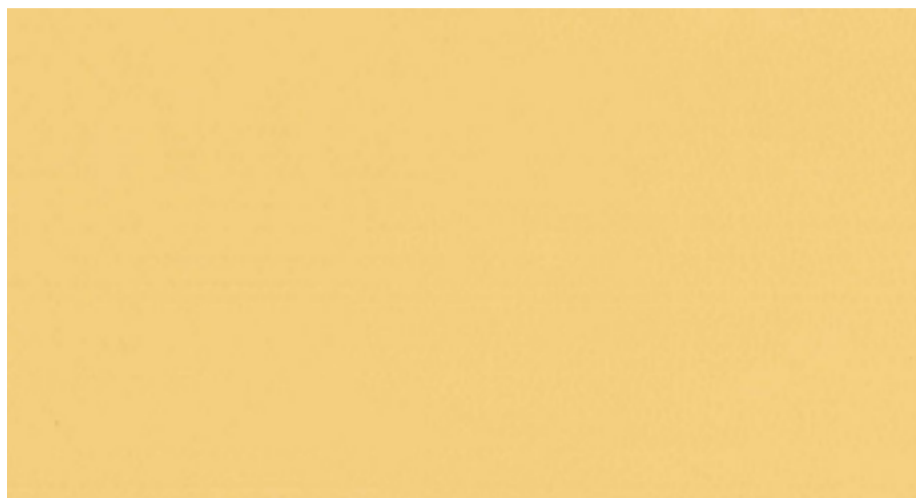


E06\_beige

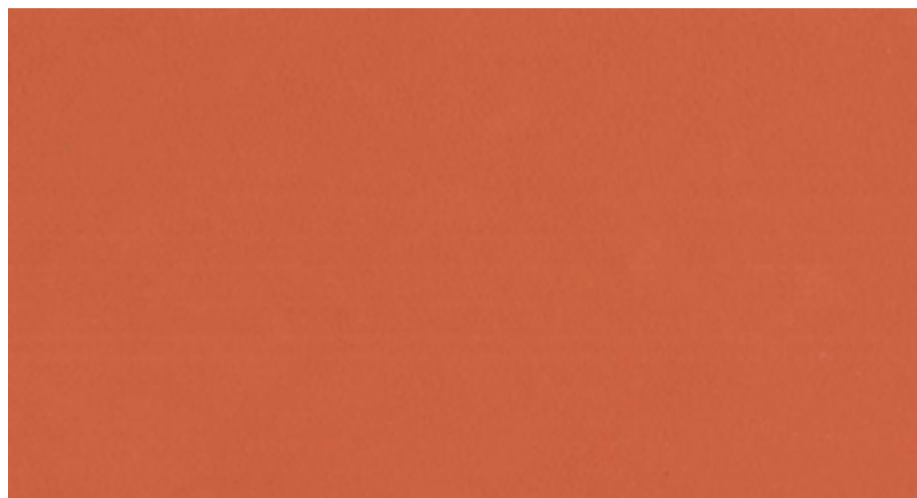


E01\_ghiaccio | ice

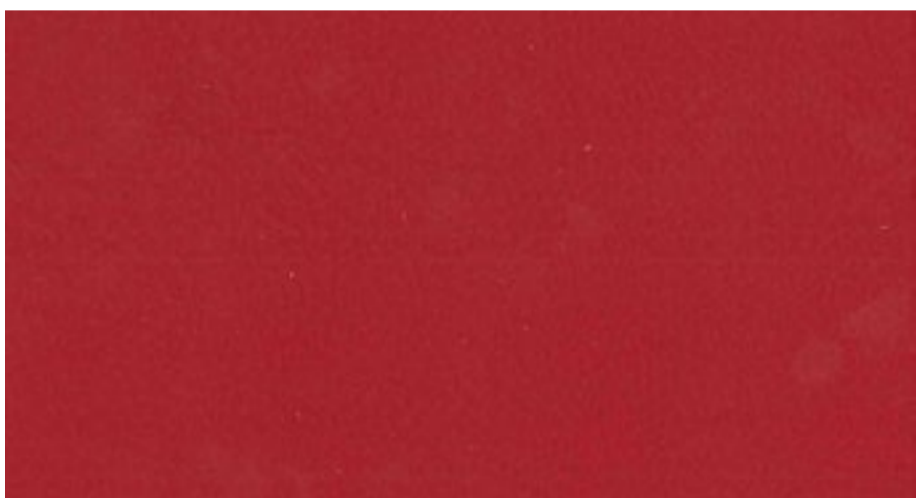
## ESSENTIAL CAT. E



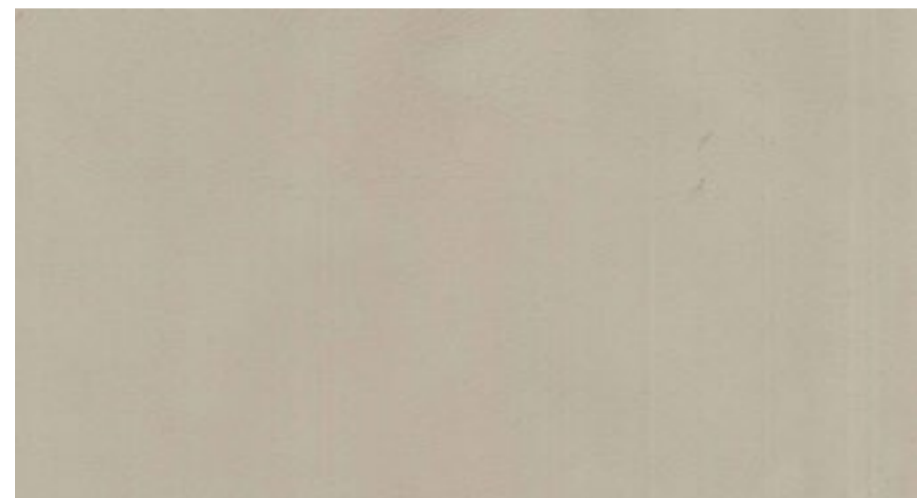
E PANNA\_crema | cream



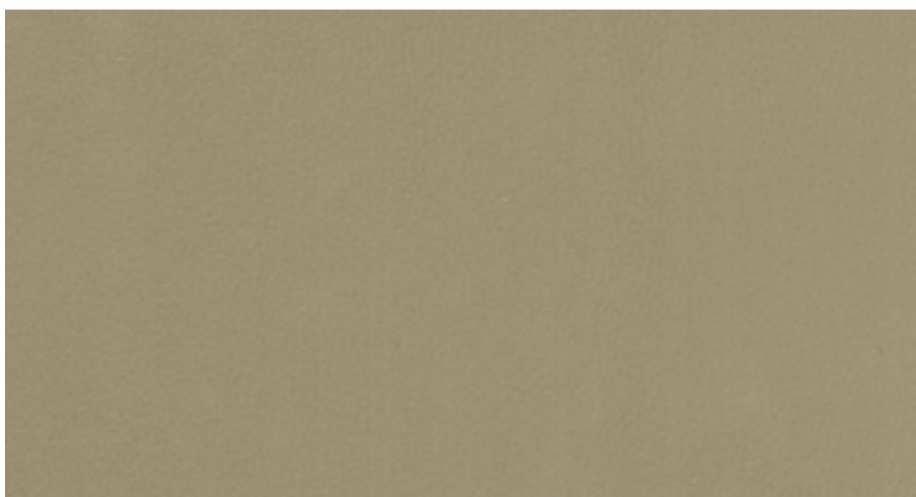
E09\_arancione | orange



E17\_rosso | red



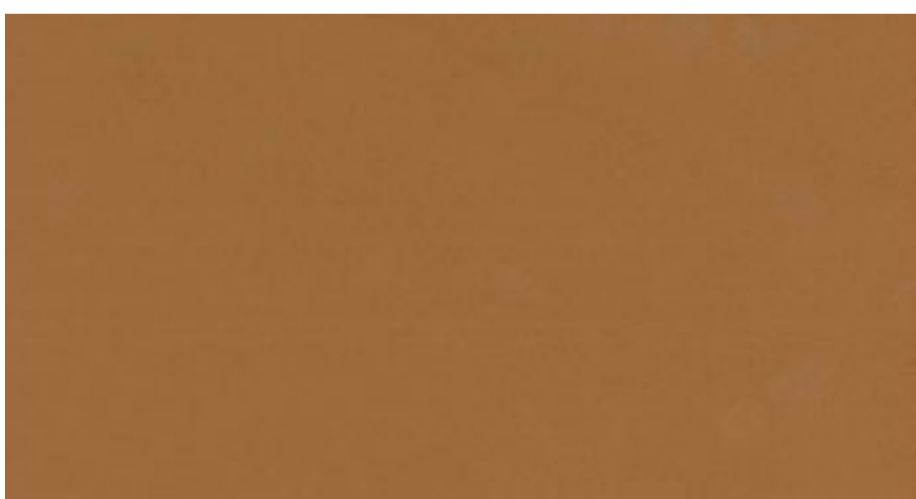
E16\_sabbia | sand



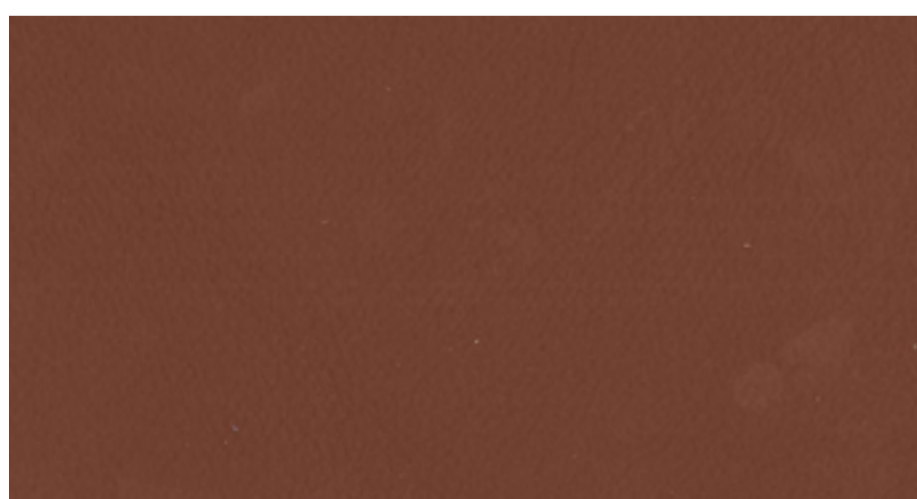
E02\_cappuccino



E05\_fango | mud

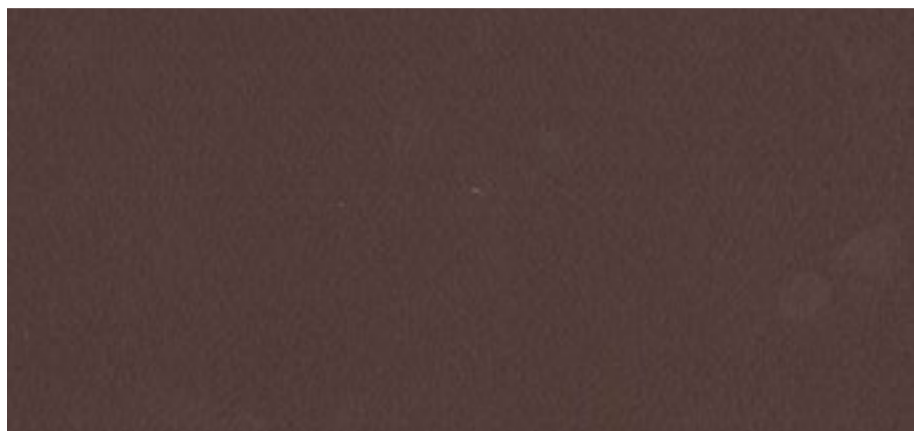


E12\_cognac



E04\_mattone | brick

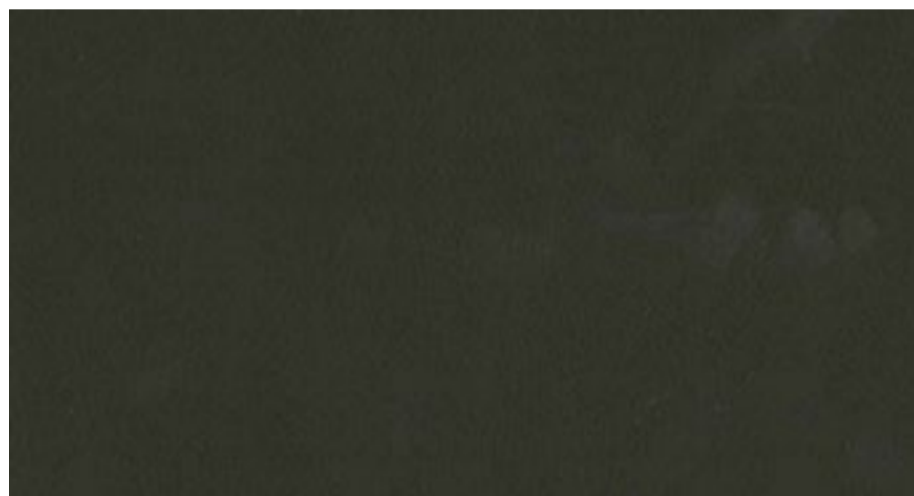
## ESSENTIAL CAT. E



E13\_bordeaux



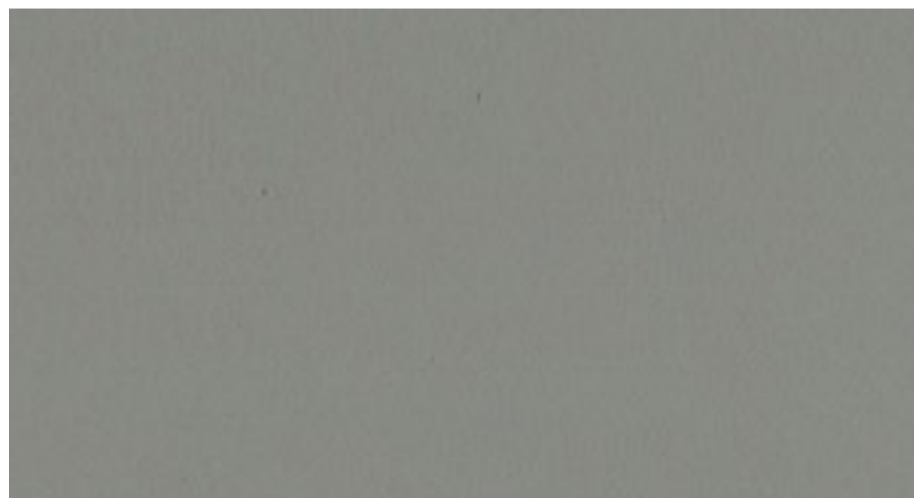
E499\_cioccolato | chocolate



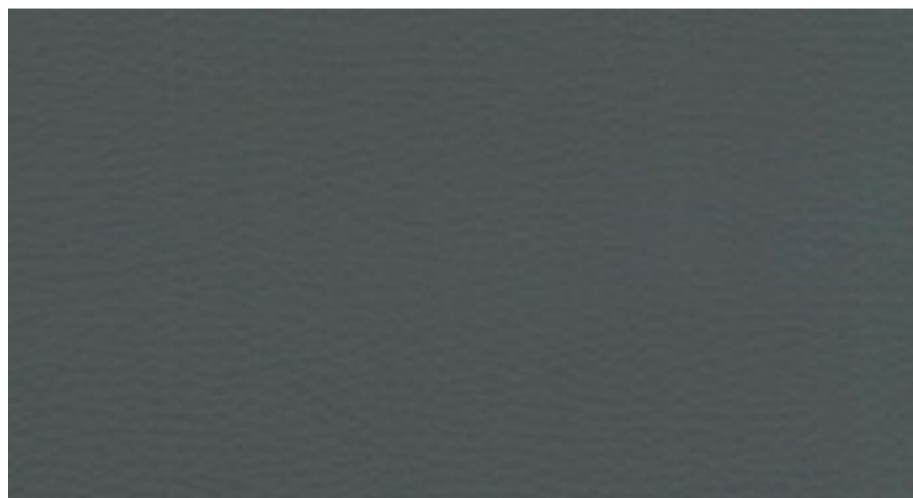
E1010\_testa di moro | dark brown



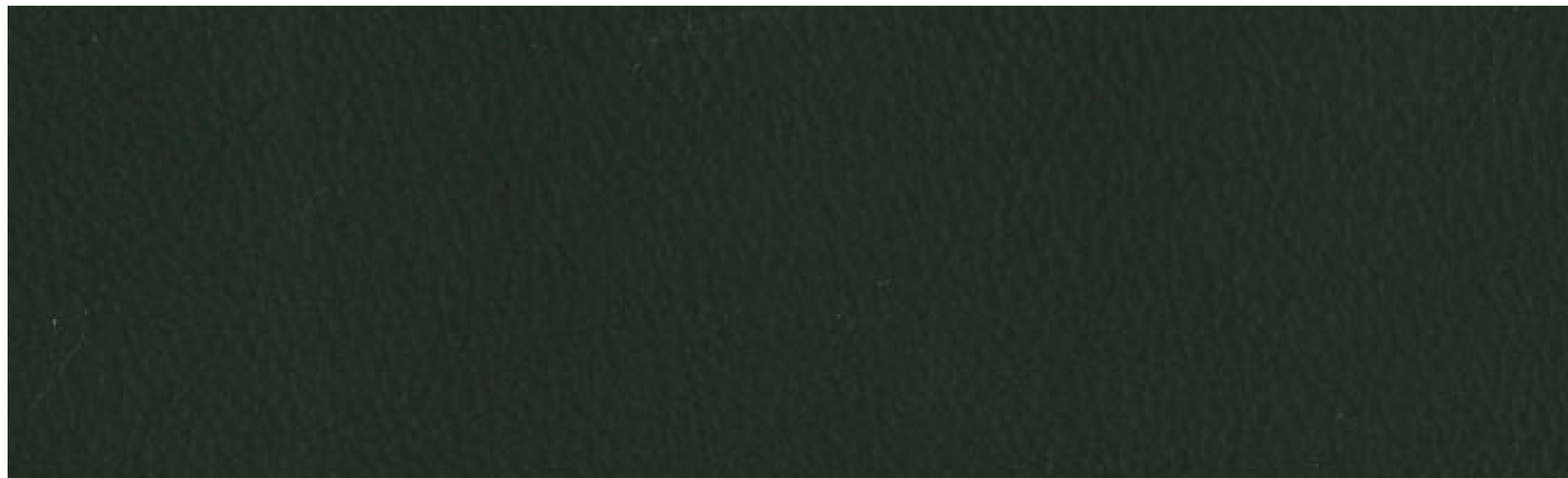
E210\_blu | blue



E03\_grigio chiaro | light grey



E28\_grigio | grey



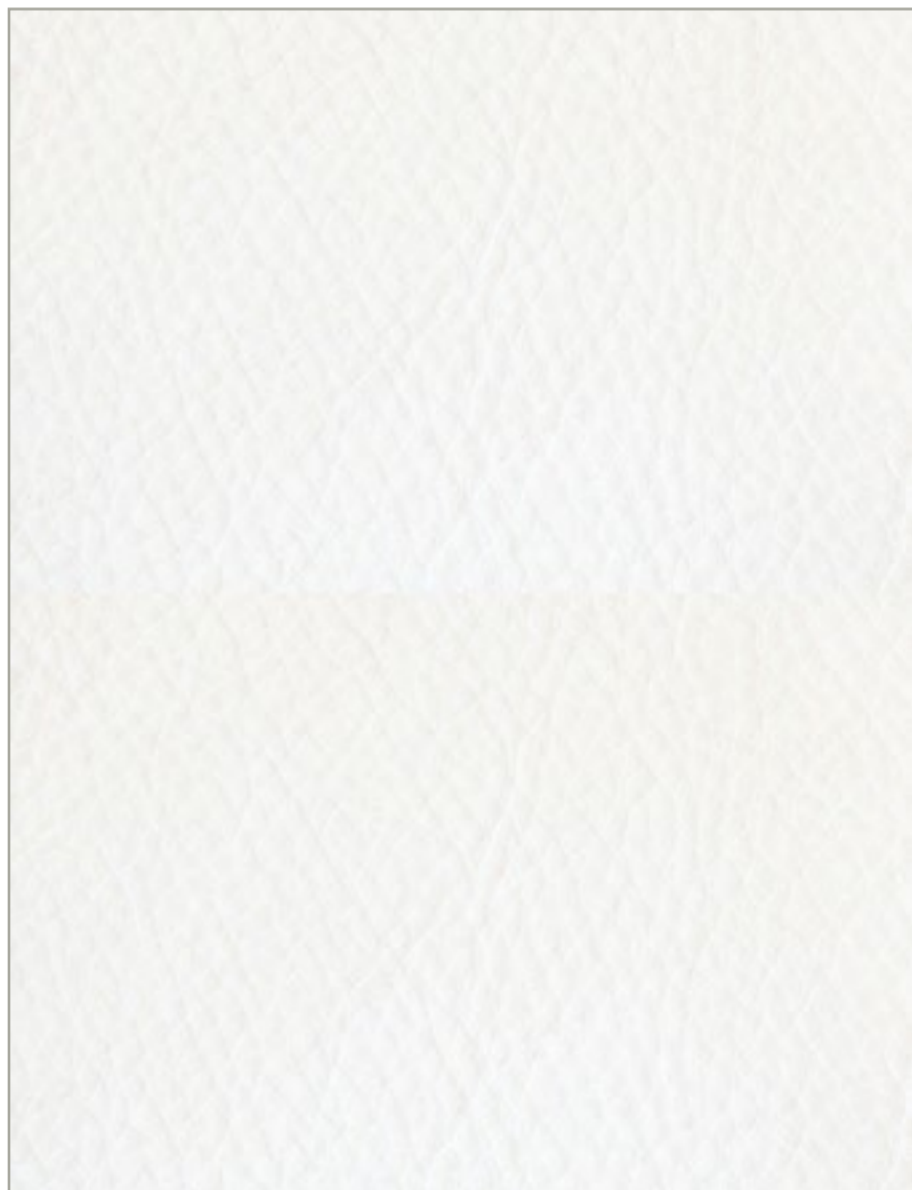
E1500\_nero | black

## DOLLARO CAT. E

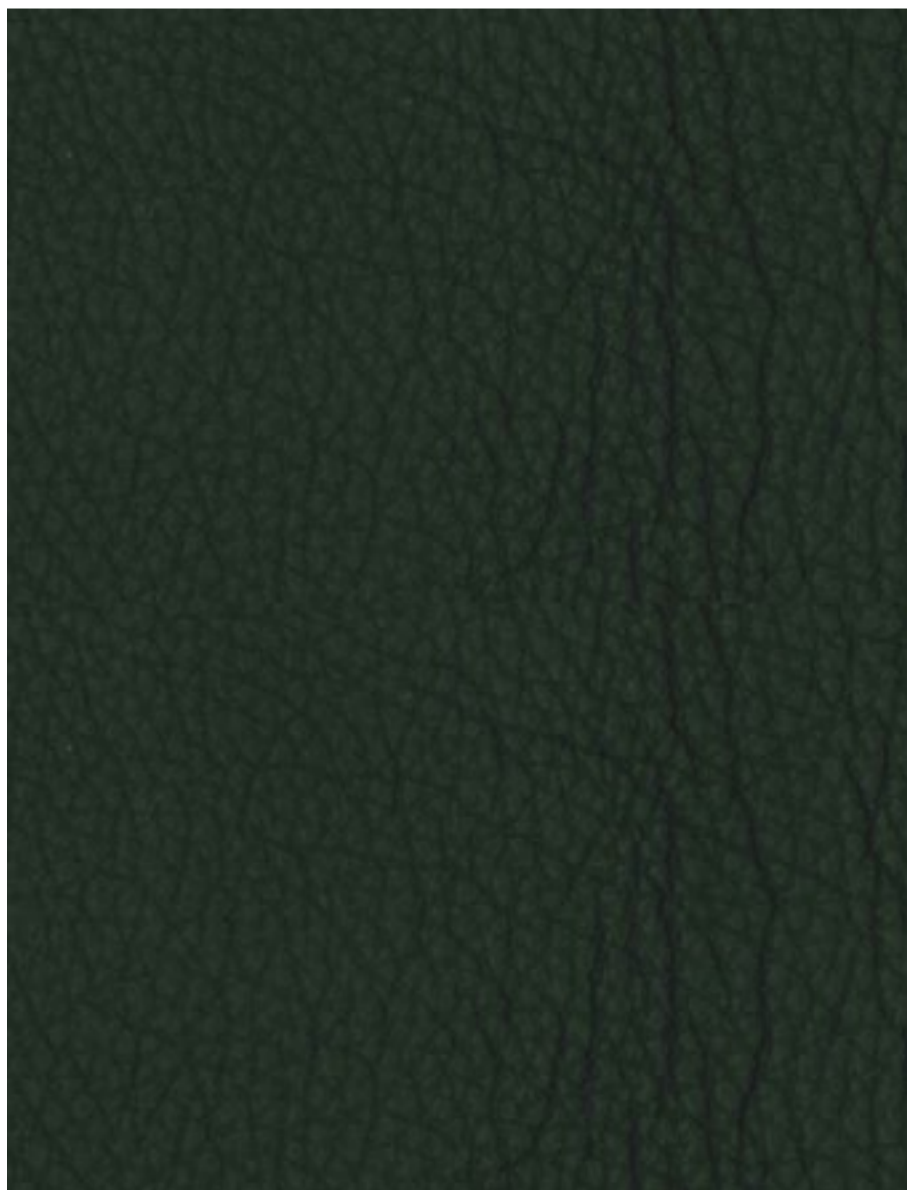
SPESSORE\_THICKNESS : 1,2 - 1,4 mm  
GRANA\_GRAIN : grana grossa naturale | significant natural grain  
COLORE\_COLOUR: uniforme | uniform  
ASPETTO\_SURFACE : semi-lucido | semi glossy  
TATTO\_TOUCH : liscio | smooth



Pelli tinte con aniline e rifinite in un' ampia gamma di colori per soddisfare tutte le richieste di abbinamento.  
Aniline-dyed leather in a wide range of colours that can satisfy any matching requests.



E19 DOLLARO\_bianco | white



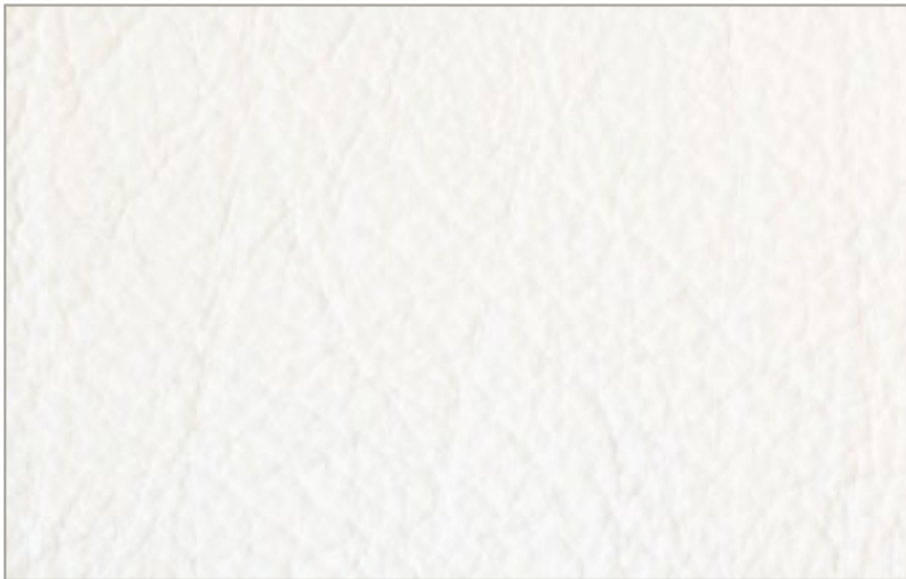
E DOLLARO\_nero | black

## BUFALO CAT. E

SPESSORE\_THICKNESS : 1,4 - 1,6 mm  
GRANA\_GRAIN : grana grossa naturale | significant natural grain  
COLORE\_COLOUR : uniforme | uniform  
ASPETTO\_SURFACE : semi-lucido | semi glossy  
TATTO\_TOUCH : liscio | smooth



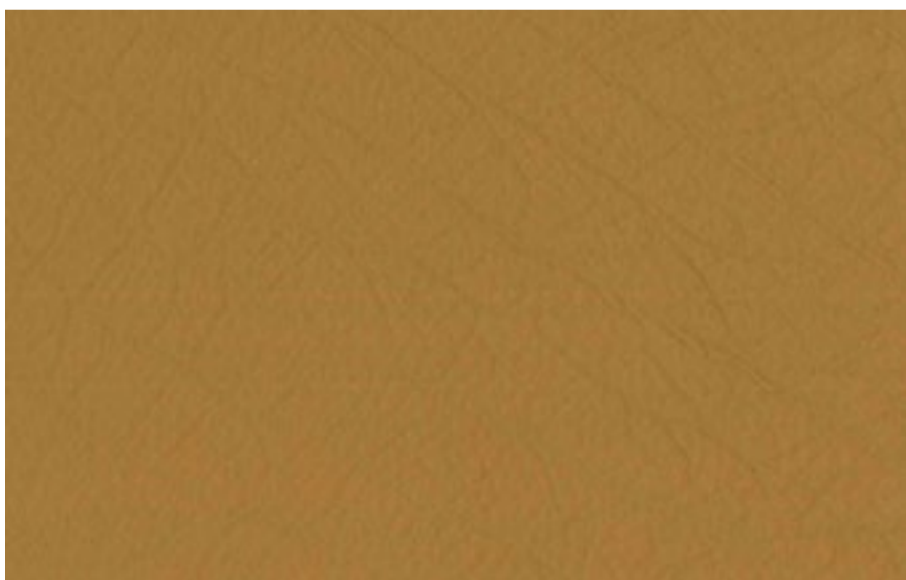
Pelli tinte con aniline e rifinite in un' ampia gamma di colori per soddisfare tutte le richieste di abbinamento.  
Aniline-dyed leather in a wide range of colours that can satisfy any matching requests.



E506 BUFALO\_bianco | white



E501 BUFALO\_paglia | straw



E504 BUFALO\_marrone chiaro | light brown



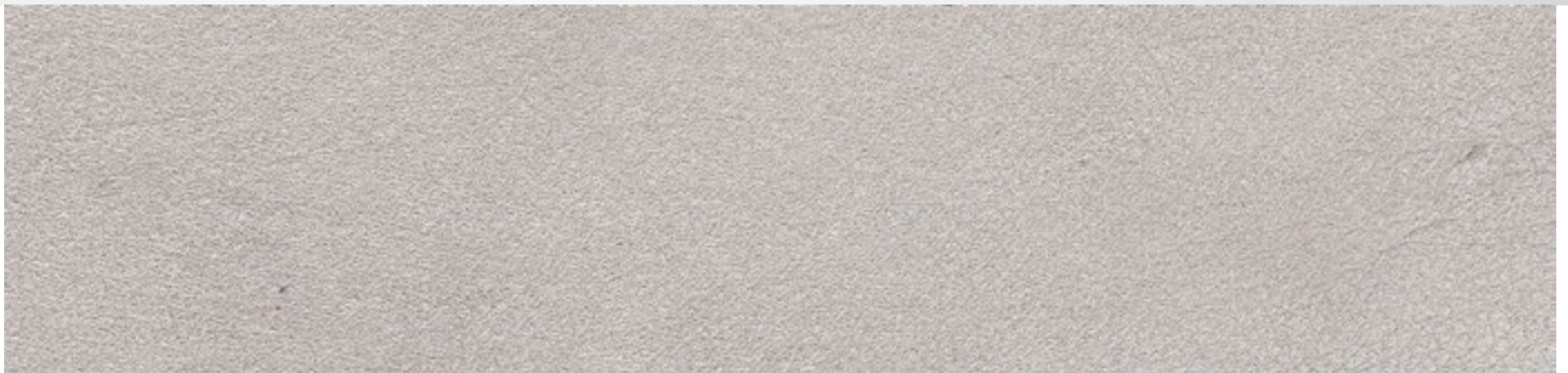
E505 BUFALO\_nero | black

## ANTIQUE CAT. F

SPESSORE\_THICKNESS : 1,2 - 1,3 mm  
 GRANA\_GRAIN : grana naturale | natural grain  
 COLORE\_COLOUR: non uniforme | not uniform  
 ASPETTO\_SURFACE : opaco | matt  
 TATTO\_TOUCH : vellutato | velvety



Pelli conciate al cromo, asciugate sottovuoto, rifinite con aniline e carteggiate manualmente ottenendo un effetto invecchiato. Particolarità di questo articolo è il connubio tra l'effetto "vintage" e un tatto vellutato.  
 Chrome-tanned leathers, dry vacuum leather finished with aniline and manually buffed obtaining a worn-look.  
 A special combination between an old-fashioned vintage look and the superbly soft touch.



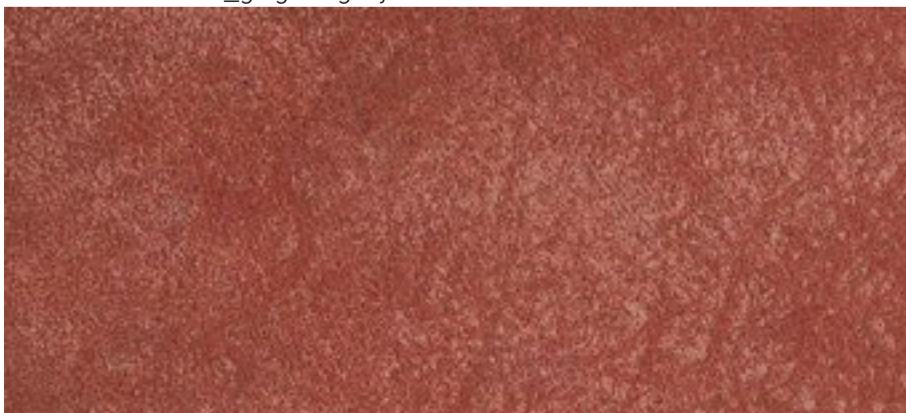
ANTIQUE\_F92148 sabbia | sand



ANTIQUE F92147\_grigio | grey



ANTIQUE\_F92152 cipria | powder



ANTIQUE F92153\_rosso | red



ANTIQUE\_F92151\_testa di moro | dark brown

## ANTIQUE CAT. F / G



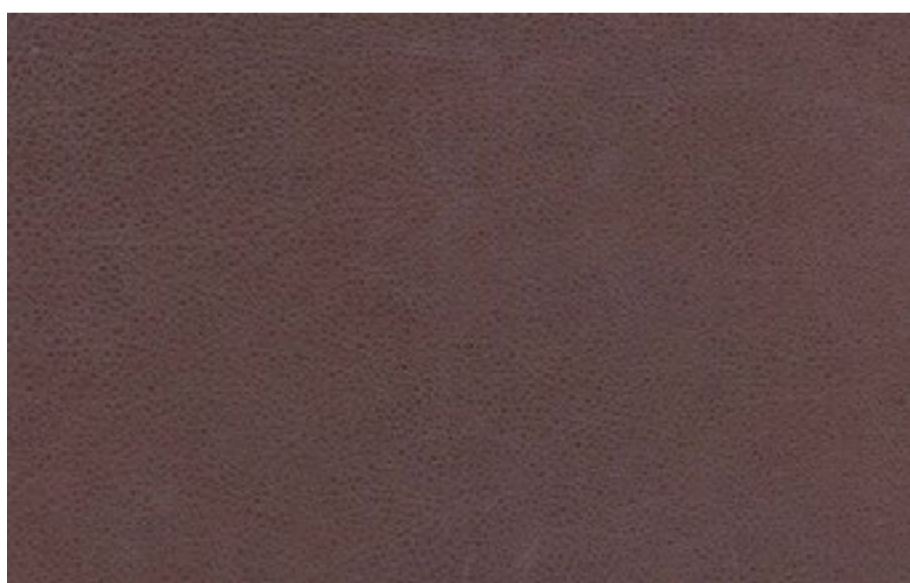
SPESSORE\_THICKNESS : 1,0 - 1,2 mm  
GRANA\_GRAIN : grana fine naturale | fine natural grain  
COLORE\_COLOUR: non uniforme | not uniform  
ASPETTO\_SURFACE : opaco | matt  
TATTO\_TOUCH : liscio | smooth



Pelli conciate al cromo, pieno fiore, rifinite con cere.  
Particolarità dell'articolo sono l'aspetto leggermente nabucato, naturale con un tatto di altissimo pregio.  
Chrome-tanned leathers, full grain, finished with waxes.  
Peculiarity of this article is to be slightly suede, have a natural appearance with a touch of highest quality.



ANTIQUE G713 blu / blue



ANTIQUE F92139\_prugna | plum

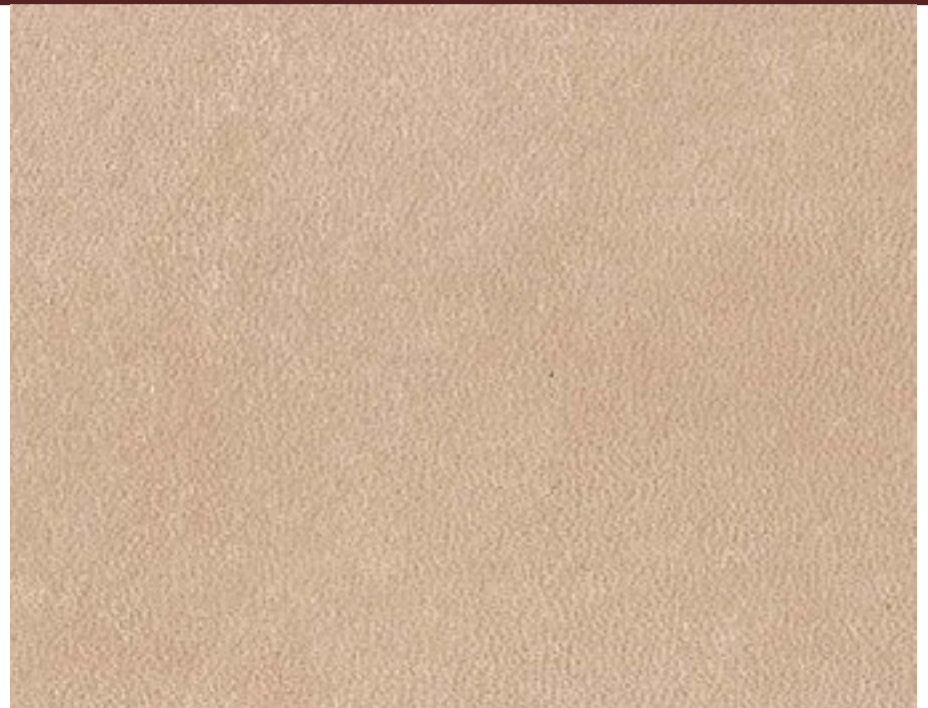
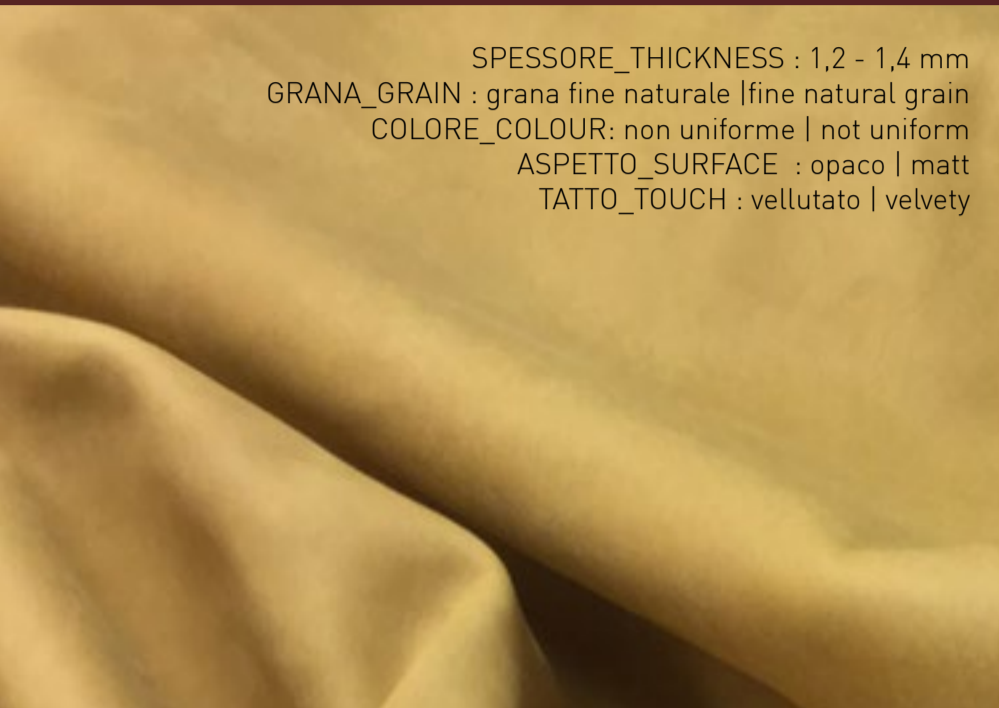


ANTIQUE\_F92140 lilla | lilac

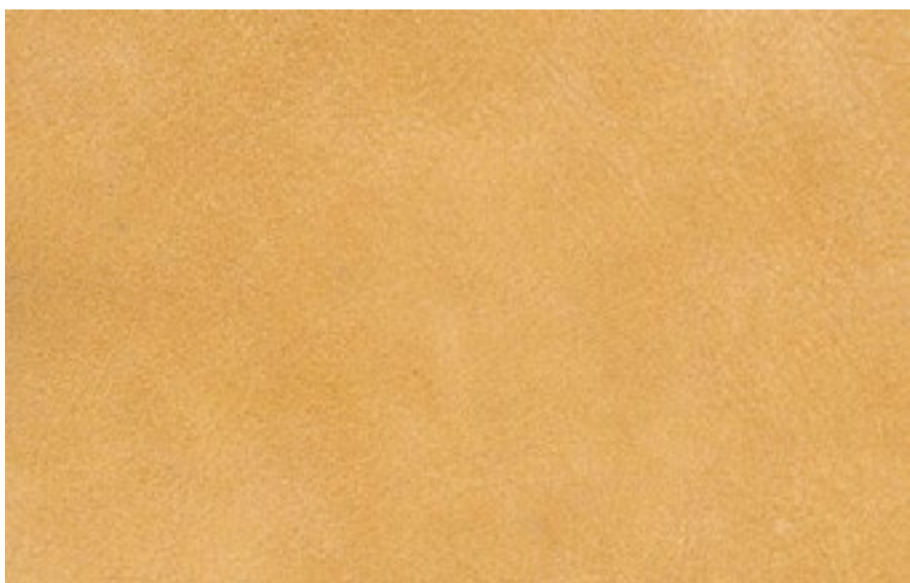


## ANTIQUE WILD CAT. G

SPESSORE\_THICKNESS : 1,2 - 1,4 mm  
 GRANA\_GRAIN : grana fine naturale | fine natural grain  
 COLORE\_COLOUR: non uniforme | not uniform  
 ASPETTO\_SURFACE : opaco | matt  
 TATTO\_TOUCH : vellutato | velvety



WILD G92146\_sabbia | sand



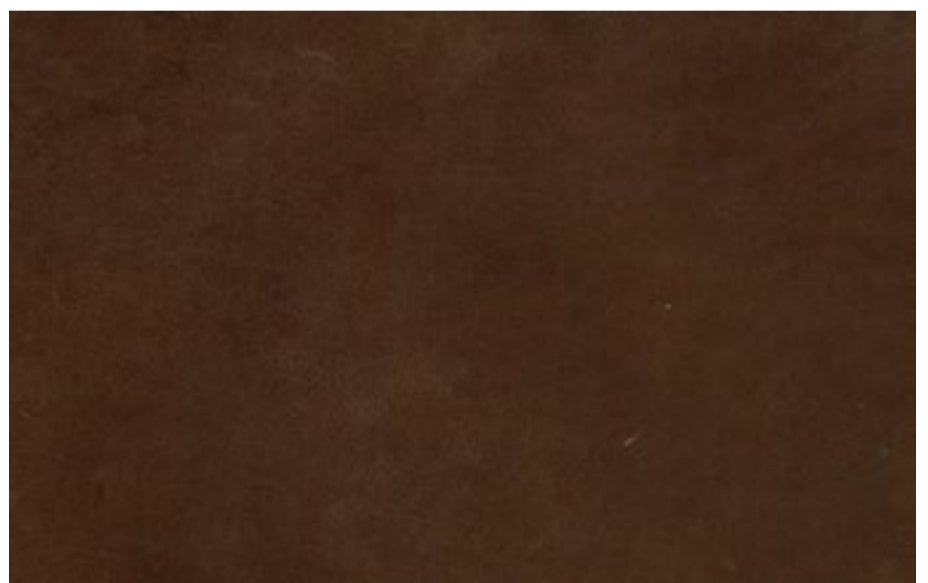
WILD G92144\_zafferano | saffron yellow



WILD G92143\_verde | green



WILD G92142\_marmotta | marmot



WILD G716\_marrone\_brown

**i** Pelli conciate al cromo, asciugate sottovuoto, rifinite con aniline e carteggiate manualmente ottenendo un effetto invecchiato. Particolarità di questo articolo è il connubio tra l'effetto "vintage" e un tatto vellutato.  
 Chrome-tanned leathers, dry vacuum leather finished with aniline and manually buffed obtaining a worn-look.  
 A special combination between an old-fashioned vintage look and the superbly soft touch.

## ANTIQUE CAT. G



PELLE NABUK | NABUK

SPESSORE\_THICKNESS : 1,2 - 1,4 mm

GRANA\_GRAIN : stampata | printed

COLORE\_COLOUR: non uniforme | not uniform

ASPETTO\_SURFACE : opaco | matt

IDRO REPELENTE | WATER PROOF



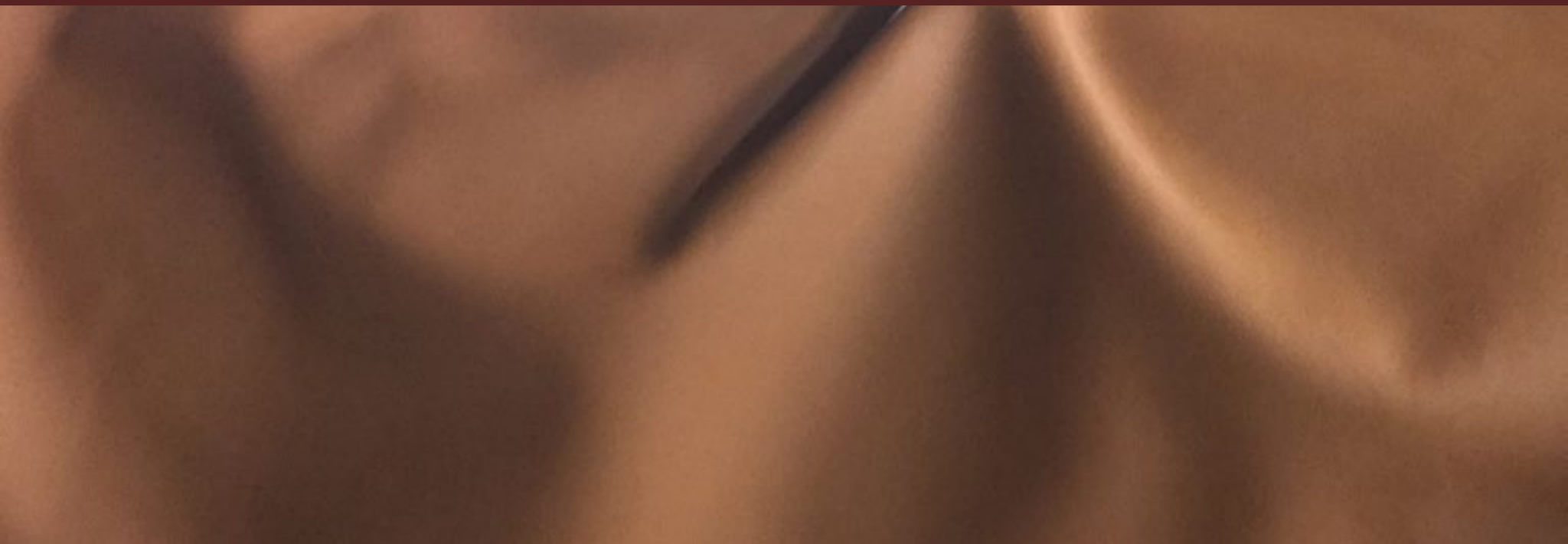
ANTIQUE G717\_grigio | grey



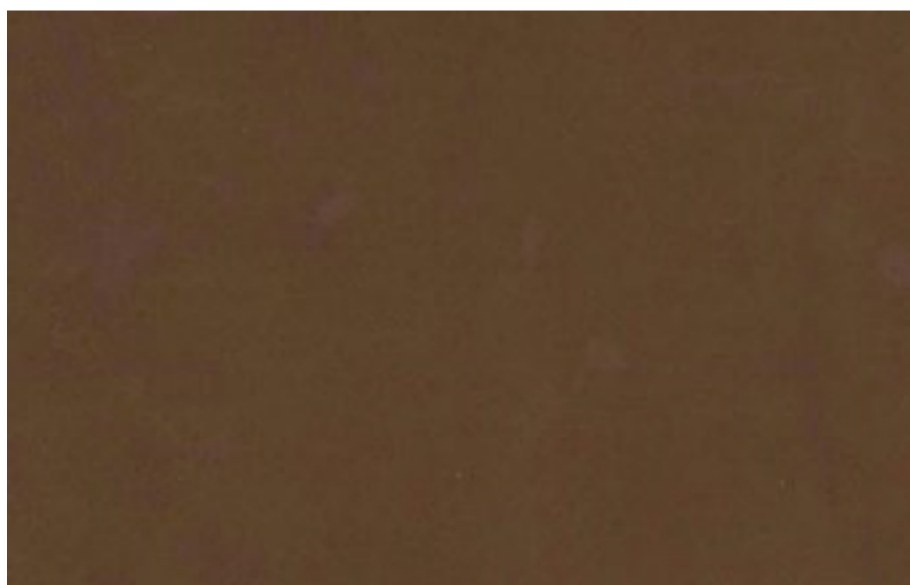
ANTIQUE G718\_cappuccino

## WAX

## CAT. F

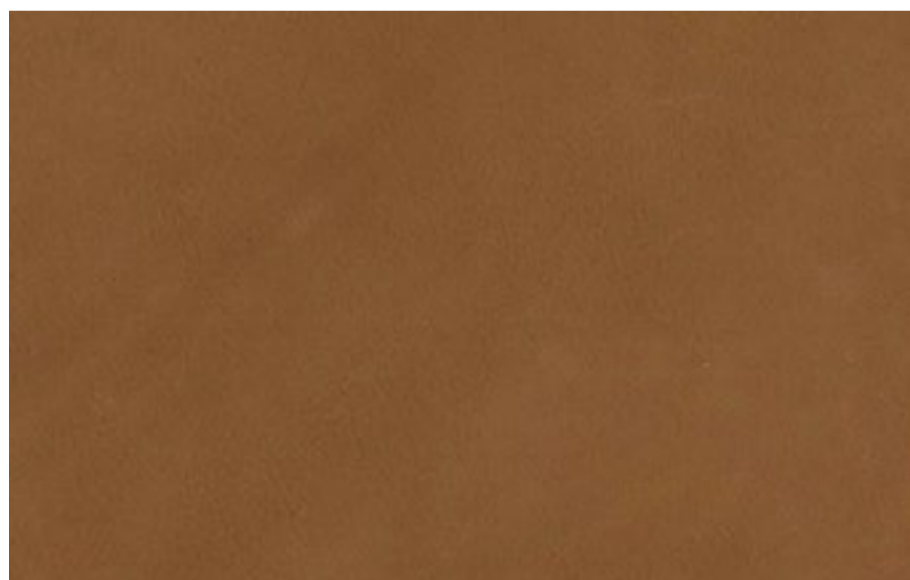


Pelle naturale trattata a cera.  
Natural wax-treated leather .

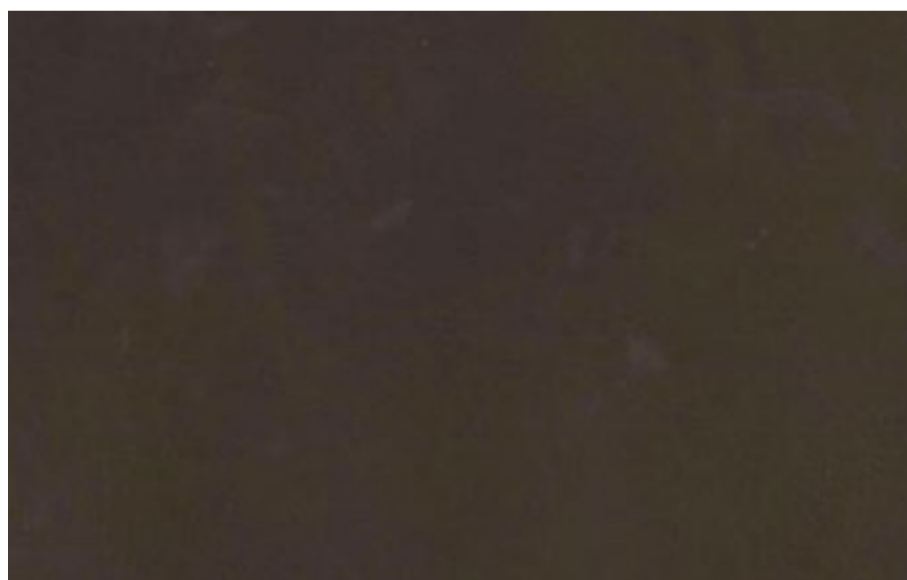


WAX F92118\_tabacco | tobacco

SPESSORE\_THICKNESS : 1,2 - 1,4 mm  
GRANA\_GRAIN : grana fine naturale | fine natural grain  
COLORE\_COLOUR: uniforme | uniform  
ASPETTO\_SURFACE : opaco | matt  
TATTO\_TOUCH : liscio | smooth



WAX F92111\_cognac



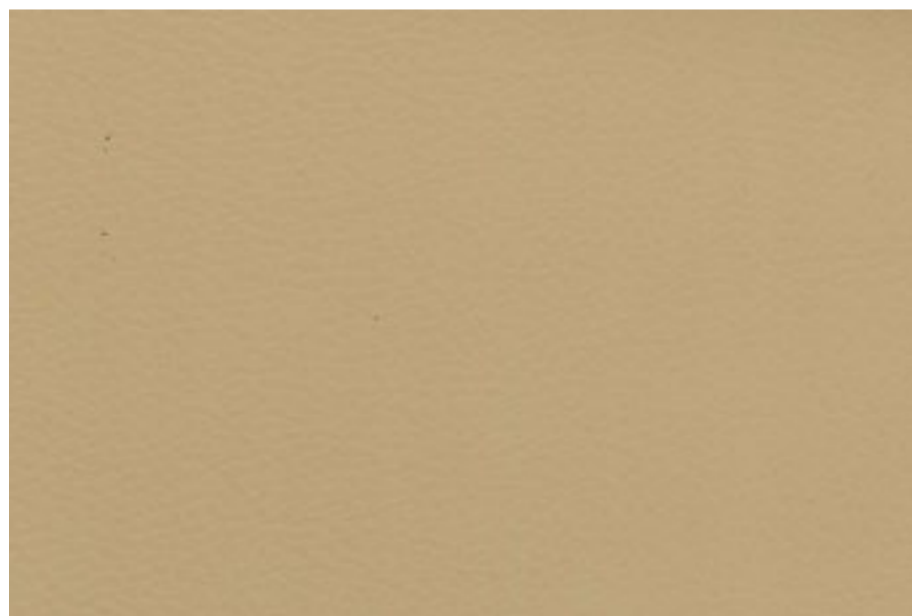
WAX F92115\_testa di moro | dark brown

## ULTRA SOFT CAT. F

SPESSORE\_THICKNESS : 1,0 - 1,2 mm  
GRANA\_GRAIN : grana naturale | natural grain  
COLORE\_COLOUR : uniforme | uniform  
ASPETTO\_SURFACE : semi-lucido | semi-glossy  
TATTO\_TOUCH : liscio | smooth



Pelli conciate al cromo, tinte con aniline e rifinite. Taglia elevata, tatto eccellente, ottima resa, duttile a qualsiasi tipo di applicazione.  
Chrome-tanned leathers, dyed aniline and finished; big size, excellent feel, excellent cutting gain, supple to any type of application.



F92129\_segale | rye



F92126\_argilla | clay



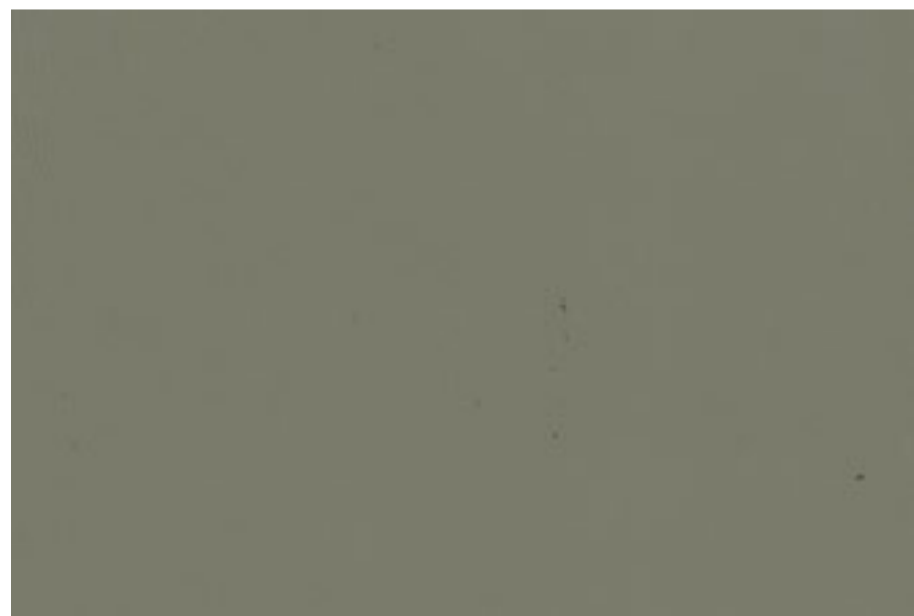
F92128\_elefante | elephant

## ULTRA SOFT CAT. F

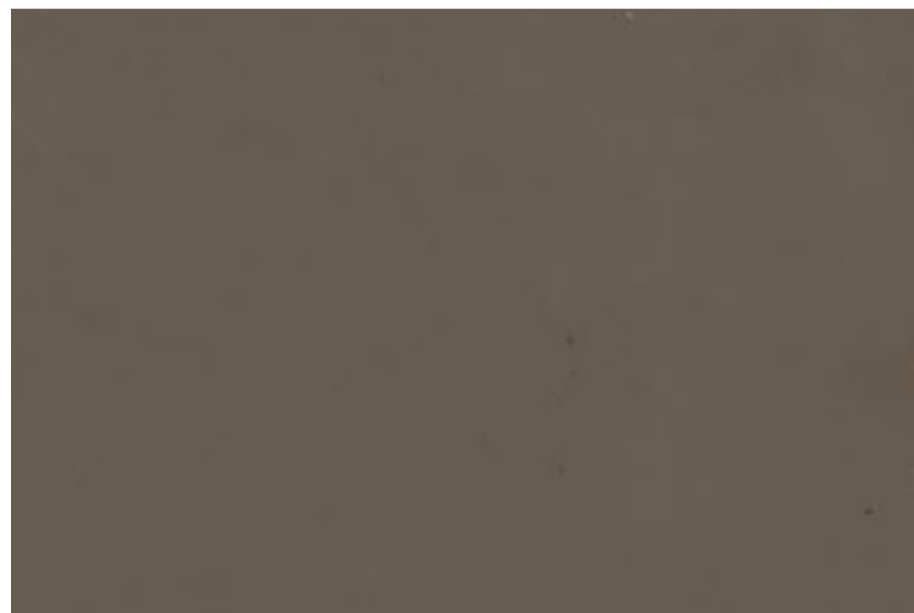
F92157\_kaki



Pelli conciate al cromo, tinte con aniline e rifinite. Taglia elevata, tatto eccellente, ottima resa, duttile a qualsiasi tipo di applicazione.  
Chrome-tanned leathers, dyed aniline and finished; big size, excellent feel, excellent cutting gain, supple to any type of application.



F92158\_cemento | concrete



F92159\_castoro | beaver



F92160\_castagno | chestnut

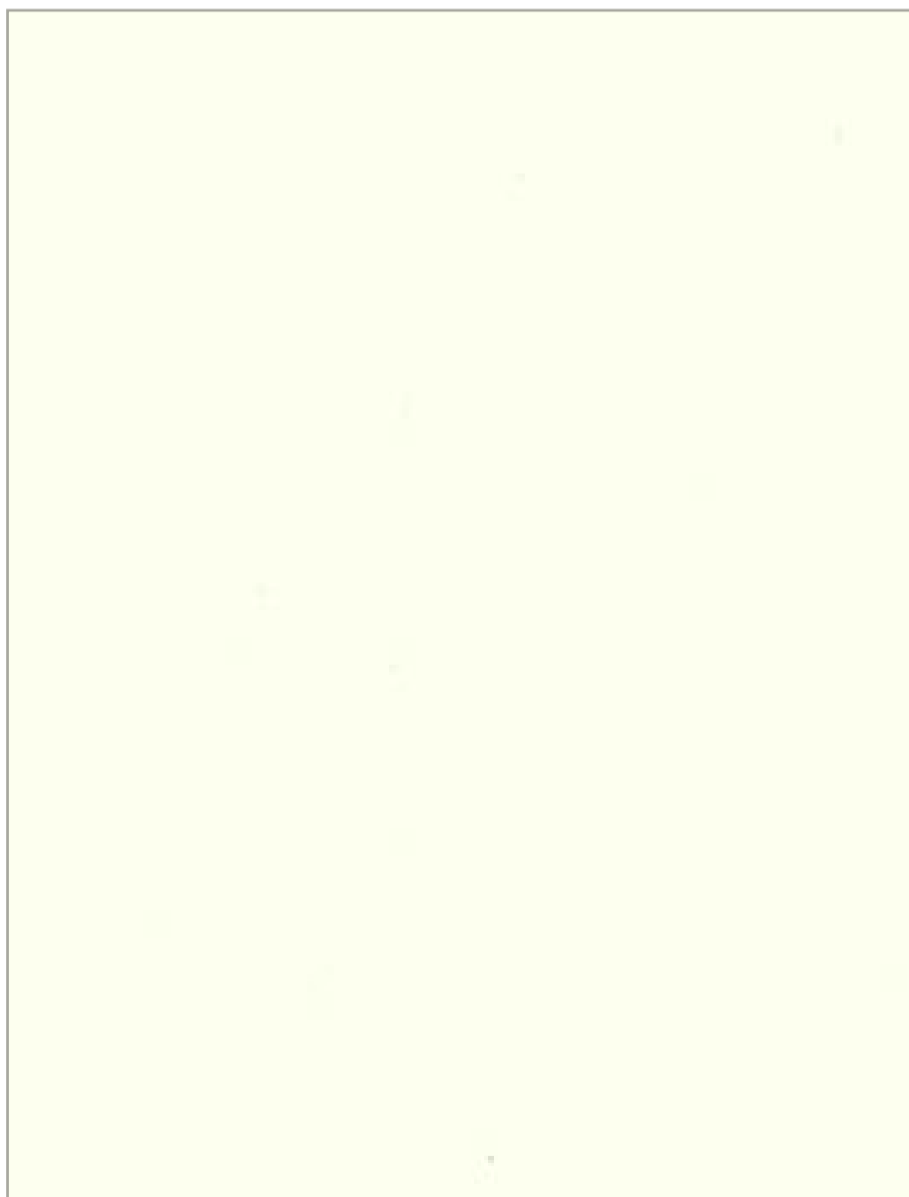
## ULTRASOFT CAT. G



SPESSORE\_THICKNESS : 1,0 - 1,2 mm  
GRANA\_GRAIN : grana fine naturale | fine natural grain  
COLORE\_COLOUR : uniforme | uniform  
ASPETTO\_SURFACE : opaco | matt  
TATTO\_TOUCH : liscio | smooth



Pelli lavorate con le migliori tecniche per esaltarne le caratteristiche estetiche e di tatto. Grane naturali e morbide.  
Leathers are tanned with the best techniques in order to intensify their look and touch. Natural and smooth grain.



G92134\_latte | milk



G92135\_avorio | ivory

## ULTRASOFT CAT. G



G714\_sabbia | sand



G92130\_lino | linen



G92131\_camoscio | chamois



G92123\_segale | rye



G715\_castoro | beaver

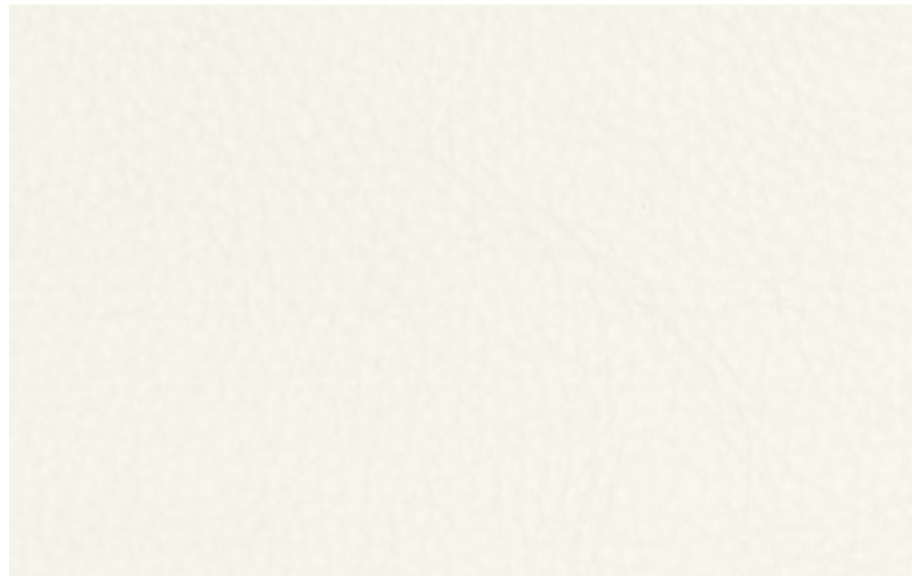
## PIUMONE CAT. G



SPESSORE\_THICKNESS : 2,0 - 2,2 mm  
GRANA\_GRAIN : grana grossa naturale | significant natural grain  
COLORE\_COLOUR : uniforme | uniform  
ASPETTO\_SURFACE : semi lucido | semi-glossy  
TATTO\_TOUCH : liscio | smooth



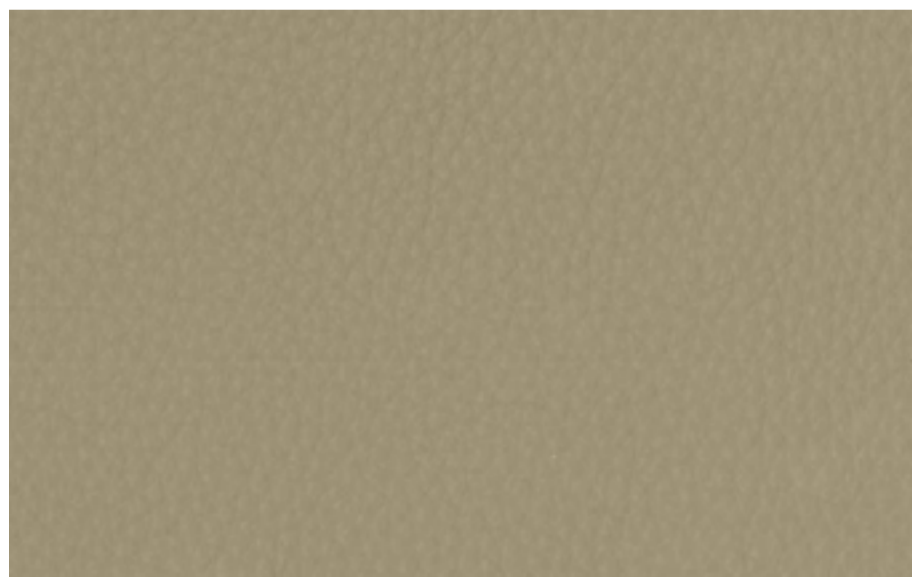
Pelle dall'elevato spessore con un tatto e una mano eccellenti e con caratteristiche di tenuta molto alte.  
The softness of the leather but much thicker and stronger with an excellent touch and texture.



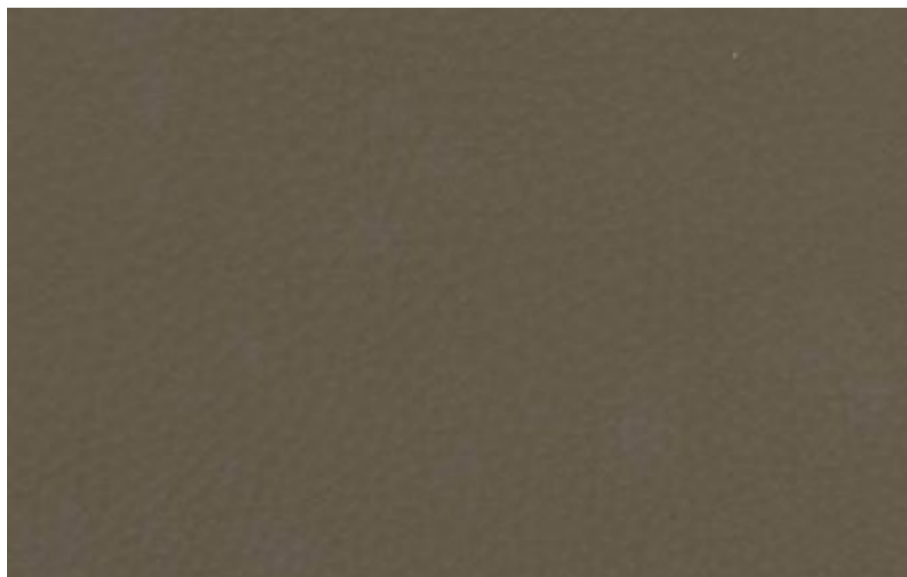
PIUMONE G705\_bianco | white



PIUMONE G709\_latte | milk



PIUMONE G707\_tortora | dove brown



PIUMONE G708\_mastice | mastic

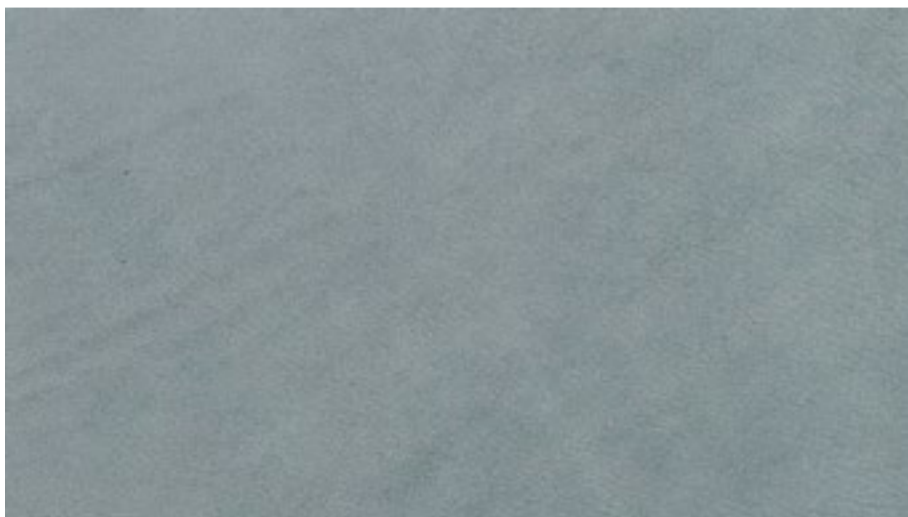


## TOUCH CAT. LUXE



Particolarità di questa pelle è il tatto morbidissimo.  
Peculiarity of this leather is a very soft touch, very appealing.

SPESSORE\_THICKNESS : 1,3 - 1,5 mm  
GRANA\_GRAIN : grana fine naturale | fine natural grain  
COLORE\_COLOUR : non uniforme | not uniform  
ASPETTO\_SURFACE : semi-lucido | semi-glossy  
TATTO\_TOUCH : vellutato | velvety



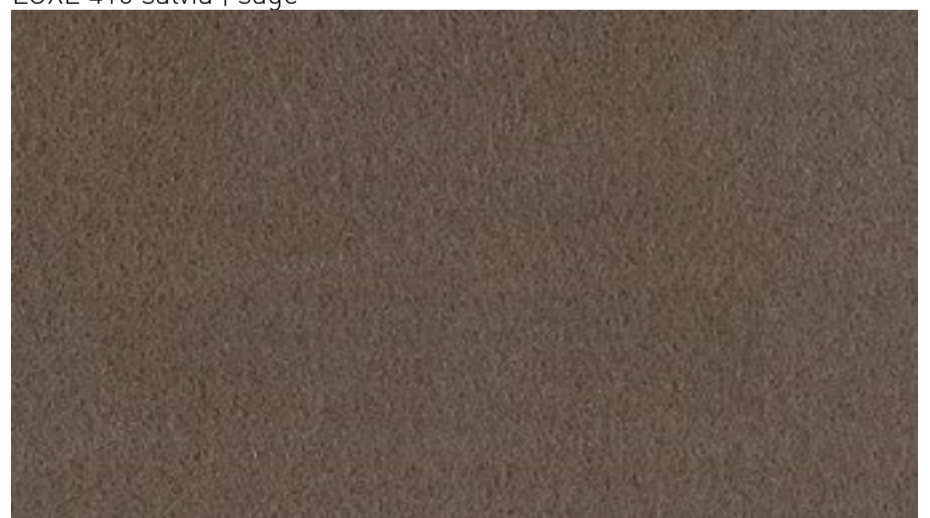
LUXE 420 cielo | sky



LUXE 416 salvia | sage



LUXE 701\_cammello | camel



LUXE 417\_marmotta | marmot

## SKIN CAT. LUXE



Pelli asciugate sottovuoto e tinte con anilina. Particolarità di questo articolo è un aspetto naturale, una mano piena, un tatto vellutato e una leggera scrivenza che ne fanno al momento la massima espressione tecnologicamente raggiungibile per un pellame all'anilina.

Dry vacuum leathers, dyed aniline. Particularity of this article is a natural look, a full hand, a velvety and writing that make these the highest expression technologically achievable for the aniline leather.

SPESSORE\_THICKNESS : 1,6 - 1,8 mm  
GRANA\_GRAIN : grana fine naturale | fine natural grain  
COLORE\_COLOUR : uniforme | uniform  
ASPETTO\_SURFACE : opaco | matt  
TATTO\_TOUCH : vellutato | velvety



SKIN LUXE 401\_crema | cream



SKIN LUXE 400\_fango | mud

## NABUK | NUBUK CAT. LUXE

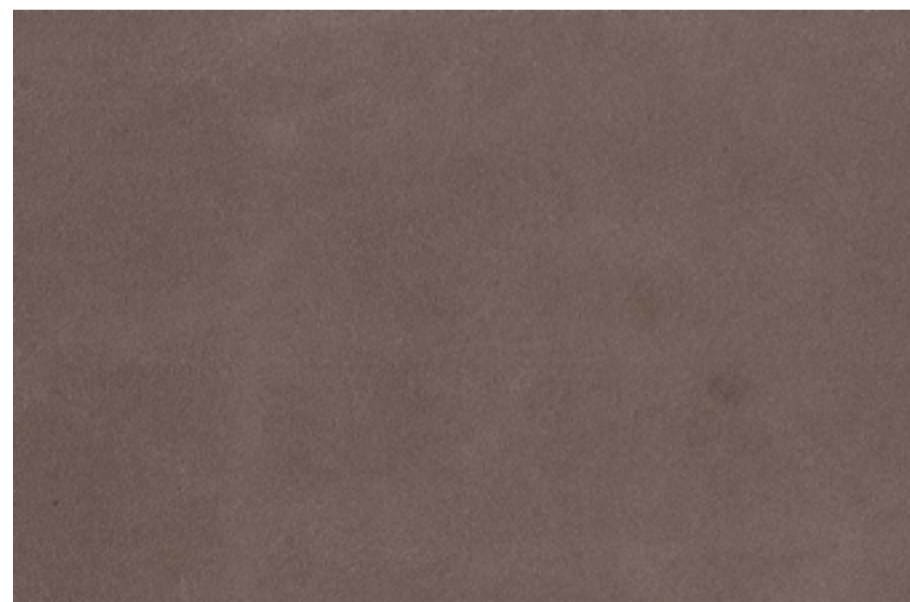


Pelli conciate al cromo, tinte con aniline, asciugate sottovuoto e nabucate, con una mano e un tatto di altissimo pregio.  
Chrome-tanned leathers, dyed aniline, dry vacuum and suede finish, with hand and a touch of highest quality.

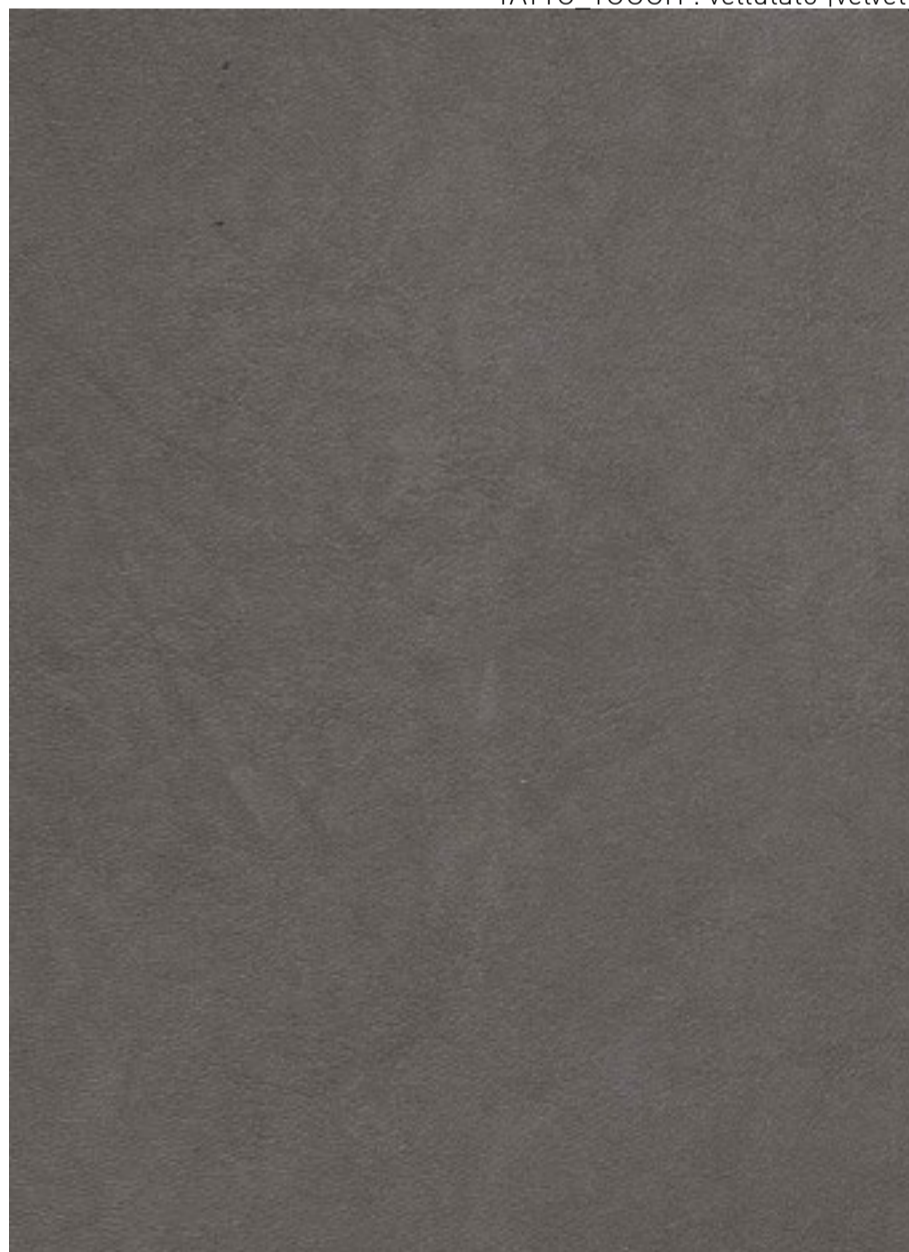
SPESSORE\_THICKNESS : 1,3 - 1,5 mm  
GRANA\_GRAIN : grana fine naturale | fine natural grain  
COLORE\_COLOUR : uniforme | uniform  
ASPETTO\_SURFACE : opaco | matt  
TATTO\_TOUCH : vellutato | velvety



LUXE 412\_sabbia | sand



LUXE 419\_marrone | brown

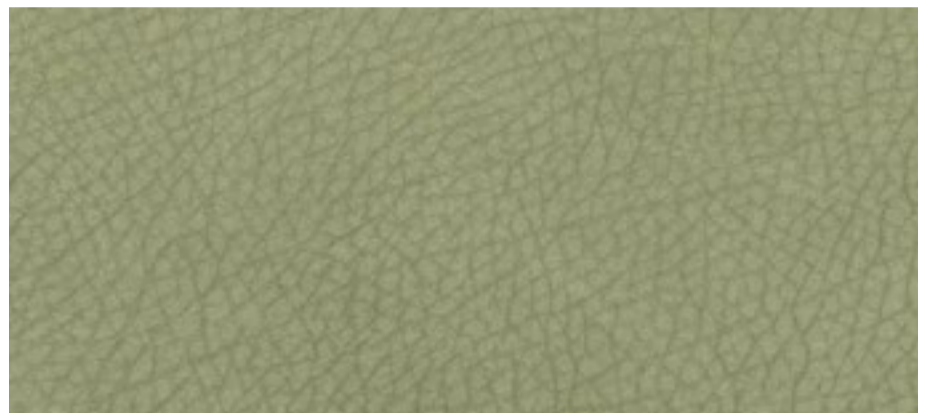


LUXE 421\_fumo | smoke

## NABUK | NUBUK CAT. F



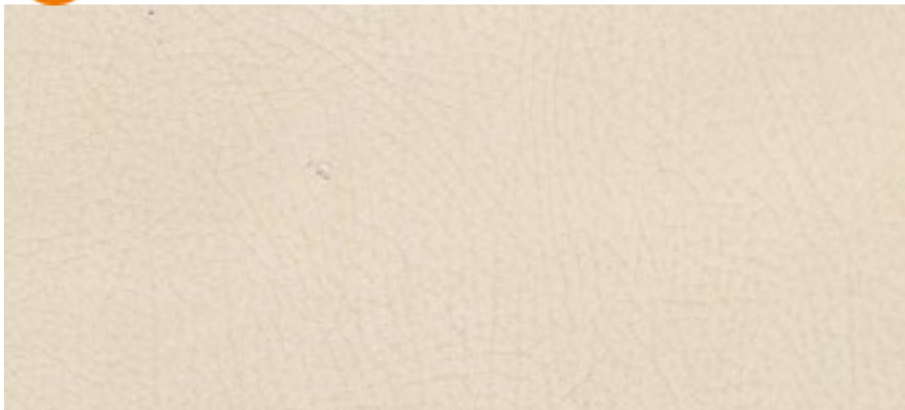
SPESSORE\_THICKNESS : 1,4 - 1,6 mm  
GRANA\_GRAIN : grana grossa naturale | significant natural grain  
COLORE\_COLOUR: uniforme | uniform  
ASPETTO\_SURFACE : opaco | matt  
TATTO\_TOUCH : vellutato | velvety



NABUK F92211\_salvia | sage



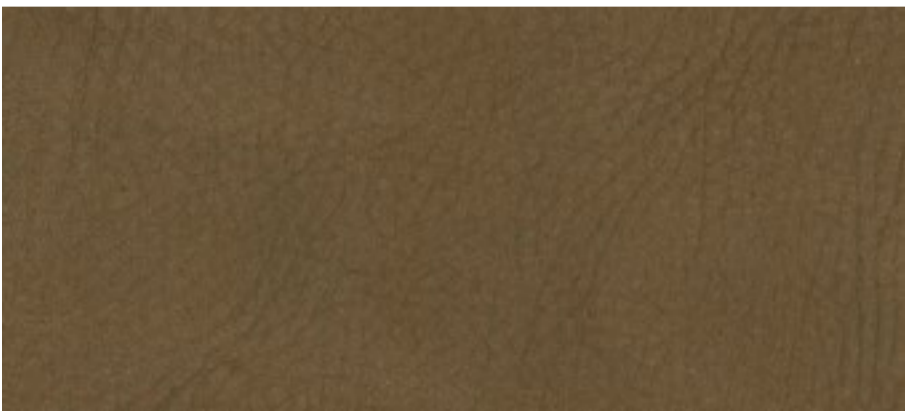
Pelli conciate al cromo, tinte con aniline, asciugate sottovuoto e nabucate, con una mano e un tatto morbidissimo.  
Chrome-tanned leathers, dyed aniline, dry vacuum and suede finish, with a very soft touch.



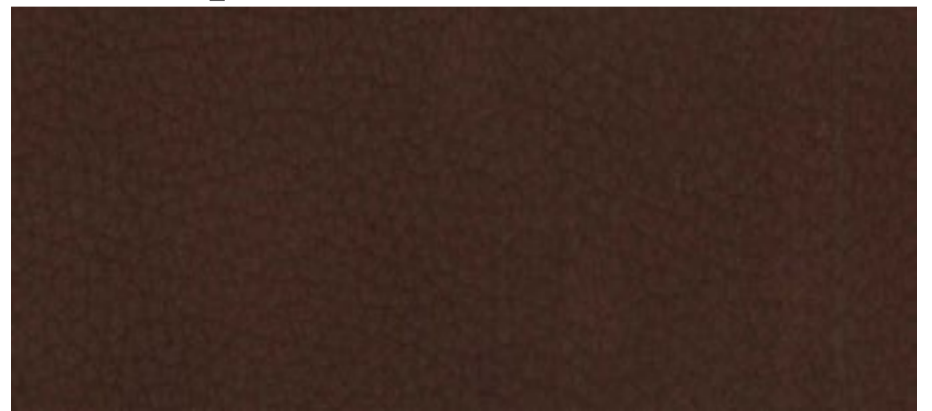
NABUK F92108\_sabbia | sand



NABUK F92509\_avana | havana



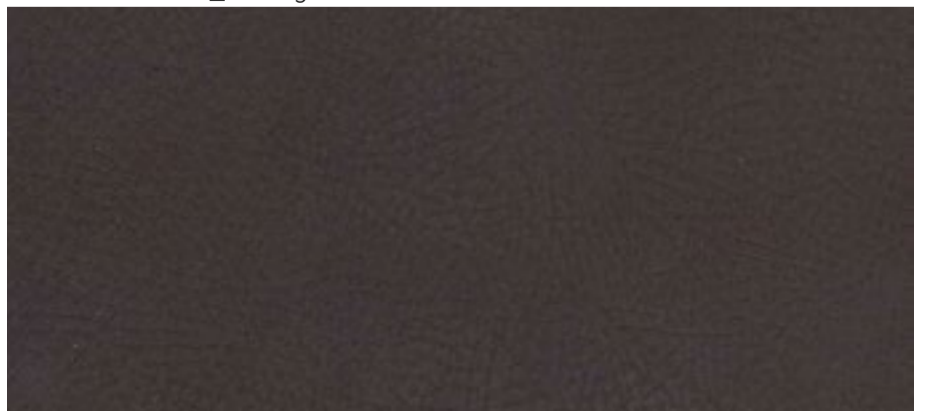
NABUK F92113\_marmotta | marmot



NABUK F92109\_castagna | chestnut



NABUK F92155\_fumo | smoke



NABUK F92513\_grigio scuro | dark grey

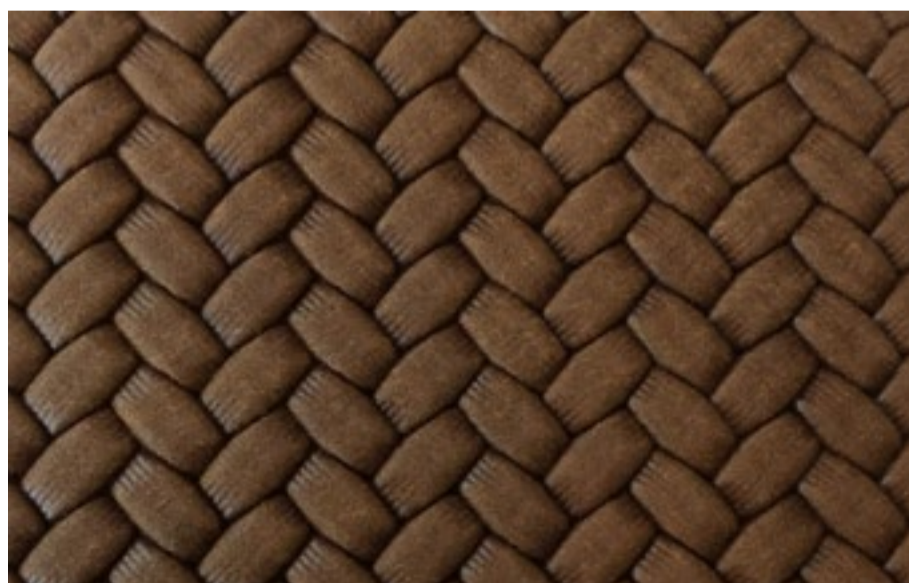
PELLE STAMPATA / PRINTED LEATHER  
CAT. LUXE



Luxe 424 siena



Luxe 423 military



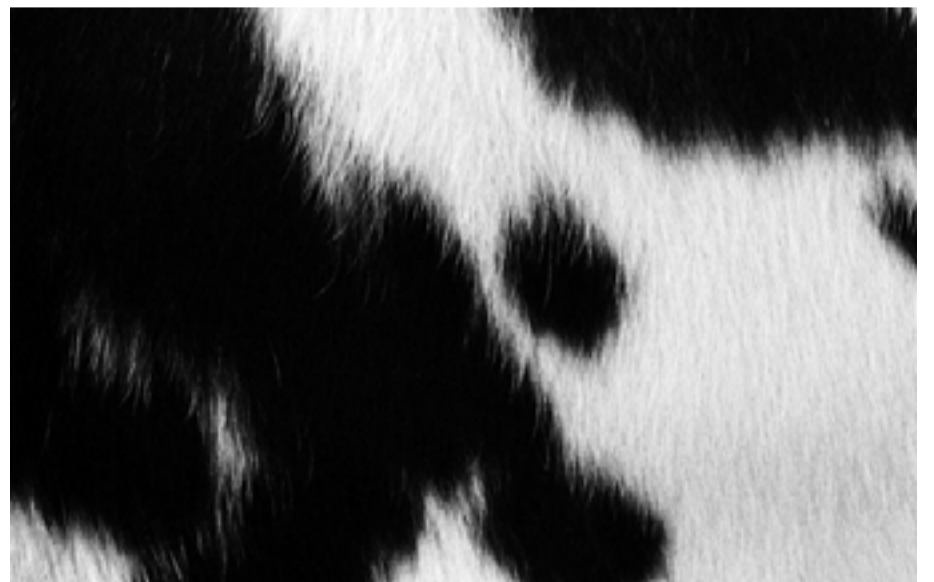
Luxe 425 tabacco

# CAVALLINO | COW HIDE CAT. PONY

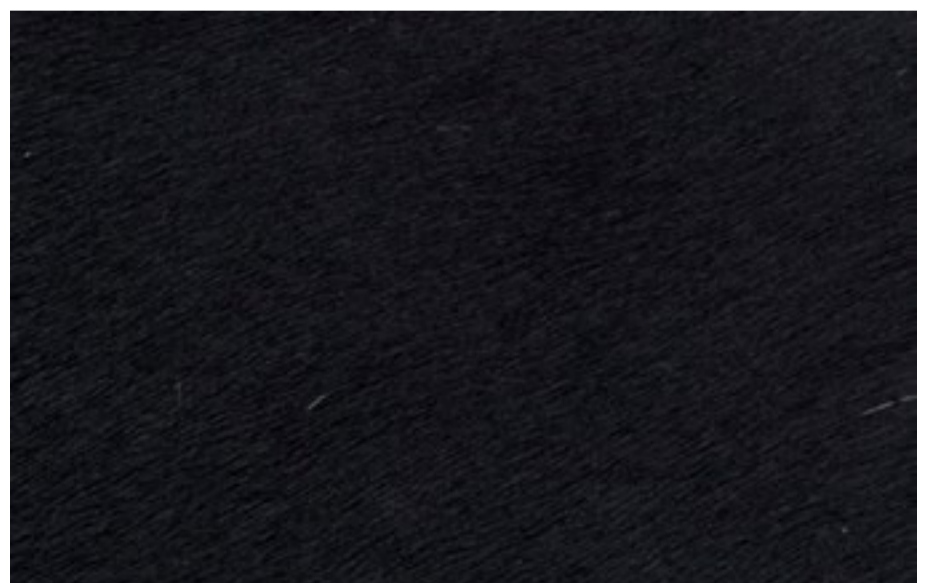
SPESSORE\_THICKNESS : 1,8 - 2,0 mm  
COLORE\_COLOUR: non uniforme | not uniform



PONY\_bianco & marrone | white & brown



PONY\_bianco & nero | black & white



PONY\_nero | black



Il Pony è pelle di origine bovina accuratamente selezionata per omogeneità di maculatura e peluria, i manti garantiscono un equilibrio armonico del rivestimento. Le varieguate dimensioni delle macchie rendono ogni oggetto rivestito differente dall'altro e quindi unico. Il Pony non è sottoposto ad alcun trattamento, in modo da conservare intatta la sua naturale bellezza. Cavallino (Pony Skin) is a cow hide leather selected for the consistency of their maculations and hair, the coats are a guarantee of finely balanced upholstery. The different sizes of the spots ensure that every upholstered item is totally unique and original. In order to maintain its natural beauty intact, Cavallino leather is not subject to any kind of treatment.

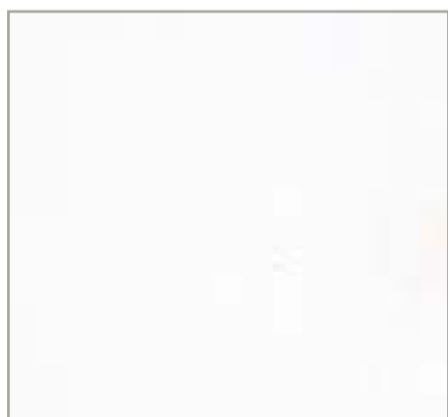
## CUOIO | HIDE



C28\_fango | mud



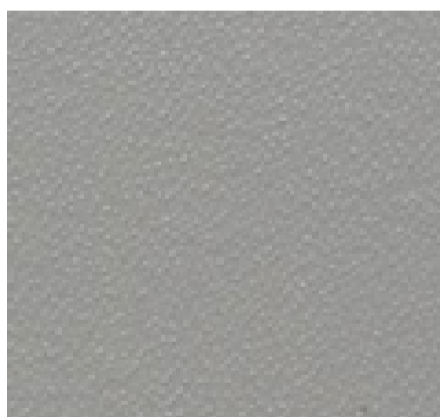
C32\_caffè | coffee



C10\_bianco | white



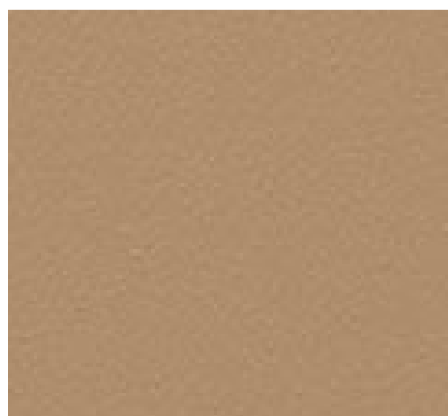
C23\_avorio | ivory



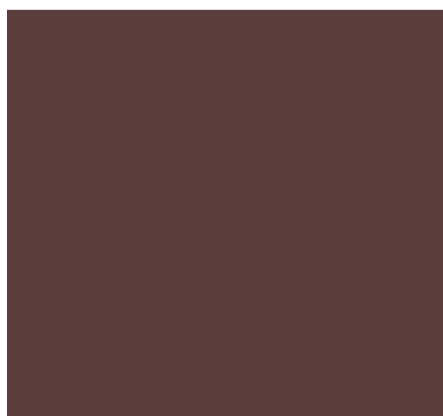
C01\_argento | silver



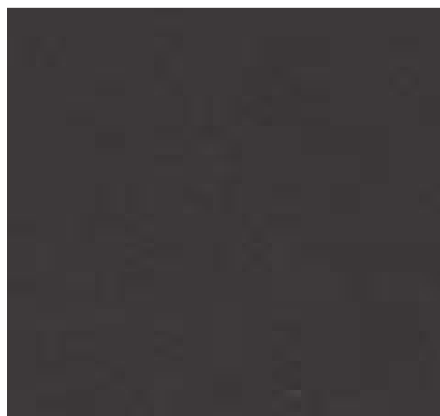
C17\_sabbia | sand



C16\_naturale | natural



C 115\_cognac



C11\_testa di moro | dark brown



C09\_nero | black

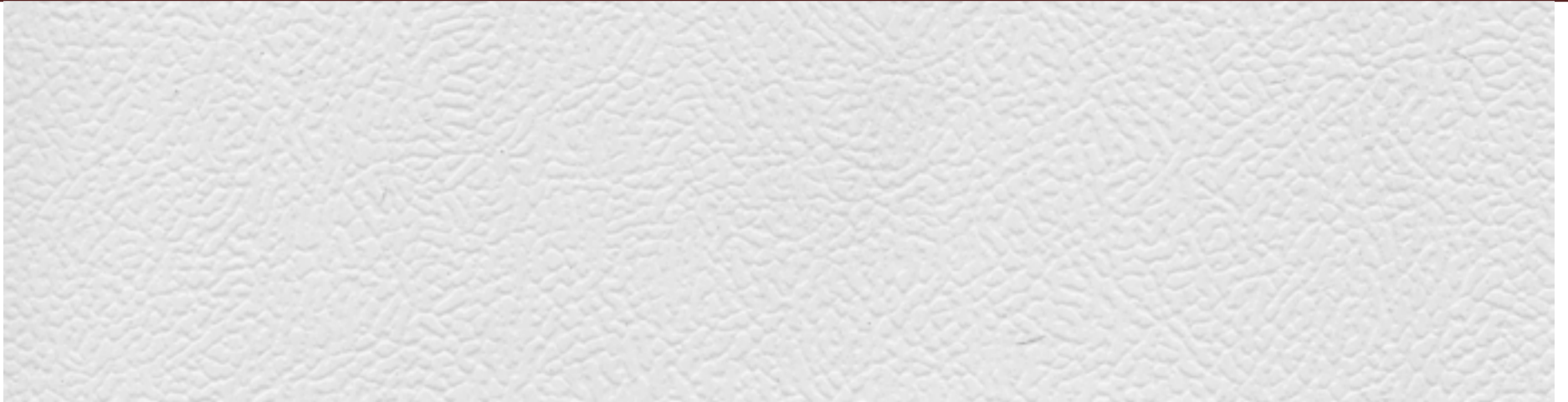
**ALIVAR**

ECOPELLE  
ECO LEATHER





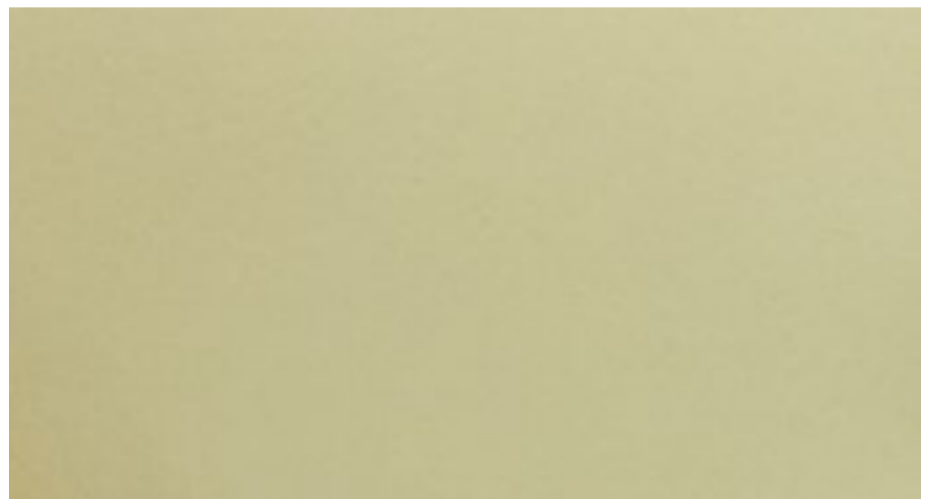
## ECOPELLE | ECO LEATHER CAT. B



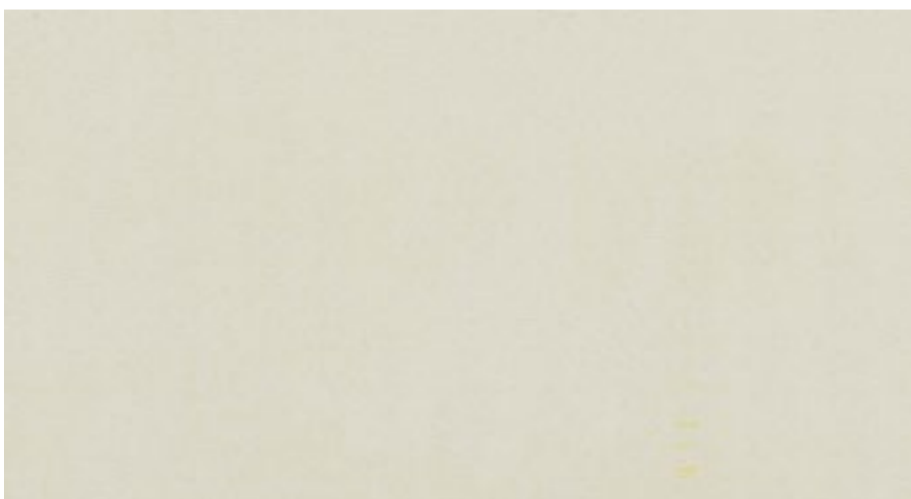
B3147 bianco\_white | grana fine\_fine-grained



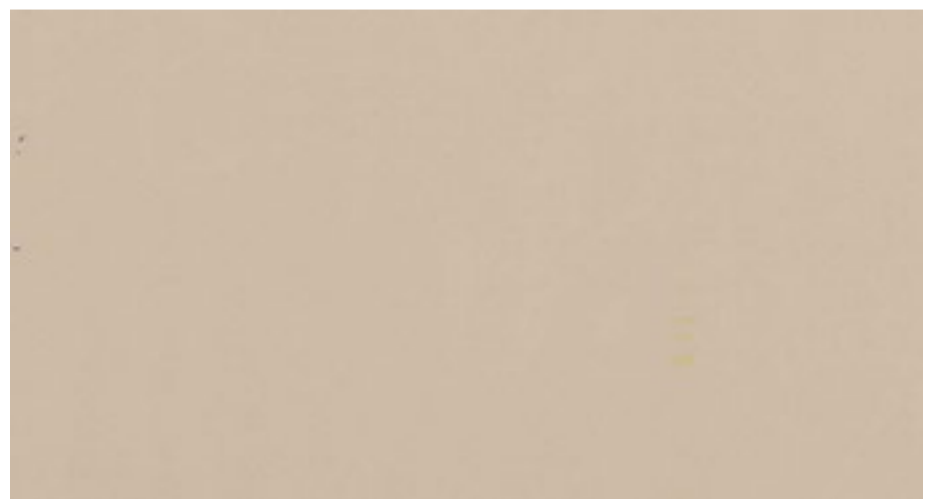
B2066 bianco\_white | grana media\_medium-grained



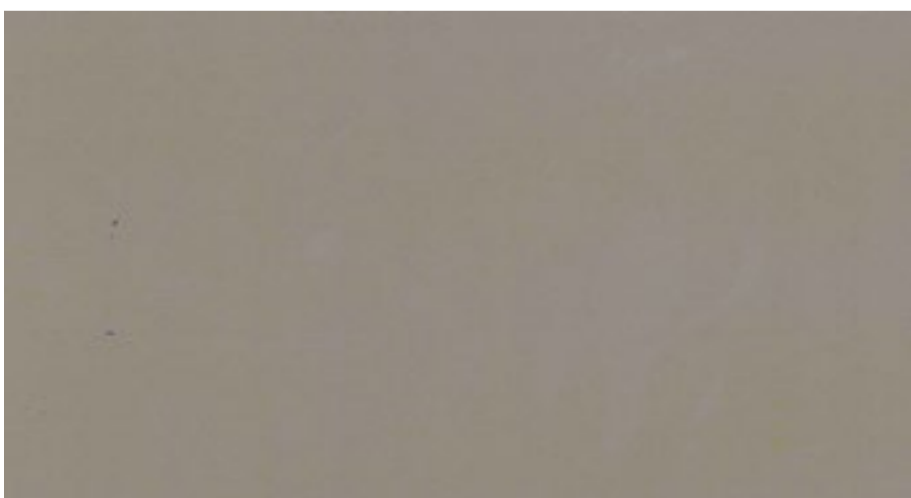
B3179 crema\_cream | grana media\_medium-grained



B3148 sabbia\_sand | grana fine\_fine-grained



B3074 beige | grana fine\_fine-grained

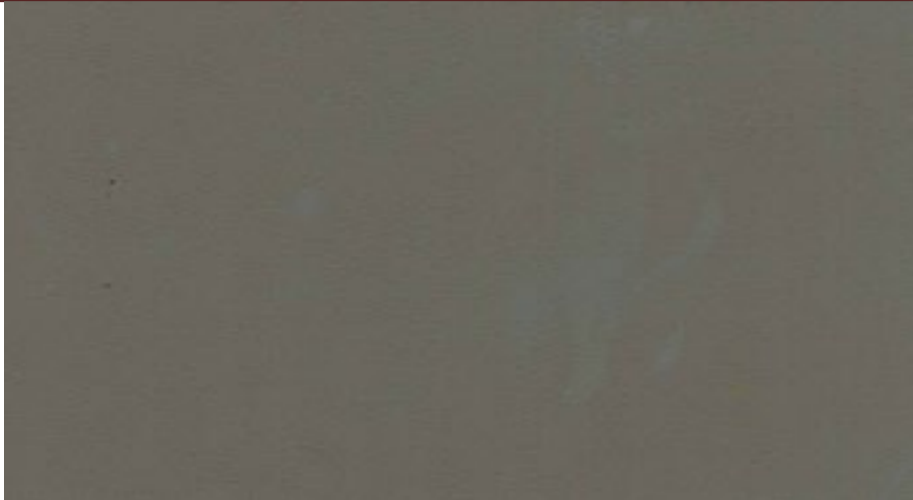


B3149 castoro\_beaver | grana fine\_fine-grained



B3150 cappuccino | grana media\_medium-grained

## ECOPELLE | ECO LEATHER CAT. B



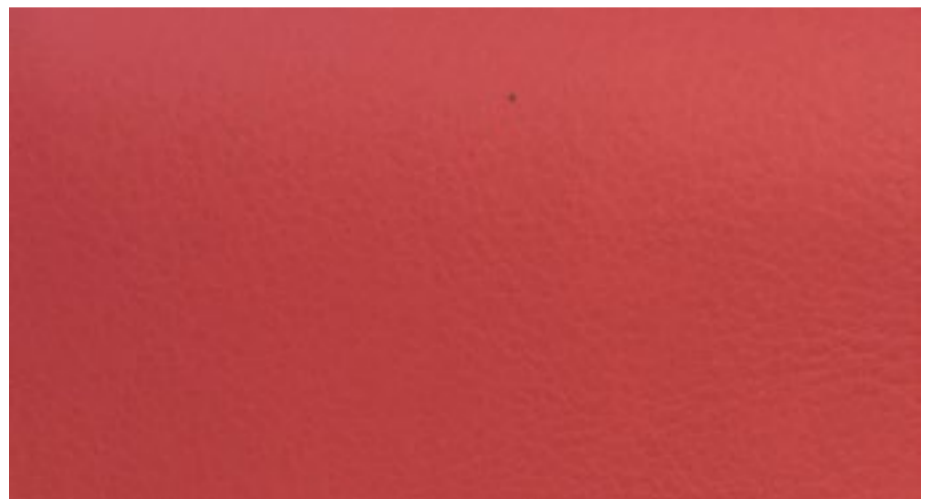
B3151 grigio-marrone\_grey-brown | grana media\_medium-grained



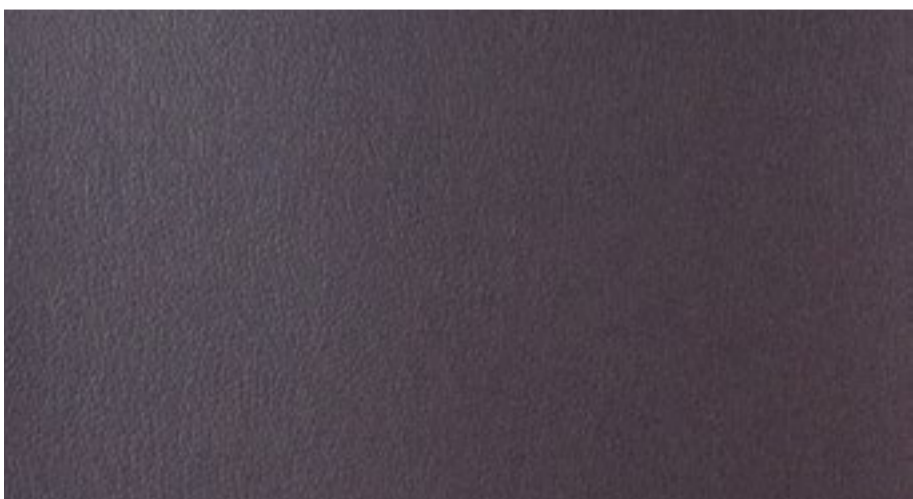
B3152 cioccolato\_chocolate | grana fine\_fine-grained



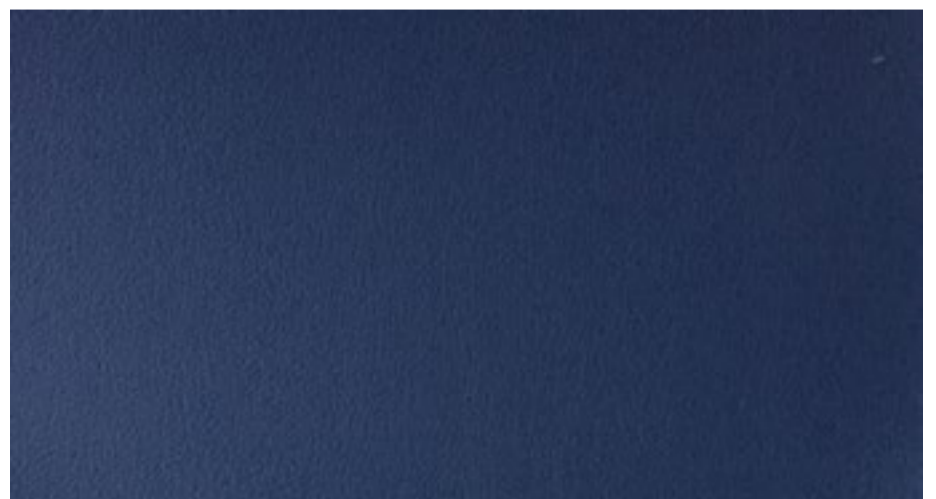
B3176 testa di moro\_dark brown | grana fine\_fine-grained



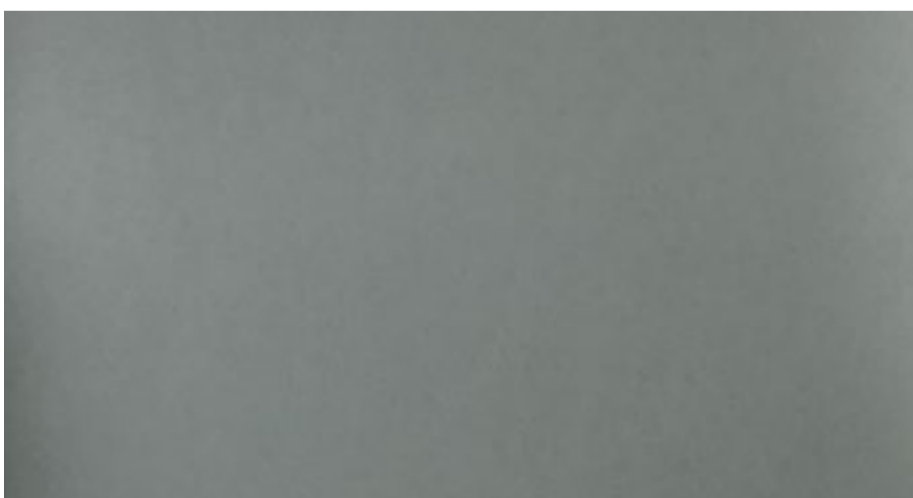
B3070 rosso\_red | grana media\_medium-grained



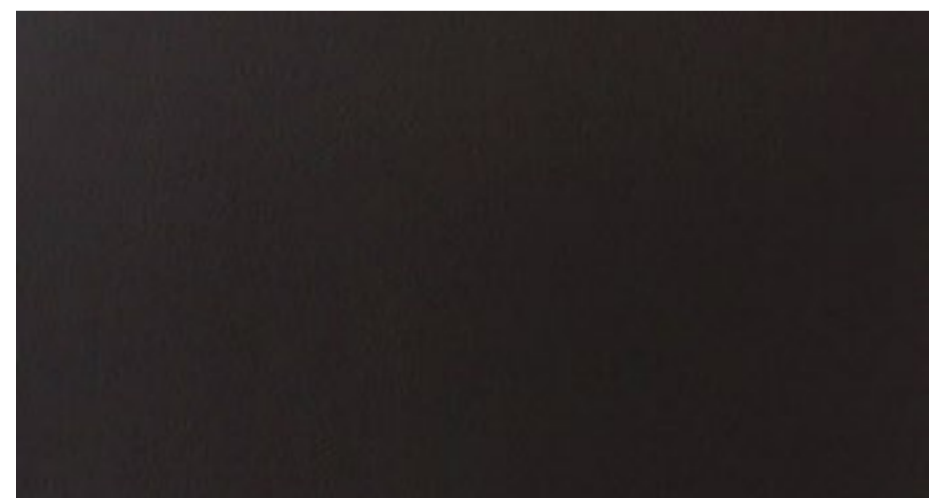
B3174 vinaccia\_red purple | grana fine\_fine-grained



B3177 blue | grana fine\_fine-grained



B3175 grigio\_grey | grana fine\_fine-grained



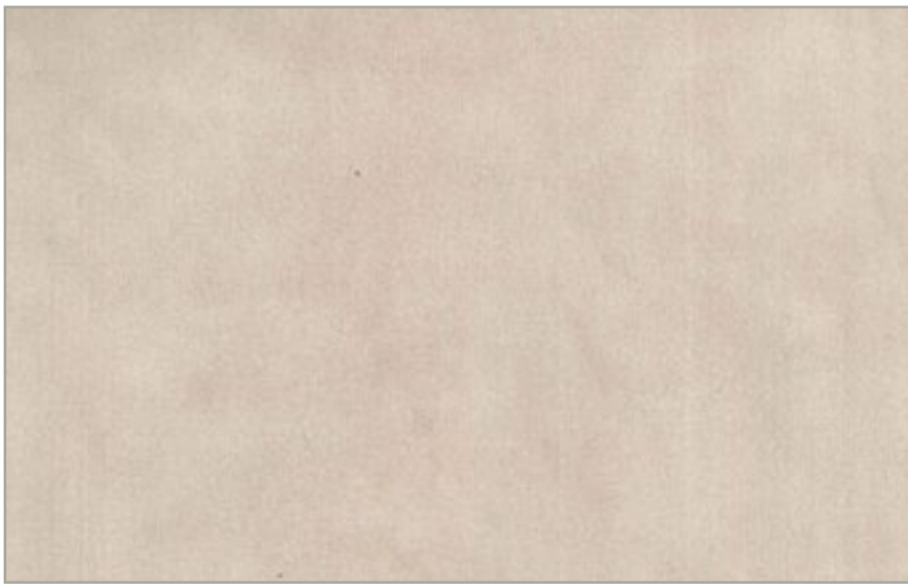
B2067 nero\_black | grana fine\_fine-grained

## CLOUDY CAT. C ECOPELLE | ECO LEATHER



Ecopelle Cloudy è la scelta ideale per chi vuole un rivestimento di impatto estetico naturale e di facile e pratica manutenzione. Ha superato con ottimi risultati tutti i test di resistenza, abrasione, rottura e solidità del colore, evidenziando le sue eccezionali caratteristiche di praticità d'uso e di durata nel tempo.

Cloudy eco-leather is the ideal choice for those who want upholstery with a natural look and easy to clean and maintain. Cloudy has passed brilliantly all the tests of resistance, abrasion, breaking point and colour fastness, displaying exceptional features of practicality in use and durability.



C2335 sabbia | sand



C2337 elefante\_elephant



C2336 marmotta | marmot



C2338 talpa | taupe

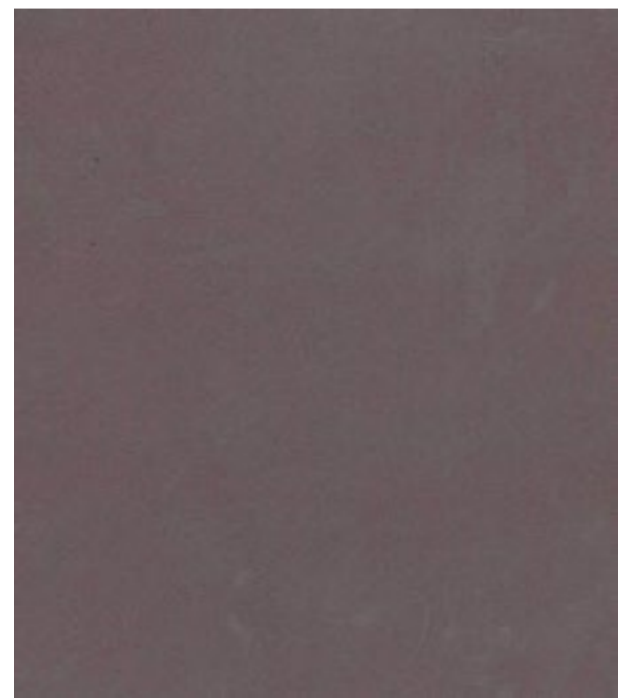
## ECONABUK | ECO NUBUK CAT. C



B3187 sabbia\_sand



B3186 castoro\_beaver



B3189 cioccolato\_chocolate



l' Eco nubuk è un articolo sintetico con le stesse caratteristiche sia estetiche che tattili delle pelli conciate. Di effetto estremamente naturale ha una superficie morbida e vellutata simile al nubuk. Mantiene inalterate durata e qualità semplicemente con acqua e sapone.

It's a product made of innovative materials inspired by chrome-tanned leather, is a man-made product that reproduces the same aesthetic and tactile characteristics of the nubuk. Eco nubuk maintains its long-lasting beauty by simply using soap and water.

TESSUTI  
FABRICS



## LIGHT



CAT. B 3153 (72% VI - 28% LI)



CAT. C 2270 (38% PC - 36% VI - 15% CO - 9% LI - 2% AF)



CAT. C 2385 (85% PES - 15% CO)



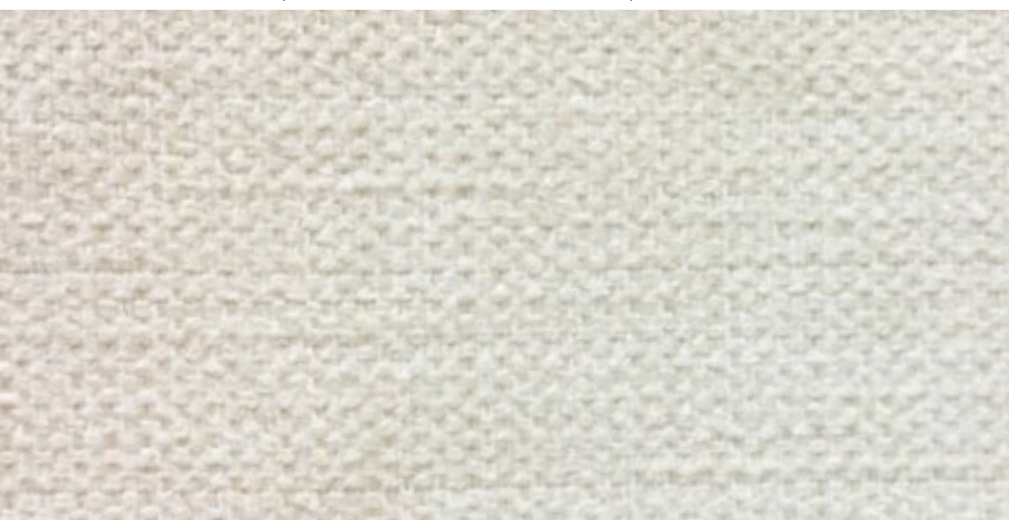
CAT. C 2341 (49% LI - 32% CO - 19% VI)



CAT. C 2316 (59% VI - 33% CO - 8% LI)



CAT. D 5073 (53% VI - 33% CO - 14% LI)



CAT. D 5067 (46% CO - 45% VI - 9% LI)

## LIGHT



CAT. D 5099 (52% LI - 48% VI)



CAT. D 5168 (64% VI - 15% PL - 11% CO - 10% LI)



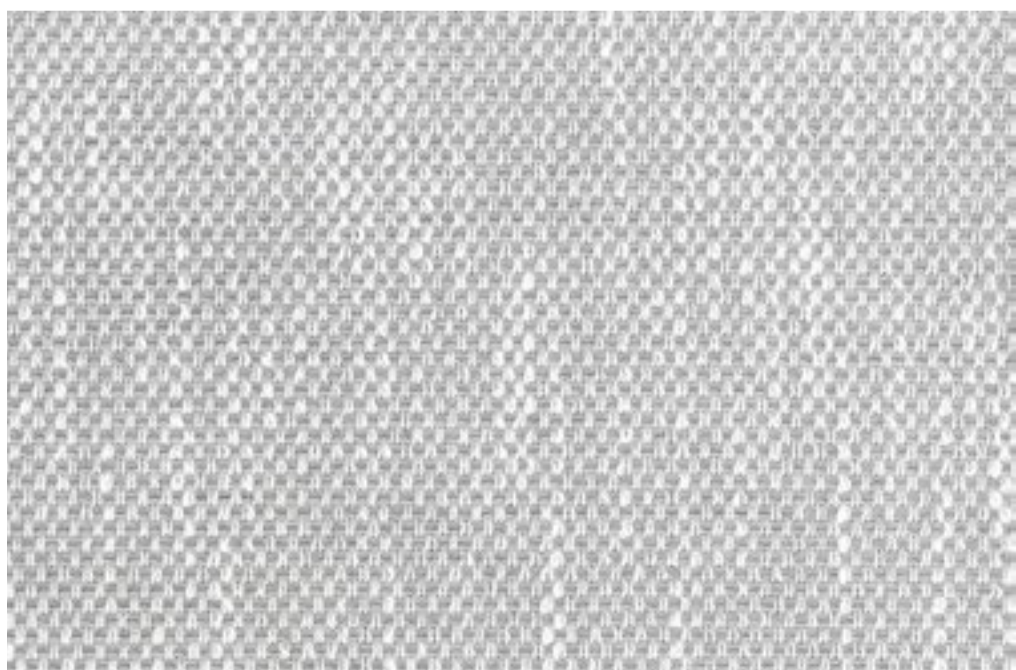
CAT. D 5186 (40% VI - 29% CO - 14%PC - 10% LI - 6% PL)



CAT. D 5220 (70% VI - 30% LI)



CAT. D 5188 (60% LI - 40% CO)

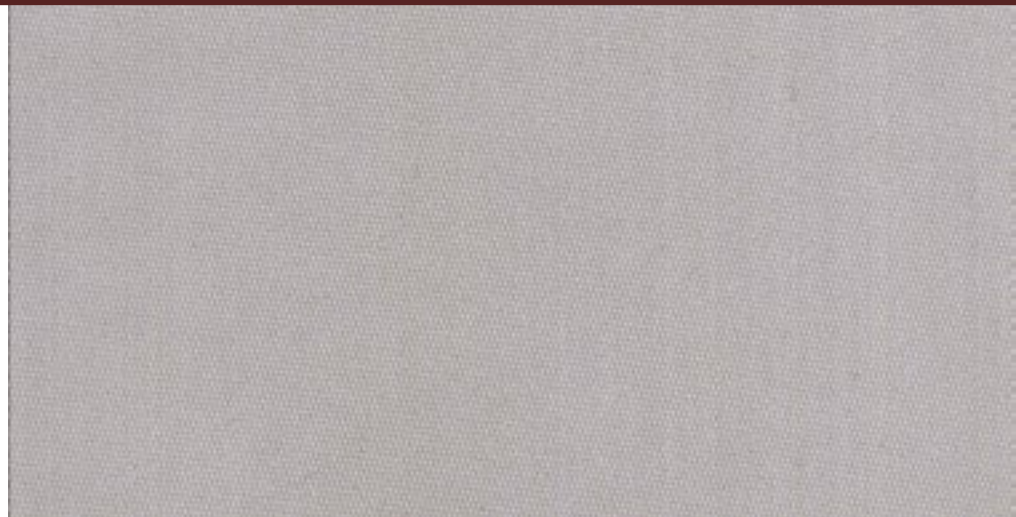


CAT. D 5197 (30% VI - 20% PL - 20% AC - 15% CO - 15% LI)

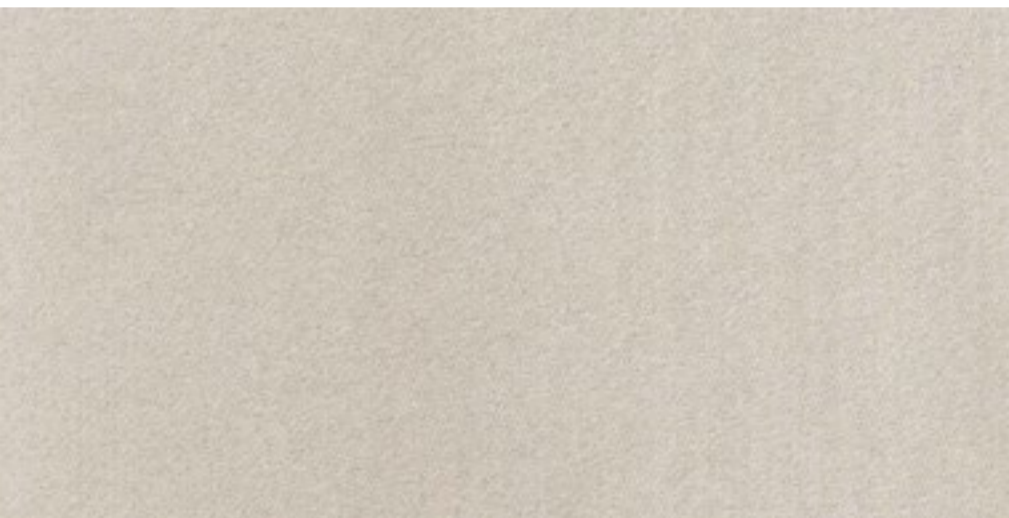
## BEIGE



CAT. A 4010 (100% PL)



CAT. A 4018 (91% CO - 9% PL)



CAT. B 3160 (90% CO - 10% PL)



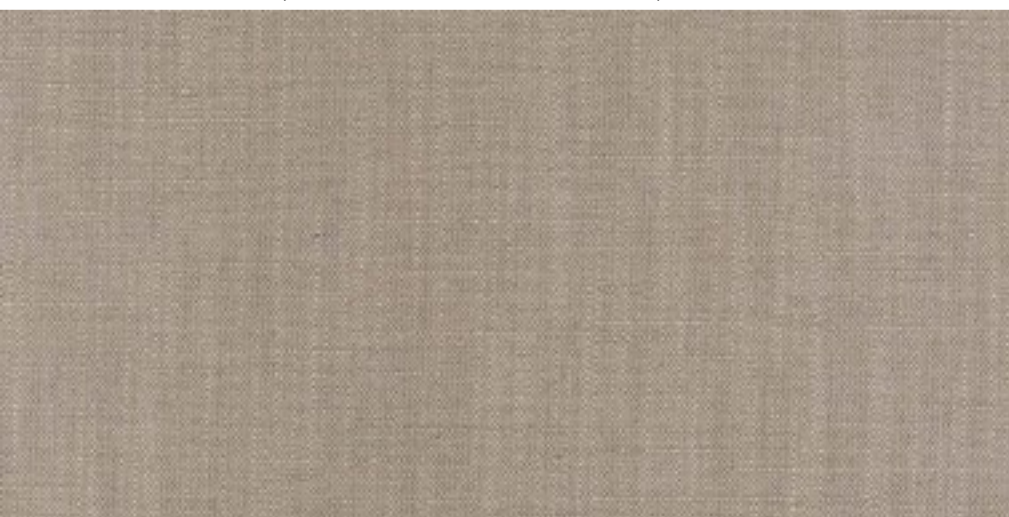
CAT. B 3154 (72% VI - 28% LI)



CAT. B 3188 (71% CO - 21% PL - 8% PC)



CAT. B 3155 (54% VI - 24% CO - 22% LI)



CAT. B 3159 (72% VI - 28% LI)



## BEIGE



CAT. C 2386 (85% PES - 15% CO)



CAT. C 2315 (59% VI - 33% CO - 8% LI)



CAT. C 2342 (68% CO - 32% LI)



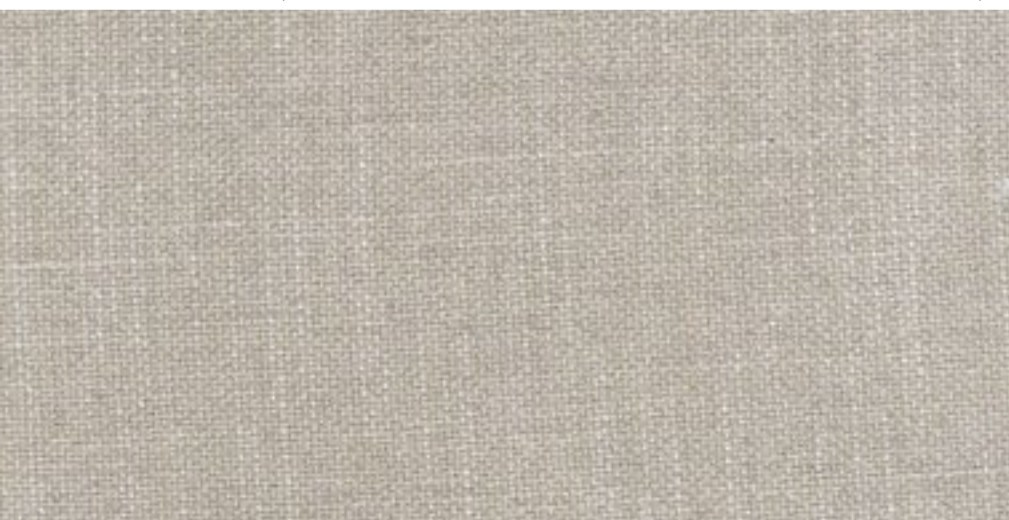
CAT. C 2317 (59% VI - 33% CO - 8% LI)



CAT. C 2344 (44% VI-16% PL-11% LI-10% WO-9% CO-6% PA-4%SE)



CAT. C 2339 (67% VI - 33% LI)



CAT. C 2345 ( 49% LI - 32% CO - 19% VI )

## BEIGE



CAT. C 2343 (44% VI-16% PL-11% LI-10% WO-9% CO-6% PA-4% SE)



CAT. C 2402 (100% POL)



CAT. D 5100 (52% LI - 48% VI )



CAT. D 5068 (46% CO - 45% VI - 9% LI)



CAT. D 5221 (75% VI - 14% CO - 11% LI )



CAT. D 5169 ( 64% VI - 15% PL - 11% CO - 10% LI )



CAT. D 5205 ( 87% CO - 13% VI )

## BEIGE



CAT. D 5071 ( 46% CO - 45% VI - 9% LI )



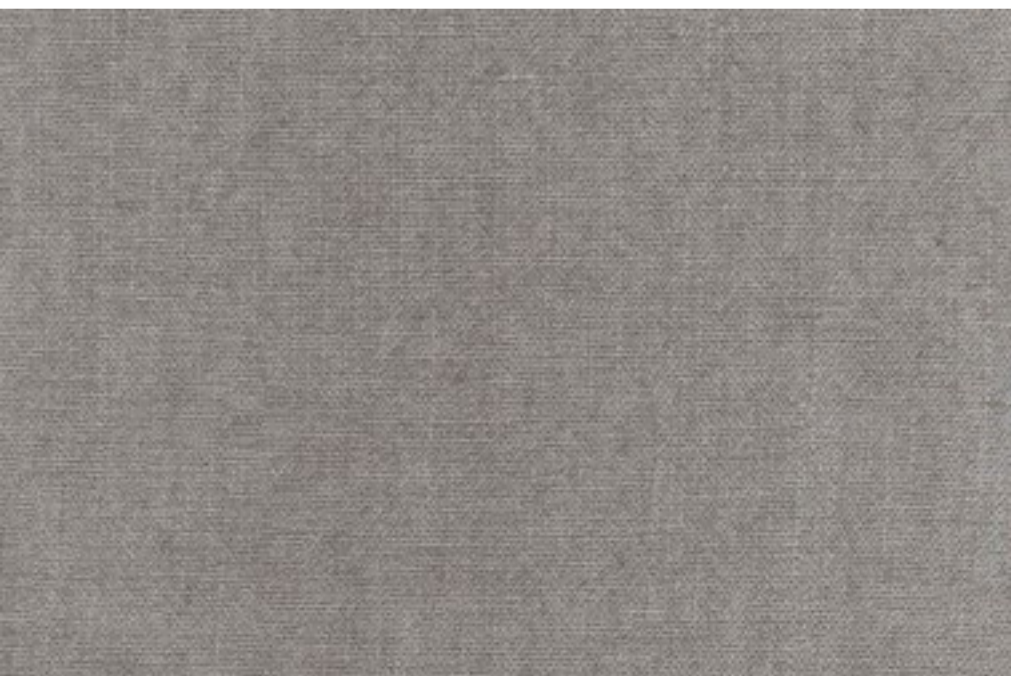
CAT. D 5170 ( 60% CO - 40% LI )



CAT. D 5222 ( 33% LI - 33% VI - 16% CO - 12% MD - 6% PL )



CAT. D 5101 ( 52% LI - 48% VI )



CAT. D 5117 ( 52% LI - 48% VI )



CAT. D 5172 ( 40% VI - 29% CO - 14% PC - 10% LI - 6% PL )

## CHOCOLATE



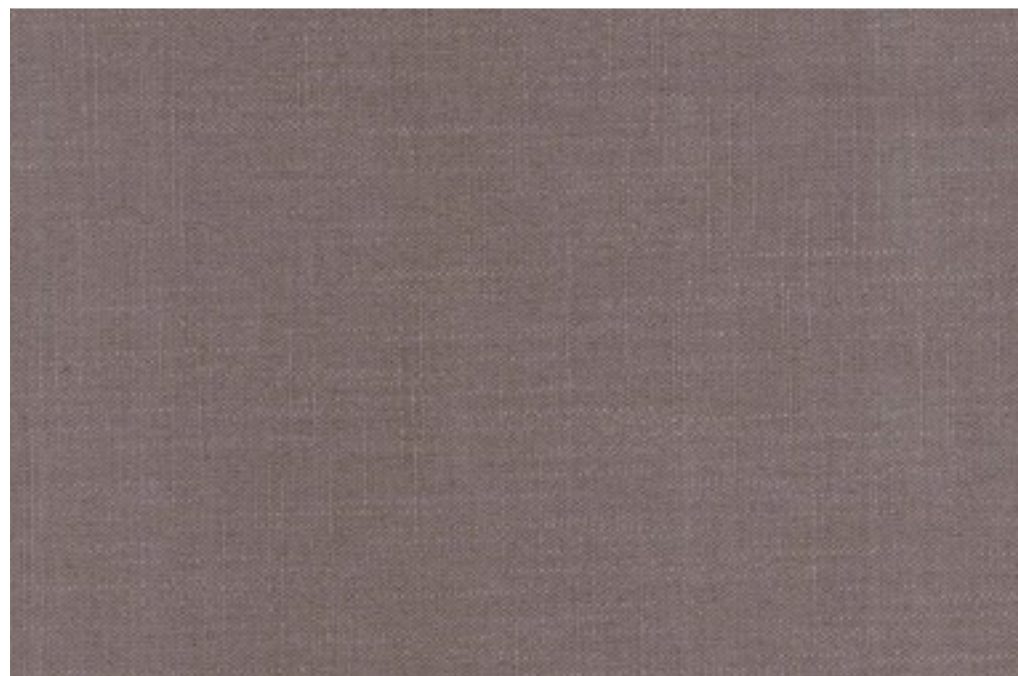
CAT. A 4017 ( 91% CO - 9% PL )



CAT. B 3162 ( 38% VI - 36% CO - 16% LI - 10 % PL )



CAT. B 3173 ( 90% CO - 10% PL )



CAT. B 3164 (72% VI - 28% LI )

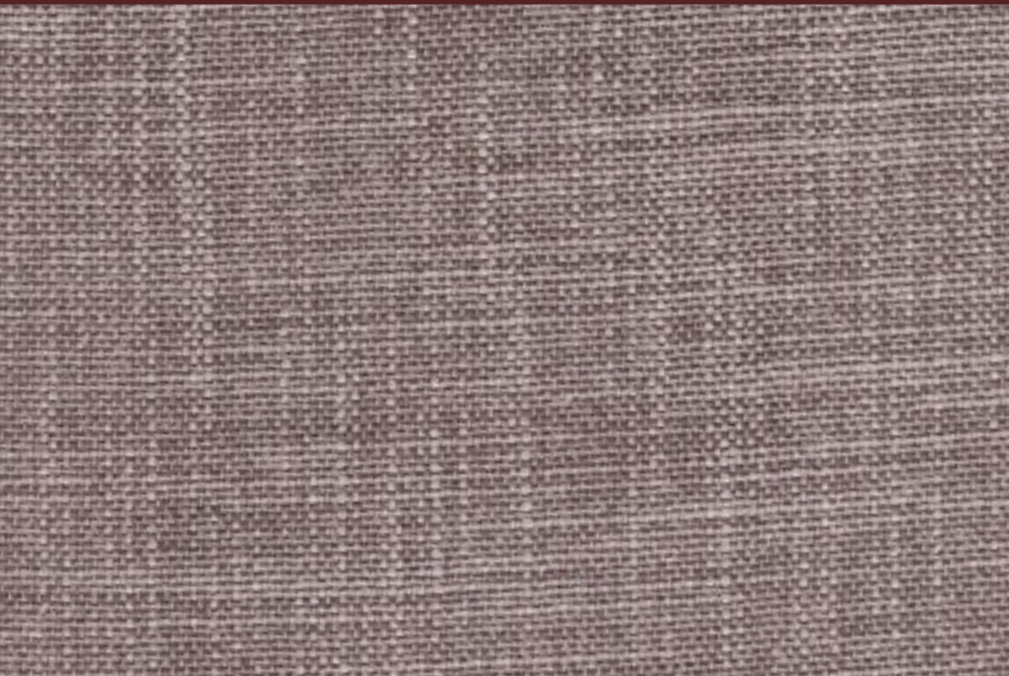


CAT. B 3166 ( 75% CO - 25% PL )

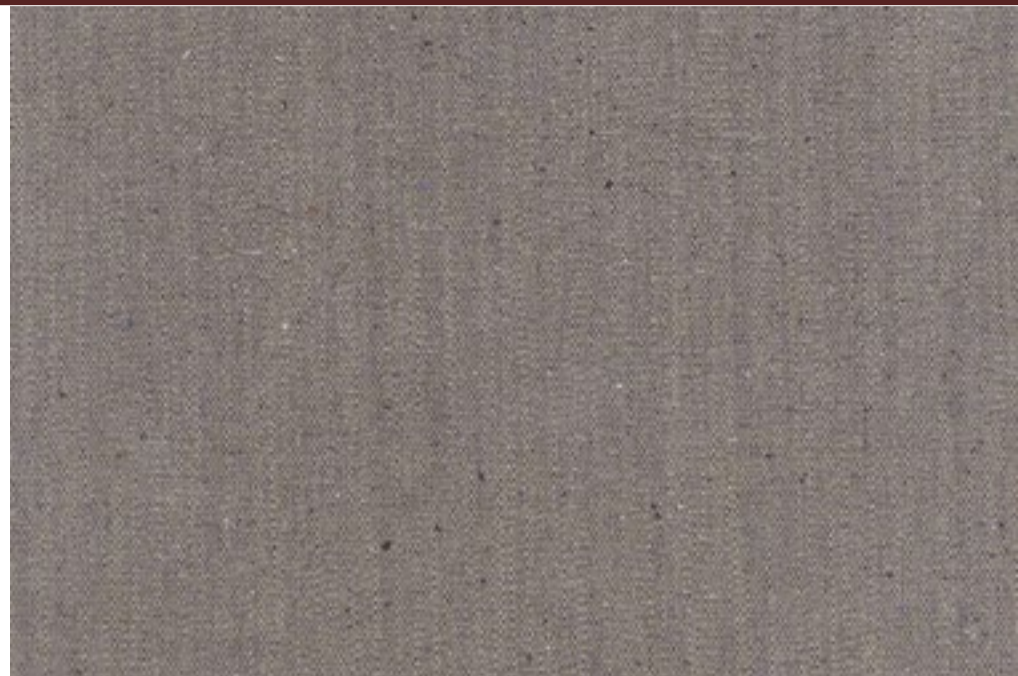


CAT. C 2387 (85% PES - 15% CO )

## CHOCOLATE



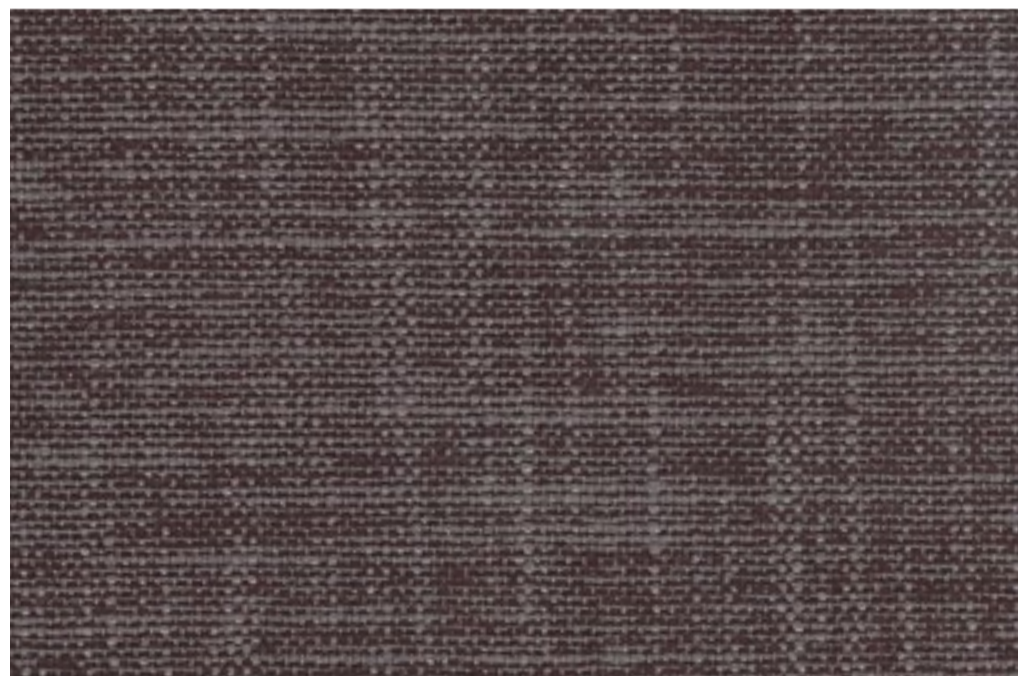
CAT. C 2319 ( 59% VI - 33% CO - 8% LI )



CAT. C 2346 (44% VI-16% PL-11% LI-10% WO-9% CO-6%PA-4%SE)



CAT. C 2347 ( 68% CO - 32% LI )



CAT. C 2320 ( 59% VI - 33% CO - 8% LI )



CAT. D 5196 ( 30% VI - 20% PL - 20% AC - 15% CO - 15% LI )



CAT. D 5181 ( 60% CO - 40% LI )

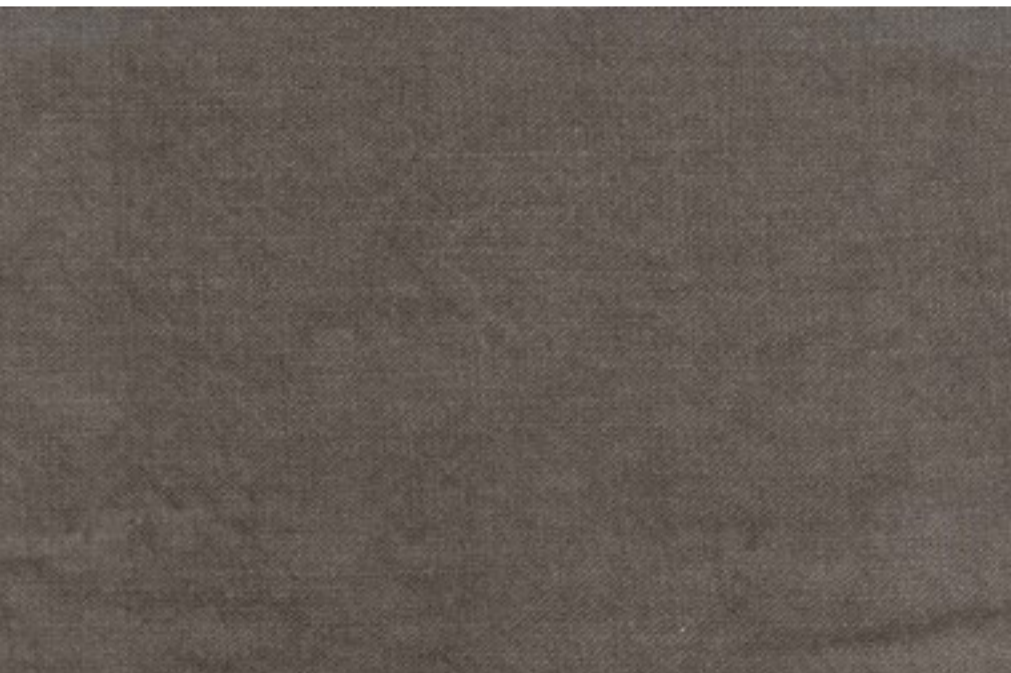
## CHOCOLATE



CAT. D 5223 ( 70% VI - 30% LI )



CAT. D 5199 ( 39% LI - 27% JU - 24% VI - 10% CO )



CAT. D 5102 ( 52% LI - 48% VI )



CAT. D 5198 ( 39% LI - 27% JU - 24% VI - 10% CO )

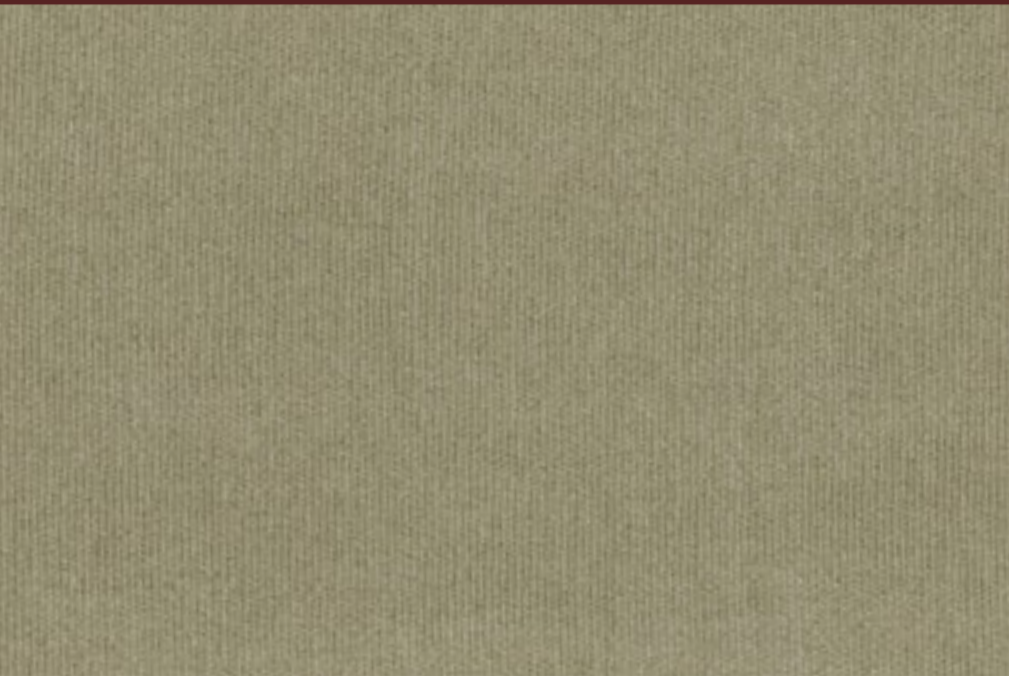


CAT. D 5174 ( 60% LI - 40% CO )

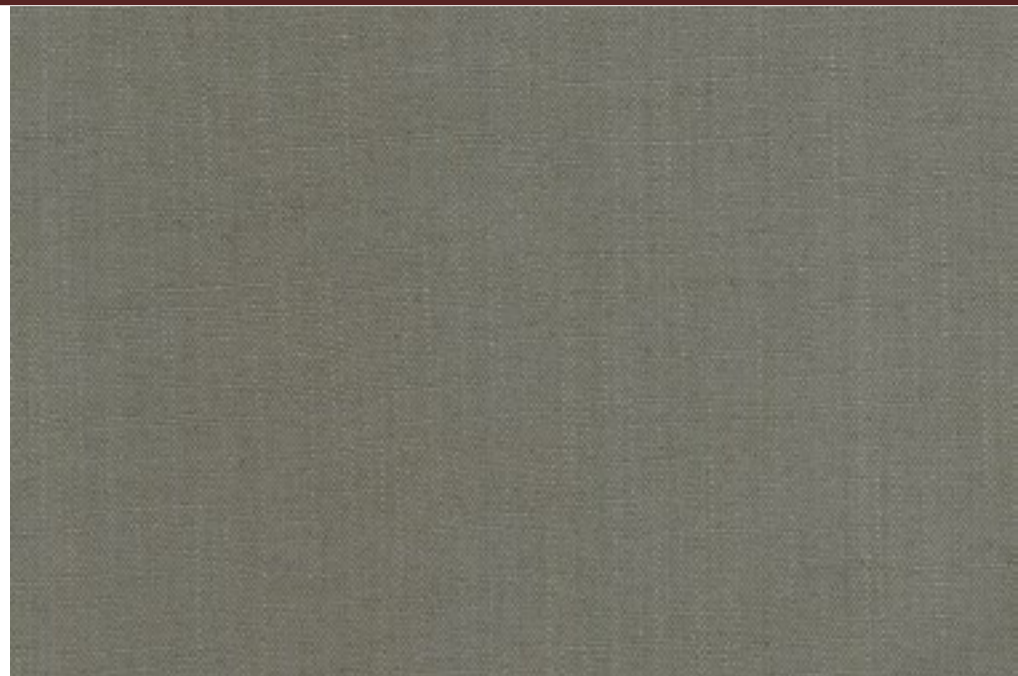


CAT. D 5224 ( 33% LI - 33% VI - 16% CO - 12% MD - 6% PL )

## GREEN



CAT. B 3180 ( 71% CO - 21% PL - 8% PC )



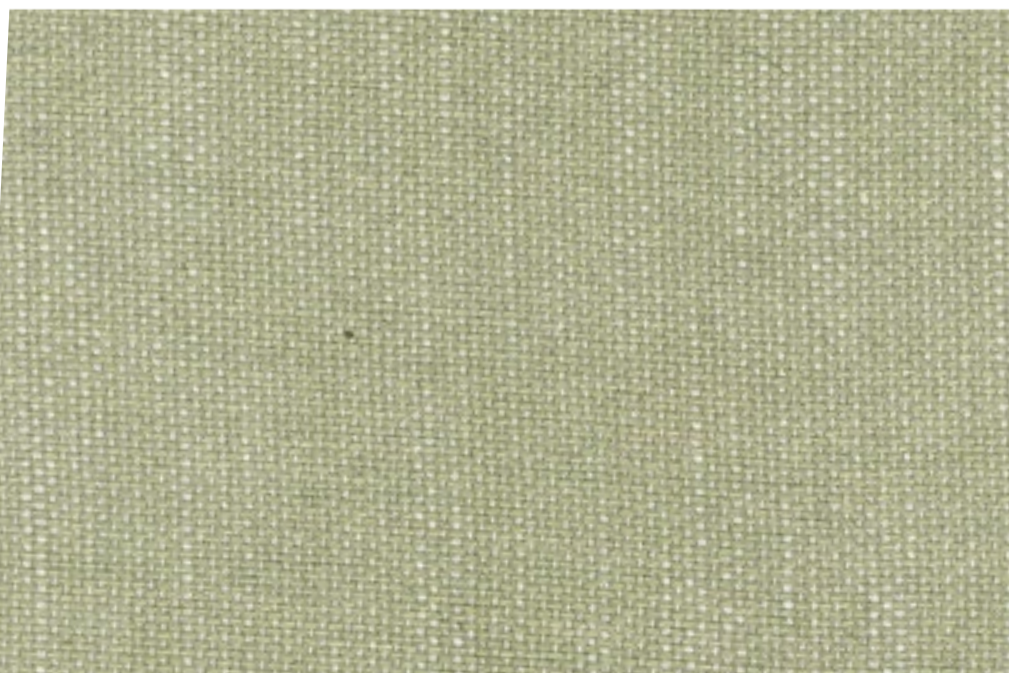
CAT. B 3170 (72% VI - 28% LI)



CAT. B 3167 (54% VI - 24% CO - 22% LI )



CAT. C 2348 (49% LI - 32% CO - 19% VI )



CAT. C 2349 ( 49% LI - 32% CO - 19% VI )



CAT. C 2362 ( 67% VI - 33% LI )

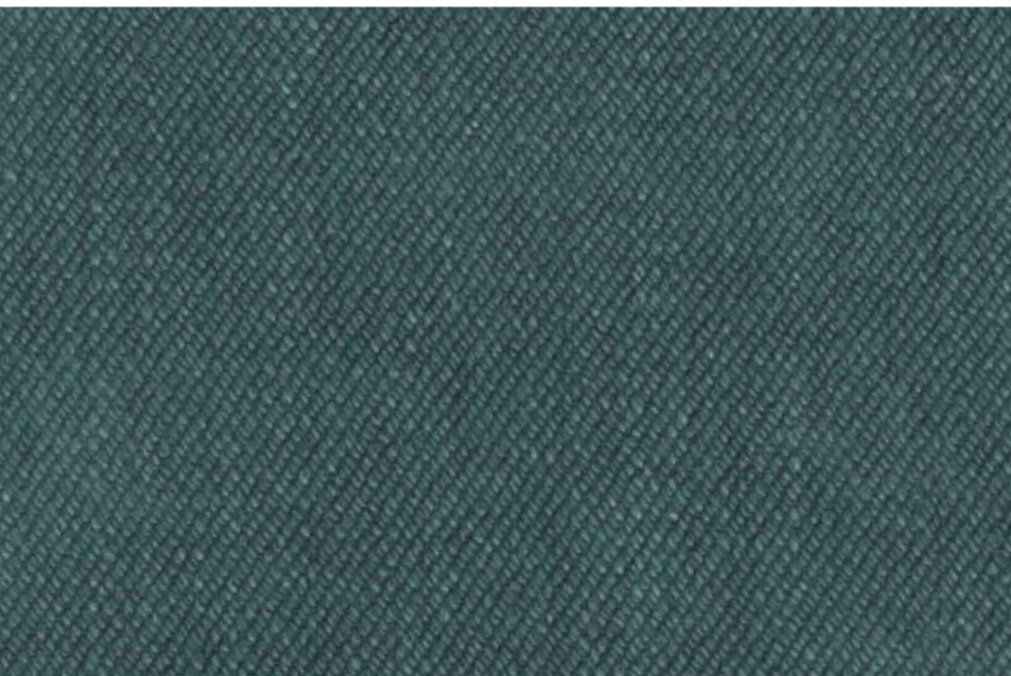
## GREEN



CAT. D 5226 ( 100% LI )



CAT. D 5225 ( 100% LI )



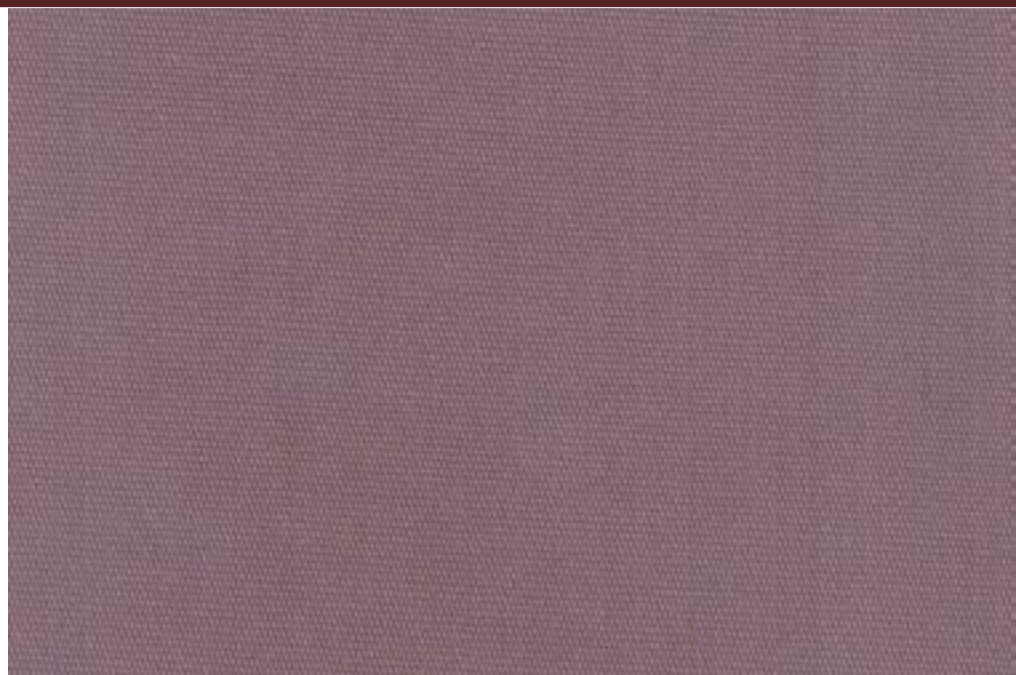
CAT. D 5178 ( 60% LI - 40% CO )



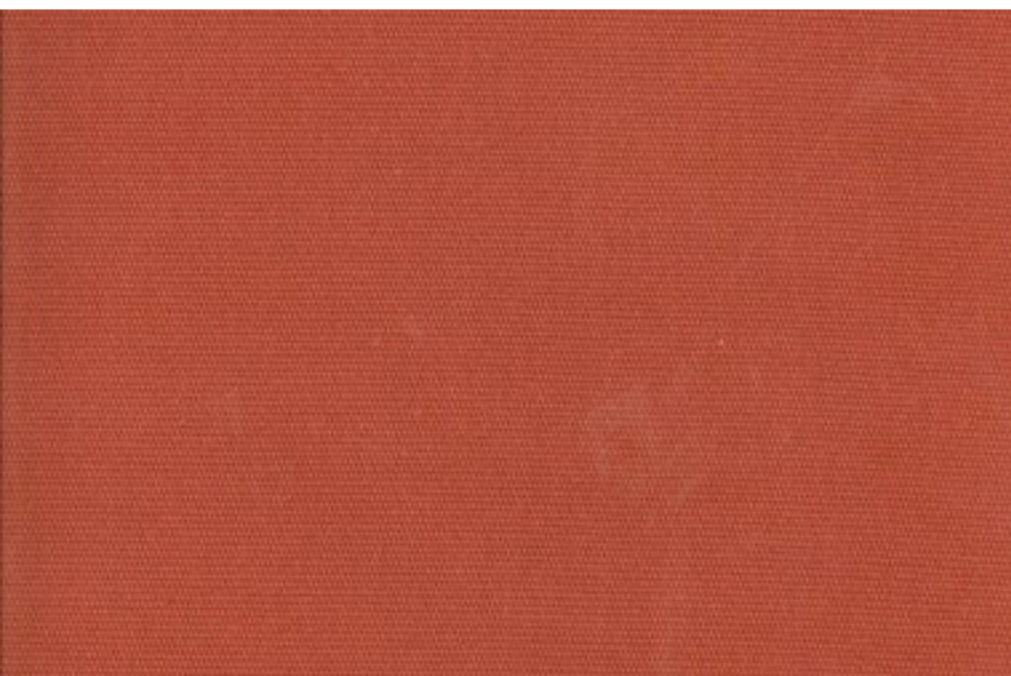
## COLOURS



CAT. A 4025 ( 91% CO - 9% PL )



CAT. A 4024 ( 91% CO - 9% PL )



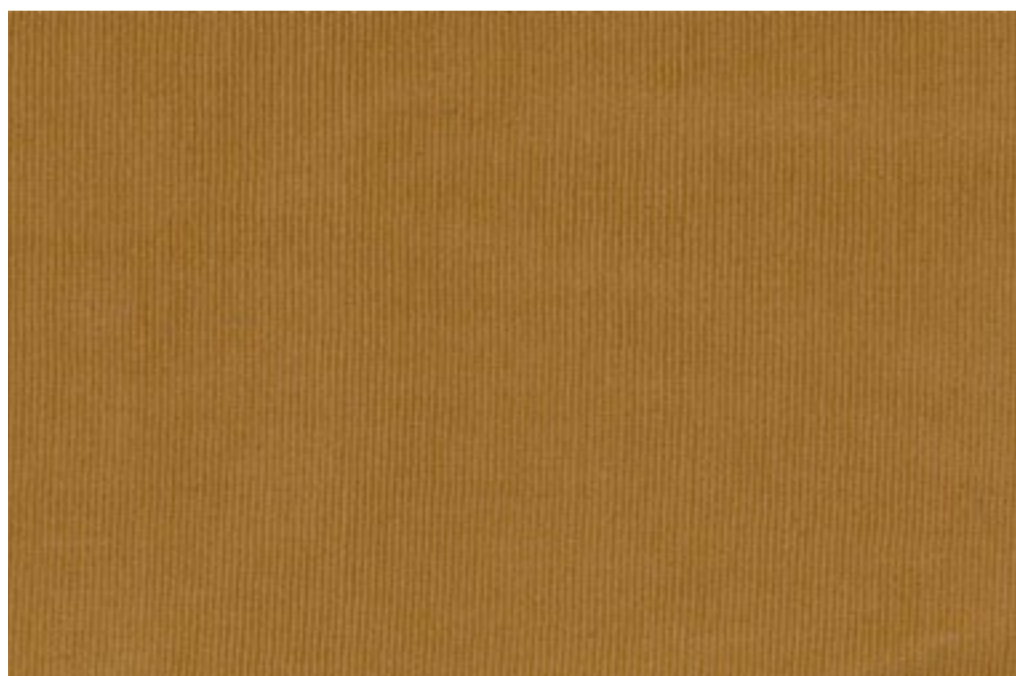
CAT. A 4023 ( 91% CO - 9% PL )



CAT. B 3183 ( 71% CO - 21% PL - 8% PC )



CAT. B 3185 ( 71% CO - 21% PL - 8% PC )



CAT. B 3184 ( 71% CO - 21% PL - 8% PC )

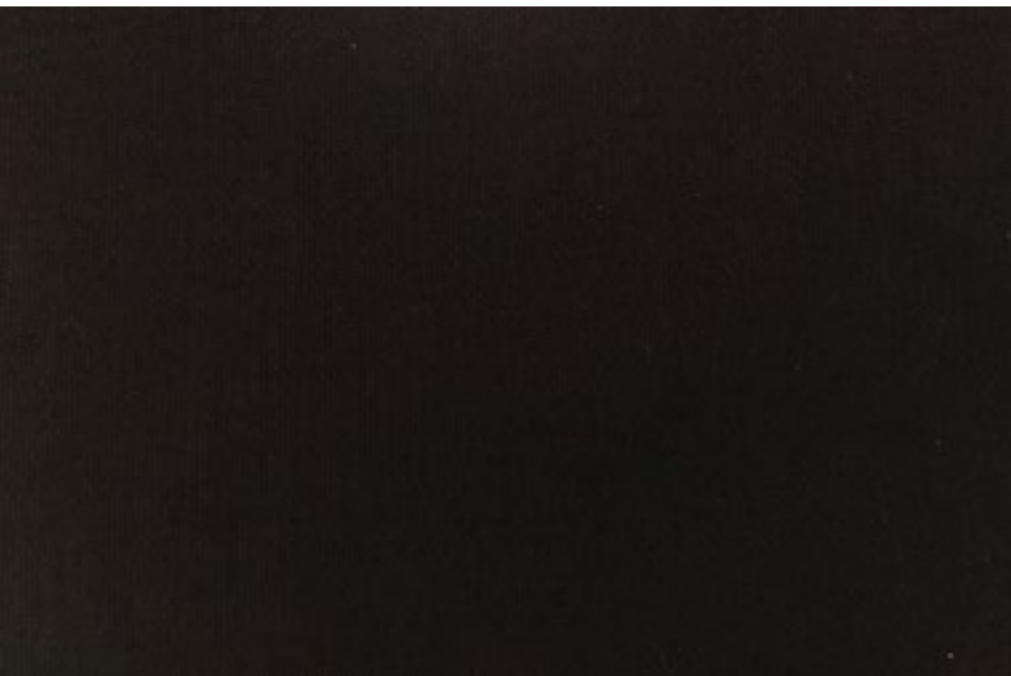
## COLOURS



CAT. B 3080 ( 71% CO - 21% PL - 8% PC )



CAT. B 3182 ( 71% CO - 21% PL - 8% PC )



CAT. B 3083 ( 71% CO - 21% PL - 8% PC )



CAT. C 2363 ( 67% VI - 33% LI )

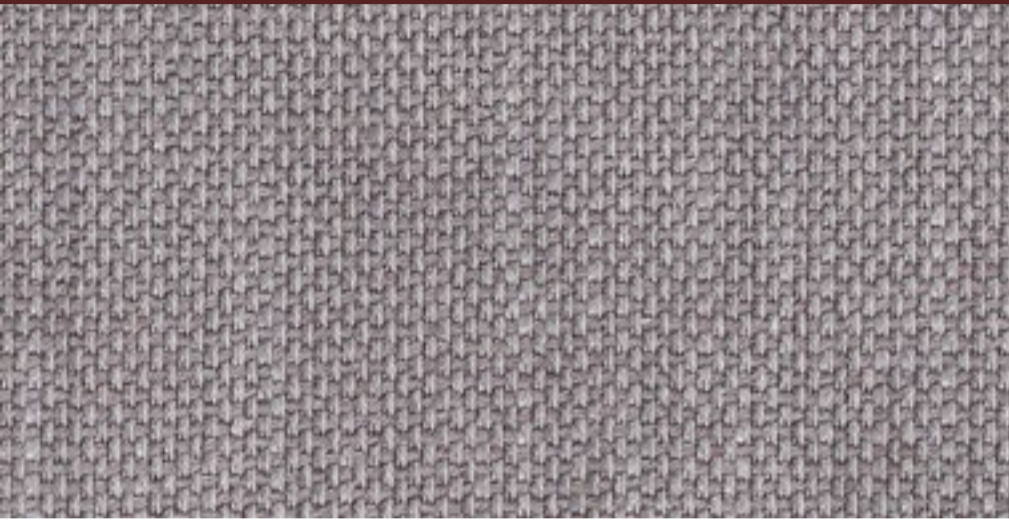


CAT. C 2361 ( 68% CO - 32% LI )



CAT. D 5167 ( 60% LI - 40% CO )

## PELTROX



CAT. A 4016 ( 47% VI - 35% PL - 18% CO )



CAT. A 4012 ( 100% PL )



CAT. B 3171 ( 54% VI - 24% CO - 22% LI )



CAT. C 2388 ( 85% PES - 15% CO )



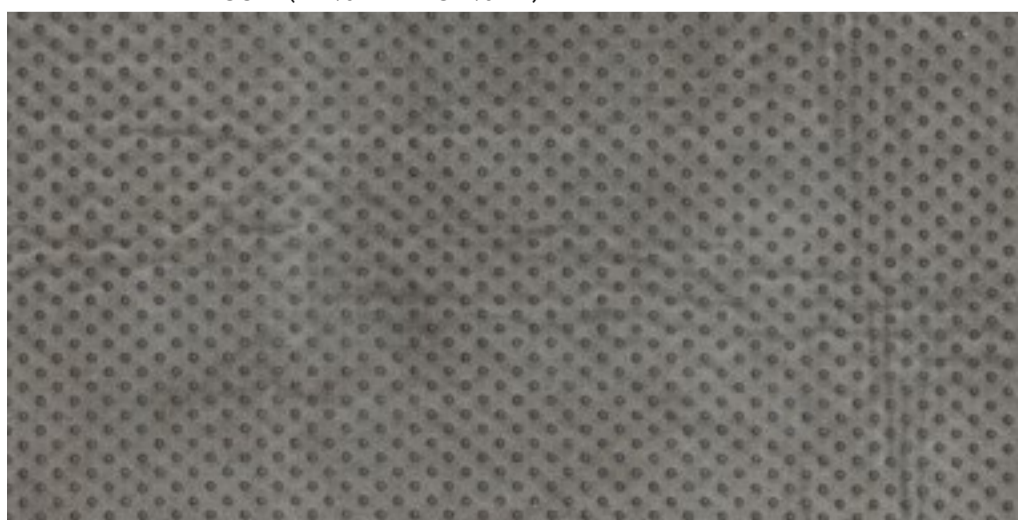
CAT. C 2274 ( 38% PC - 36% VI - 15% CO - 9% LI - 2% AF )



CAT. C 2352 ( 68% CO - 32% LI )



CAT. C 2350 ( 44%VI-16%PL-11%LI-10%WO-9%CO-6%PA-4%SE )

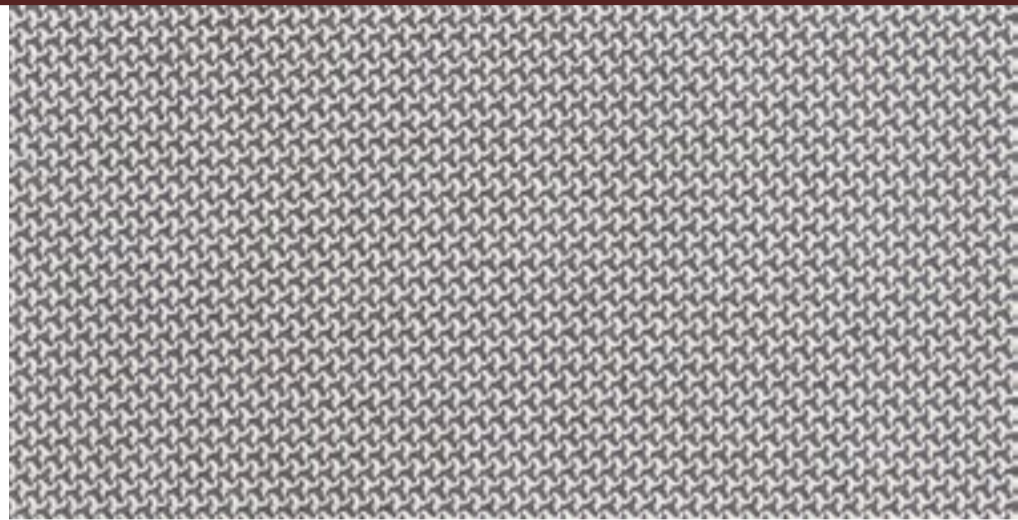


CAT. C 2403 ( 100% POL )

## PELTROX



CAT. D 5103 ( 52% LI - 48% VI )



CAT. D 5189 ( 46% VI - 24% PL - 30% CO )



CAT. D 5203 ( 39% LI - 27% JU - 24% VI - 10% CO )



CAT. D 5193 ( 30% VI - 20% PL - 20% AC - 15%CO - 15% LI )



CAT. D 5072 ( 46% CO - 45%VI 9% LI )



CAT. D 5180 ( 54% JU - 46% LI )

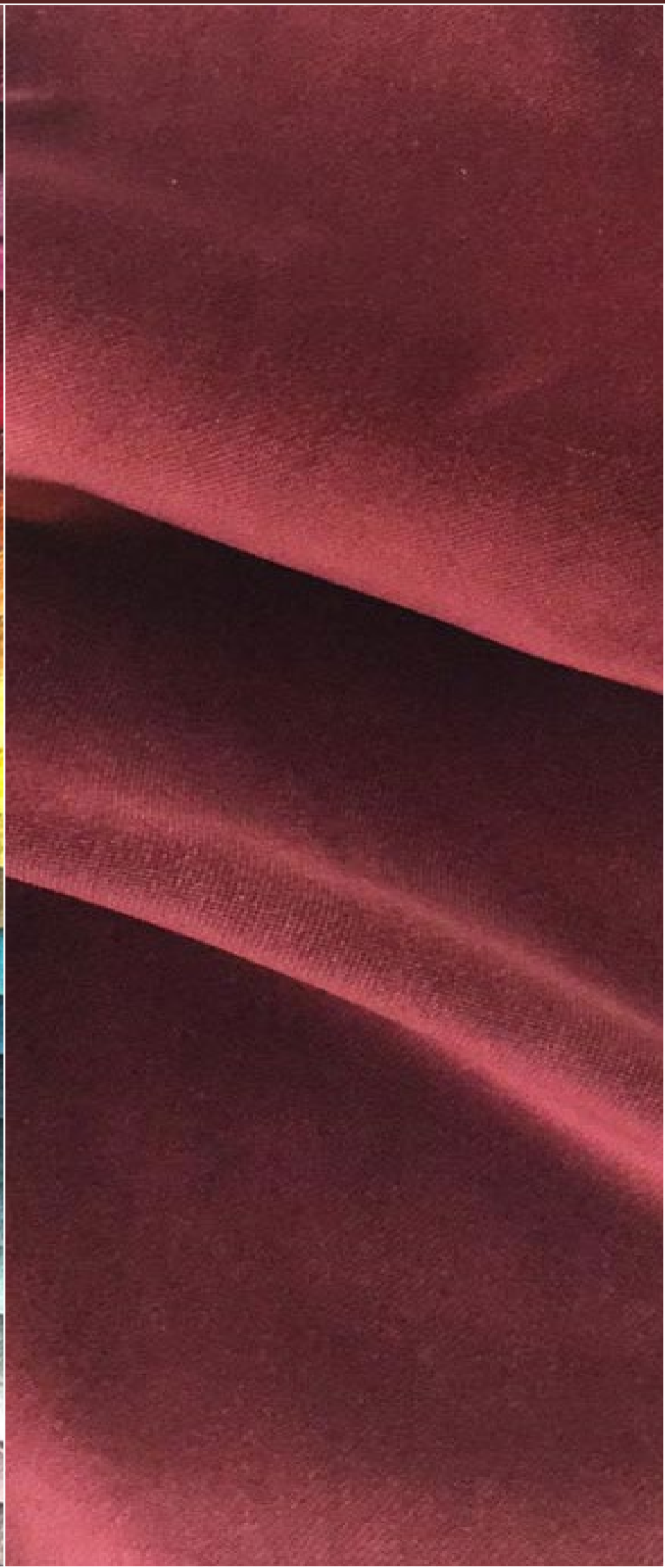


CAT. D 5182 ( 60% LI - 40% CO )



CAT. D 5200 ( 39% LI - 27% JU - 24% VI - 10% CO )

VELLUTI | VELVETS



## VELVET



CAT. C 2383 ( 100% PL )



CAT. C 2397 ( 100% PL )



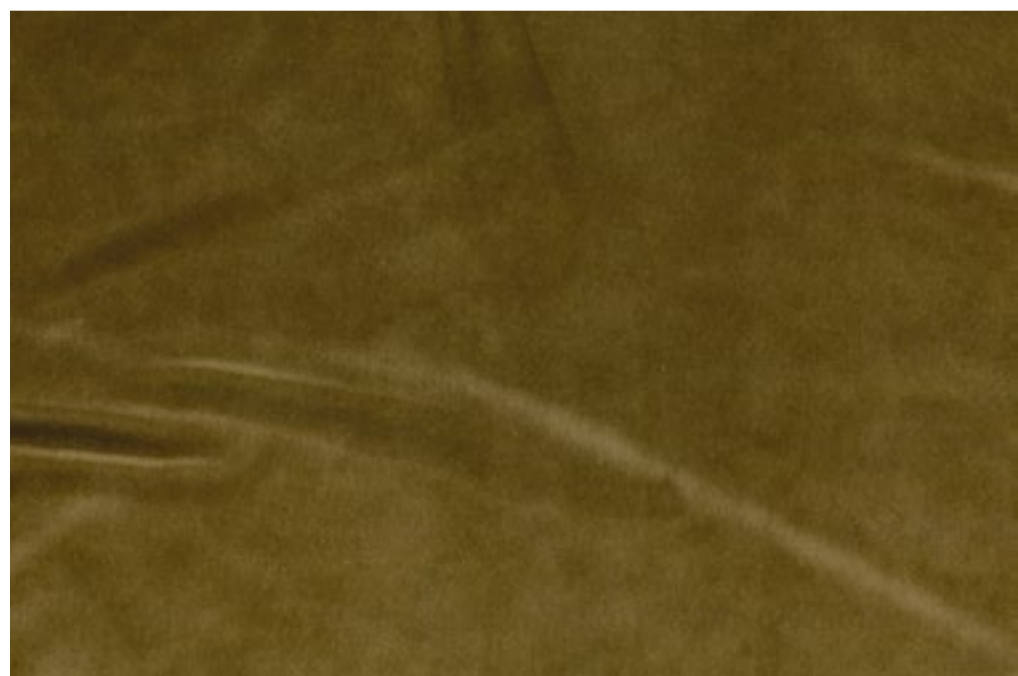
CAT. C 2401 ( 100% PL )



CAT. C 2399 ( 100% PL )



CAT. C 2398 ( 100% PL )



CAT. C 2400 ( 100% PL )

## VELVET



CAT. C 2369 ( 100% PL )



CAT. D 5106 ( 100% CO )



CAT. C 2370 ( 100% PL )

MATERIALI  
MATERIALS

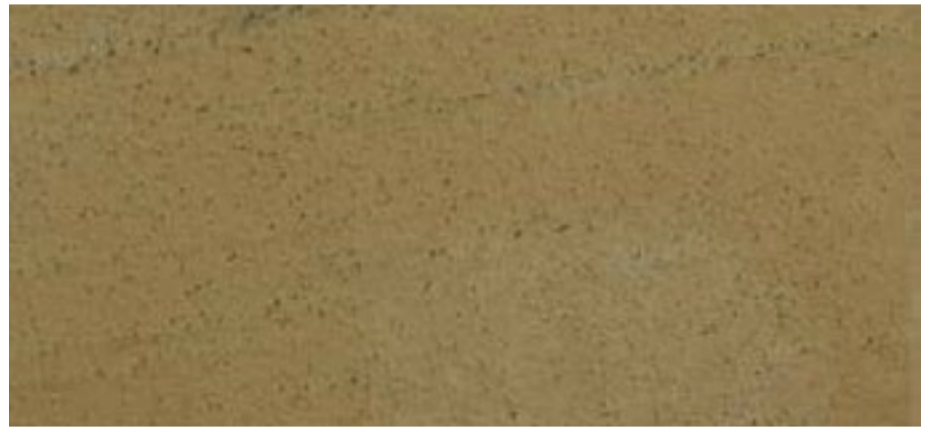




## LACCATURE PER LEGNO / WOOD LACQUERS TERRA DI GALESTRO



TG 01 CORRAL SAND



TG 02 CLAY



TG 03 MARRON GLACE'



TG 04 SAHARA

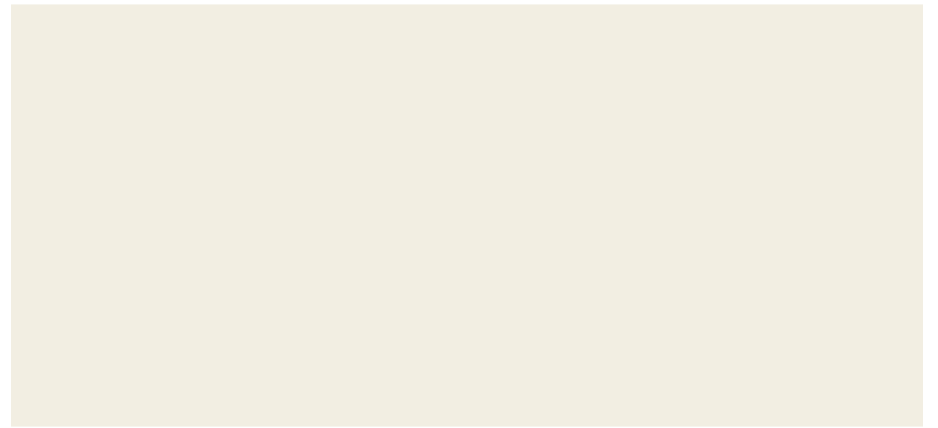


TG 05 LAVA GREY

## LACCATURE PER LEGNO WOOD LACQUERS



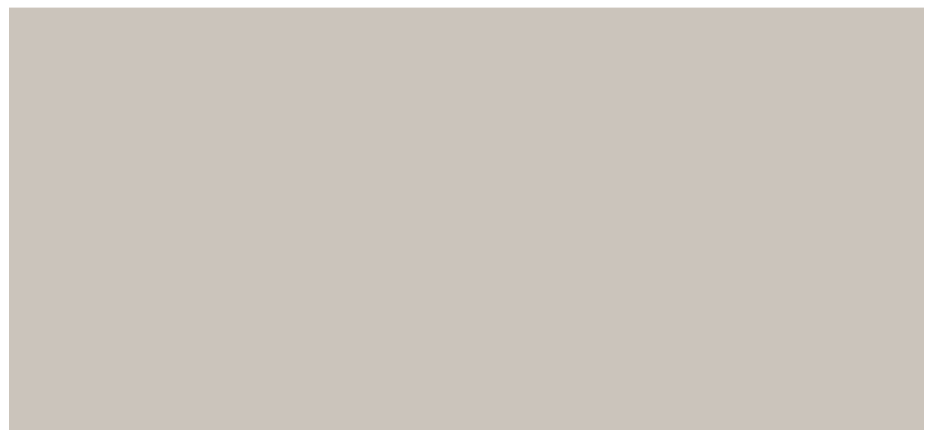
RAL 9016 bianco\_white



04.84 crema\_cream



15.65 sabbia\_sand



05.70 tortora\_dove brown



10.60 corda\_roppe



05.60 grigio caldo\_warm grey

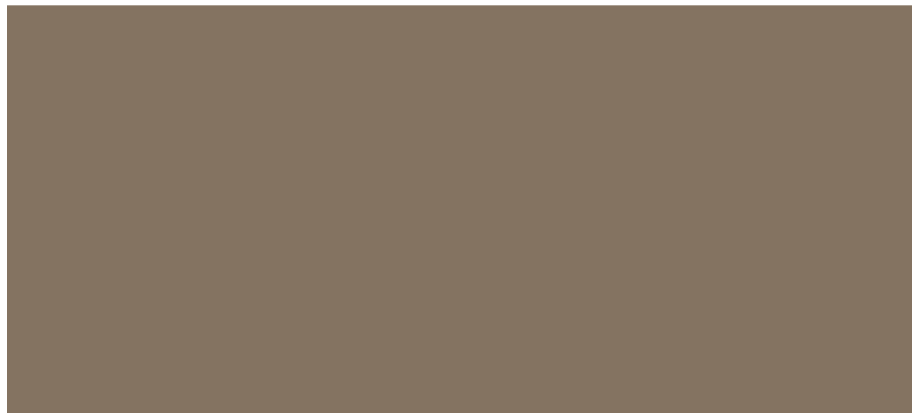
## LACCATURE PER LEGNO WOOD LACQUERS



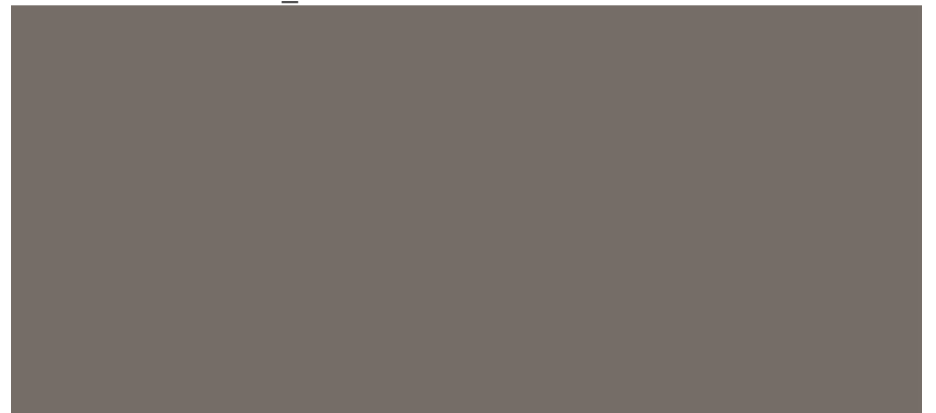
D 075.60.20 kaki



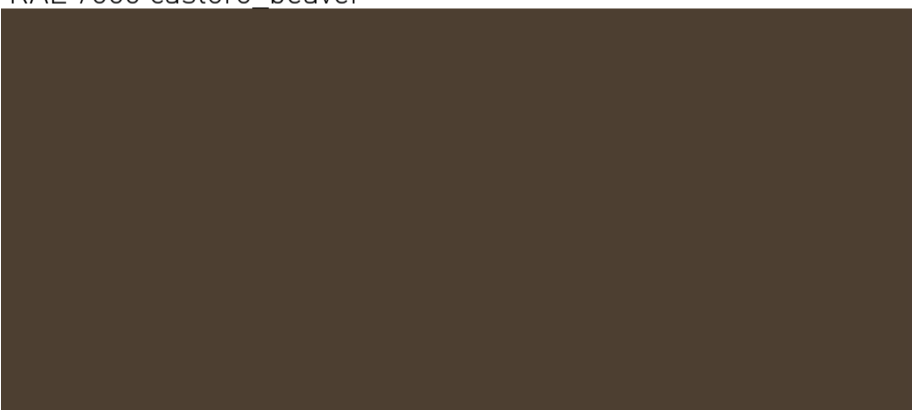
D 070.60.30 deserto\_desert



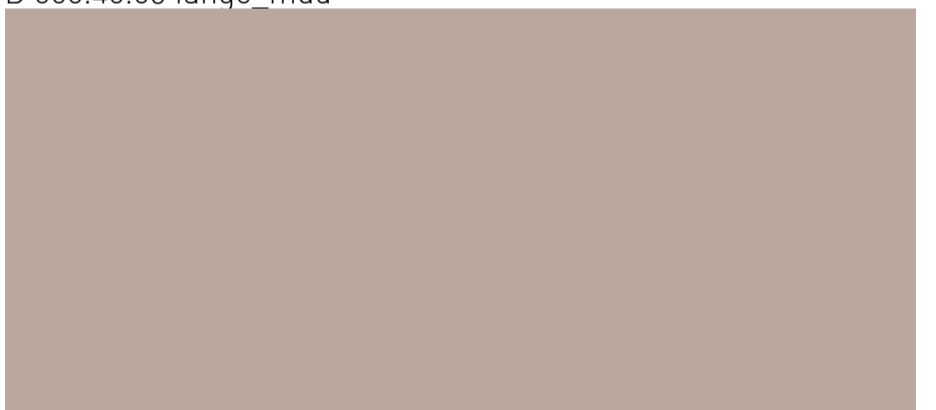
RAL 7006 castoro\_bever



D 060.40.05 fango\_mud



D 060.30.10 cioccolato\_chocolate



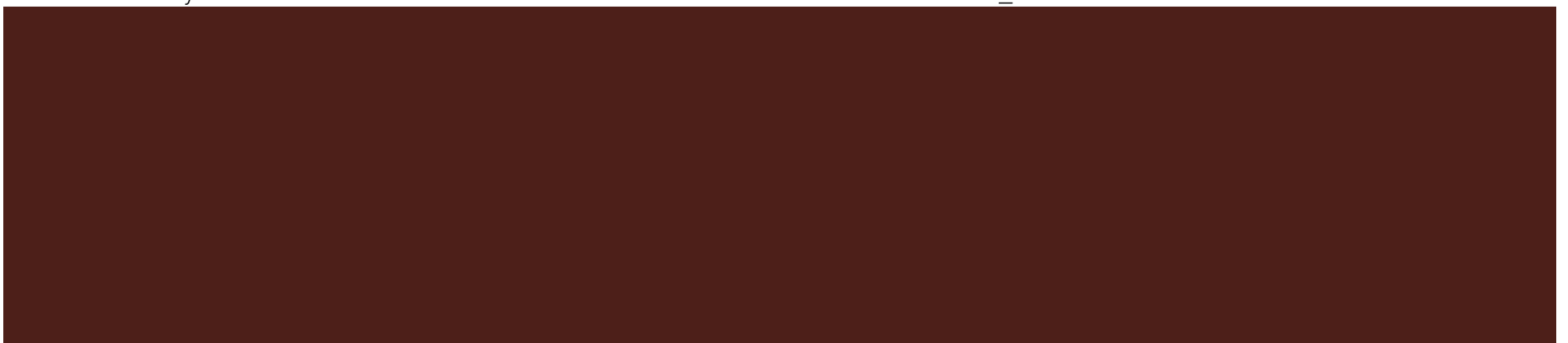
D 050.70.10 cipria\_powder



D 050.60.20 rosybrown



40.20 rosso scuro\_dark red

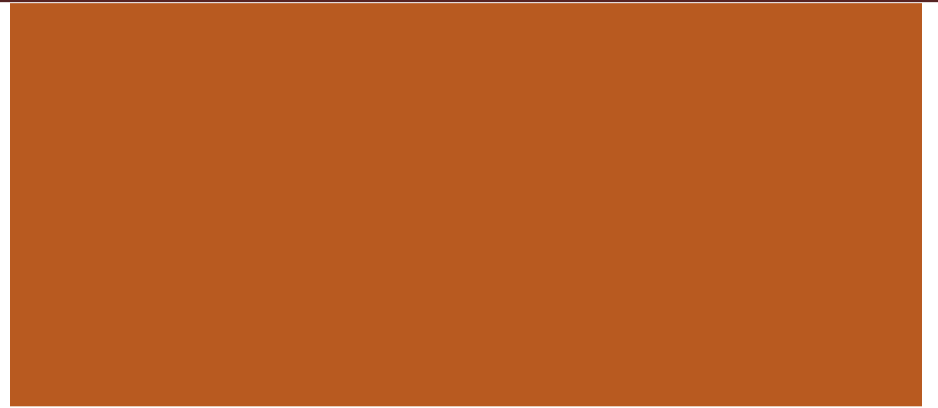


RAL 3007 amaranto\_amaranth

## LACCATURE PER LEGNO WOOD LACQUERS



D 080.60.30 senape\_mustard



50.40 aragosta\_lobster



D 220.60.10 winter blue



D 200.40.10 alzavola\_teal



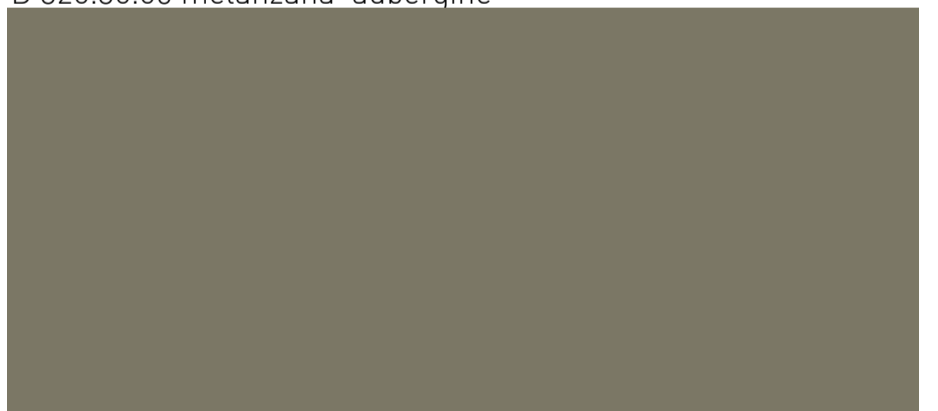
D 260.40.10 lavanda\_lavender



D 320.30.05 melanzana\_aubergine



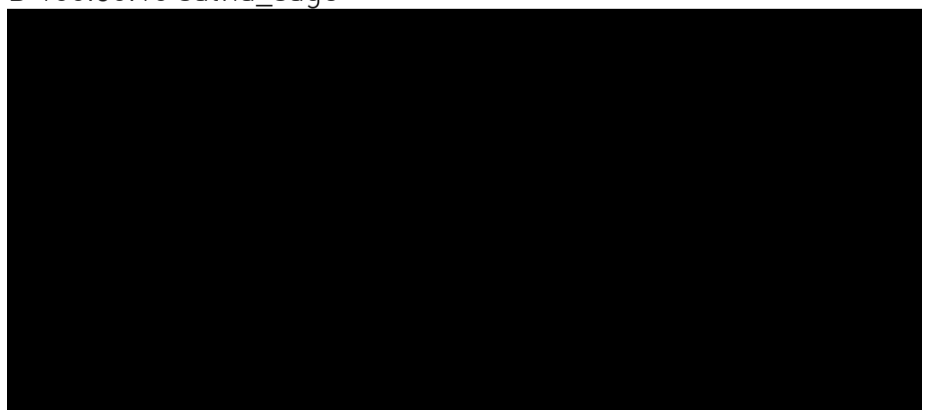
20.50 verde\_green



D 100.50.10 salvia\_sage



D 100.60.05 grigio\_grey



RAL 9005 nero\_black

# LACCATURE PER LEGNO WOOD LACQUERS



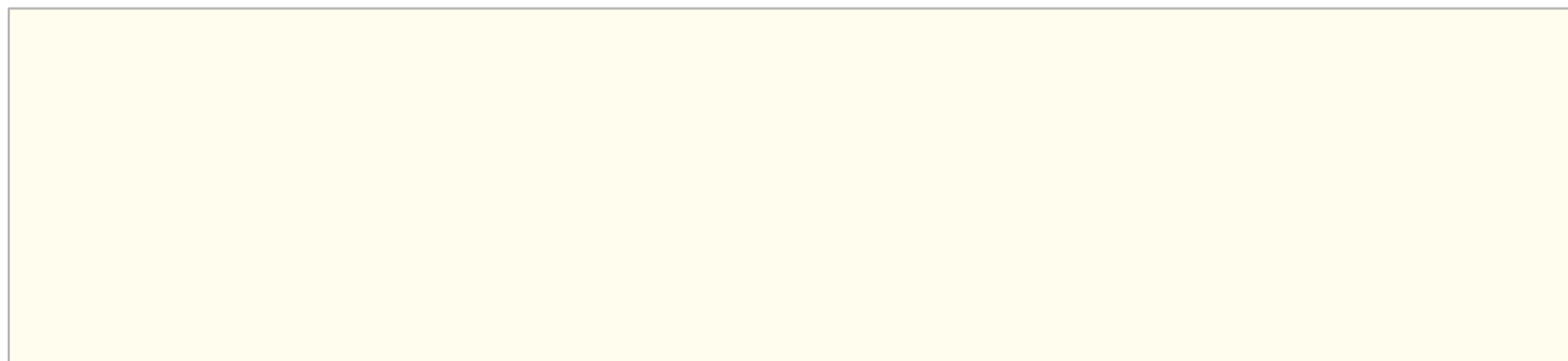
Spatolato cemento | spatulated concrete



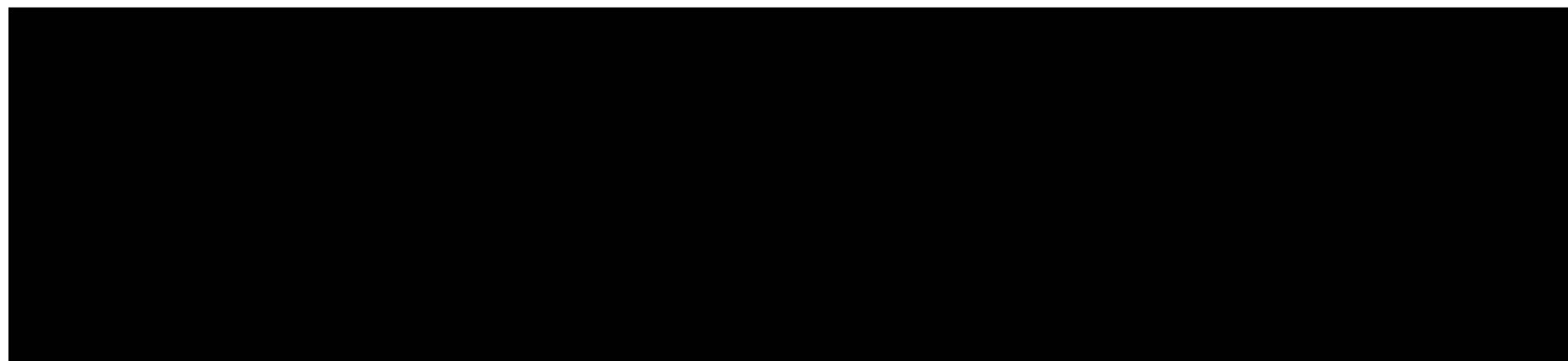
Cemento: Impasto di cemento spatolato sulla superficie in spessore sottile di circa 1 mm. La spalmatura avviene manualmente e ciò consente la creazione di imperfezioni casuali che rendono il prodotto unico. La protezione finale della superficie a base acqua conferisce al prodotto un'ottima resistenza alle macchie rispettando la naturale opacità del cemento.

Concrete: Mixture of spatulated concrete on surface, approx. 1 mm thick. The hand-made spreading allows casual imperfections which makes the product unique itself. The water-base protection on top gives an excellent stain-proof finish, keeping the concrete naturally matt.

## LAMINATO LIQUIDO | LIQUID LAMINATE



laminato liquido bianco | white liquid laminate



laminato liquido nero | black liquid laminate



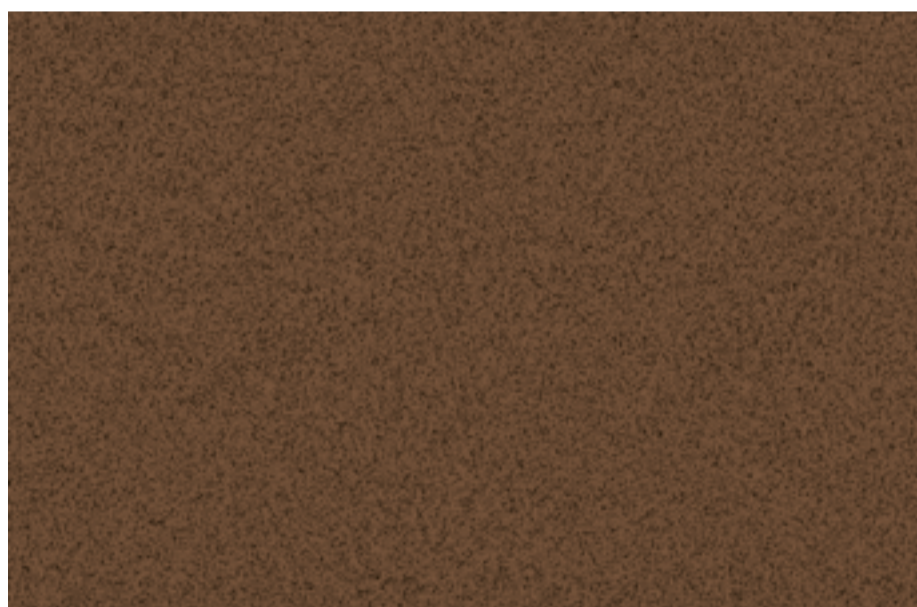
Il "laminato liquido" è una vernice con caratteristiche particolari di resistenza al graffio e idrorepellente. Il prodotto è stato studiato e formulato con l'utilizzo di resine particolari e microsferi omogenee selezionate di alta durezza.

"Liquid laminate paint" is a special paint with scratch-proof characteristics. The product was conceived and formulated with the use of special resins and very hard selected, homogeneous microspheres.

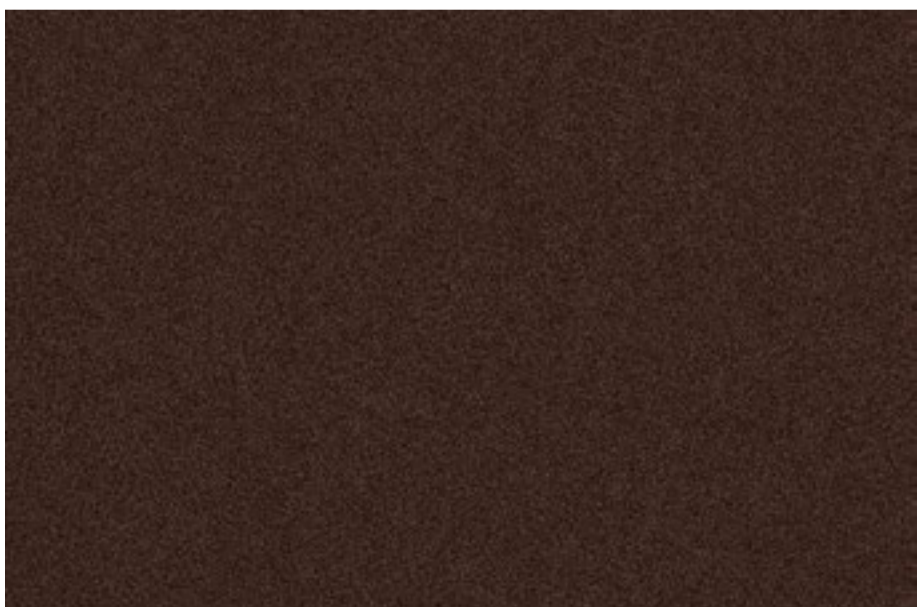
## LACCATURE PER METALLO STEEL LACQUERS



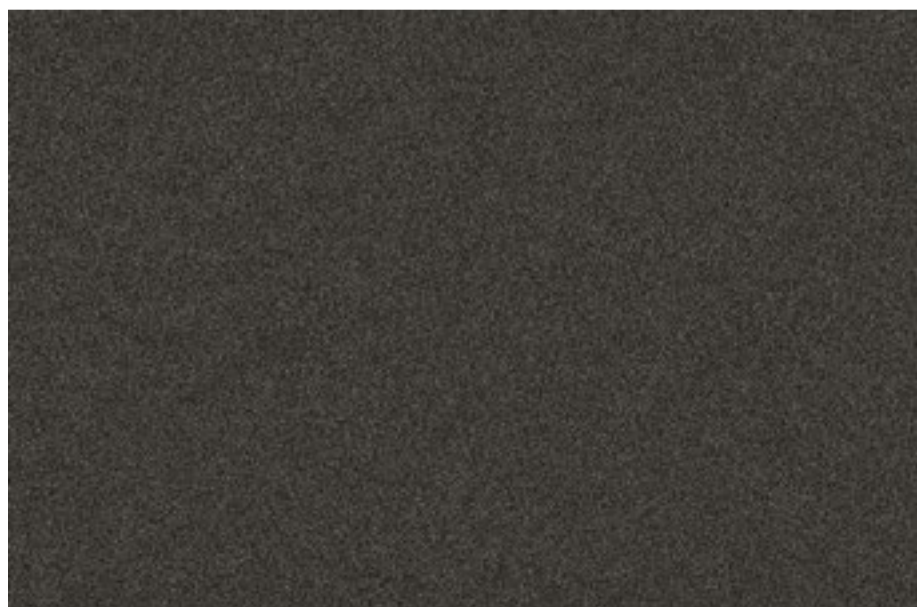
Alluminio gofrato\_embossed aluminium



3100 Golden bronze

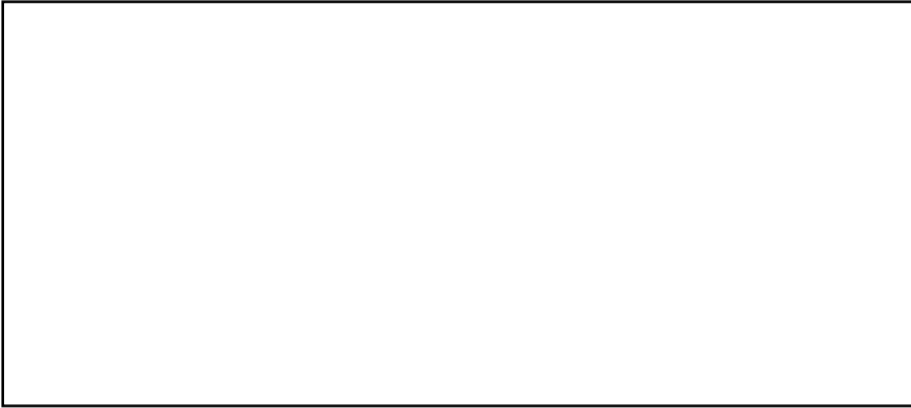


4820 ruggine perlato\_rusty pearl

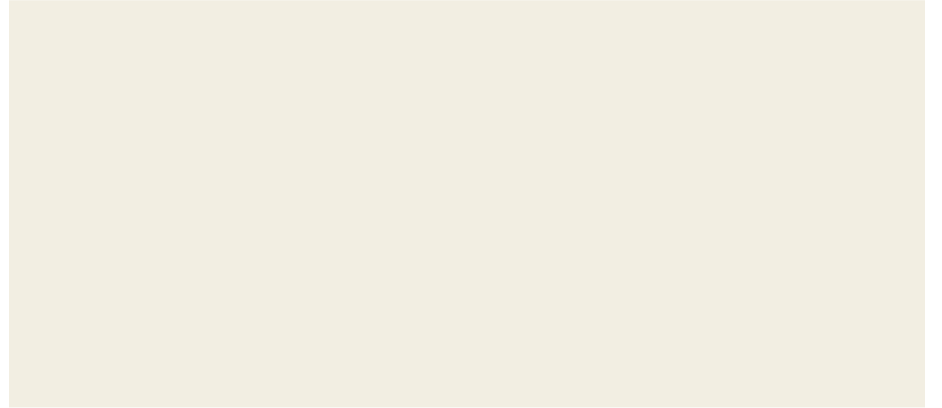


320 nero perlato\_black pearl

## LACCATURE PER METALLO STEEL LACQUERS



RAL 9016 bianco\_white



RAL 1013 crema\_cream



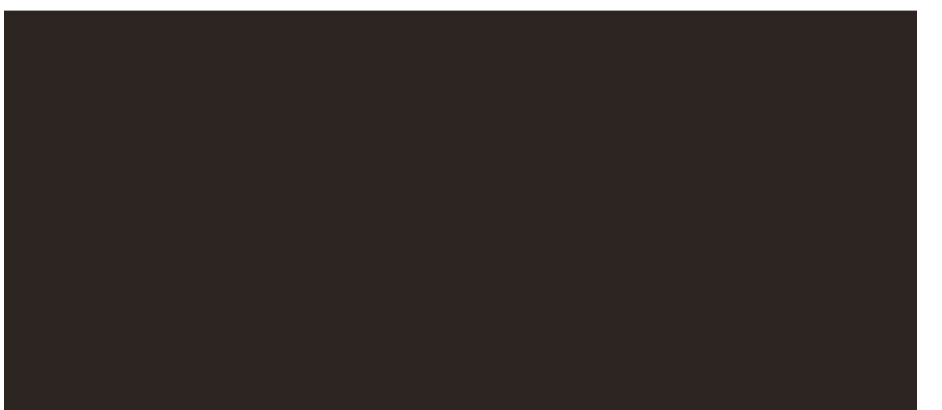
RAL 3003 rosso rubino\_ruby red



RAL 3004 rosso scuro\_dark red



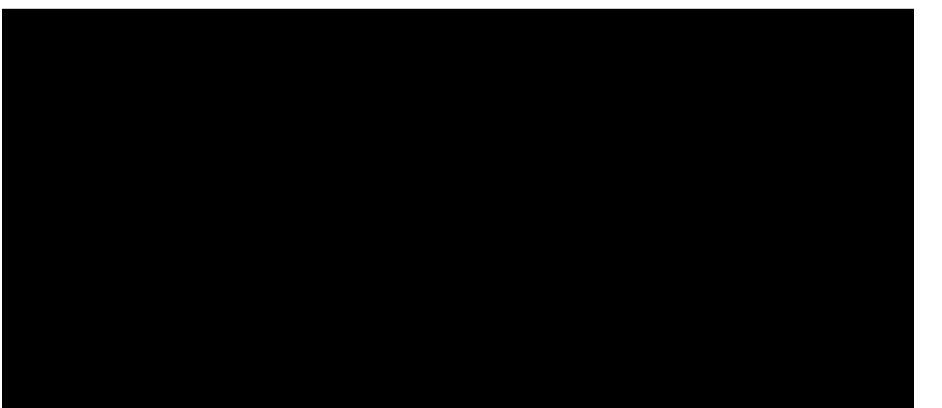
RAL 7006 castoro\_beaver



RAL 8019 testa di moro opaco\_matt dark brown



Alluminio cromo\_alu-chrome



RAL 9005 nero\_black

LACCATURE PER METALLO  
STEEL LACQUERS



Champagne



Ambr / Amber



laccatura Peltrox\_Peltrox lacquered



Bronzo\_bronze



FINITURE PER METALLO  
STEEL FINISHES



Finitura Cromo | Chrome finish



Finitura Nickel nero | Black Nickel finish



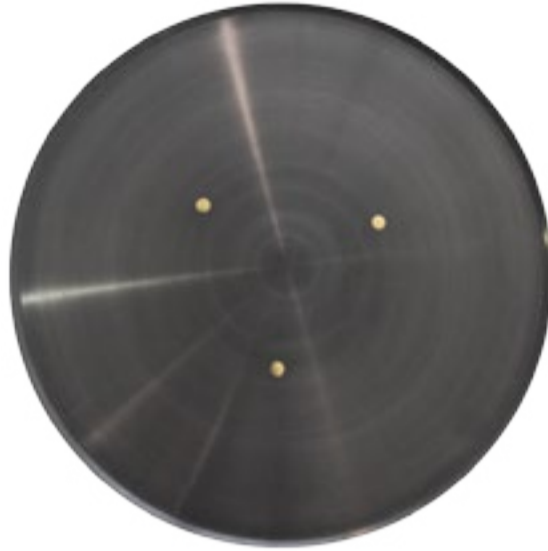
Finitura Peltrox | Peltrox finish

T-GONG : finiture

T-GONG : finishes



Bronzo\_Bronze



Peltrox



Rame\_Copper

DIESYS : finiture

DIESYS : finishes



Finitura acciaio spazzolato  
Brushed steel finish



Acciaio inox finitura ambra satin  
Stainless steel "Satin Amber" finish

## MARMI & PIETRE MARBLES & STONES



La pietra acrilica è un materiale composito di alto pregio, duraturo e resistente, non assorbente e non poroso. Ecologico, assolutamente impermeabile, non cambia colore nel tempo. È igienico perchè non poroso.

Acrylic stone of high quality, durability and resistance, as well as non absorbent and non porous. Ecological and absolutely water proof. Colour doesn't change over time. Hygienic because it's not porous.

La pietra serena è una pietra arenaria di colore grigio particolarmente utilizzata nell'architettura e in parte anche nella scultura. È tipica dell'architettura toscana, ed in particolare di Firenze, Toscana.

Serena stone is a grey stone used extensively during Renaissance for architectural details, interior pilasters, entablatures and architectural elements, particularly in Florence, Tuscany.



Pietra Serena | Serena stone



Pietra acrilica | Acrylic stone

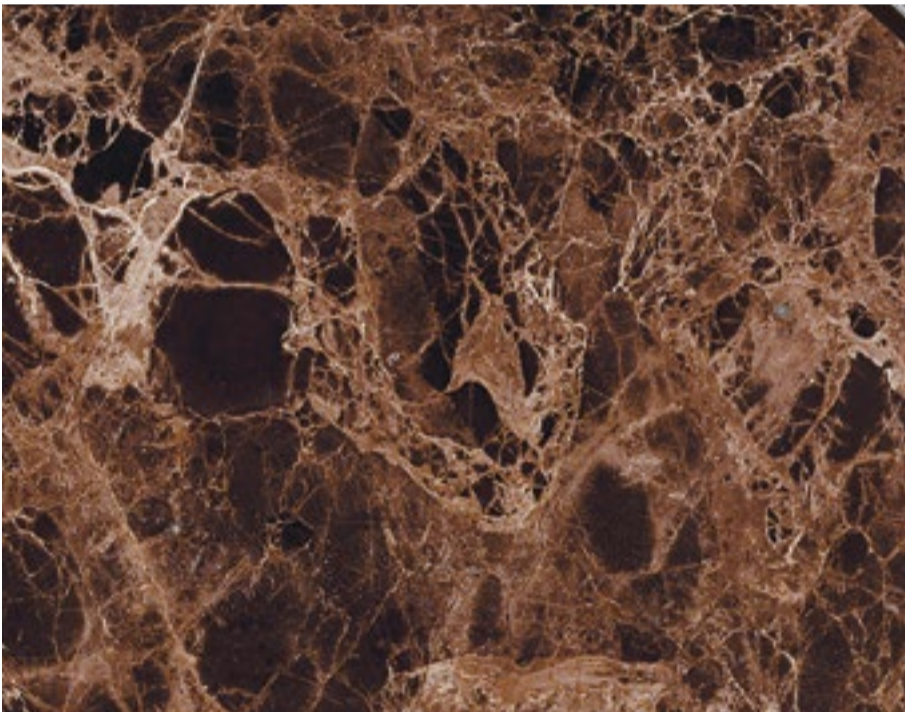
## MARMI & PIETRE MARBLES & STONES



Marmo Calacatta Oro | Gold Calacatta marble



marmo Michelangelo | Michelangelo marble



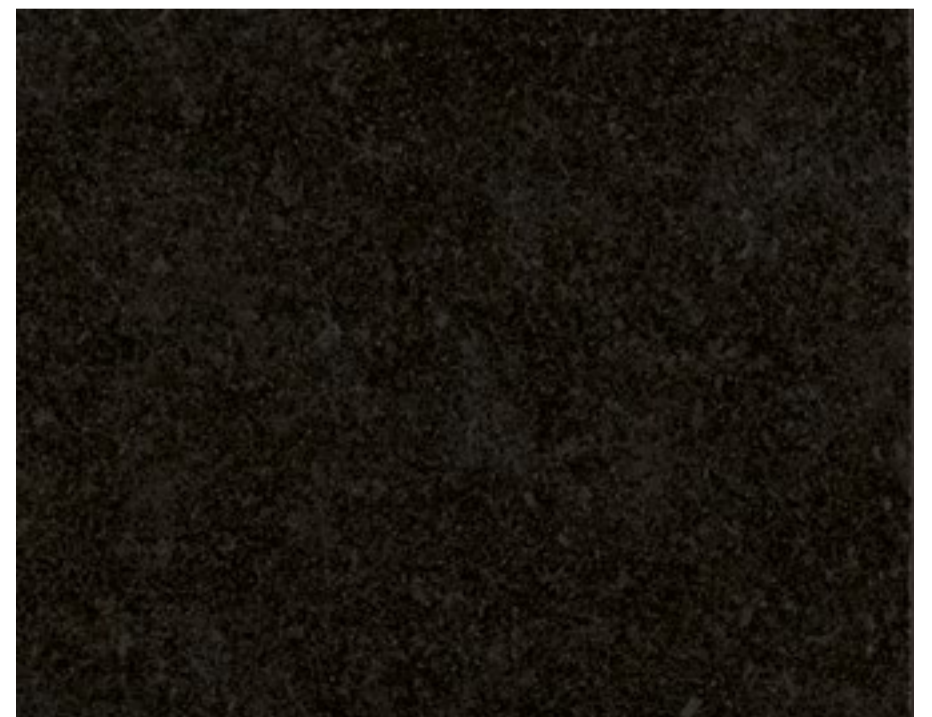
Marmo Emperador | Emperador marble



Marmo Grigio Imperiale | Imperiale grey marble



Marmo nero Marquinia | black Marquinia marble

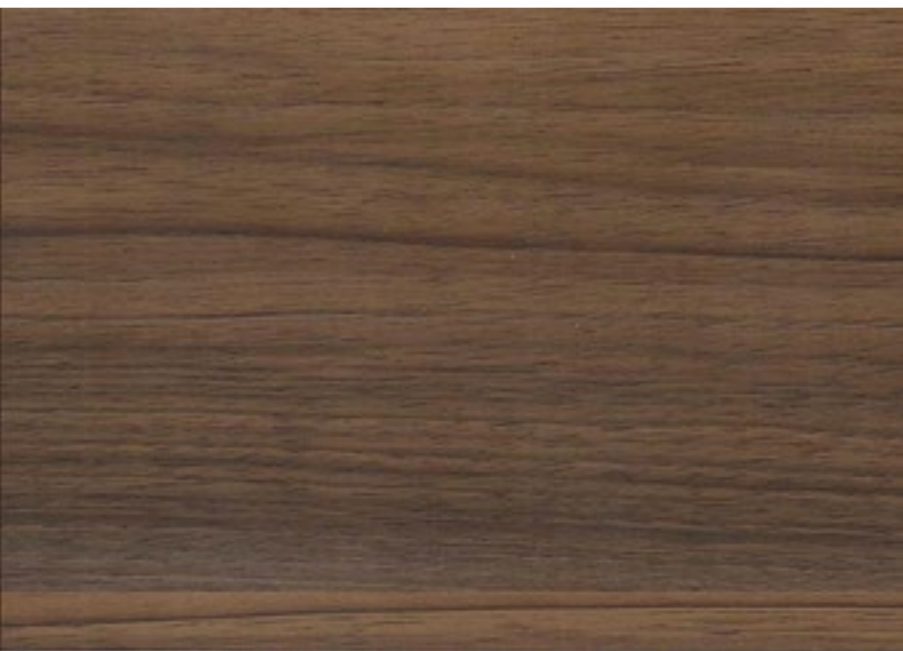


Granito nero | black granite

## ESSENZE WOOD



Palissandro\_rosewood



Noce nazionale | Italian walnut



Rovere termotrattato | heat-treated oak

## ESSENZE WOOD



Rovere sbiancato | bleached oak



Rovere Cappuccino | Cappuccino oak



Rovere wengé | wengé oak



Rovere grigio | grey oak



Rovere nero | black oak