

_____ Colours and Finishes

ALIVAR

ITALIAN DESIGN CULTURE



The pure expression of italian beauty

La qualità certificata del Made in Italy Alivar, fatta di lavorazioni tradizionali e di materiali prestigiosi, diventa il valore di un arredo dove lo stile è un'esperienza concreta, una collezione nata dalla creatività formale e dalla sensibilità per la materia, un viaggio nella bellezza dello spazio contemporaneo. Il progetto di una casa in cui ogni dettaglio è un valore unico, dove ciascun elemento è un punto d'interesse da vivere e da amare. Home Project anticipa e interpreta l'abitare contemporaneo e crea uno stile sempre attuale, che va oltre le tendenze. Complice del successo della collezione è lo spirito creativo del designer Giuseppe Bavuso che coordina, disegna e progetta da anni con passione questa collezione.

The certified quality of Alivar's italian design solutions, all traditionally-made using top-quality materials, becomes the focal point of furnishings where style is an experience to be explored.

A collection born from formal creativity and sensibility for materials and a journey into the beauty of contemporary spaces. Home design where each detail is unique and where each item is a point of interest to be cherished and enjoyed.

Home Project anticipates and interprets modern living and create a contemporary style which is timeless. Behind the collection's success is the creative spirit of the designer Giuseppe Bavuso who has spent years passionately coordinating, planning and designing this collection.

Marmi e pietre

Marbles and stones

La PIETRA che Vive

La bellezza senza tempo della pietra, disegnata dalla natura con texture e venature uniche e irripetibili, in tonalità e sfumature sempre affascinanti per la loro profondità. Il pregio, che le ha dato un ruolo fondamentale nell'architettura e nel design, e le qualità tecniche, che l'hanno eletta uno dei materiali più importanti in tutte le epoche, caratterizzano le pietre e i marmi di Alivar, selezionati per elevare il design ad un rapporto privilegiato con la natura e con l'arte di creare forme originali. Nella contemporaneità c'è un'eleganza secolare.

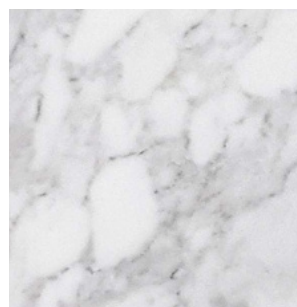
Living STONE

The timeless beauty of stone, designed by nature itself with unique, specially made textures and veins and in rich tones and colours which never fail to enchant.

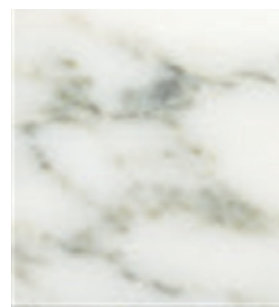
Its calibre, which has given it a key role in architecture and design, and its technical qualities, which have made it one of the most important materials throughout the ages, are characteristics of Alivar's stone and marble, selected to highlight the special relationship of design with nature and art to create original forms. In contemporary style there is a centuries-old elegance.



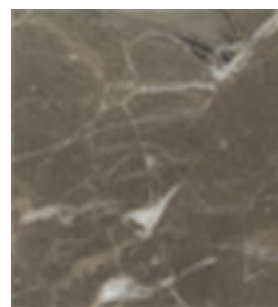
Marmi e Pietre - Marbles and Stones



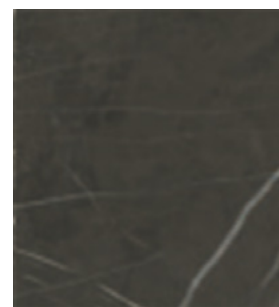
Marmo "Calacatta" bianco
White "Calacatta" marble



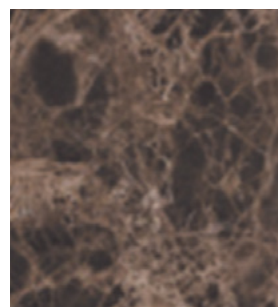
Marmo "Michelangelo" bianco
White "Michelangelo" marble



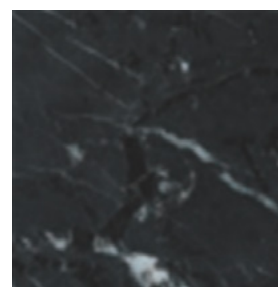
Marmo "Oriente" grigio
Grey "Oriente" marble



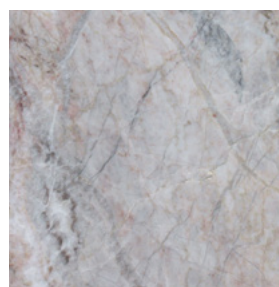
Marmo "Imperiale" grigio
Grey "Imperiale" marble



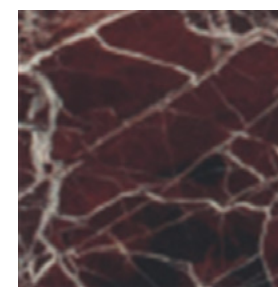
Marmo "Emperador" marrone
Brown "Emperador" marble



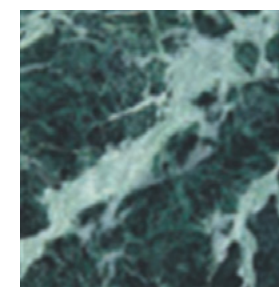
Marmo "Marquinia" nero
Black "Marquinia" marble



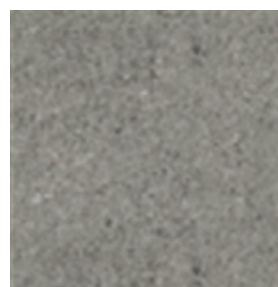
Marmo "Fior Di Pesco"
"Fior di Pesco" marble



Marmo "Rosso Levante"
"Red Levante" marble



Marmo "Issorie" verde
Green "Issorie" marble



Pietra "Serena"
"Serena" stone



Marmo "Calacatta" bianco

Provenienza : Toscana, Italia

Molto pregiato, il Calacatta è un marmo bianco caratterizzato da larghe venature di tonalità grigio caldo di colore chiaro, proveniente dalla Toscana.

Marmo "Michelangelo" bianco

Provenienza: Toscana, Italia

Il Bianco Michelangelo è un marmo di color bianco cristallino con venature grigie, proveniente dalla Toscana.

Marmo "Oriente" grigio / Grey "Oriente" marble

Provenienza: Tunisia

Grigio Oriente Il grigio oriente è un materiale di colore grigio scuro molto omogeneo con delle striature orizzontali di colori più chiari. Oltre alle caratteristiche macchie scure, può portare anche delle sfumature rosse.

Marmo "Imperiale" grigio

Provenienza: Iran

Proveniente dalle cave estrattive dell'Iran, il marmo Oriente è una roccia calcarea compatta a grana molto fine. È caratterizzato da una discreta durezza e da un fondo omogeneo che varia dal color grigio-antracite al grigio-tortora. La sua superficie presenta una tramatura con venature bianche, marcate e fini sempre diverse a seconda della cava di estrazione. Queste imperfezioni superficiali non devono essere considerate difetti, bensì pregi che evidenziano l'unicità di questo materiale.

Marmo "Emperador" marrone

Provenienza : Spagna

Marmo di colore marrone maculato con sfumature di marrone di varia intensità e venature bianche. Viene estratto in Spagna e lavorato in Toscana.

Marmo "Marquinia" nero

Provenienza : Spagna

Proviene dalla penisola iberica ed è di colore nero con delle marcate venature bianche e argento che ne disegnano la superficie. Si tratta di un materiale naturale per il quale sono da preferire un'esposizione all'interno e un clima mite.

Marmo "Rosso Levante"

Provenienza : Liguria, Italia

Il marmo rosso Levante è una varietà di marmo di colore rosso, estratta nelle cave a cielo aperto di Levante e della riviera spezzina. La colorazione rossa prevalente è dovuta all'ematite. Il suo colore particolare e le sue caratteristiche di durabilità ne fanno un marmo di particolare pregio.

Marmo "Issorie" verde

Provenienza : Valle d'Aosta, Italia

Marmo pregiato di origine italiana, proveniente dalla Valle d'Aosta, dalle caratteristiche tonalità di verde che si mescolano con il nero e con presenza di puntini di colore bianco.

Marmo "Fior di Pesco" grigio

Provenienza : Friuli Venezia Giulia, Italia

Il Fior di Pesco è un marmo italiano dai toni leggeri che vanno dal bianco al grigio al verde chiaro, con venature di color avorio, grigie e rosate. Molto apprezzato da architetti e arredatori, questo materiale si presta per svariati utilizzi.

Pietra Serena

Provenienza : Toscana, Italia

La Pietra Serena è una pietra arenaria di colore grigio, tipica dell'architettura toscana.

White "Calacatta" marble

Origin : Tuscany, Italy

Very precious, Calacatta is a white marble characterized by large veins of warm gray shades of light color, coming from Tuscany.

White "Michelangelo" marble

Origin : Tuscany, Italy

Statuary White is a crystalline white calcareous marble with grey veins; of Tuscan origin.

Grey "Oriente" marble

Origin : Tunisia

Grigio Oriente is a very homogeneous dark grey marble, with lighter coloured horizontal stripes, with dark spots and eventually even red veins.

Grey "Imperiale" marble / Stone grey

Origin : Iran

Quarried in Iran, Grey Stone marble is a compact, fine-grained calcareous stone. It has a fair degree of hardness, with a uniform base color that ranges from anthracite-grey to dove-grey. The surface vein pattern comprises distinct, fine white veins that vary depending on the originating quarry. These surface features should not be considered flaws, but rather exquisite differences that highlight the uniqueness of the material. The marble is finished with a polyester polish coat to enhance its exceptional beauty.

Brown "Emperador" marble

Origin : Spain

A brown-colored spotted marble with various shades of brown and white veins. It is quarried in Spain and can be light or dark.

Black "Marquinia" marble

Origin : Spain

Nero Marquina marble is sourced from the iberian peninsula and is black with marked white and silver veining that creates a dramatic pattern on the surface. It is a natural material and is best used indoors, in areas with mild climates.

"Red Levante" marble

Origin : Liguria, Italy

Rosso Levante is a variety of red marble, extracted in the open quarries of Levante and the coast of La Spezia (Italy). The red color is due mainly to the presence of hematite. Its particular color and its characteristics of durability make it a particularly fine marble.

"Green Issorie" marble

Origin : Valle d'Aosta, Italy

Verde Issorie is a prized Italian marble quarried in the Valle d'Aosta area; it is distinguished by variegated shades of green and black, punctuated by tiny white dots.

Marmo "Fior di Pesco" grigio

Origin : Friuli Venezia Giulia, Italy

Fior di Pesco is an Italian marble with light tones ranging from white to gray to light green with ivory, gray and rosé veins. Very much appreciated by architects and interior designers, this material is suitable for a variety of interior.

"Pietra Serena" stone

Origin : Tuscany, Italy

The Pietra Serena stone is a sandstone of a grey colour, typical of the Tuscan architecture.

EsSENze

Wood

L'essenza del LEGNO

La vitalità del legno sta nel dinamismo delle venature, nell'incantevole chiaroscuro del colore e nel calore dell'atmosfera che sa creare attorno a sé. I legni Alivar sono il frutto di una selezione accurata tra le essenze tradizionali e quelle più originali, una ricerca mossa dalla passione per questo materiale straordinario che non finisce mai di sorprendere e di ispirare il design. Arte ebanistica e natura si fondono in mobili sempre meravigliosamente attuali con lavorazioni di alta qualità. Tutti i legni vengono utilizzati nel pieno rispetto della sostenibilità ambientale.

The essence of WOOD

Wood owes its vitality to the dynamic nature of the veins. Its enchanting light and shade effects and the warmth of the atmosphere it creates around itself. Alivar's wood is painstakingly chosen from traditional types of wood and more original ones, a research driven by our passion for this exceptional material which never ceases to surprise and inspire design. The art of woodworking and nature come together to create gloriously modern furniture with high-quality finishes. All wood is used in an environmentally-friendly way.



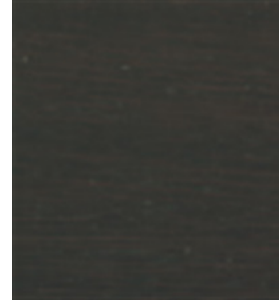
Essenze - Wood



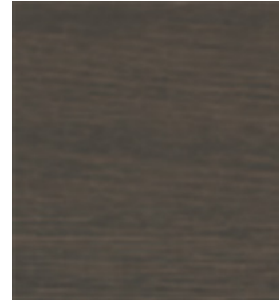
Frassino tinto "Rovere"
"Oak"-stained ash



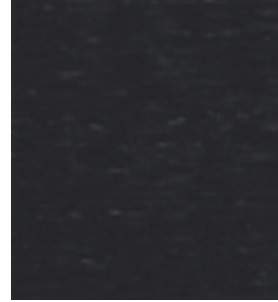
Frassino tinto grigio
Grey-stained ash



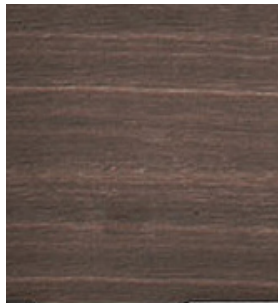
Frassino tinto wengé
Wengé-stained ash



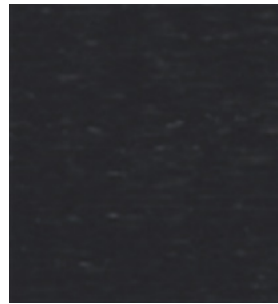
Frassino tinto termotrattato
Heat-treated stained ash



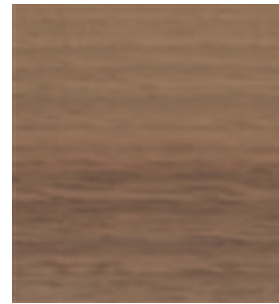
Frassino nero
Black ash



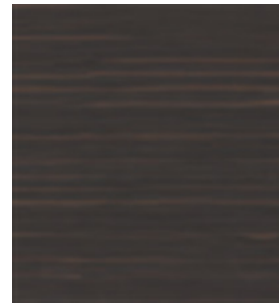
Rovere termotrattato
Heat-treated oak



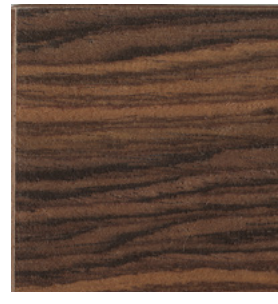
Rovere nero
Black oak



Noce "Nazionale"
"Italian" walnut



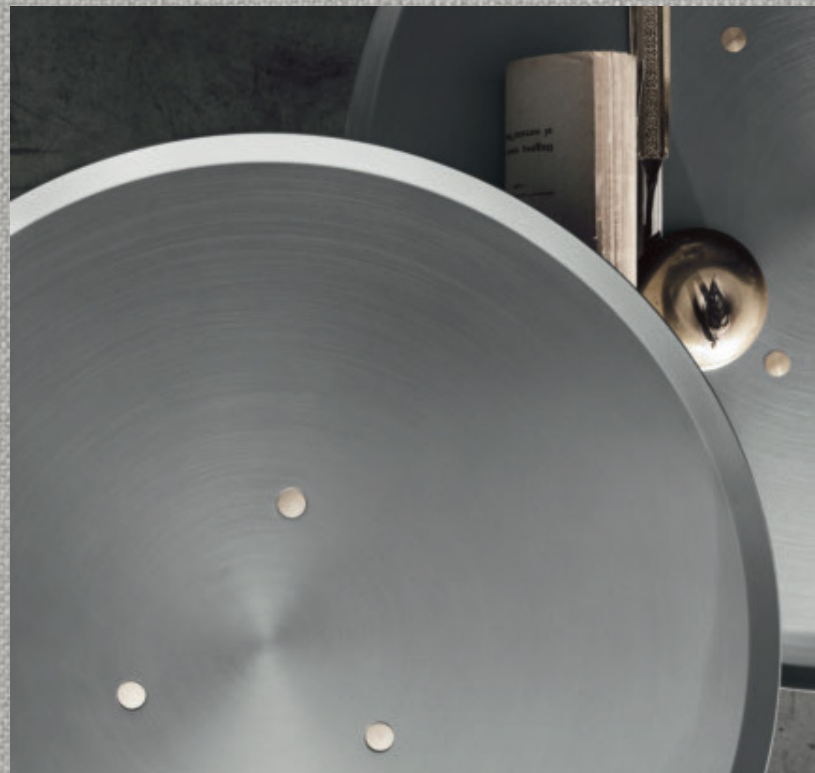
Ebano
Ebony



Palissandro
Rosewood



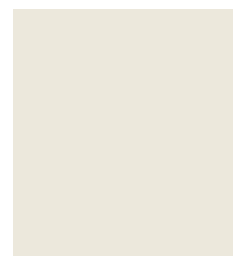
Laccature per legno & metallo
———— Wood & Steel lacquers



Laccature per legno - Wood lacquers



RAL 9016
Bianco lucido - opaco
Glossy - matt white



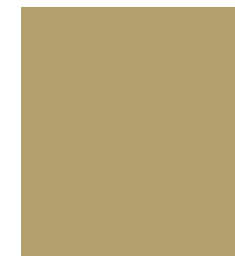
04.84
Crema lucido - opaco
Glossy - matt cream



D 050.70.10
Cipria lucido - opaco
Glossy - matt powder



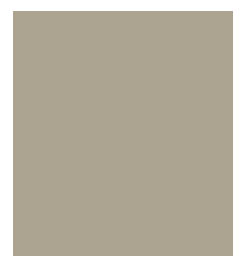
15.65
Sabbia lucido - opaco
Glossy - matt sand



D 080.60.30
Senape lucido - opaco
Glossy - matt mustard



05.70
Tortora lucido - opaco
Glossy - matt dove brown



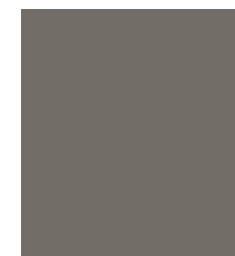
10.60
Corda lucido - opaco
Glossy - matt rope



05.60
Grigio lucido - opaco
Glossy - matt grey



RAL 7006
Castoro lucido - opaco
Glossy - matt beaver



D 060.40.05
Fango lucido - opaco
Glossy - matt mud



D 220.60.10
Winter blue lucido - opaco
Glossy - matt winter blue



D 260.40.10
Lavanda lucido - opaco
Glossy - matt lavender



RAL 6033
Menta lucido - opaco
Glossy - matt mint



D 200.40.10
Alzavola lucido - opaco
Glossy - matt teal



RAL 6003
Verde lucido - opaco
Glossy - matt green



RAL 8004
Ruggine lucido - opaco
Glossy - matt rust



40.20
Rosso scuro lucido - opaco
Glossy - matt dark red



RAL 3007
Amarantho lucido - opaco
Glossy - matt amaranth



D 100.60.05
Grigio lucido - opaco
Glossy - matt grey



RAL 9005
Nero lucido - opaco
Glossy - matt black

Laccature per Metallo - Steel lacquers



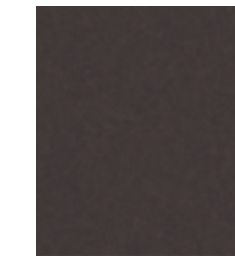
RAL 9016
Bianco opaco
Matt white



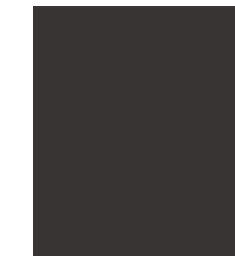
RAL 1013
Crema
Cream



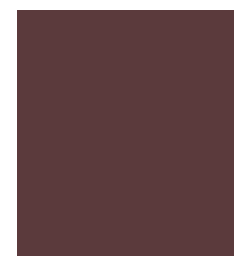
RAL 7006
Castoro
Beaver



4820
Ruggine perlato
Rusty pearl



RAL 8019
Testa di moro opaco
Matt dark brown



RAL 3007
Amaranto
Amaranth



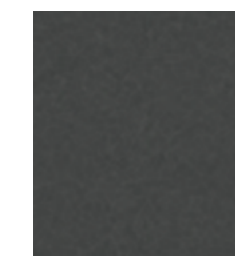
Alluminio cromo
Alu-chrome



Alluminio gofrato
Embossed aluminium



3100
Golden bronze



320
Nero perlato
Black pearl



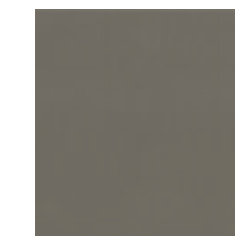
36
Oro Impero
Empire Gold



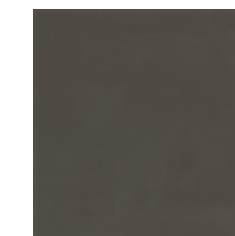
RAL 9005
Nero opaco
Matt black



Champagne

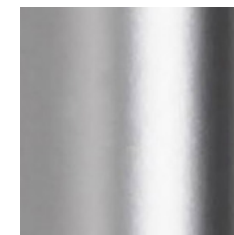


Laccatura Peltrox
Peltrox lacquer



Bronzo
Bronze

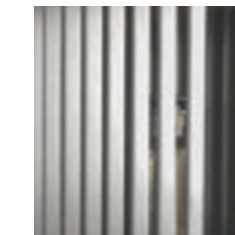
Finiture / Steel finishes



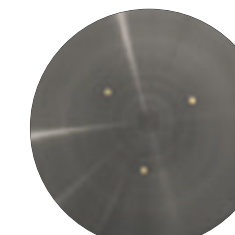
Cromo
Chrome



Nickel nero
Black nickel



art. Diesys
Finitura acciaio spazzolato
Brushed steel finish



art. T-Gong
Finitura Peltrox
Peltrox finish



art. T-Gong
Finitura Bronzo
Bronze finish

Cuoio

Hide

CUOIO Segni creativi

La morbidezza, l'elasticità, il piacere del tocco. Il cuoio è un materiale ad alta traspirabilità da sempre usato per il suo essere straordinariamente versatile. Nella casa Alivar, il cuoio lavorato con il gusto per l'artigianalità porta il senso deciso della natura, creando il calore del comfort con l'emozione della materia.

HIDE Signs of creativity

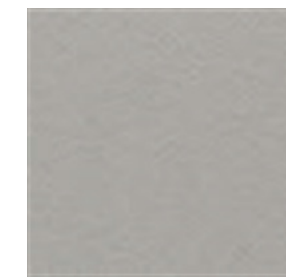
With its softness, flexibility and pleasurable feel, hide is a very breathable material, its extraordinary versatility making it a top choice since time immemorial. At Alivar, our hide is made with a taste for craftsmanship and has a definite natural feel to it, bringing warmth of comfort with the excellence of the material.



C10
bianco / white



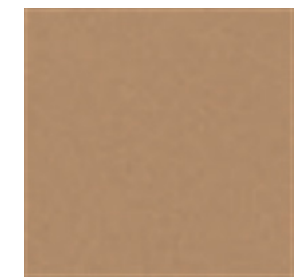
C23
lino / off-white



C01
argento / silver



C17
sabbia / sand



C16
naturale / natural



C115
cognac



C11
moka



C32
caffè / coffee



C28
fango / mud



C18
grafite / graphite

Pelli

Leathers

PELLE

Emozioni da toccare

La pelle naturale regala un'inimitabile sensazione tattile, una perfetta aderenza alle forme e un comfort straordinario, grazie anche alle cuciture sartoriali Alivar.

E' un materiale nobile e molto resistente che con il tempo acquista ancora più valore e bellezza, diventando unico e speciale.

LEATHER

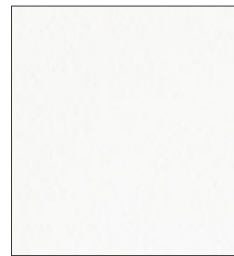
Excellence at your fingertips

Natural leather offers an unbeatable feel, a perfect close fit and extraordinary comfort thanks to Alivar's tailored stitching.

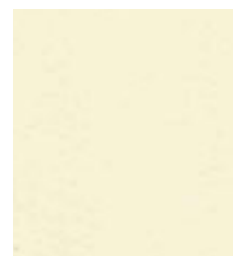
It is a noble and highly resistant material which over time becomes even more valuable and beautiful in its own unique and special way.



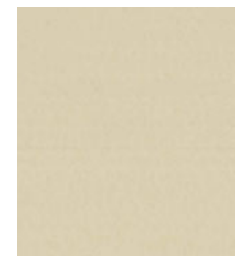
Pelli Essential cat. E - Essential Leather Cat. E



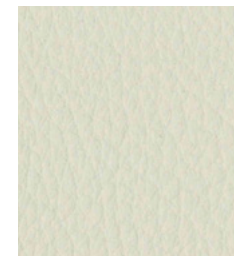
E 1535
Essential



E 15
Essential



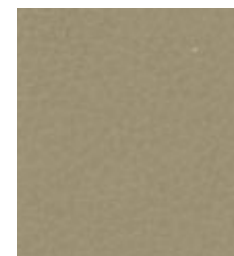
E 06
Essential



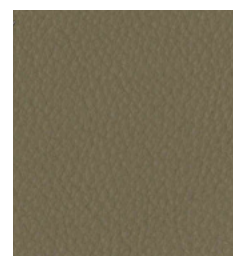
E 01
Essential



E 16
Essential



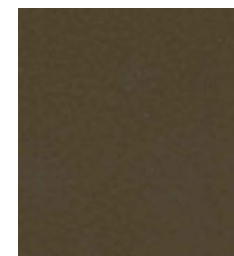
E 02
Essential



E 05
Essential



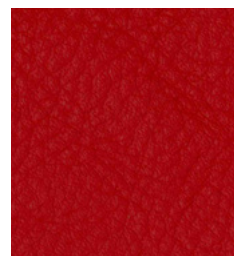
E 12
Essential



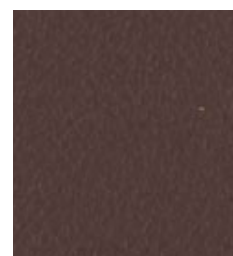
E 499
Essential



E 1010
Essential



E 17
Essential



E 13
Essential



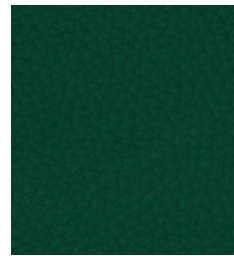
E 211
Essential



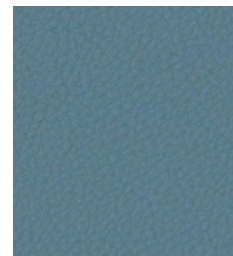
E 212
Essential



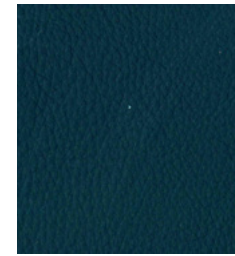
E 213
Essential



E 214
Essential



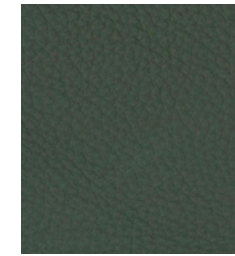
E 215
Essential



E 210
Essential



E 03
Essential



E 28
Essential

Pelli Essential cat. E - Essential Leather Cat. E

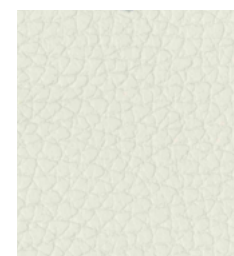


E 1500
Essential

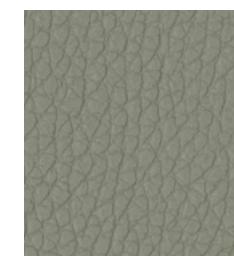
Pelli tinte con aniline e rifinite in un' ampia gamma di colori per soddisfare tutte le richieste di abbinamento.

/

Aniline-dyed leathers in a wide range of colours that can satisfy any matching requests.



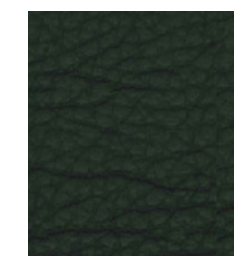
E 216
Dollaro



E 217
Dollaro



E 218
Dollaro



E Nero
Dollaro

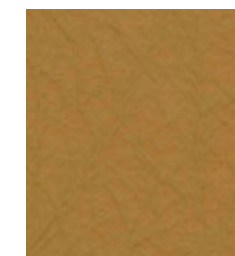
DOLLARO grana grossa naturale / significant natural grain.



E 506
Bufalo

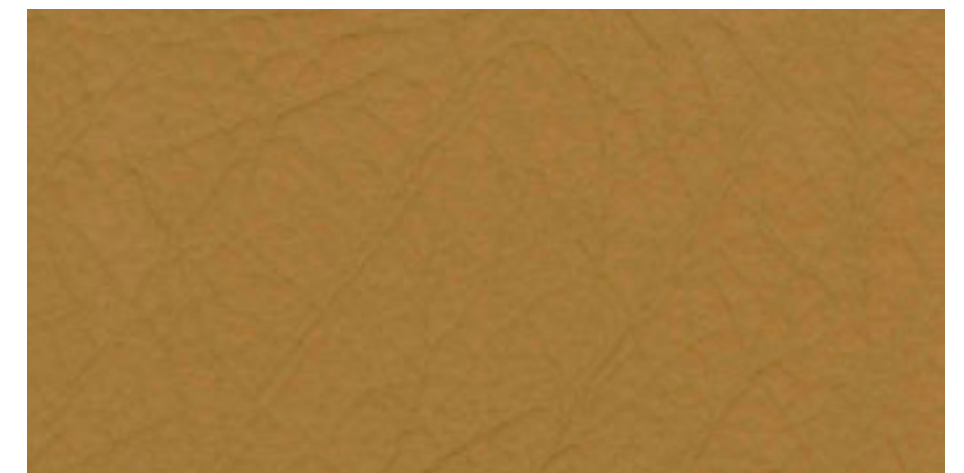


E 501
Bufalo



E 504
Bufalo

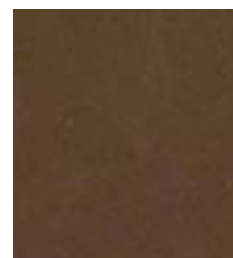
BUFALO. Le caratteristiche principali della pelle di bufalo sono la sua resistenza, la sua solidità e il mantenimento delle sue venature e rugosità naturali. / The main characteristics of buffalo leather are its resistance, its solidity and the maintenance of its natural grain and roughness.



Pelli cat. F - Leather Cat. F



F 92111
WAX

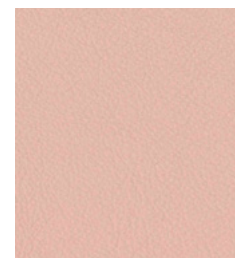


F 92118
WAX



F 92115
WAX

WAX Pelle pieno fiore trattata a cera.
/ Full grain leather treated with wax.



F 92167



F 92168



F 92169



F 92159



F 92160



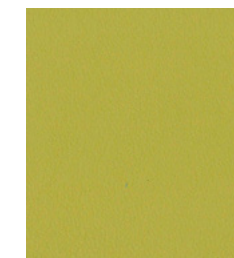
F 92170



F 92171



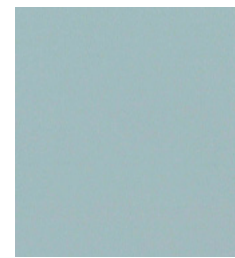
F 92172



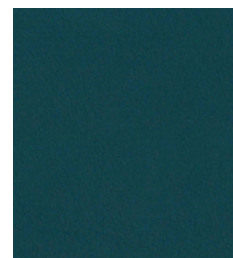
F 92173



F 92174



F 92175



F 92176

Pelli conciate al cromo, tinte con aniline e rifinite.
Taglia elevata, tatto eccellente, ottima resa, duttile a qualsiasi tipo di applicazione.

Chrome-tanned leathers, dyed aniline and finished;
big size, excellent feel, excellent cutting gain, supple to any type of application.

Pelli cat. G - Leather Cat. G



G 92142
Wild



G 92144
Wild



G 713
Antique

WILD Pelle anilina invecchiata, carteggiata manualmente.
Particolarità di questo articolo è il connubio tra l'effetto "vintage" ed un tatto vellutato. / Chromium tanned, aniline dyed leather, buffed manually to obtain a worn-look. A special combination between an old-fashioned look and a superbe suppleness of hand.

ANTIQUÉ Pelle naturale liscia effetto invecchiato. / A soft, smooth, worn-looking leather for a lived-in look.



G 92135
Ultrasoft



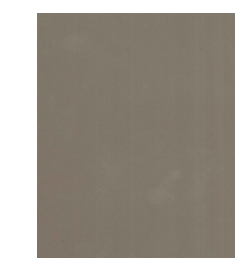
G 92130
Ultrasoft



G 714
Ultrasoft



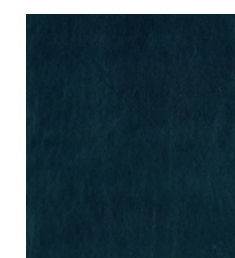
G 92123
Ultrasoft



G 715
Ultrasoft



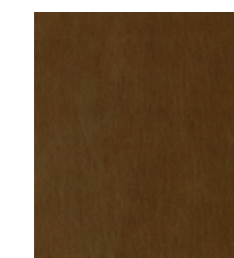
G 720
Shine



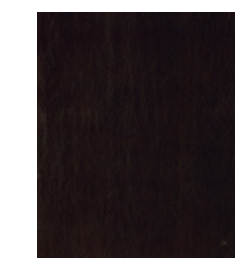
G 724
Shine



G 725
Shine



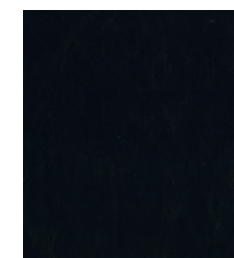
G 721
Shine



G 722
Shine

ULTRASOFT Pelli lavorate con le migliori tecniche per esaltarne le caratteristiche estetiche e di tatto. Grane naturali e morbide. / Leathers are tanned with the best techniques in order to intensify their look and touch. Natural and smooth grain.

SHINE Pelle pieno fiore anilina, tintura passante, rifinitura con oli e cere naturali. Articolo con mano ferma, tatto ceroso e aspetto lucido con effetto bicolore. / Full grain leather. Aniline dyed, finishing with oils, natural waxes and resins. Article with a firm, waxy feel and shiny appearance with a light two-tones effect.



G 723
Shine

Pelli cat. G - Leather Cat. G



G 707
Piumone



G 708
Piumone



G 719
Piumone

PIUMONE Pelle a grana naturale dall'elevato spessore con un tatto e una mano eccellenti. / The softness of the leather but much thicker and stronger with an excellent touch and texture.

Pelli cat. Luxe - Leather Cat. Luxe



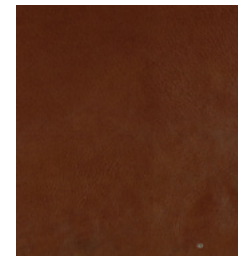
Luxe 416
Touch



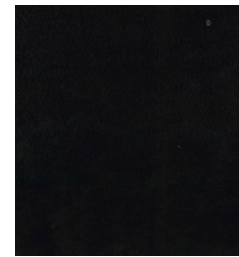
Luxe 427
Touch



Luxe 701
Touch



Luxe 428
Touch



Luxe 429
Touch

TOUCH Pelle all'anilina di alto pregio, totalmente naturale e morbidissima al tatto. Alcune imperfezioni, cicatrici o differenze di tonalità sono da considerarsi caratteristiche di genuinità e pregio di questo prodotto completamente naturale. / Prestigious pure natural aniline leather with a very smooth touch. Some imperfections, scars or colour tone differences are to be considered as a characteristic of genuineness and value of this totally natural product.

Pelli stampate cat. Luxe - Printed leather Cat. Luxe



Luxe 423
Military



Luxe 424
Siena



Luxe 425
Tabacco

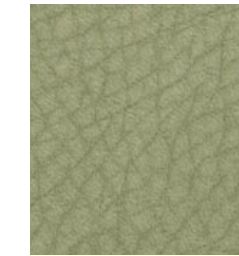
Nabuk cat. G & Luxe - Nubuk Cat.G & Luxe



G 92108
Nabuk



G 92509
Nabuk



G 92211
Nabuk



G 92113
Nabuk



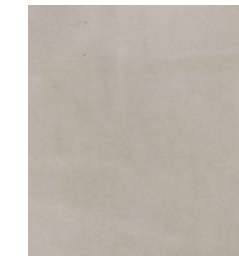
G 92109
Nabuk



G 92155
Nabuk



G 92513
Nabuk



Luxe 412
Nabuk



Luxe 419
Nabuk



Luxe 421
Nabuk

Pelli conciate al cromo, tinte con aniline, asciugate sottovuoto e nabucate, con una mano e un tatto di altissimo pregio.

Chrome-tanned leathers, dyed aniline, dry vacuum and suede finish, with hand and a touch of highest quality.



Decoro raffinato disegnato in esclusiva per Alivar.

Disponibile su tutti i pellami.

/

Sophisticated embroidery, specially designed for Alivar.

Available on all leathers.



ECO Pelle / NABUK

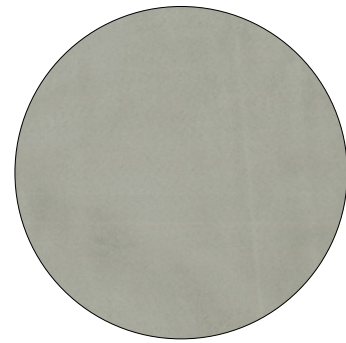
ECO Leathers / Nabuk

L' Eco nabuk è un articolo sintetico con le stesse caratteristiche sia estetiche che tattili delle pelli conciate. Di effetto estremamente naturale ha una superficie morbida e vellutata simile al nabuk. Mantiene inalterata durata e qualità semplicemente con acqua e sapone neutro.

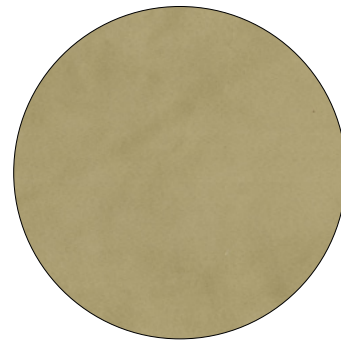
It's a product made of innovative materials inspired by chrome-tanned leather, is a man-made product that reproduces the same aesthetic and tactile characteristics of the nubuk. Eco nubuk maintains its long-lasting beauty by simply using neutral soap and water.



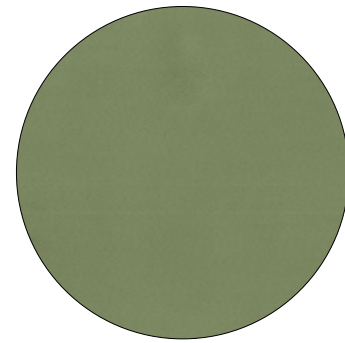
Eco-Nabuk / Eco-Nubuk



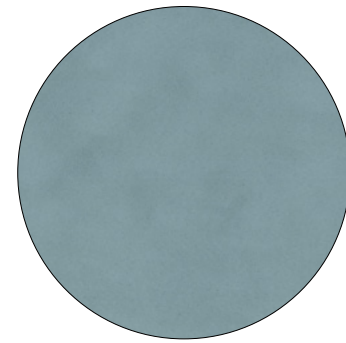
D 5360
100% PES



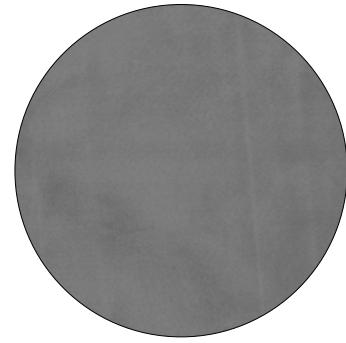
D 5364
100% PES



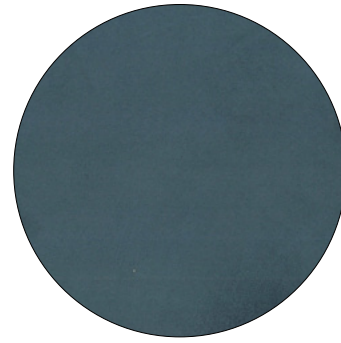
D 5366
100% PES



D 5372
100% PES



D 5367
100% PES



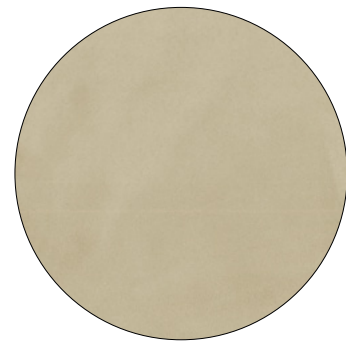
D 5371
100% PES



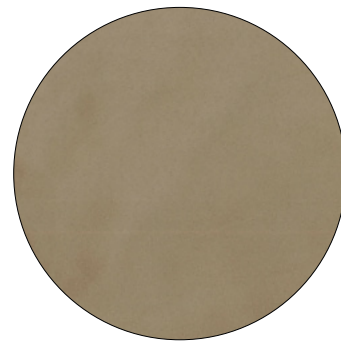
D 5370
100% PES



D 5369
100% PES



D 5361
100% PES

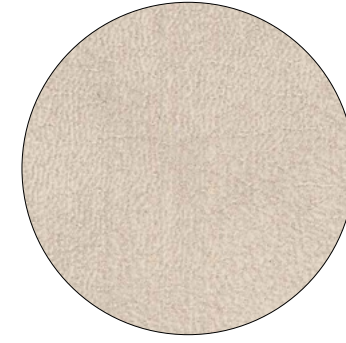


D 5363
100% PES



D 5368
100% PES

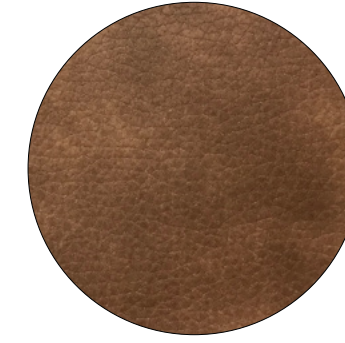
Eco-Pelle / Eco-Leather



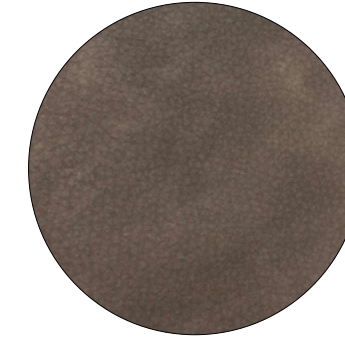
C 2335
Vintage



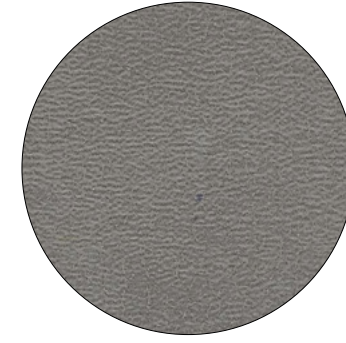
C 2337
Vintage



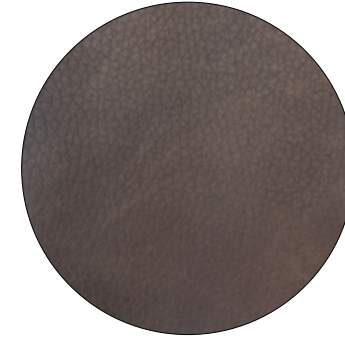
C 2443
Vintage



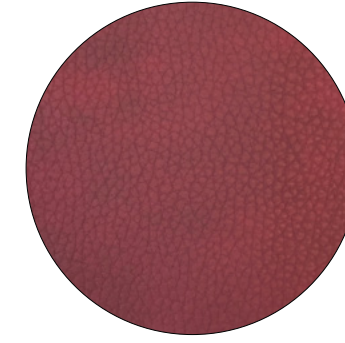
C 2444
Vintage



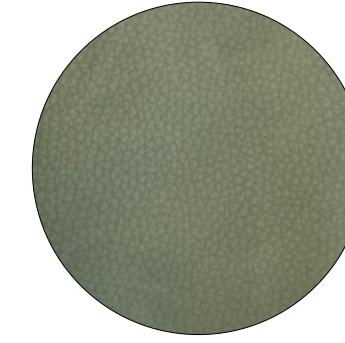
C 2338
Vintage



C 2445
Vintage



C 2446
Vintage



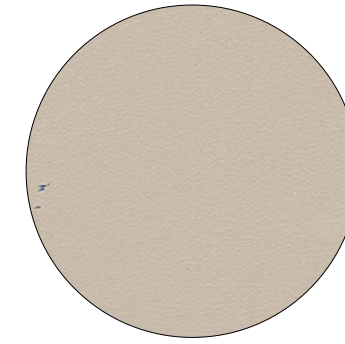
C 2447
Vintage



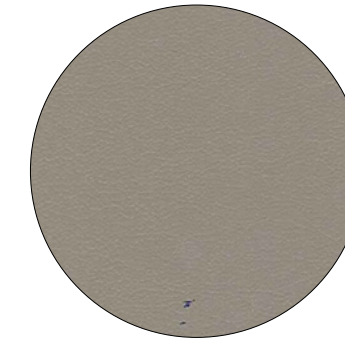
C 2448
Vintage



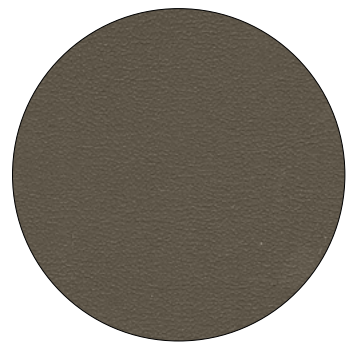
B 2066



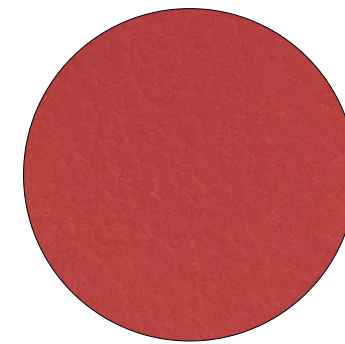
B 3074



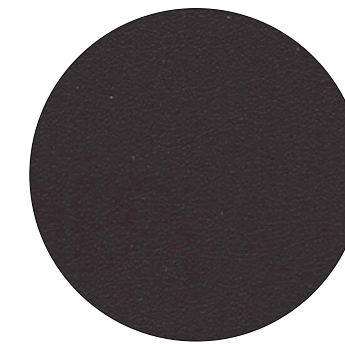
B 3149



B 3152



B 3070



B 2067

Tessuti Fabrics

Un giardino di TESSUTI e colori

Abbiamo selezionato una innumerevole quantità di tessuti, dalle molteplici composizioni e dalle varianti colore e tonalità più disparate.

A garden of FABRICS and colours

We have selected an endless number of fabrics, with various compositions and the most diverse colours and shades.



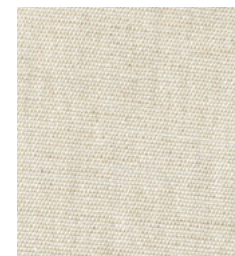
Tessuti - Fabrics



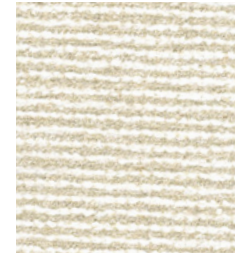
Cat. D 5099
52%LI-48%VI



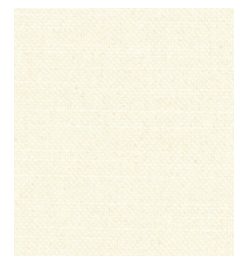
Cat. D 5384
43% VI-35% CO-12%PL-7%PC-3%LI



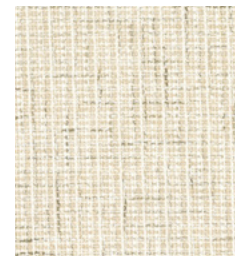
Cat. C 2470
39% LI-27% JU-24%VI-10%CO



Cat. D 5337
44%CO-41%VI-6%PC-6%LI-3%PA



Cat. A 4077
70%CO-10%PES-10%ACR-10%AF



Cat. C 2499
49%CO-35%VI-10%PC-6%PL



Cat. D 5333
61% CO-26% VI-8%LI-5%PA



Cat. A 4089
100% PES



Cat. C 2475
90% PES-10% CV



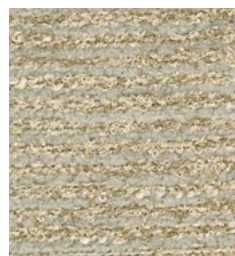
Cat. C 2487
100% PES



Cat. D 5331
61% CO-26% VI-8%LI-5%PA



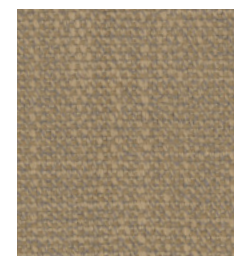
Cat. D 5100
52% LI - 48% VI



Cat. D 5338
44%CO-41%VI-6%PC-6%LI-3%PA



Cat. A 4065
100% PES



Cat. B 3254
87% PL-13% VI



Cat. D 5342
100% PES (ULTRASOFT VELVET)



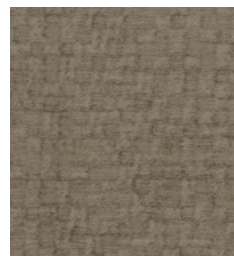
Cat. A 4078
70%CO-10%PES-10%ACR-10%AF



Cat. C 2498
49%CO-35%VI-10%PC-6%PL



Cat. D 5385
50%PL-26%VI-12%PC-12%CO



Cat. C 2502
55%VI-23%CO-17%PL-5%PC

Tessuti - Fabrics



Cat. C 2483
100%PES



Cat. A 4053
100%PL (VELVET)



Cat. C 2488
100%PES



Cat. A 4066
100%PES



Cat. C 2449
100% PES



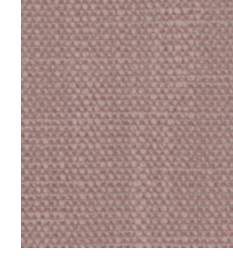
Cat. C 2450
100% PES



Cat. A 4052
100% PL (VELVET)



Cat. C 2503
55% VI-23%CO 17%PL-5%PC



Cat. B 3255
87% PL-13%VI



Cat. C 2460
100% PES



Cat. A 4056
100%PL (VELVET)



Cat. A 4069
100%PES



Cat. A 4055
100%PL (VELVET)



Cat. A 4057
100%PL (VELVET)

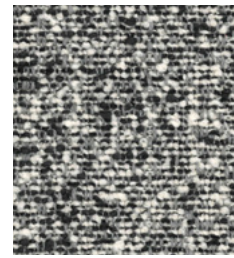
Tessuti - Fabrics



Cat. A 4082
70%CO-10%PES-10%ACR-10%AF



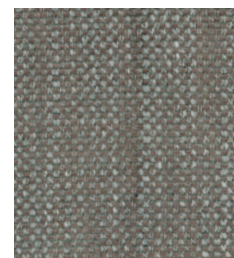
Cat. D 5373
43% VI-35% CO-12%PL-7%PC-3%LI



Cat. D 5381
44% CO-26% VI-14%LI-12%PL-4%PA



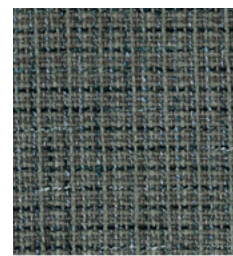
Cat. D 5328
100%PES



Cat. B 3244
49%PC-48%PL-3%VI



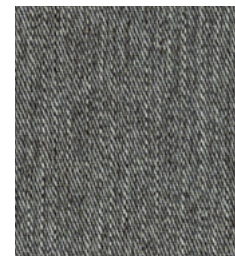
Cat. C 2453
100%PES



Cat. C 2496
49% CO-35%VI-10%PC-6%PL



Cat. C 2473
39%LI-27%JU-24%VI-10%CO



Cat. D 5330
100% PES



Cat. D 5379
50% PL-26%VI-12%PC-12%CO



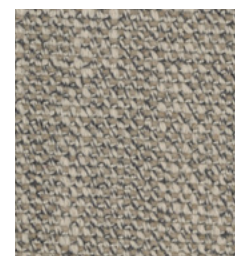
Cat. C 2463
100% PES



Cat. C 2506
55%VI-23%CO-17%PL-5%PC



Cat. D 5101
52% LI-48%VI



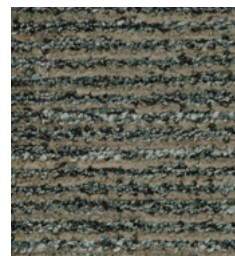
Cat. B 3257
87%PL-13%VI



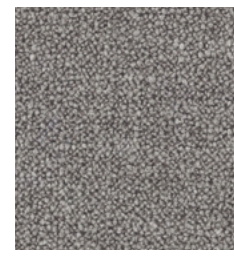
Cat. A 4084
100%PES



Cat. C 2484
100%PES



Cat. D 5339
44%CO-41%VI-6%PC-6%LI-3%PA

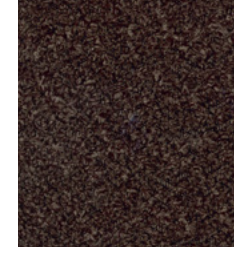


Cat. B 3234
76%PES-16%VI-8%LI

Tessuti - Fabrics



Cat. D 5382
44%CO-26%VI-14%LI 12%PL-4%PA



Cat. C 2454
100%PES



Cat. C 2474
39%LI-27%JU-24%VI-10%CO



Cat. A 4070
100% PES



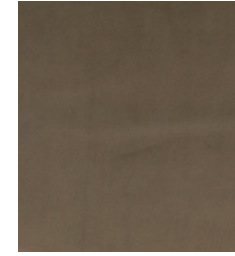
Cat. A 4083
70% CO-10%PES-10%ACR-10%AF



Cat. D 5347
100% PES (ULTRASOFT VELVET)



Cat. D 5329
100% PES



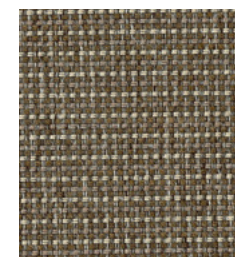
Cat. D 5341
100% PES (ULTRASOFT VELVET)



Cat. C 2461
100% PES



Cat. C 2471
39% LI-27%JU-24%VI-10%CO



Cat. C 2478
90% PES - 10%CV



Cat. C 2489
100%PES



Cat. A 4080
70%CO-10%PES-10%ACR-10%AF



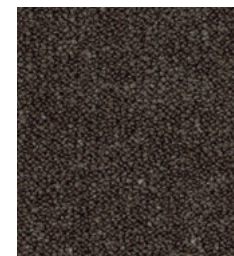
Cat. D 5383
43%VI-35%CO-12%PL-7%PC-3%LI



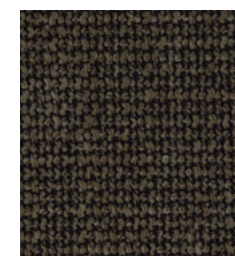
Cat. D 5345
100% PES (ULTRASOFT VELVET)



Cat. C 2459
100%PES



Cat. B 3231
76%PES-16%VI-8%LI



Cat. A 4085
100%PES



Cat. A 4068
100%PES

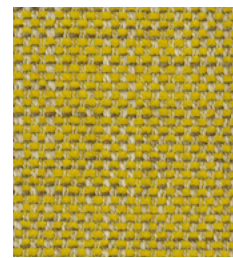


Cat. D 5334
61%CO-26%VI-8%LI-5%PA

Tessuti - Fabrics



Cat. B 3243
65%PC-35%PL



Cat. B3242
49% PC-48%PL-3%VI



Cat. C 2490
100% PES



Cat. C 2479
100% PES



Cat. C 2456
100% PES



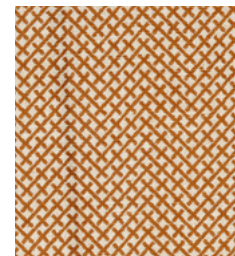
Cat. D 5386
50%PL-26%VI-12%PC-12%CO



Cat. A 4054
100% PL (VELVET)



Cat. D 5355
37%PES-26%CV-20%CO-11%PAN-6%LI



Cat. D 5358
66% CV-19%PES-10%LI-5%CO



Cat. C 2481
100% PES



Cat. C 2492
100% PES



Cat. C 2457
100% PES



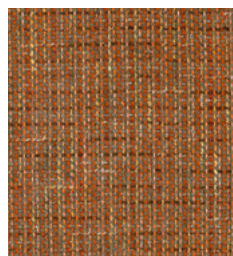
Cat. A 4090
100% PES



Cat. A 4067
100% PES



Cat. D 5326
100% PES



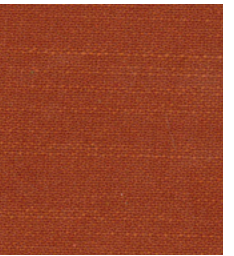
Cat. C 2497
49% CO-35%VI-10%PC-6%PL



Cat. C 2455
100% PES

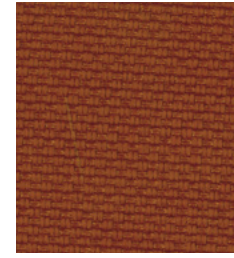


Cat. D 5388
50% PL-26%VI-12%PC-12%CO



Cat. A 4079
70%CO-10%PES-10%ACR-10%AF

Tessuti - Fabrics



Cat. C 2494
100% PES



Cat. A 4071
100%PES



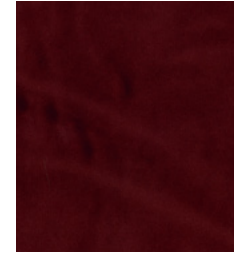
Cat. C 2482
100%PES



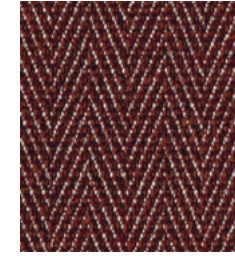
Cat. C 2504
55%VI-23%CO-17%PL-5%PC



Cat. C 2472
39%LI-27%JU-24%VI-10%CO



Cat. A 4058
100% PL (VELVET)



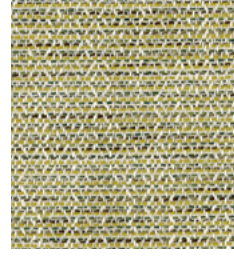
Cat. D 5387
50% PL-26%VI-12%PC-12%CO



Cat. A 4075
100% PES



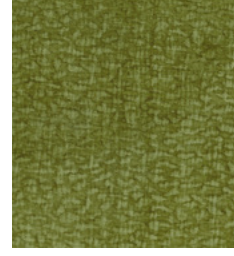
Cat. D 5106
60%PE - 22%CO-9%VI-9%PL (VELVET)



Cat. D 5354
37%PES-26%CV-20%CO-11%PAN-6%LI



Cat. D 5327
100% PES



Cat. A 4072
100%PES



Cat. C 2480
100%PES



Cat. C 2476
90%PES-10%CV



Cat. C 2468
100% PES



Cat. C 2493
100%PES



Cat. C 2458
100%PES



Cat. D 5374
44%CO-26%VI-14%LI-12%PL-4%PA



Cat. A 4087
100%PES

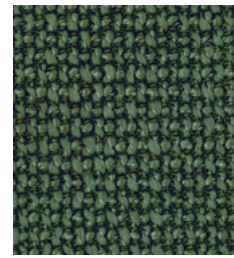
Tessuti - Fabrics



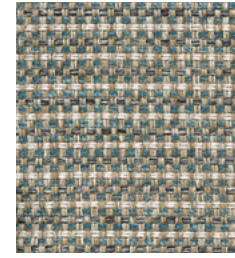
Cat. D 5375
50%PL-26%VI-12%PC-12%CO



Cat. A 4063
100% PL (VELVET)



Cat. A 4088
100% PES



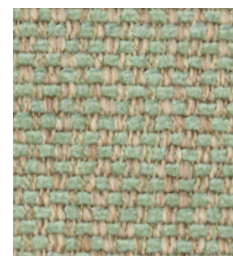
Cat. C 2477
90%PES-10%CV



Cat. A 4059
100%PL (VELVET)



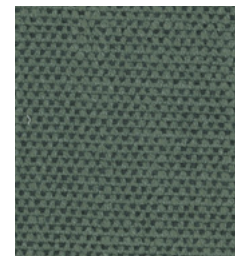
Cat. C 2485
100%PES



Cat. B 3240
49% PC-48% PL-3%VI



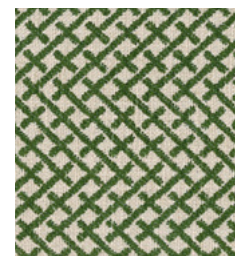
Cat. C 2467
100% PES



Cat. B 3256
87% PL-13% VI



Cat. A 4062
100% PL (VELVET)



Cat. D 5357
66% CV-19% PES-10%LI-5%CO



Cat. B 3241
65% PC -35% PL



Cat. C 2452
100%PES



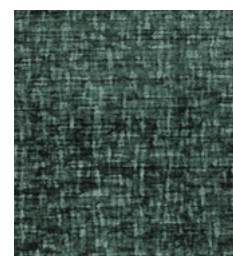
Cat. D 5325
100% PES



Cat. C 2464
100% PES



Cat. C 2465
100% PES



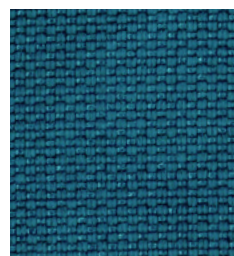
Cat. A 4073
100% PES



Cat. C 2466
100%PES



Cat. A 4064
100%PL(VELVET)



Cat. C 2495
100%PES

Tessuti - Fabrics



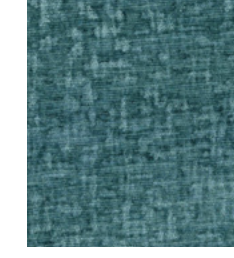
Cat. D 5346
100%PES (ULTRASOFT VELVET)



Cat. D 5336
52%LI-48%VI



Cat. A 4086
100%PES



Cat. A 4074
100%PES



Cat. A 4060
100% PL (VELVET)



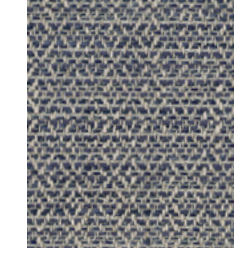
Cat. C 2491
100% PES



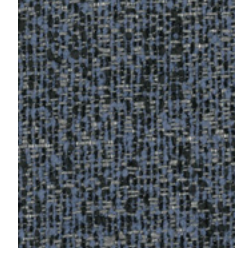
Cat. D 5344
100% PES (ULTRASOFT VELVET)



Cat. D 5359
66% CV-19% PES-10%LI-5%CO



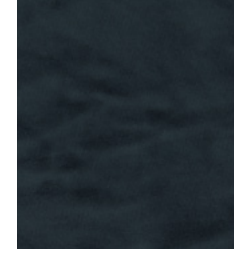
Cat. D 5356
37%PES-26%CV-20%CO-11%PAN-6%LI



Cat. D 5377
44% CO-26%VI-14%LI-12%PL-4%PA



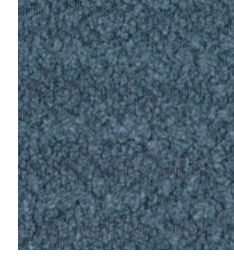
Cat. D 5332
61%CO-26%VI-8%LI-5%PA



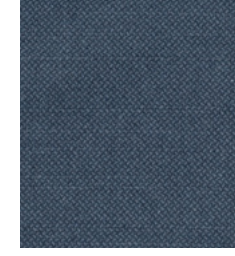
Cat. A 4061
100%PL (VELVET)



Cat. C 2486
100%PES



Cat. C 2451
100%PES



Cat. A 4081
70%CO-10%PES-10%ACR-10%AF



Cat. C 2505
55% VI-23%CO-17%PL-5%PC



Cat. C 2462
100%PES



Cat. D 5378
50%PL-26%VI-12%PC-12%CO



Cat. A 4076
100% PES

Velluti

Velvets



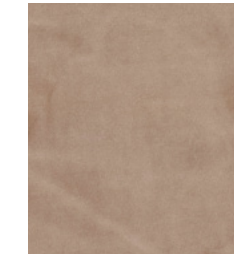
Velluti - Velvets



Cat. D 5342
100% PES (ULTRASOFT VELVET)



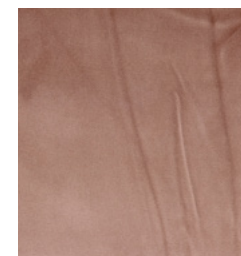
Cat. A 4053
100%PL (VELVET)



Cat. A 4052
100% PL (VELVET)



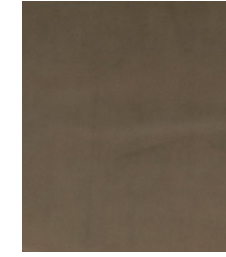
Cat. A 4056
100%PL (VELVET)



Cat. A 4055
100%PL (VELVET)



Cat. A 4057
100%PL (VELVET)



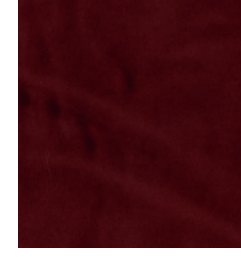
Cat. D 5341
100% PES (ULTRASOFT VELVET)



Cat. D 5345
100% PES (ULTRASOFT VELVET)



Cat. A 4054
100% PL (VELVET)



Cat. A 4058
100% PL (VELVET)



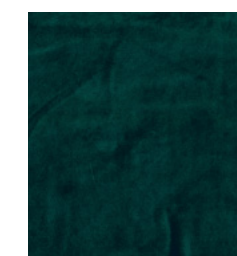
Cat. D 5106
60%PE - 22%CO-9%VI-9%PL (VELVET)



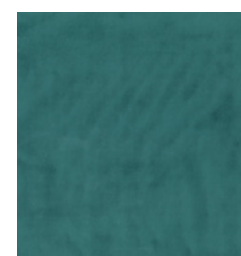
Cat. A 4059
100%PL (VELVET)



Cat. A 4062
100% PL (VELVET)



Cat. A 4064
100%PL(VELVET)



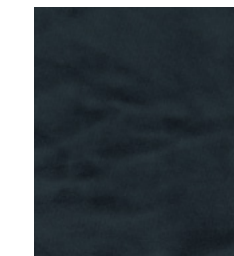
Cat. D 5346
100%PES (ULTRASOFT VELVET)



Cat. A 4060
100% PL (VELVET)



Cat. D 5344
100% PES (ULTRASOFT VELVET)



Cat. A 4061
100%PL (VELVET)

www.alivar.com