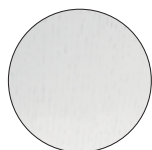
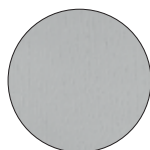


Finishes / Finiture

Lacquered wood with visible grains / Legno laccato a poro aperto



BI
White
Bianco



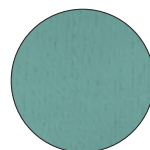
GC
Light grey
Grigio chiaro
PANTONE 400 U



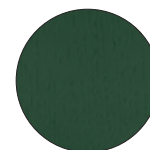
AN
Black
Nero
PANTONE Black U



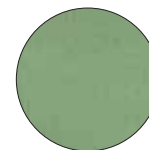
BL2
Dark blue
Blu scuro
PANTONE 539 U



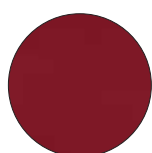
AZ1
Light blue
Azzurro
PANTONE 5503 U



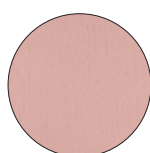
VE2
Dark green
Verde scuro
PANTONE 342 U



VE1
Light green
Verde chiaro
PANTONE 556 U



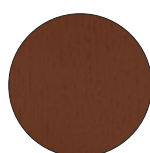
RB
Ruby red
Rosso rubino
PANTONE 1805 U



RA
Pink
Rosa
PANTONE 693 U



MO
Mahogany
Mogano
PANTONE 7603 U

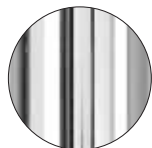


MC
Cognac
Cognac
PANTONE 1675 U

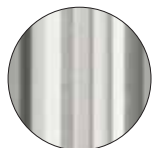
Colours are indicative. Pedrali reserves the right to modify or upgrade the product without prior notice.
I colori sono indicativi. Pedrali si riserva la facoltà di apportare modifiche o migliorie senza alcun preavviso.

Finishes / Finiture

Steel and stainless steel / Acciaio e acciaio inox



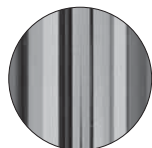
CR
Chromed steel
Acciaio cromato



ST
Satinized steel
Acciaio satinato



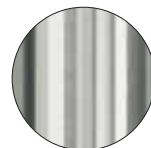
CO
Matt chromed steel
Acciaio cromato opaco



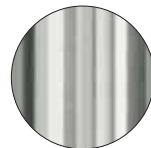
CN
Black chromed steel
Acciaio cromato nero



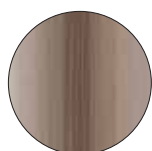
LU
Polished s/steel
Acciaio inox lucidato



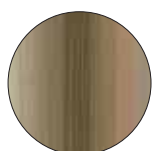
AC
Brushed s/steel
Acciaio inox satinato



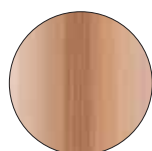
AC 316
Brushed s/steel AISI 316
for outdoor
Acciaio inox AISI 316 per
esterno



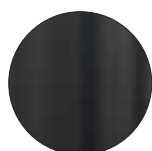
BS
Antique bronze steel
Acciaio bronzo anticato



OA
Antique brass steel
Acciaio ottone anticato

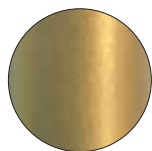


RM
Antique copper steel
Acciaio rame anticato



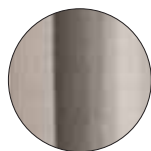
TN
Titanium steel
Acciaio finitura titanio

Gold lacquered / Laccato oro



VOR

Nickel / Nichel

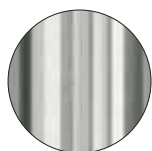


AS
Brushed nickel
Nichel satinato

Aluminium / Alluminio



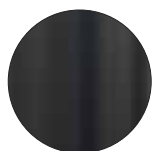
LU
Polished aluminium
Alluminio lucidato



AS
Satinized aluminium
Alluminio satinato



AA
Anodized aluminium
Alluminio anodizzato

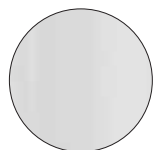


TN
Titanium
Titanio

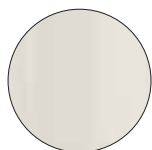
Colours are indicative. Pedrali reserves the right to modify or upgrade the product without prior notice.
I colori sono indicativi. Pedrali si riserva la facoltà di apportare modifiche o migliorie senza alcun preavviso.

Indoor finishes / Finiture per interno

Powder coated cast-iron, steel and aluminium / Ghisa, acciaio e alluminio verniciato



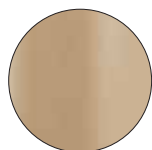
BI100
White,
textured-matt finish
Bianco,
finitura goffrata-opaca



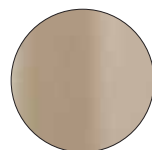
BI200
White,
textured-matt finish
Bianco,
finitura goffrata-opaca



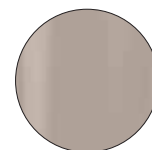
BI300
White,
smooth-matt finish
Bianco,
finitura liscia-opaca



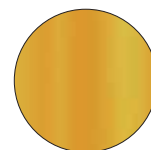
SA100
Sand,
textured-matt finish
Sabbia,
finitura goffrata-opaca



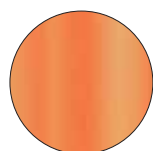
SA200
Sand,
textured-matt finish
Sabbia,
finitura goffrata-opaca



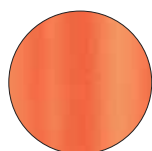
SA300
Sand,
hammered-glossy finish
Sabbia,
finitura bucciata-lucida



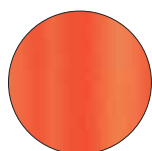
GI100
Yellow,
textured-matt finish
Giallo,
finitura goffrata-opaca



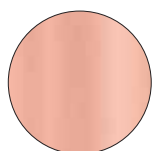
AR200
Orange,
textured-matt finish
Arancio,
finitura goffrata-opaca



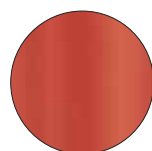
AR500
Orange,
textured-matt finish
Arancio,
finitura goffrata-opaca



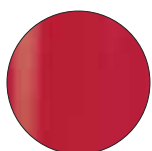
AR400
Orange,
textured-matt finish
Arancio,
finitura goffrata-opaca



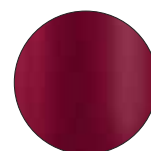
RA100
Pink,
textured-matt finish
Rosa,
finitura goffrata-opaca



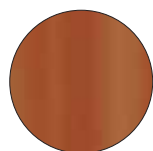
RO400
Red,
textured-matt finish
Rosso,
finitura goffrata-opaca



RO200
Red,
textured-matt finish
Rosso,
finitura goffrata-opaca



RO300
Red,
textured-matt finish
Rosso,
finitura goffrata-opaca



TE
Terracotta,
textured-matt finish
Terracotta,
finitura goffrata-opaca



RU
Rust,
textured-matt finish
Ruggine,
finitura goffrata-opaca

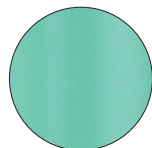


MG
Brown,
textured-matt finish
Marrone,
finitura goffrata-opaca

Colours are indicative. Pedrali reserves the right to modify or upgrade the product without prior notice.
I colori sono indicativi. Pedrali si riserva la facoltà di apportare modifiche o migliorie senza alcun preavviso.

Indoor finishes / Finiture per interno

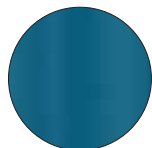
Powder coated cast-iron, steel and aluminium / Ghisa, acciaio e alluminio verniciato



AZ100
Light blue,
textured-matt finish
Azzurro,
finitura goffrata-opaca



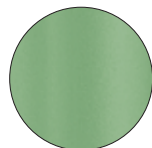
BL500
Blue,
textured-matt finish
Blu,
finitura goffrata-opaca



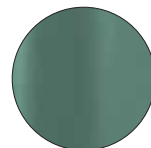
BL300
Blue,
textured-matt finish
Blu,
finitura goffrata-opaca



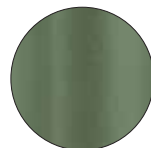
BL400
Blue,
textured-matt finish
Blu,
finitura goffrata-opaca



VE100
Sage green,
textured-matt finish
Verde salvia,
finitura goffrata-opaca



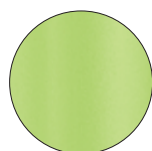
VE600
Green,
textured-matt finish
Verde,
finitura goffrata-opaca



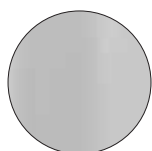
VE300
Forest green soft-touch,
smooth-matt finish
Verde bosco soft-touch,
finitura liscia-opaca



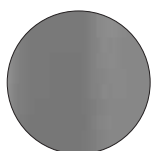
6005
Green,
smooth-glossy finish
Verde,
finitura liscia-lucida



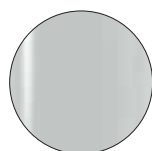
VE400
Green,
textured-matt finish
Verde,
finitura goffrata-opaca



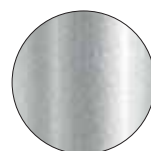
BE100
Beige,
textured-matt finish
Beige,
finitura goffrata-opaca



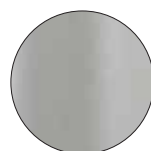
BE200
Beige,
textured-matt finish
Beige,
finitura goffrata-opaca



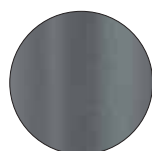
AL
Aluminium,
smooth-glossy finish
Alluminio,
finitura liscia-lucida



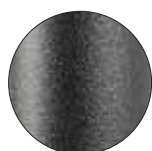
9007
Aluminium,
smooth-matt finish
Alluminio,
finitura liscia-opaca



AG
Aluminium,
textured-matt finish
Alluminio,
finitura goffrata-opaca



GA
Anthracite grey,
textured-matt finish
Grigio antracite,
finitura goffrata-opaca



GN
Natural grey,
textured-matt finish
Grigio naturale,
finitura goffrata-opaca



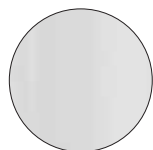
_NERO
Black,
hammered-matt finish
Nero,
finitura bucciata-opaca

Colours are indicative. Pedrali reserves the right to modify or upgrade the product without prior notice.
I colori sono indicativi. Pedrali si riserva la facoltà di apportare modifiche o migliorie senza alcun preavviso.

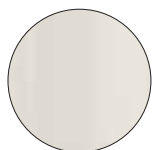
Outdoor finishes / Finiture per esterno



Powder coated cast-iron, steel and aluminium / Ghisa, acciaio e alluminio verniciato



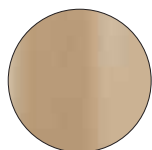
BI100E
White,
textured-matt finish
Bianco,
finitura goffrata-opaca



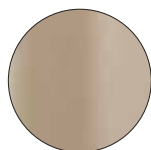
BI200E
White,
textured-matt finish
Bianco,
finitura goffrata-opaca



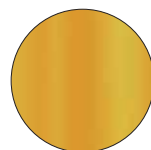
BI300E
White,
smooth-matt finish
Bianco,
finitura liscia-opaca



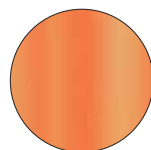
SA100E
Sand,
textured-matt finish
Sabbia,
finitura goffrata-opaca



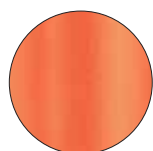
SA200E
Sand,
textured-matt finish
Sabbia,
finitura goffrata-opaca



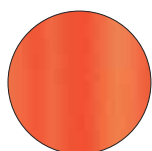
GI100E
Yellow,
textured-matt finish
Giallo,
finitura goffrata-opaca



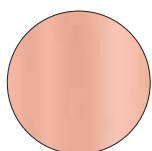
AR200E
Orange,
textured-matt finish
Arancio,
finitura goffrata-opaca



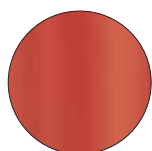
AR500E
Orange,
textured-matt finish
Arancio,
finitura goffrata-opaca



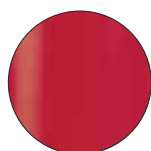
AR400E
Orange,
textured-matt finish
Arancio,
finitura goffrata-opaca



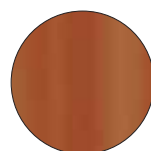
RA100E
Pink,
textured-matt finish
Rosa,
finitura goffrata-opaca



RO400E
Red,
textured-matt finish
Rosso,
finitura goffrata-opaca



RO200E
Red,
textured-matt finish
Rosso,
finitura goffrata-opaca



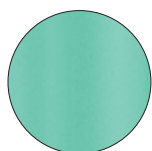
TEE
Terracotta,
textured-matt finish
Terracotta,
finitura goffrata-opaca



RUE
Rust,
textured-matt finish
Ruggine,
finitura goffrata-opaca



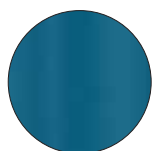
MGE
Brown,
textured-matt finish
Marrone,
finitura goffrata-opaca



AZ100E
Light blue,
textured-matt finish
Azzurro,
finitura goffrata-opaca



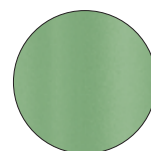
BL500E
Blue,
textured-matt finish
Blu,
finitura goffrata-opaca



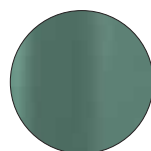
BL300E
Blue,
textured-matt finish
Blu,
finitura goffrata-opaca



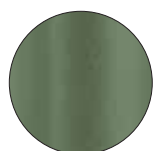
BL400E
Blue,
textured-matt finish
Blu,
finitura goffrata-opaca



VE100E
Sage green,
textured-matt finish
Verde salvia,
finitura goffrata-opaca



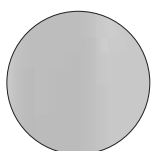
VE600E
Green,
textured-matt finish
Verde,
finitura goffrata-opaca



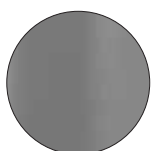
VE300E
Forest green soft-touch,
smooth-matt finish
Verde bosco soft-touch,
finitura liscia-opaca



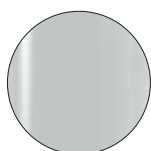
6005E
Green,
smooth-glossy finish
Verde,
finitura liscia-lucida



BE100E
Beige,
textured-matt finish
Beige,
finitura goffrata-opaca



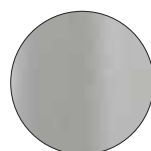
BE200E
Beige,
textured-matt finish
Beige,
finitura goffrata-opaca



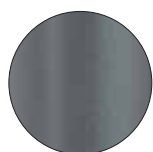
ALE
Aluminium,
smooth-glossy finish
Alluminio,
finitura liscia-lucida



9007E
Aluminium,
smooth-matt finish
Alluminio,
finitura liscia-opaca



AGE
Aluminium,
textured-matt finish
Alluminio,
finitura goffrata-opaca



GAE
Anthracite grey,
textured-matt finish
Grigio antracite,
finitura goffrata-opaca



GNE
Natural grey,
textured-matt finish
Grigio naturale,
finitura goffrata-opaca

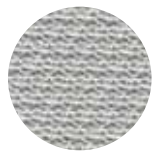


NPE
Black,
textured-matt finish
Nero,
finitura goffrata-opaca

Colours are indicative. Pedrali reserves the right to modify or upgrade the product without prior notice.
I colori sono indicativi. Pedrali si riserva la facoltà di apportare modifiche o migliorie senza alcun preavviso.

Category B

Nylon / Nylon



B01



B02

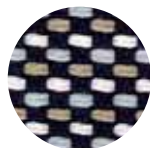
For Island item 795-796-797
Per Island art. 795-796-797

Category C

Fabric / Tessuto



C36



C37



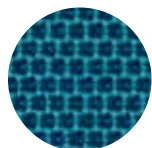
C38



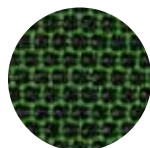
C39

For Arki-Stool, Babila XL, Ikon low stool, Noa, Tweet, Wow, Buddy and the following cushions only:
Social Plus, Blitz, Buddy, Queen, Pasha, Gliss and Ikon bench.
Solo per Arki-Stool, Babila XL, Ikon low stool, Noa, Tweet, Wow, Buddy e per i seguenti cuscini:
Social Plus, Blitz, Buddy, Queen, Pasha, Gliss e Ikon bench

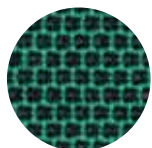
Fire retardant fabric / Tessuto ignifugo



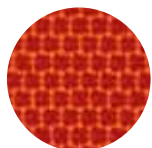
C83



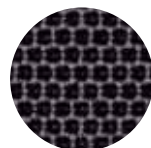
C84



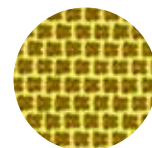
C88



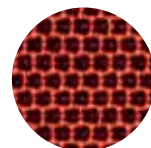
C85



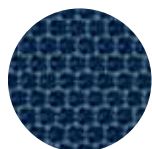
C86



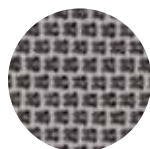
C87



C89



C100

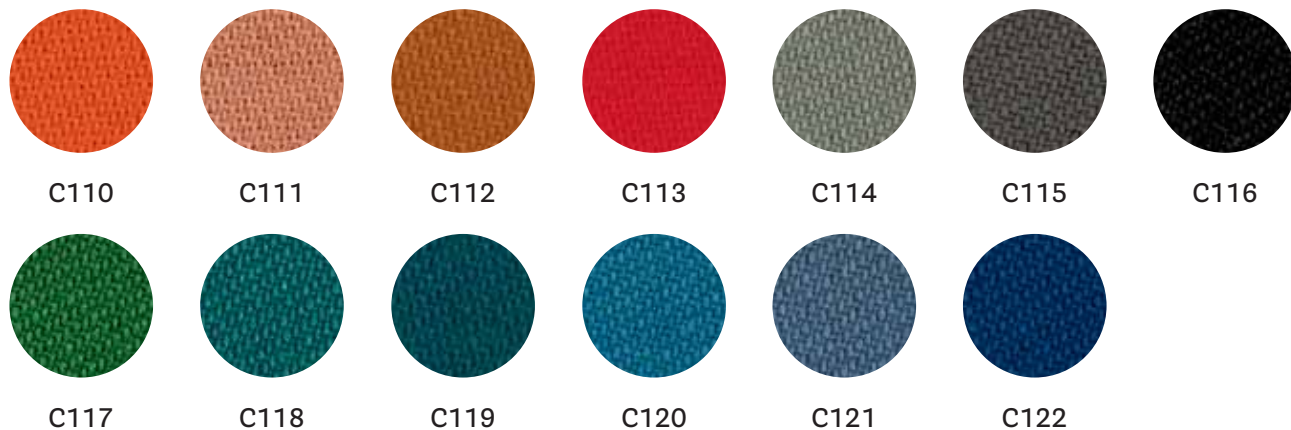


C101

- FLAME RESISTANCE / RESISTENZA AL FUOCO
BS EN 1021 1&2
BS EN 1021-1
ÖNORM A3800-1
US CATB 117-2013



Fire retardant fabric / Tessuto ignifugo

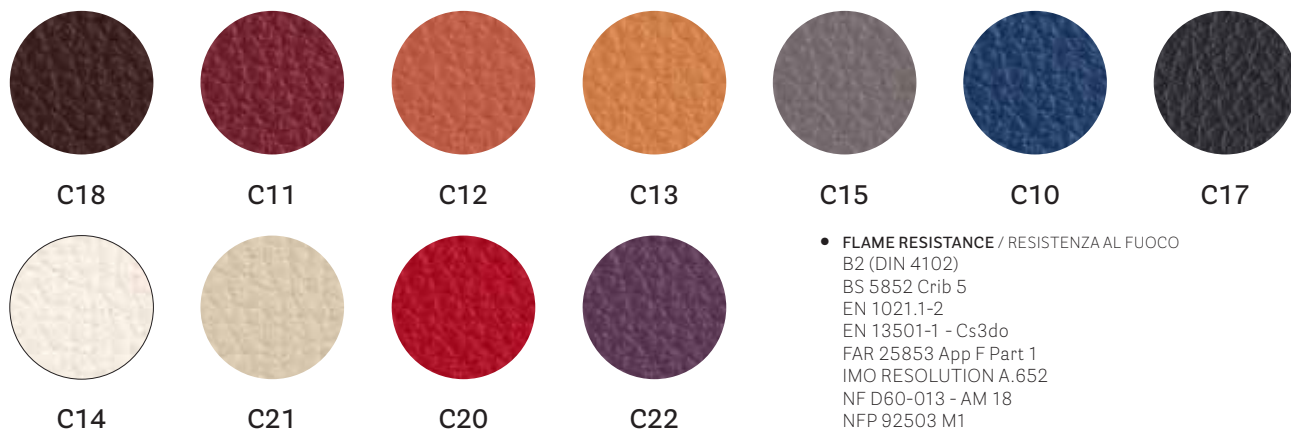


• COLLECTION / COLLEZIONE
svensson-SEMI

• FLAME RESISTANCE / RESISTENZA AL FUOCO
 BS 5852 Crib 5
 EN ISO 1021 Part 1&2
 IMO FTP Code 2010: Part 8
 UNI 9175 Classe 1 IM



Fire retardant simil leather / Finta pelle ignifuga



• FLAME RESISTANCE / RESISTENZA AL FUOCO
 B2 (DIN 4102)
 BS 5852 Crib 5
 EN 1021.1-2
 EN 13501-1 - Cs3do
 FAR 25853 App F Part 1
 IMO RESOLUTION A.652
 NF D60-013 - AM 18
 NFP 92503 M1
 NY/NJ - Port Authority
 UFAC Fabric Class 1
 German fire standard B1 (except C12 and C22)
 US CATB 117
 US CATB 133

Colours are indicative. Pedrali reserves the right to modify or upgrade the product without prior notice.
 I colori sono indicativi. Pedrali si riserva la facoltà di apportare modifiche o migliorie senza alcun preavviso.



Fire retardant simil leather / Finta pelle ignifuga



C130



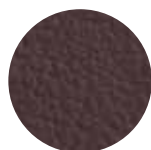
C131



C132



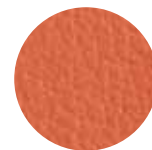
C133



C134



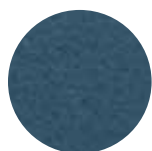
C135



C136



C137



C138



C139



C140



C141

- **FLAME RESISTANCE / RESISTENZA AL FUOCO**
BS 5852-1 match test
EN 1021 Part 1-2
UNI 9175 Classe 1 IM
US CA TB 117-2013



Fire retardant simil leather / Finta pelle ignifuga



C60



C61



C62



C63



C64



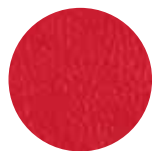
C90



C94



C95



C92



C91



C93

- **FLAME RESISTANCE / RESISTENZA AL FUOCO**
BS 5852-1 Part 1
EN 1021-2
IMO RESOLUTION A.652 (16): 1989
UNI 9175 Classe 1 IM
US CA TB 117-2013



Fire retardant simil leather / Finta pelle ignifuga



C45



C46



C47



C48

- **FLAME RESISTANCE / RESISTENZA AL FUOCO**
BS 5852 Part 1 0,1
EN 1021-1&2
UNI 9175 Classe 1 IM

Simil-leather non-homogenous shade (vintage effect)
Finta pelle in tonalità non omogenea (effetto vintage)

Colours are indicative. Pedrali reserves the right to modify or upgrade the product without prior notice.
I colori sono indicativi. Pedrali si riserva la facoltà di apportare modifiche o migliorie senza alcun preavviso.

Category D

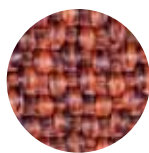
Fabric / Tessuto



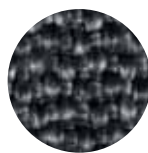
D22



D23



D24



D25



D26

- COLLECTION / COLLEZIONE
PEDRALI® - BREZZA

For cushions Intrigo, Nolita, Panarea, Plus, Plus Air, Rail, Reva, Reva Twist and Sunset.
Per cuscini Intrigo, Nolita, Panarea, Plus, Plus Air, Rail, Reva, Reva Twist e Sunset.

Fabric / Tessuto



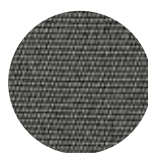
D32



D33



D34



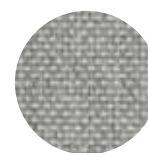
D35



D36



D37



D38



D39



D71

For cushions Intrigo, Nolita, Pasha, Plus, Plus Air, Rail, Reva, Reva Twist and Sunset
Per cuscini Intrigo, Nolita, Pasha, Plus, Plus Air, Rail, Reva, Reva Twist e Sunset

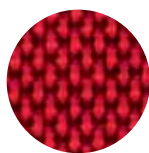
Fire retardant fabric / Tessuto ignifugo



D40



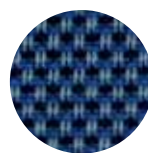
D41



D42



D43



D44

- FLAME RESISTANCE / RESISTENZA AL FUOCO
BS EN 1021 1&2
BS 5852 Part 1 0, 1
UNI 9175 Classe 1 IM
US CA TB 117-2013

Colours are indicative. Pedrali reserves the right to modify or upgrade the product without prior notice.
I colori sono indicativi. Pedrali si riserva la facoltà di apportare modifiche o migliorie senza alcun preavviso.

Category E

Velvet / Velluto



E01



E06



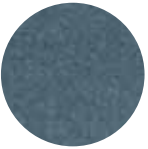
E02



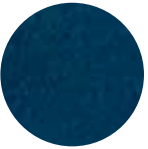
E07



E08



E04



E03



E05



E09

• COLLECTION / COLLEZIONE
DEDAR - ADAMO & EVA

Category F

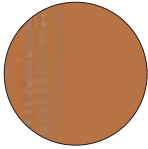
Genuine leather / Cuoio naturale



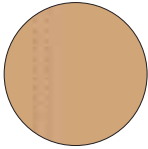
F05



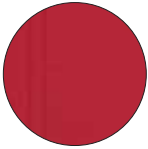
F01



F04



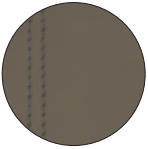
F03



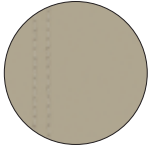
F06



F07



F08



F09

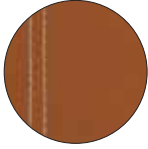
Regenerated leather / Cuoio rigenerato



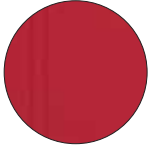
F11



F12



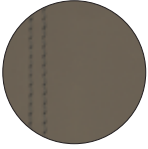
F13



F17



F18



F19

Colours are indicative. Pedrali reserves the right to modify or upgrade the product without prior notice.
I colori sono indicativi. Pedrali si riserva la facoltà di apportare modifiche o migliorie senza alcun preavviso.

Category G

Fire retardant wool / Lana ignifuga



G21



G22



G23



G24



G25

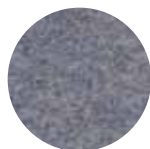
- COLLECTION / COLLEZIONE
kvadrat - DIVINA MELANGE
DESIGNER Finn Skødt

- FLAME RESISTANCE / RESISTENZA AL FUOCO
AS/NZS 1530.3
BS 5852 Crib 5
BS 5852 Part 1
BS 5867 part 2 type B
EN 1021-1/2
EN 13501, C-s1, d0, glued
GB 50222 B1 with treatment
IMO FTP Code 2010: Part 8
NF D60-013
NFPA 260
ÖNORM B1/ Q1
SN 198 898 5.3 with treatment
UNI 9175 Classe 1 IM
US CA TB 117-2013

Fire retardant wool / Lana ignifuga



G110



G111



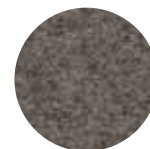
G112



G113



G114



G115

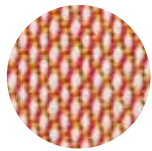


G116

- COLLECTION / COLLEZIONE
kvadrat - DIVINA MD
DESIGNER Finn Skødt

- FLAME RESISTANCE / RESISTENZA AL FUOCO
AS/NZS 1530.3
BS 5852 Crib 5
BS 5852 Part 1
BS 5867 part 2 type B
EN 1021-1/2
EN 13501, C-s1, d0, glued
GB 50222 B1 with treatment
IMO FTP Code 2010: Part 8
NF D60-013
NFPA 260
ÖNORM B1/ Q1
SN 198 898 5.3 with treatment
UNI 9175 Classe 1 IM
US CA TB 117-2013

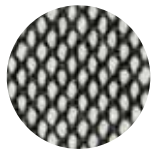
Colours are indicative. Pedrali reserves the right to modify or upgrade the product without prior notice.
I colori sono indicativi. Pedrali si riserva la facoltà di apportare modifiche o migliorie senza alcun preavviso.



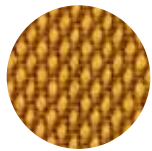
G59



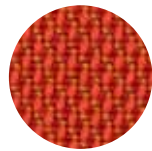
G66



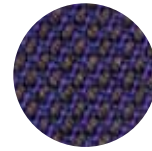
G63



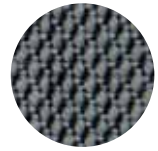
G67



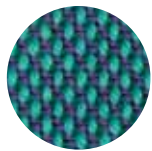
G69



G61



G62



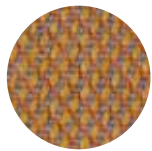
G68



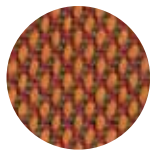
G64



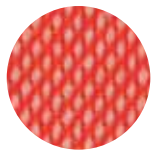
G65



G190



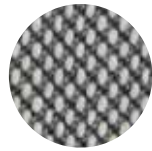
G191



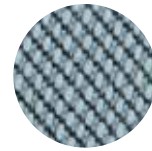
G192



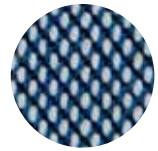
G193



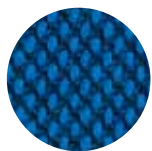
G194



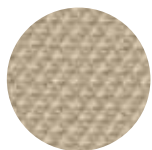
G195



G196



G197



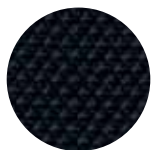
G71



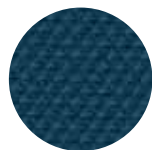
G72



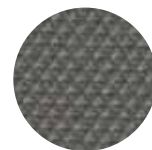
G74



G70



G75



G73



G78

• COLLECTION / COLLEZIONE

kvadrat

STEELCUT TRIO

G59÷G69; G190÷G197

STEELCUT

G70÷G78

DESIGNER Dijkmeijer & Ridolfo

• FLAME RESISTANCE / RESISTENZA AL FUOCO

AS/NZS 1530.3

BS 5852 Part 1

BS 5852 Crib 5 with treatment

EN 1021 - 1/2

IMO FTP Code 2010: Part 8

NF D60-013

NFPA 260

SN 198 898 5.3 with treatment

UNI 9175 Classe 1 IM

US CATB 117-2013

for G59÷G69; G190÷G197:

AS/NZS 3837 Class 2

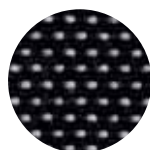
BS 5852 IGNITION SOURCE 3

GB 50222 B1 with treatment

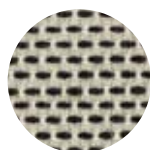
ÖNORM B1/Q1



Fire retardant fabric / Tessuto ignifugo



G100



G101



G102

- COLLECTION / COLLEZIONE

kvadrat - BASEL

DESIGNER Herzog & de Meuron

- FLAME RESISTANCE / RESISTENZA AL FUOCO

AS/NZS 3837 Class 2
 BS 5852 Part 1
 BS 5852 Crib 5 with treatment
 EN 1021 - 1/2
 GB 50222 B1 with treatment
 IMO FTP Code 2010: Part 8

NFPA 260
 NF D60-013
 ÖNORM B1/Q1
 SN 198 898 5.3 with treatment
 UNI 9175 Classe 1 IM
 US CA TB 117-2013



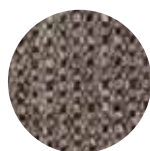
Fire retardant fabric / Tessuto ignifugo



G120



G121



G122

- COLLECTION / COLLEZIONE

kvadrat - MOLLY

DESIGNER Åsa Pärson

- FLAME RESISTANCE / RESISTENZA AL FUOCO

BS 5852 Part 1
 BS 5852 Crib 5 with treatment
 EN 1021 - 1/2
 IMO FTP Code 2010: Part 8

NFPA 260
 NF D60-013
 ÖNORM B1/Q1
 UNI 9175 Classe 1 IM
 US CA TB 117-2013



Fire retardant fabric / Tessuto ignifugo



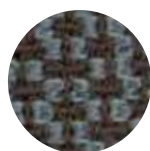
G130



G131



G132



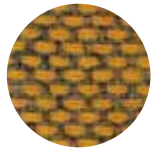
G133

- FLAME RESISTANCE / RESISTENZA AL FUOCO

BS 5852:1979 (Part 1)
 BS 5852:2006 (Part 2) Crib 5
 DIN 4102-1 B2
 EN 1021 -1 and -2
 EN 13501-1
 FAR 25.853 (12 sec. vertical)
 IMO: 2014/90/EU (MED)
 UNI 9175 Classe 1 IM
 US CA TB 117-2013

Colours are indicative. Pedrali reserves the right to modify or upgrade the product without prior notice.
 I colori sono indicativi. Pedrali si riserva la facoltà di apportare modifiche o migliorie senza alcun preavviso.

Fire retardant fabric / Tessuto ignifugo



G140



G141



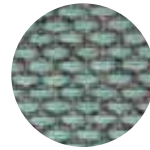
G142



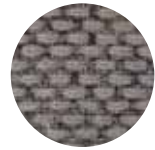
G143



G144



G145



G146

- COLLECTION / COLLEZIONE

kvadrat - RE-WOOL

DESIGNER Margrethe Odgaard

- FLAME RESISTANCE / RESISTENZA AL FUOCO

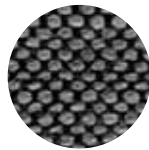
AS/NZS 1530.3
AS/NZS 3837 Class 2
BS 5852 Part 1
BS 5852 Crib 5 with treatment
BS 5852 IGNITION SOURCE 3

EN 1021 - 1/2
IMO FTP Code 2010: Part 8
NF D60-013
ÖNORM B1/Q1
UNI 9175 Classe 1IM
US CA TB 117-2013

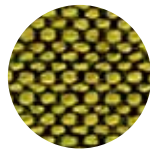
Fire retardant fabric / Tessuto ignifugo



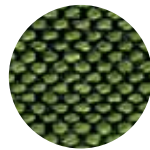
G150



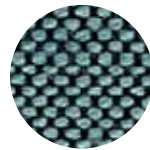
G151



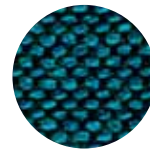
G152



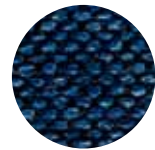
G153



G154



G155



G156

- COLLECTION / COLLEZIONE

svensson - BALANCE

- FLAME RESISTANCE / RESISTENZA AL FUOCO

BS 5852 Crib 5
EN ISO 1021 Part 1&2
IMO FTP Code 2010: Part 8
UNI 9175 Classe 1 IM
US CA TB 117-2013

Fire retardant fabric / Tessuto ignifugo



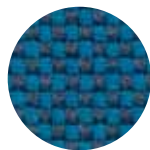
G170



G171



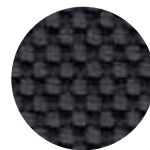
G172



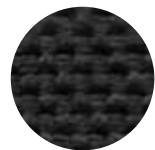
G173



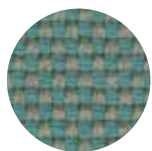
G174



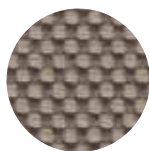
G175



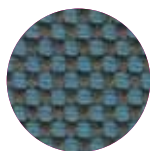
G176



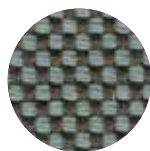
G210



G211



G212



G213

- FLAME RESISTANCE / RESISTENZA AL FUOCO

BS 5852:1979 (Part 1)
BS 5852:2006 (Part 2) Crib 5
DIN 4102-1 B2
EN 13501-1
EN 1021 -1 and -2
FAR 25.853 (12 sec. vertical)
IMO: 2014/90/EU (MED)
UNI 9175 Classe 1 IM
US CA TB 117-2013

Colours are indicative. Pedrali reserves the right to modify or upgrade the product without prior notice.
I colori sono indicativi. Pedrali si riserva la facoltà di apportare modifiche o migliorie senza alcun preavviso.

Fire retardant fabric / Tessuto ignifugo



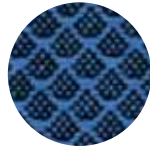
G200



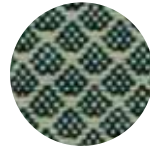
G201



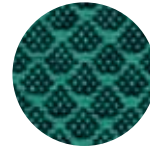
G202



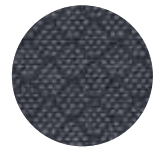
G203



G204



G205



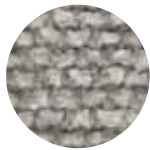
G206

- COLLECTION / COLLEZIONE
kvadrat - JAALI
DESIGNER Doshi Levien

- FLAME RESISTANCE / RESISTENZA AL FUOCO
AS/NZS 1530.3
BS 5852 Part 1
BS 5852 Crib 5 with treatment
BS 5852 IGNITION SOURCE 3
EN 1021-1/2

IMO FTP Code 2010: Part 8
NF D60-013
SN 198 898 5.3 with treatment
UNI 9175 Classe 1IM
US CA TB 117-2013

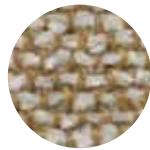
Fire retardant fabric / Tessuto ignifugo



G220



G221



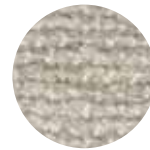
G222



G223



G224

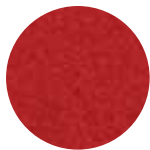


G225

- COLLECTION / COLLEZIONE
kvadrat - SAHCO
MOSS
DESIGNER Vincent Van Duysen

- FLAME RESISTANCE / RESISTENZA AL FUOCO
BS 5852 Part 1
BS 5852 Crib 5 with treatment
EN 1021-1/2

Fire retardant fabric / Tessuto ignifugo



G08



G07



G01



G09

- FLAME RESISTANCE / RESISTENZA AL FUOCO
BS EN 1021 1&2
BS EN 1021-1
ÖNORM A3800-B2-B3825-Q1 UK
NF P 92-503 M3
US CA TB 117-2013

Colours are indicative. Pedrali reserves the right to modify or upgrade the product without prior notice.
I colori sono indicativi. Pedrali si riserva la facoltà di apportare modifiche o migliorie senza alcun preavviso.

Fire retardant fabric / Tessuto ignifugo



G160



G161



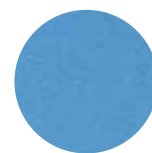
G162



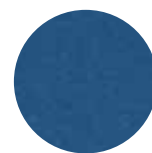
G163



G164



G165



G166



G167



G168

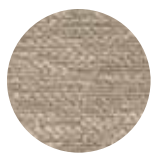


G169

• COLLECTION / COLLEZIONE
kvadrat - HERO
DESIGNER Patricia Urquiola

• FLAME RESISTANCE /
RESISTENZA AL FUOCO
AS/NZS 3837 Class 2
BS 5852 Crib 5 with treatment
BS 5852 Part 1
EN 1021 - 1/2
IMO FTP Code 2010: Part 7
with treatment
IMO FTP Code 2010: Part 8
NF D60-013
SN 198 898 5.3 with treatment
UNI 9175 Classe 1 IM
US CA TB 117-2013

Fire retardant velvet / Velluto ignifugo



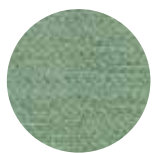
G180



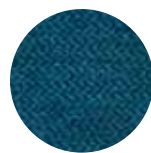
G181



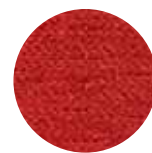
G182



G183



G184



G185

• COLLECTION / COLLEZIONE
kvadrat - STILL
DESIGNER Georgina Wright

• FLAME RESISTANCE / RESISTENZA AL FUOCO
ASTM E84 Class A
BS 5852 Crib 5
BS 5852 Part 1
BS 5867 Part 2 type B
DIN 4102 B1
EN 1021-1/2
EN 13501-1, B-s1, d0
IMO FTP Code 2010: Part 8
NF D60-013
NF P92 507 M1
NFPA 701
ÖNORM B1/Q1
SN 198 898 5.2
UNI 9175 Classe 1 IM
UNI 9177 Classe 1
US CA TB 117-2013

Category H

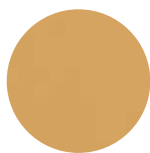
Fire retardant simil leather / Finta pelle ignifuga



H30



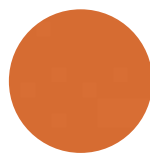
H29



H28



H27



H24



H22



H23



H21



H20



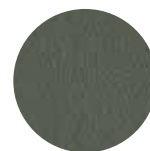
H26



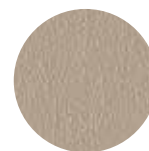
H31



H32



H33



H34



H35



H100



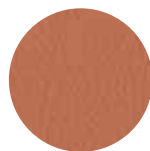
H101



H102



H103



H104



H105



H106



H107



H108

- **FLAME RESISTANCE / RESISTENZA AL FUOCO**
BS 5852 Crib 5
BS 5852 Part 1-2
EN 1021 Part 1-2
IMO resolution FTP Code 2010
IMO resolution A.652 (16):1989
UNI 9175 Classe 1 IM
US CA TB 117-2013

Colours are indicative. Pedrali reserves the right to modify or upgrade the product without prior notice.
I colori sono indicativi. Pedrali si riserva la facoltà di apportare modifiche o migliorie senza alcun preavviso.

Fire retardant simil leather / Finta pelle ignifuga



H80



H81



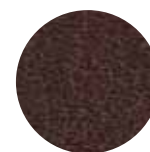
H82



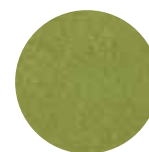
H85



H87



H88



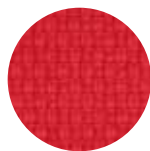
H89

- **FLAME RESISTANCE / RESISTENZA AL FUOCO**
BS 5852-1 cigarette test
BS 5852-1 match test
BS 5852 crib 5
EN 1021-1
EN 1021-2
IMO FTP CODE 2010
TB 117:2013
UNI 9175 classe 1IM

Fire retardant fabric / Tessuto ignifugo



H60

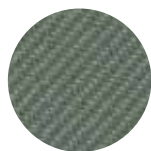


H61

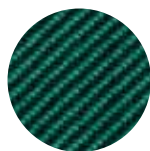
- **FLAME RESISTANCE / RESISTENZA AL FUOCO**
BS EN 1021 1&2
BS EN 1021-1
BS 5852 Part 1 0, 1
UNI 9175 Classe 1 IM
US CA TB 117-2013



Fire retardant fabric / Tessuto ignifugo



H110



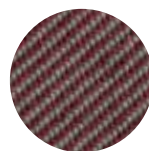
H111



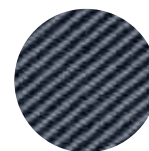
H112



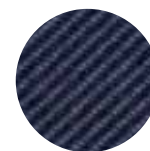
H113



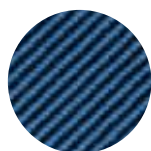
H114



H115



H116



H117

• COLLECTION / COLLEZIONE
kvadrat - RELATE
DESIGNER Patricia Urquiola

• FLAME RESISTANCE / RESISTENZA AL FUOCO
AS/NZS 3837, class 2
BS 5852 Crib 5
BS 5852 Part 1 with treatment
DIN 4102 B1
EN 1021-1/2
IMO FTP Code 2010: Part 8
NF D60-013
NF P92 507 M1
NFPA 701
ÖNORM B1/Q1
SN 198 898 5.2
UNI 9177 Classe 1
US CA TB 117-2013



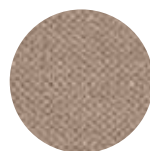
Fire retardant velvet / Velluto ignifugo



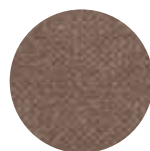
H41



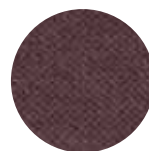
H40



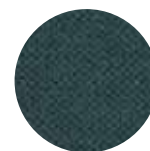
H44



H45



H46



H51



H53



H52



H42



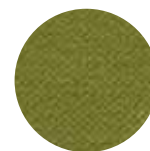
H47



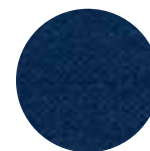
H48



H43



H49



H50

• FLAME RESISTANCE / RESISTENZA AL FUOCO
BS 5852 Part 0,1
DIN 4102 B1
EN 1021-1&2
IMO MSC 307(88) Annex 1 Part 7-8
NF P 92-503-507 M1
NFPA 260:2019
UNI 9177 Classe 1
UNI 9175 Classe 1 IM
US CATB 117-2013

Colours are indicative. Pedrali reserves the right to modify or upgrade the product without prior notice.
I colori sono indicativi. Pedrali si riserva la facoltà di apportare modifiche o migliorie senza alcun preavviso.

Category N

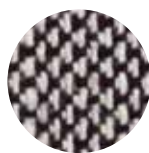
Fire retardant fabric / Tessuto ignifugo



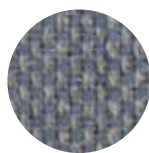
N06



N07



N05



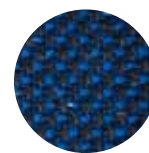
N08



N01



N02



N03



N04

• COLLECTION / COLLEZIONE
kvadrat - SUNNIVA
DESIGNER Raf Simons & Fanny Aronsen

• FLAME RESISTANCE / RESISTENZA AL FUOCO
AS/NZS 3837, class 2
BS 5852 Part 1 with treatment
BS 5852 Crib 5 with treatment
EN 1021 – 1/2
NFPA 260
US CA TB 117-2013
for N01, N02, N05+N08:
IMO FTP Code 2020: Part 8 with treatment
for N03, N04:
DIN 4102 B2

Fire retardant velvet / Velluto ignifugo



N20



N21



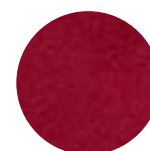
N22



N23



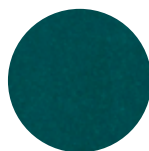
N24



N25



N26



N27

• COLLECTION / COLLEZIONE
kvadrat - SAHCO
BALBOA
DESIGNER Najberg

• FLAME RESISTANCE / RESISTENZA AL FUOCO
BS 5852 Crib 5
BS 5867 Part 2 Type B
DIN 4102 B1
EN 1021-1/2
IMO FTP Code 2010: Part 8
NFPA 701
ÖNORM B1/Q1
SN 198 898 5.2
UNI 9175 11M
US CA TB 117-2013

Category P

Mid grain leather / Pelle mezzo fiore



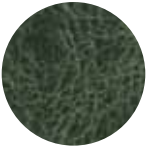
						
PBI	PLA	PSA	PGC	PGA	PGR	PBE
						
PTA	PMA	PNE	PRO	PTE	PGN	

- COLLECTION / COLLEZIONE  LINEA
- FLAME RESISTANCE / RESISTENZA AL FUOCO
BS 5852:1979
BS EN 1021-1-2:2006
IMO RES A652 (16)

Perforated mid grain leather / Pelle mezzo fiore traforata

				<ul style="list-style-type: none"> • COLLECTION / COLLEZIONE  LINEA • FLAME RESISTANCE / RESISTENZA AL FUOCO BS 5852:1979 BS EN 1021-1-2:2006 IMO RES A652 (16)
PGCF	PGRF	PMAF	PTEF	<p>For Vic and Vic Metal Per Vic e Vic Metal</p>

Mid grain leather / Pelle mezzo fiore

				<ul style="list-style-type: none"> • COLLECTION / COLLEZIONE  TUSCANIA • FLAME RESISTANCE / RESISTENZA AL FUOCO BS 5852:1979 BS EN 1021-1-2:2006
PBS	PCO	PMS	PVE	<p>For Malmö 296, 391, 396, 242 and 246 Per Malmö 296, 391, 396, 242 e 246</p>

Colours are indicative. Pedrali reserves the right to modify or upgrade the product without prior notice.
I colori sono indicativi. Pedrali si riserva la facoltà di apportare modifiche o migliorie senza alcun preavviso.