



HORM



CASAMANIA

Tessuti ed Ecopelle Nuance v.01

versione 27/04/2023

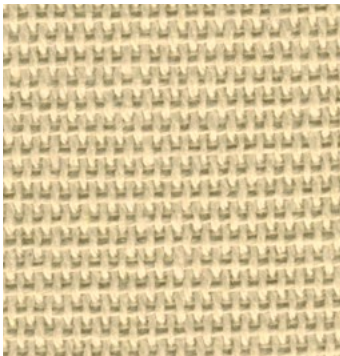


HORM



CASAMANIA

/
Collezione Nuance v.01
 Categoria Prezzo **Basic**



ORCHID 342 002
 75% CO - 25% PL
 GR / ML 652
 MARTINDALE 20.000



PANAREA L1460 01
 100% CO
 GR / ML 390
 MARTINDALE 100.000



PANAREA L1460 02
 100% CO
 GR / ML 390
 MARTINDALE 100.000



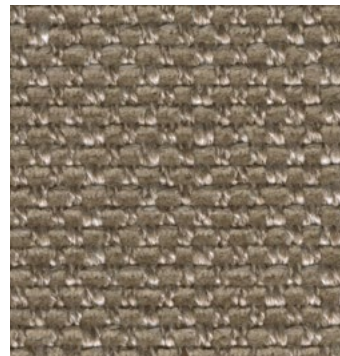
ALFA T/101 34
 30% VI - 24% CO - 24% LI - 22% PL
 GR / ML 620
 MARTINDALE 24.000



MAKKIANO L1542 01
 49% PC - 48% PL - 3% VI
 GR / ML 690
 MARTINDALE 27.000



MAKKIANO L1542 02
 49% PC - 48% PL - 3% VI
 GR / ML 690
 MARTINDALE 27.000



MAKKIANO L1542 03
 49% PC - 48% PL - 3% VI
 GR / ML 690
 MARTINDALE 27.000



MYTO 5113 02
 35% PL - 27% CO - 24% VI - 14% LI
 GR / ML 550
 MARTINDALE 30.000



[CLICCA PER SCARICARE
 LE IMMAGINI JPEG
 DEI TESSUTI](#)



[CLICCA PER SCARICARE
 LE SCHEDE TECNICHE](#)



HORM



CASAMANIA

/
Collezione Nuance v.01
 Categoria Prezzo **Basic**



MYTO 5113 03
 35% PL - 27% CO - 24% VI - 14% LI
 GR / ML 550
 MARTINDALE 30.000



ORCHID 342 003
 75% CO - 25% PL
 GR / ML 652
 MARTINDALE 20.000



ORCHID 342 007
 75% CO - 25% PL
 GR / ML 652
 MARTINDALE 20.000



ORCHID 342 010
 75% CO - 25% PL
 GR / ML 652
 MARTINDALE 20.000



PANAREA L1460 03
 100% CO
 GR / ML 390
 MARTINDALE 100.000



PANAREA L1460 05
 100% CO
 GR / ML 390
 MARTINDALE 100.000



PHILL 5123 807
 32% PL - 52% PP - 10% VI - 6% LI
 GR / ML 530
 MARTINDALE 18.000



MAKKIANO L1542 05
 49% PC - 48% PL - 3% VI
 GR / ML 690
 MARTINDALE 27.000





HORM



CASAMANIA

4

/ Collezione Nuance v.01

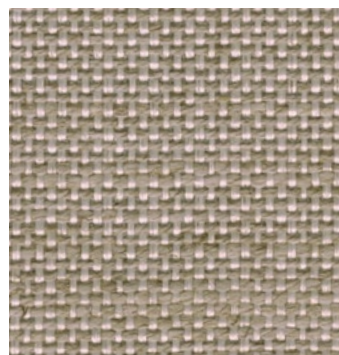
Categoria Prezzo **Basic**



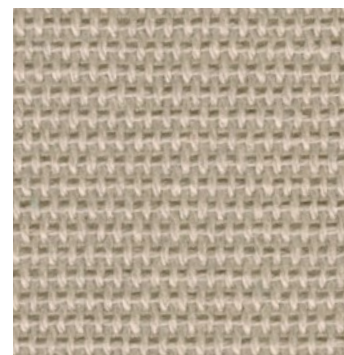
MAKKIANO L1542 06
49% PC - 48% PL - 3% VI
GR / ML 690
MARTINDALE 27.000



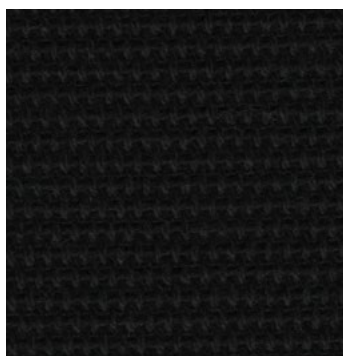
MYTO 5113 08
35% PL - 27% CO - 24% VI - 14% LI
GR / ML 550
MARTINDALE 30.000



MYTO 5113 13
35% PL - 27% CO - 24% VI - 14% LI
GR / ML 550
MARTINDALE 30.000



ORCHID 342 005
75% CO - 25% PL
GR / ML 652
MARTINDALE 20.000



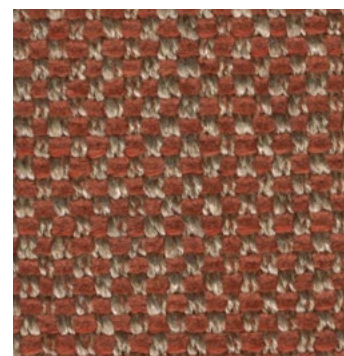
ORCHID 342 011
75% CO - 25% PL
GR / ML 652
MARTINDALE 20.000



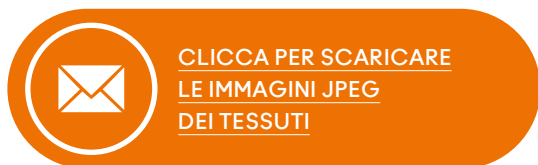
PANAREA L1460 17
100% CO
GR / ML 390
MARTINDALE 100.000



PHILL 5123 809
32% PL - 52% PP - 10% VI - 6% LI
GR / ML 530
MARTINDALE 18.000



MAKKIANO L1542 08
49% PC - 48% PL - 3% VI
GR / ML 690
MARTINDALE 27.000



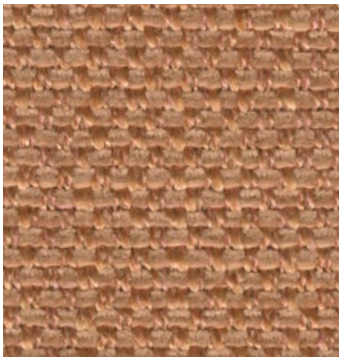


HORM

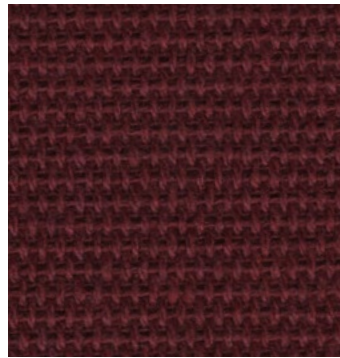


CASAMANIA

/
Collezione Nuance v.01
 Categoria Prezzo **Basic**



MAKKIANO L1542 09
 49% PC - 48% PL - 3% VI
 GR / ML 690
 MARTINDALE 27.000



ORCHID 342 012
 75% CO - 25% PL
 GR / ML 652
 MARTINDALE 20.000



ORCHID 342 013
 75% CO - 25% PL
 GR / ML 652
 MARTINDALE 20.000



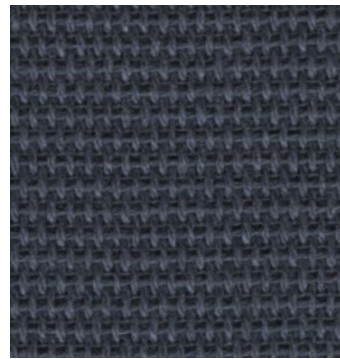
PANAREA L1460 24
 100% CO
 GR / ML 390
 MARTINDALE 100.000



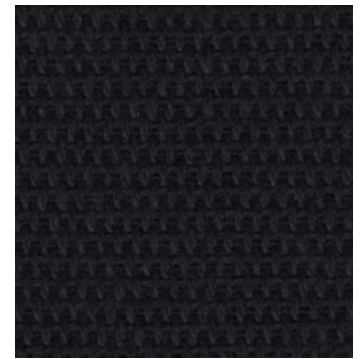
PANAREA L1460 25
 100% CO
 GR / ML 390
 MARTINDALE 100.000



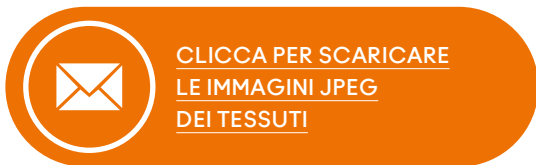
ORCHID 342 018
 75% CO - 25% PL
 GR / ML 652
 MARTINDALE 20.000



ORCHID 342 020
 75% CO - 25% PL
 GR / ML 652
 MARTINDALE 20.000



ORCHID 342 021
 75% CO - 25% PL
 GR / ML 652
 MARTINDALE 20.000





HORM



CASAMANIA

6

/ Collezione Nuance v.01

Categoria Prezzo **Basic**



PANAREA L1460 13
100% CO
GR / ML 390
MARTINDALE 100.000



PANAREA L1460 14
100% CO
GR / ML 390
MARTINDALE 100.000



[CLICCA PER SCARICARE
LE IMMAGINI JPEG
DEI TESSUTI](#)



[CLICCA PER SCARICARE
LE SCHEDE TECNICHE](#)



HORM

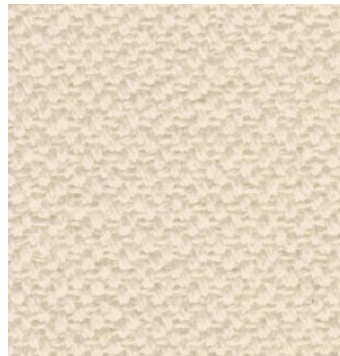


CASAMANIA

/
Collezione Nuance v.01
 Categoria Prezzo **Superior**



GIZA L1424 01
 54% JU - 46% LI
 GR / ML 680
 MARTINDALE 22.000



MIMOSA 436 001
 80% CO - 20% PL
 GR / ML 820
 MARTINDALE 30.000



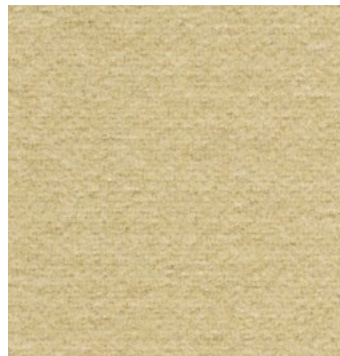
MIMOSA 436 002
 80% CO - 20% PL
 GR / ML 820
 MARTINDALE 30.000



MIMOSA 436 003
 80% CO - 20% PL
 GR / ML 820
 MARTINDALE 30.000



TULIP 444 001
 80% CO - 20% PL
 GR / ML 820
 MARTINDALE 25.000



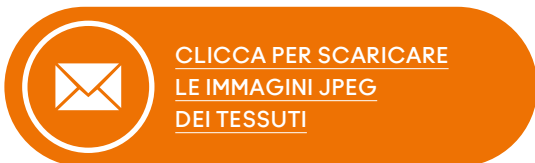
BLOOM T7787 01
 80% CO - 12% PC - 8% AF
 GR / ML 630
 MARTINDALE 28.000



BLOOM T7787 02
 80% CO - 12% PC - 8% AF
 GR / ML 630
 MARTINDALE 28.000



BLOOM T7787 04
 80% CO - 12% PC - 8% AF
 GR / ML 630
 MARTINDALE 28.000





HORM



CASAMANIA

/
Collezione Nuance v.01
 Categoria Prezzo **Superior**



CALLA 402 005
 80% WO - 20% NY
 GR / ML 675
 MARTINDALE 100.000



CALLA 402 011
 80% WO - 20% NY
 GR / ML 675
 MARTINDALE 100.000



GIZA L1424 19
 54% JU - 46% LI
 GR / ML 680
 MARTINDALE 22.000



GIZA L1424 22
 54% JU - 46% LI
 GR / ML 680
 MARTINDALE 22.000



LINARA WASHED T/093 16
 100% LI
 GR / ML 520
 MARTINDALE 22.000



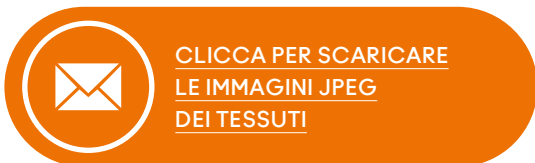
MIMOSA 436 004
 80% CO - 20% PL
 GR / ML 820
 MARTINDALE 30.000



MIMOSA 436 006
 80% CO - 20% PL
 GR / ML 820
 MARTINDALE 30.000



SONG T/172 2
 30% LI - 70% VI
 GR / ML 700
 MARTINDALE 33.000





HORM

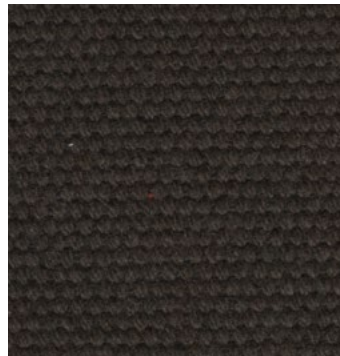


CASAMANIA

/
Collezione Nuance v.01
 Categoria Prezzo **Superior**



TULIP 444 003
 80% CO - 20% PL
 GR / ML 820
 MARTINDALE 25.000



TULIP 444 005
 80% CO - 20% PL
 GR / ML 820
 MARTINDALE 25.000



TULIP 444 025
 80% CO - 20% PL
 GR / ML 820
 MARTINDALE 25.000



BLOOM T7787 06
 80% CO - 12% PC - 8% AF
 GR / ML 630
 MARTINDALE 28.000



BLOOM T7787 08
 80% CO - 12% PC - 8% AF
 GR / ML 630
 MARTINDALE 28.000



BLOOM T7787 09
 80% CO - 12% PC - 8% AF
 GR / ML 630
 MARTINDALE 28.000



CALLA 402 009
 80% WO - 20% NY
 GR / ML 675
 MARTINDALE 100.000



GIZA L1424 18
 54% JU - 46% LI
 GR / ML 680
 MARTINDALE 22.000



[CLICCA PER SCARICARE
 LE IMMAGINI JPEG
 DEI TESSUTI](#)



[CLICCA PER SCARICARE
 LE SCHEDE TECNICHE](#)



HORM



CASAMANIA

/
Collezione Nuance v.01
 Categoria Prezzo **Superior**



IRIS 474 001
 70% WO - 20% PL - 5% PA - 5% PC
 GR / ML 540
 MARTINDALE 40.000



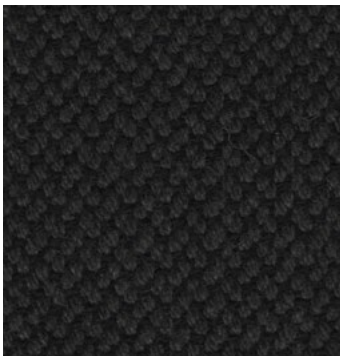
IRIS 474 004
 70% WO - 20% PL - 5% PA - 5% PC
 GR / ML 540
 MARTINDALE 40.000



IRIS 474 005
 70% WO - 20% PL - 5% PA - 5% PC
 GR / ML 540
 MARTINDALE 40.000



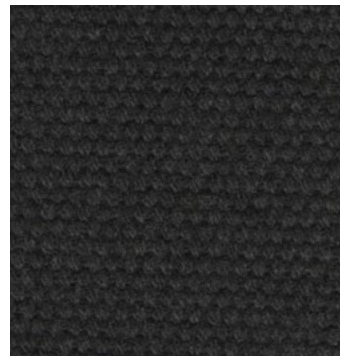
MIMOSA 436 010
 80% CO - 20% PL
 GR / ML 820
 MARTINDALE 30.000



MIMOSA 436 011
 80% CO - 20% PL
 GR / ML 820
 MARTINDALE 30.000



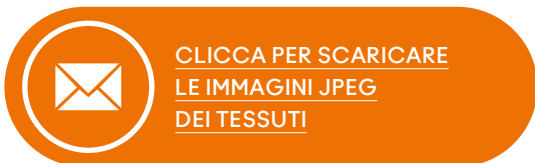
SONG T/172 3
 30% LI - 70% VI
 GR / ML 700
 MARTINDALE 33.000



TULIP 444 006
 80% CO - 20% PL
 GR / ML 820
 MARTINDALE 25.000



TULIP 444 022
 80% CO - 20% PL
 GR / ML 820
 MARTINDALE 25.000





HORM



CASAMANIA

/
Collezione Nuance v.01
 Categoria Prezzo **Superior**



BLOOM T7787 19
 80% CO - 12% PC - 8% AF
 GR / ML 630
 MARTINDALE 28.000



BLOOM T7787 20
 80% CO - 12% PC - 8% AF
 GR / ML 630
 MARTINDALE 28.000



BLOOM T7787 21
 80% CO - 12% PC - 8% AF
 GR / ML 630
 MARTINDALE 28.000



IRIS 474 019
 70% WO - 20% PL - 5% PA - 5% PC
 GR / ML 540
 MARTINDALE 40.000



IRIS 474 020
 70% WO - 20% PL - 5% PA - 5% PC
 GR / ML 540
 MARTINDALE 40.000



BLOOM T7787 02
 80% CO - 12% PC - 8% AF
 GR / ML 630
 MARTINDALE 28.000



BLOOM T7787 17
 80% CO - 12% PC - 8% AF
 GR / ML 630
 MARTINDALE 28.000



IRIS 474 010
 70% WO - 20% PL - 5% PA - 5% PC
 GR / ML 540
 MARTINDALE 40.000



[CLICCA PER SCARICARE
 LE IMMAGINI JPEG
 DEI TESSUTI](#)



[CLICCA PER SCARICARE
 LE SCHEDE TECNICHE](#)



HORM



CASAMANIA

12

/
Collezione Nuance v.01
Categoria Prezzo **Superior**



IRIS 474 011
70% WO - 20% PL - 5% PA - 5% PC
GR / ML 540
MARTINDALE 40.000



IRIS 474 012
70% WO - 20% PL - 5% PA - 5% PC
GR / ML 540
MARTINDALE 40.000



[CLICCA PER SCARICARE
LE IMMAGINI JPEG
DEI TESSUTI](#)



[CLICCA PER SCARICARE
LE SCHEDE TECNICHE](#)



HORM



CASAMANIA

/ Collezione Nuance v.01

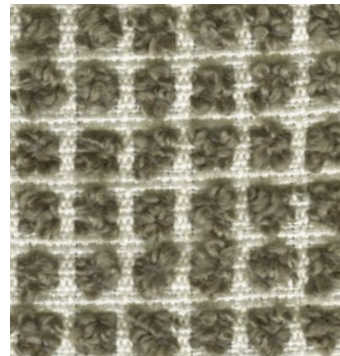
Categoria Prezzo **Top**



BRIONNE 385 012
18% CO - 31% PL - 26% WO - 22% PC - 3% PA
GR / ML 740
MARTINDALE 40.000



CAMELIA 447 1001
48% CO - 15% PL - 37% VI
GR / ML 800
MARTINDALE 25.000



BRIONNE 385 015
18% CO - 31% PL - 26% WO - 22% PC - 3% PA
GR / ML 740
MARTINDALE 40.000



JASMIN 401 001
70% WO - 25% NY - 5% AF
GR / ML 516
MARTINDALE 100.000



CAMELIA 447 1008
48% CO - 15% PL - 37% VI
GR / ML 800
MARTINDALE 25.000



MAGNOLIA 442 002
40% CO - 15% PC - 25% PL - 10% VI - 10% WO
GR / ML 960
MARTINDALE 30.000



DAMA L1522 01
50% CO - 50% MD
GR / ML 620
MARTINDALE 50.000



DAMA L1522 28
50% CO - 50% MD
GR / ML 620
MARTINDALE 50.000



[CLICCA PER SCARICARE
LE IMMAGINI JPEG
DEI TESSUTI](#)



[CLICCA PER SCARICARE
LE SCHEDE TECNICHE](#)



HORM



CASAMANIA

/ Collezione Nuance v.01

Categoria Prezzo **Top**



JASMIN 401033
70% WO - 25% NY - 5% AF
GR / ML 516
MARTINDALE 100.000



JASMIN 401034
70% WO - 25% NY - 5% AF
GR / ML 516
MARTINDALE 100.000



KLEE L1613 01
35% PC - 28% PL - 22% WO - 15% CO
GR / ML 660
MARTINDALE 25.000



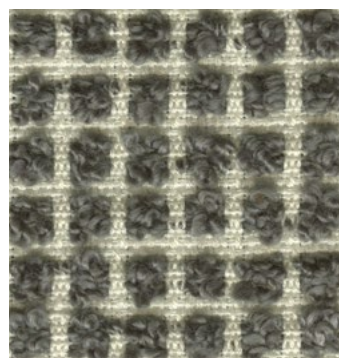
MAGNOLIA 442 004
40% CO - 15% PC - 25% PL - 10% VI - 10% WO
GR / ML 960
MARTINDALE 30.000



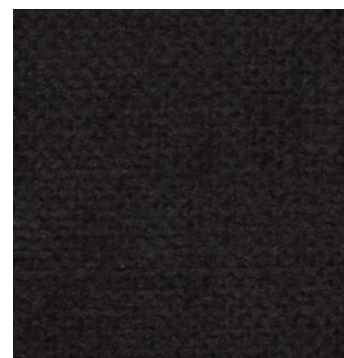
MAGNOLIA 442 014
40% CO - 15% PC - 25% PL - 10% VI - 10% WO
GR / ML 960
MARTINDALE 30.000



SABLE PL689 011
35% CO - 25% VI - 15% LI - 25% PL
GR / ML 865
MARTINDALE 50.000



BRIONNE 385 016
18% CO - 31% PL - 26% WO - 22% PC - 3% PA
GR / ML 740
MARTINDALE 40.000



CAMELIA 447 015
48% CO - 15% PL - 37% VI
GR / ML 800
MARTINDALE 25.000



[CLICCA PER SCARICARE
LE IMMAGINI JPEG
DEI TESSUTI](#)



[CLICCA PER SCARICARE
LE SCHEDE TECNICHE](#)



HORM



CASAMANIA

/
Collezione Nuance v.01
 Categoria Prezzo **Top**



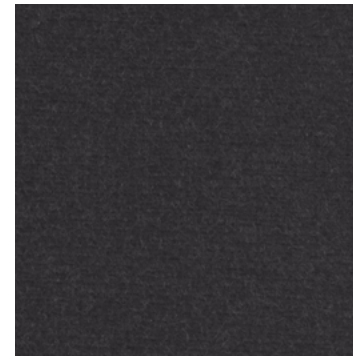
CAMELIA 447 1016
 48% CO - 15% PL - 37% VI
 GR / ML 800
 MARTINDALE 25.000



DAMA L1522 05
 50% CO - 50% MD
 GR / ML 620
 MARTINDALE 50.000



DAMA L1522 20
 50% CO - 50% MD
 GR / ML 620
 MARTINDALE 50.000



DAMA L1522 31
 50% CO - 50% MD
 GR / ML 620
 MARTINDALE 50.000



JASMIN 401 008
 70% WO - 25% NY - 5% AF
 GR / ML 516
 MARTINDALE 100.000



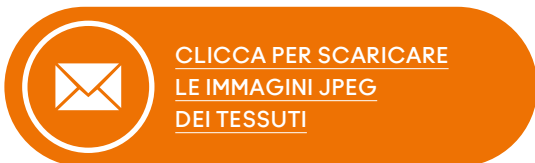
JASMIN 401 010
 70% WO - 25% NY - 5% AF
 GR / ML 516
 MARTINDALE 100.000



KLEE L1613 02
 35% PC - 28% PL - 22% WO - 15% CO
 GR / ML 660
 MARTINDALE 25.000



KLEE L1613 04
 35% PC - 28% PL - 22% WO - 15% CO
 GR / ML 660
 MARTINDALE 25.000





HORM



CASAMANIA

/
Collezione Nuance v.01
 Categoria Prezzo **Top**



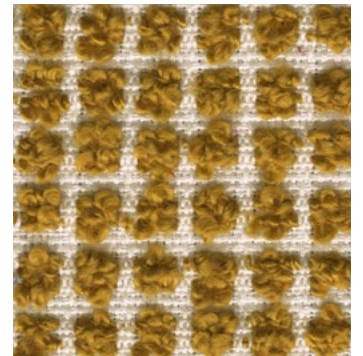
MAGNOLIA 442 012
 40% CO - 15% PC - 25% PL - 10% VI - 10% WO
 GR / ML 960
 MARTINDALE 30.000



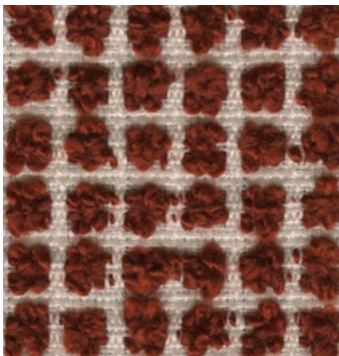
MAGNOLIA 442 013
 40% CO - 15% PC - 25% PL - 10% VI - 10% WO
 GR / ML 960
 MARTINDALE 30.000



SABLE PL689 036
 35% CO - 25% VI - 15% LI - 25% PL
 GR / ML 865
 MARTINDALE 50.000



BRIONNE 385 011
 18% CO - 31% PL - 26% WO - 22% PC - 3% PA
 GR / ML 740
 MARTINDALE 40.000



BRIONNE 385 102
 18% CO - 31% PL - 26% WO - 22% PC - 3% PA
 GR / ML 740
 MARTINDALE 40.000



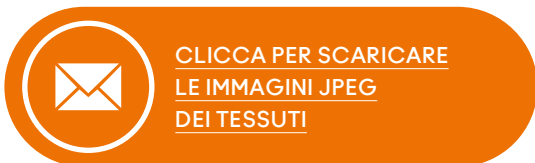
CAMELIA 447 135
 48% CO - 15% PL - 37% VI
 GR / ML 800
 MARTINDALE 25.000



DAMA L1522 09
 50% CO - 50% MD
 GR / ML 620
 MARTINDALE 50.000



DAMA L1522 12
 50% CO - 50% MD
 GR / ML 620
 MARTINDALE 50.000





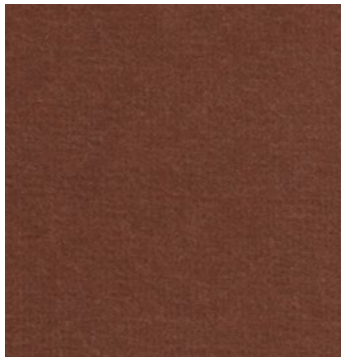
HORM



CASAMANIA

/ Collezione Nuance v.01

Categoria Prezzo **Top**



DAMA L1522 13
50% CO - 50% MD
GR / ML 620
MARTINDALE 50.000



DAMA L1522 18
50% CO - 50% MD
GR / ML 620
MARTINDALE 50.000



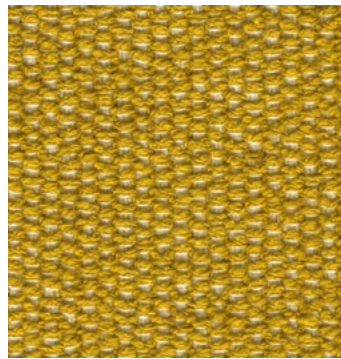
JASMIN 401 024
70% WO - 25% NY - 5% AF
GR / ML 516
MARTINDALE 100.000



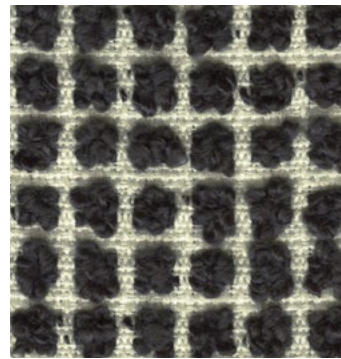
JASMIN 401 025
70% WO - 25% NY - 5% AF
GR / ML 516
MARTINDALE 100.000



JASMIN 401 029
70% WO - 25% NY - 5% AF
GR / ML 516
MARTINDALE 100.000



SABLE PL689 007
35% CO - 25% VI - 15% LI - 25% PL
GR / ML 865
MARTINDALE 50.000



BRIONNE 385 017
18% CO - 31% PL - 26% WO - 22% PC - 3% PA
GR / ML 740
MARTINDALE 40.000



DAMA L1522 10
50% CO - 50% MD
GR / ML 620
MARTINDALE 50.000



[CLICCA PER SCARICARE
LE IMMAGINI JPEG
DEI TESSUTI](#)



[CLICCA PER SCARICARE
LE SCHEDE TECNICHE](#)



HORM



CASAMANIA

/ Collezione Nuance v.01

Categoria Prezzo **Top**



DAMA L1522 19
50% CO - 50% MD
GR / ML 620
MARTINDALE 50.000



DAMA L1522 24
50% CO - 50% MD
GR / ML 620
MARTINDALE 50.000



DAMA L1522 25
50% CO - 50% MD
GR / ML 620
MARTINDALE 50.000



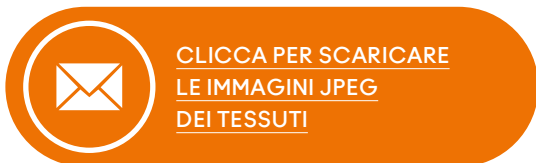
DAMA L1522 26
50% CO - 50% MD
GR / ML 620
MARTINDALE 50.000



JASMIN 401 012
70% WO - 25% NY - 5% AF
GR / ML 516
MARTINDALE 100.000



SABLE PL689 017
35% CO - 25% VI - 15% LI - 25% PL
GR / ML 865
MARTINDALE 50.000





HORM



CASAMANIA

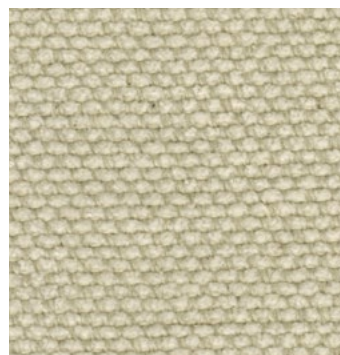
/
Collezione Nuance v.01
 Categoria Prezzo **Exclusive**



DALIA 450 010
 50% CO - 50% VI
 GR / ML 980
 MARTINDALE 20.000



LOTO 465 002
 68% CO - 32% VI
 GR / ML 1000
 MARTINDALE 20.000



LOTO 465 033
 68% CO - 32% VI
 GR / ML 1000
 MARTINDALE 20.000



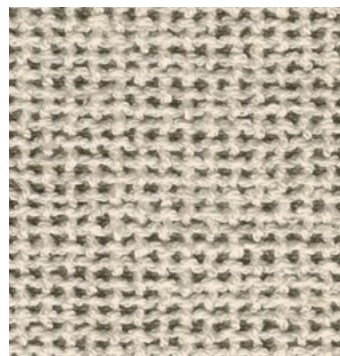
NARCISO 463 001
 35% CO - 20% PL - 45% VI
 GR / ML 950
 MARTINDALE 25.000



PLOT 65/18 100
 75% CO - 25% PL
 GR / ML 652
 MARTINDALE 40.000



RELLA 828 002
 28% WO - 26% PL - 24% PC - 18% CO - 4% PA
 GR / ML 855
 MARTINDALE 45.000



ROTAR 553 261F
 53% CO - 30% VI - 17% LI
 GR / ML 990
 MARTINDALE 35.000



DALIA 450 009
 50% CO - 50% VI
 GR / ML 980
 MARTINDALE 20.000



[CLICCA PER SCARICARE
 LE IMMAGINI JPEG
 DEI TESSUTI](#)



[CLICCA PER SCARICARE
 LE SCHEDE TECNICHE](#)



HORM



CASAMANIA

20

/ Collezione Nuance v.01

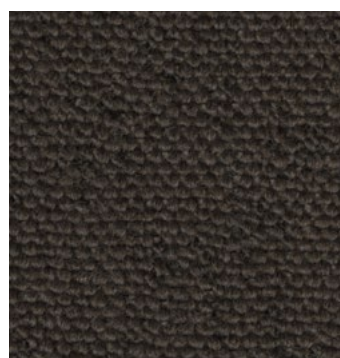
Categoria Prezzo **Exclusive**



DALIA 450 011
50% CO - 50% VI
GR / ML 980
MARTINDALE 20.000



DALIA 450 021
50% CO - 50% VI
GR / ML 980
MARTINDALE 20.000



IBISCO 443 443
15% CO - 35% PC - 10% PL - 40% VI
GR / ML 950
MARTINDALE 50.000



LOTO 465 031
68% CO - 32% VI
GR / ML 1000
MARTINDALE 20.000



NARCISO 463 002
35% CO - 20% PL - 45% VI
GR / ML 950
MARTINDALE 25.000



NARCISO 463 003
35% CO - 20% PL - 45% VI
GR / ML 950
MARTINDALE 25.000



RELLA 828 004
28% WO - 26% PL - 24% PC - 18% CO - 4% PA
GR / ML 855
MARTINDALE 45.000



ROTAR 553 200 F
53% CO - 30% VI - 17% LI
GR / ML 990
MARTINDALE 35.000



[CLICCA PER SCARICARE
LE IMMAGINI JPEG
DEI TESSUTI](#)



[CLICCA PER SCARICARE
LE SCHEDE TECNICHE](#)



HORM



CASAMANIA

/
Collezione Nuance v.01
 Categoria Prezzo **Exclusive**



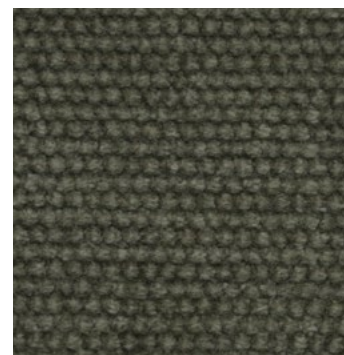
ROTAR 553 200 R
 53% CO - 30% VI - 17% LI
 GR / ML 990
 MARTINDALE 35.000



ROTAR 553 261R
 53% CO - 30% VI - 17% LI
 GR / ML 990
 MARTINDALE 35.000



DALIA 450 002
 50% CO - 50% VI
 GR / ML 980
 MARTINDALE 20.000



DALIA 450 003
 50% CO - 50% VI
 GR / ML 980
 MARTINDALE 20.000



IBISCO 443 013
 15% CO - 35% PC - 10% PL - 40% VI
 GR / ML 950
 MARTINDALE 50.000



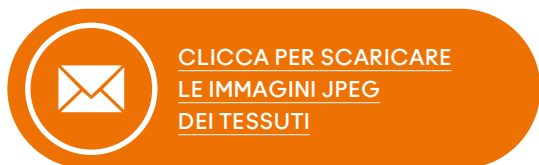
IBISCO 443 016
 15% CO - 35% PC - 10% PL - 40% VI
 GR / ML 950
 MARTINDALE 50.000



ROTAR 553 040 F
 53% CO - 30% VI - 17% LI
 GR / ML 990
 MARTINDALE 35.000



ROTAR 553 040 R
 53% CO - 30% VI - 17% LI
 GR / ML 990
 MARTINDALE 35.000





HORM



CASAMANIA

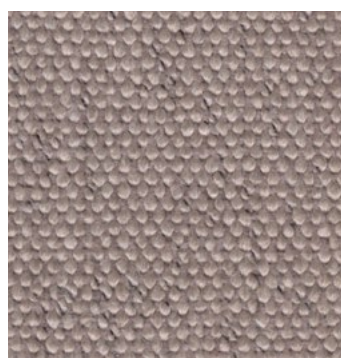
22

/ Collezione Nuance v.01

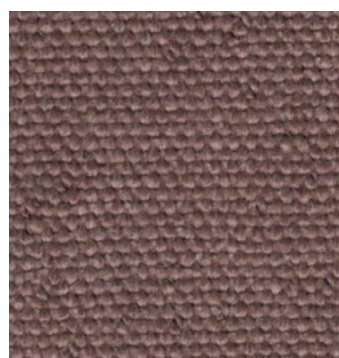
Categoria Prezzo **Exclusive**



IBISCO 443 014
15% CO - 35% PC - 10% PL - 40% VI
GR / ML 950
MARTINDALE 50.000



IBISCO 443 017
5% CO - 35% PC - 10% PL - 40% VI
GR / ML 950
MARTINDALE 50.000



IBISCO 443 018
5% CO - 35% PC - 10% PL - 40% VI
GR / ML 950
MARTINDALE 50.000



IBISCO 443 119
5% CO - 35% PC - 10% PL - 40% VI
GR / ML 950
MARTINDALE 50.000



[CLICCA PER SCARICARE
LE IMMAGINI JPEG
DEI TESSUTI](#)



[CLICCA PER SCARICARE
LE SCHEDE TECNICHE](#)



HORM



CASAMANIA

/ Collezione Nuance v.01

Categoria Prezzo **Ecopelle**



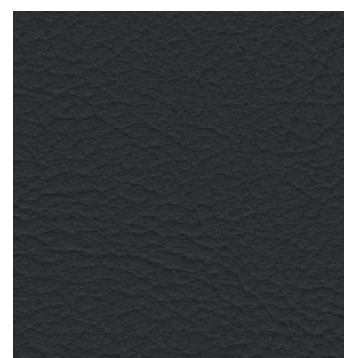
VALENCIA 107 0001 PRALINE
100% VYNIL
GR / ML 650
MARTINDALE 300.000



VALENCIA 107 0002 COGNAC
100% VYNIL
GR / ML 650
MARTINDALE 300.000



VALENCIA 107 1049 LEINEN
100% VYNIL
GR / ML 650
MARTINDALE 300.000



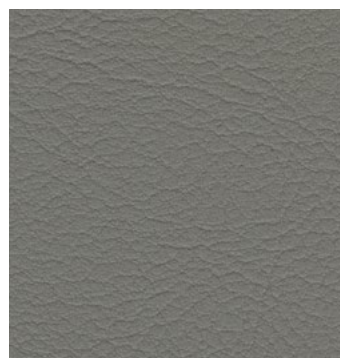
VALENCIA 107 3068 MARINE
100% VYNIL
GR / ML 650
MARTINDALE 300.000



VALENCIA 107 4003 GRAPHITE
100% VYNIL
GR / ML 650
MARTINDALE 300.000



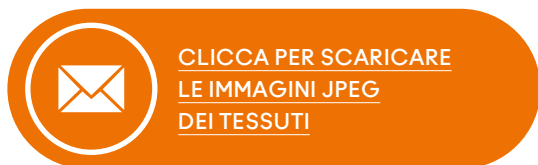
VALENCIA 107 4042 TITAN
100% VYNIL
GR / ML 650
MARTINDALE 300.000



VALENCIA 107 4045 PERLE
100% VYNIL
GR / ML 650
MARTINDALE 300.000



VALENCIA 107 5002 MOSS
100% VYNIL
GR / ML 650
MARTINDALE 300.000





HORM



CASAMANIA

24

/ Collezione Nuance v.01

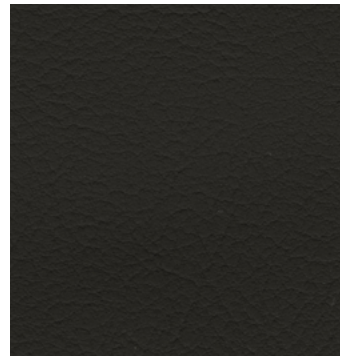
Categoria Prezzo **Ecopelle**



VALENCIA 107 8032 WEISS
100% VYNIL
GR / ML 650
MARTINDALE 300.000



VALENCIA 107 9001 SUMATRA
100% VYNIL
GR / ML 650
MARTINDALE 300.000



VALENCIA 107 9035 SCHWARTZ
100% VYNIL
GR / ML 650
MARTINDALE 300.000



[CLICCA PER SCARICARE
LE IMMAGINI JPEG
DEI TESSUTI](#)



[CLICCA PER SCARICARE
LE SCHEDE TECNICHE](#)

