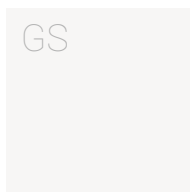


BA
SI
C



white 117



ivory 602



beige 804



beige 212



yellow 612



orange 388



orange 822



brown 92



red 204



red 550



marsala 759



lilac 404



violet 43



violet 41



light blue 5513



light blue 150



light blue 840



blue 376



green 662



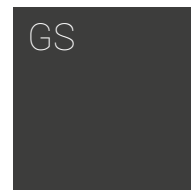
green 208



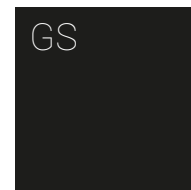
light grey 617



grey 87



anthracite 870



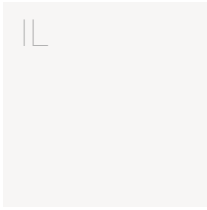
*black 210

*DISPONIBILE SOLO PER ALCUNI ARTICOLI
AVAILABLE ONLY FOR SOME ITEMS

Importante: Le seguenti tabelle colori e finiture sono in vigore dal 01/02/2018, e annullano e sostituiscono il materiale in vostro possesso.

Important: The following colour charts and finishes are in effect from 1st February 2018 and cancel and replace the material in your possession.

ILLUMINABLE



transparent 110



yellow 612



orange 388



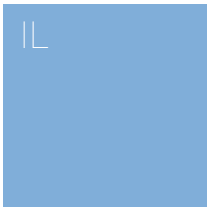
orange 822



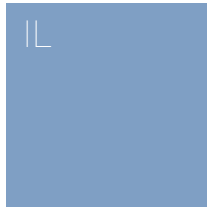
red 204



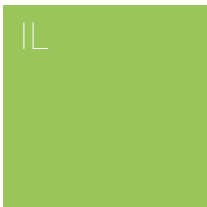
lilac 404



light blue 5513



light blue 150

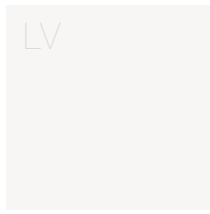


green 662

Importante: Le seguenti tabelle colori e finiture sono in vigore dal 01/02/2018, e annullano e sostituiscono il materiale in vostro possesso.

Important: The following colour charts and finishes are in effect from 1st February 2018 and cancel and replace the material in your possession.

SSOGL
SSYL



white 117



light grey 617



beige 804



black 210



red 550

Importante: Le seguenti tabelle colori e finiture sono in vigore dal 01/02/2018, e annullano e sostituiscono il materiale in vostro possesso.

Important: The following colour charts and finishes are in effect from 1st February 2018 and cancel and replace the material in your possession.

DIR
ECT
PAI
NTI
NG



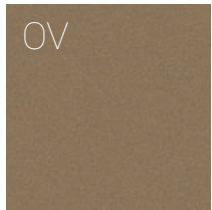
pink 3380



gold 52



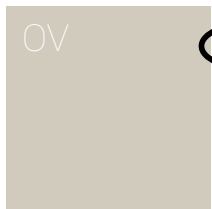
light blue 150



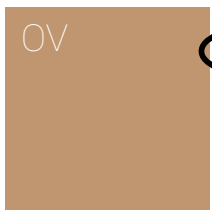
brown 156



pearl gray 180



dark pearl 162



pearly copper 177

Finitura OV:
Verniciatura diretta sulla superficie liscia o ruvida del prodotto.
OV finishing: Painting direct done on the smooth or rough surface of the product

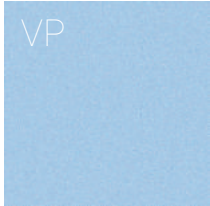
Importante: Le seguenti tabelle colori e finiture sono in vigore dal 01/02/2018, e annullano e sostituiscono il materiale in vostro possesso.

Important: The following colour charts and finishes are in effect from 1st February 2018 and cancel and replace the material in your possession.

V
I
N
T
A
G
E

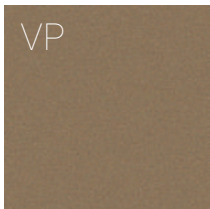


pink 3380

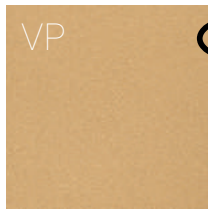


light blue 150

Finitura VP disponibile solo per
Funnel, Bell e Agata
Finishing available only for
Funnel, Bell and Agata

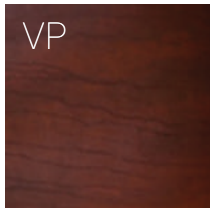


brown 156

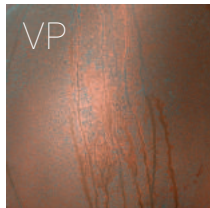


gold 52

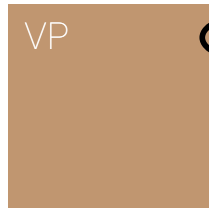
NEW



rust 500

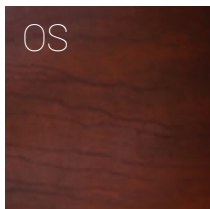


copper 101

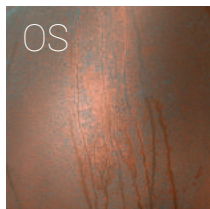


pearly copper 177

NEW



rust 500



copper 101

Importante: Le seguenti tabelle colori e finiture sono in vigore dal 01/02/2018, e annullano e sostituiscono il materiale in vostro possesso.

Important: The following colour charts and finishes are in effect from 1st February 2018 and cancel and replace the material in your possession.

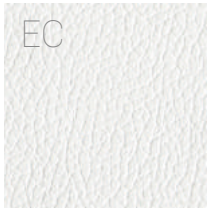
ECCO

LEEA

TH

ER_

EVA



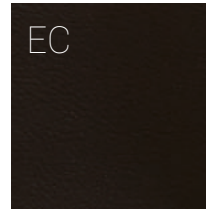
white 6



grey 4008



nut brown 9311



black 991



glazed grey 1050



sand 1051

Finitura EVA disponibile solo per Modì Zero
Finishing EVA available only for Modì Zero

Importante: Le seguenti tabelle colori e finiture sono in vigore dal 01/02/2018, e annullano e sostituiscono il materiale in vostro possesso.

Important: The following colour charts and finishes are in effect from 1st February 2018 and cancel and replace the material in your possession.

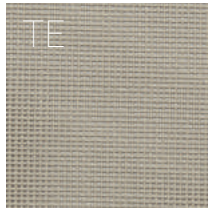
TE

XT

ILE



white 0108

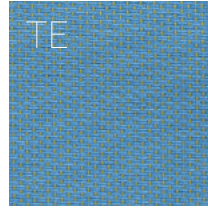


dove 0711

Disponibili solo per Netwood
Available only for Netwood

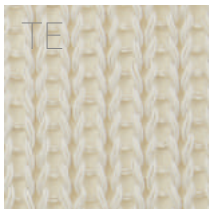


ivory 5161

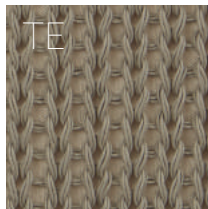


light blue 4039

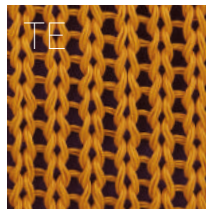
Disponibili solo per 2054 imbottito
Available only for upholstered 2054



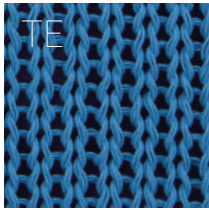
ivory 0139



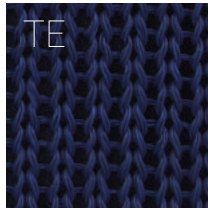
dove 0721



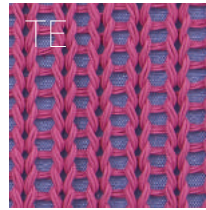
orange 1136



turquoise 4214

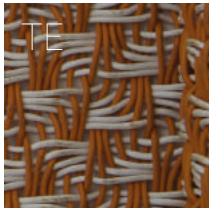


blue 4193

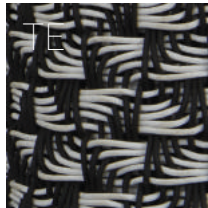


lilac 2213

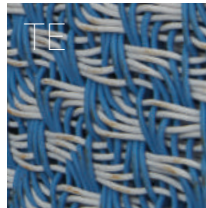
Disponibili solo per Morfeo
Available only for Morfeo



white/orange 1213



white/black 04A4



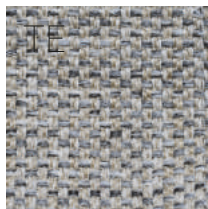
white/light blue 4231

Disponibili solo per Teo
Available only for Teo



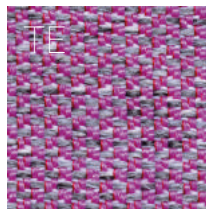
melange 02
white

NEW



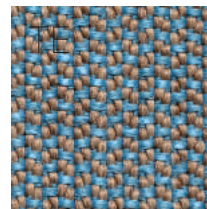
melange 63
grey

NEW



melange 21 1
lilac

NEW



melange 24 2
light blue

NEW

Disponibili solo per Samurai,
Nova S Divano e poltrona imbottiti
Available only for Samurai, Nova S
upholstered sofa and armchair

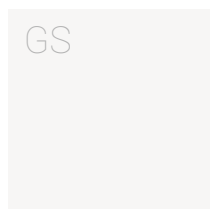
Importante: Le seguenti tabelle colori e finiture sono in vigore dal 01/02/2018, e annullano e sostituiscono il materiale in vostro possesso.

Important: The following colour charts and finishes are in effect from 1st February 2018 and cancel and replace the material in your possession.

SAMURAI Abbinamenti possibili / Possible combinations

GS - Colori struttura
Structure colours

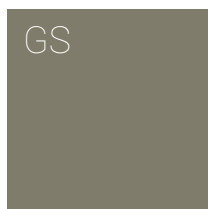
Colori imbottito - TE
Upholstered colours



white 117



light grey 617



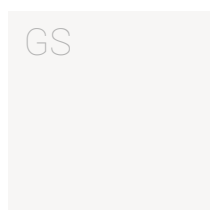
beige 212



light blue 840



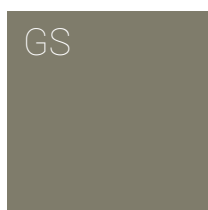
melange 02
white



white 117



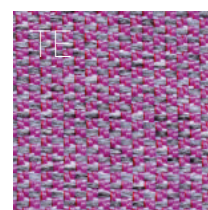
light grey 617



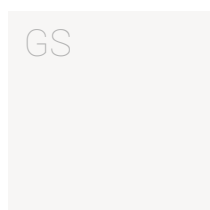
beige 212



lilac 404



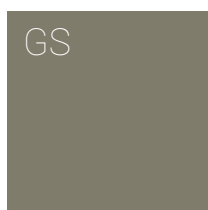
melange 21 1
lilac



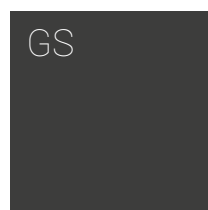
white 117



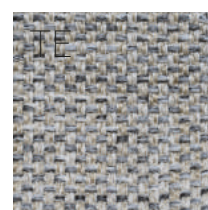
light grey 617



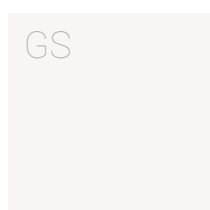
beige 212



anthracite 870



melange 63
grey



white 117



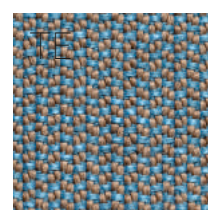
light grey 617



beige 212



light blue 840



melange 24 2
light blue

Importante: Le seguenti tabelle colori e finiture sono in vigore dal 01/02/2018, e annullano e sostituiscono il materiale in vostro possesso.

Important: The following colour charts and finishines are in effect from 1st February 2018 and cancel and replace the material in your possession.

SAMURAI Abbinamenti possibili / Possible combinations

OV - Colori struttura
Structure colours

Colori imbottito - TE
Upholstered colours



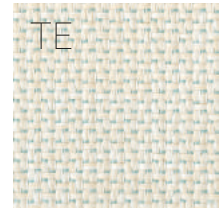
light blue 150



brown 156



pearl gray 180



melange 02
white



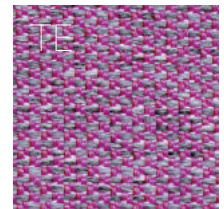
pink 3380



dark pearl 162



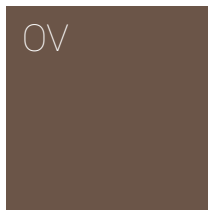
pearl gray 180



melange 21 1
lilac



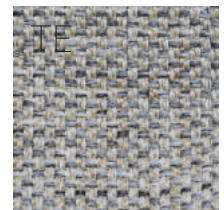
pink 3380



dark pearl 162



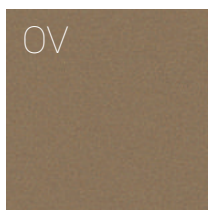
pearl gray 180



melange 63
grey



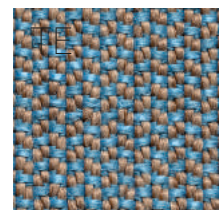
light blue 150



brown 156



dark pearl 162



melange 24 2
light blue

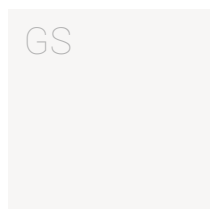
Importante: Le seguenti tabelle colori e finiture sono in vigore dal 01/02/2018, e annullano e sostituiscono il materiale in vostro possesso.

Important: The following colour charts and finishes are in effect from 1st February 2018 and cancel and replace the material in your possession.

NOVA DIVANO S / POLTRONA Abbinamenti possibili Possible combinations

GS - Colori struttura
Structure colours

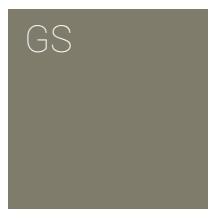
Colori imbottito - TE
Upholstered colours



white 117



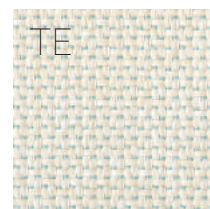
light grey 617



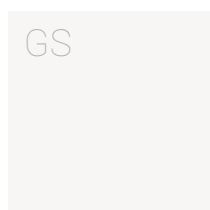
beige 212



light blue 840



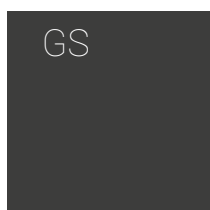
melange 02
white



white 117



light grey 617



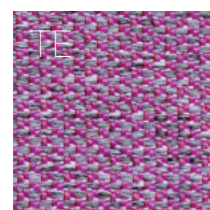
anthracite 870



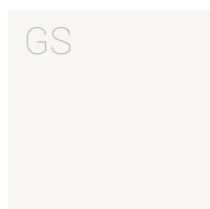
lilac 404



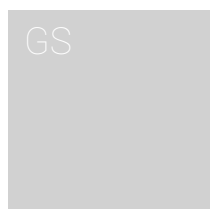
violet 43



melange 21 1
lilac



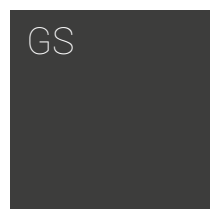
white 117



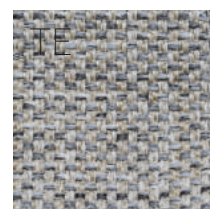
light grey 617



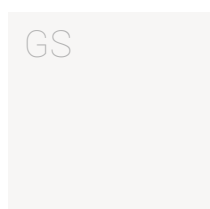
grey 87



anthracite 870



melange 63
grey



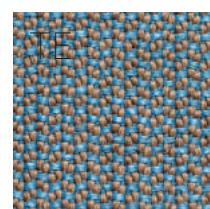
white 117



beige 804

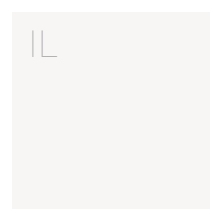


beige 212



melange 24 2
light blue

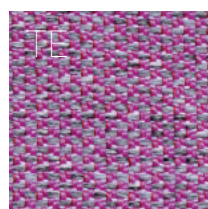
IL - Colori struttura
Structure colours



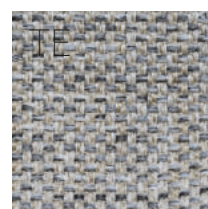
transparent 110



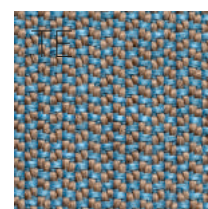
melange 02
white



melange 21 1
lilac



melange 63
grey



melange 24 2
light blue

Importante: Le seguenti tabelle colori e finiture sono in vigore dal 01/02/2018, e annullano e sostituiscono il materiale in vostro possesso.

Important: The following colour charts and finishes are in effect from 1st February 2018 and cancel and replace the material in your possession.

NOVA DIVANO S / POLTRONA Abbinamenti possibili Possible combinations

OV - Colori struttura Structure colours

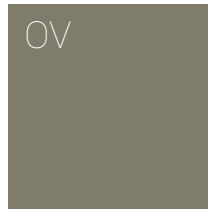
Colori imbottito - TE Upholstered colours



light blue 150



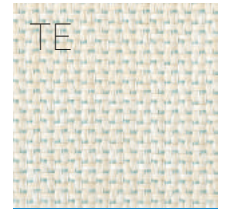
pearly copper 177



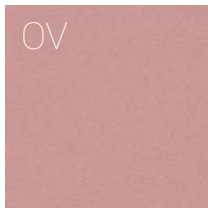
pearl gray 180



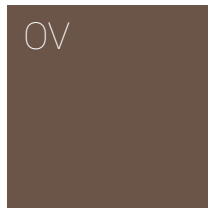
dark pearl 162



melange 02
white



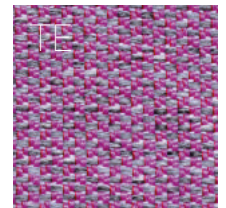
pink 3380



dark pearl 162



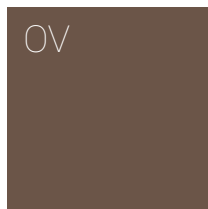
pearl gray 180



melange 21 1
lilac



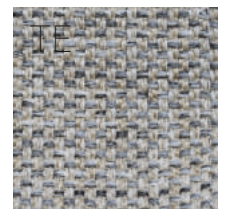
pearly copper 177



dark pearl 162



pearl gray 180



melange 63
grey



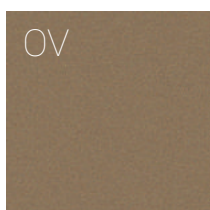
light blue 150



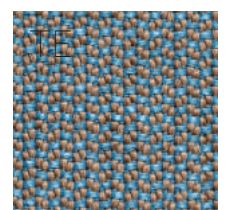
pearly copper 177



pearl gray 180



brown 156




melange 24 2
light blue

Importante: Le seguenti tabelle colori e finiture sono in vigore dal 01/02/2018, e annullano e sostituiscono il materiale in vostro possesso.

Important: The following colour charts and finishes are in effect from 1st February 2018 and cancel and replace the material in your possession.

KEY

Finitura gofrata Basic finishing	
Finitura lucida verniciata Glossy painted finishing	
Verniciatura diretta sulla superficie Direct painting on the surface	
Finitura Ossidata Oxidized finishing	
Finitura vintage Vintage finishing	
Illuminabile Illuminable	
Stampa rotazionale Rotomoulding	
Verniciatura Painting	
Rivestimento in pelle/tessuti Fabric/Eco-leather upholstery	
Lavorazione del metallo Metal manufacturing	
Stampa termoformata Thermoformed moulded	
Ecopelle Eco-leather	
Tessuto da esterno Fabric	
Eva	
Imbottitura con sfere di EPS EPS peals padding	
Imbottitura Dry Feel Dry Feel padding	
Imbottitura in poliuretano espanso Expanded polyurethane padding	

KEY

E27	
RGBW E27	
Led G9	
RGBW Strip / Led	
Strip / Led luce bianca White Strip / Led	
Tubo fluorescente Fluorescent tube	
Base di ricarica a induzione Induction recharging base	
Cavo di ricarica Cable rechargeable	
No luce No light	
Piano in HPL HPL top	
Vetro temperato Tempered glass	
Piano in Corian Corian top	
Acciaio Inox Stainless steel	
Metallo Metal	
Alluminio Aluminum	
Legno Wood	
Sistema portatile Porting system	