



COLOURS & FABRICS

COLORI STANDARD ☺

STANDARD COLOURS ☺



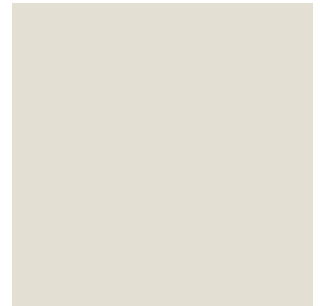
Bianco / WH



Neutro Luce / NT



Neve di San Candido / IWH



Gesso di Bologna / WH5



More di Rovo / BK



Pietra delle Dolomiti / GG



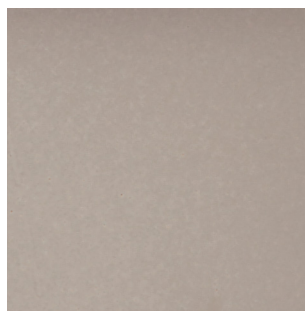
Salvia di Sardegna / SAV



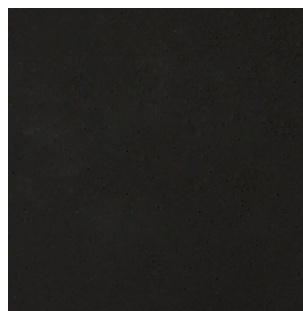
Verde Pavone / WP



Pietra di Matera / IV AV



Tortora di Torino / TO



Antracite di Sardegna / ANT



Origano di Sardegna / VMA

Eventuali disuniformità di colore sono legate al processo tecnologico ed alla finitura manuale dei prodotti:

- Colori studiati e appositamente prodotti nei laboratori interni Serralunga.
- ☺ Clean Fighter: Speciale miscela studiata da Serralunga per rendere più facile la pulizia di qualsiasi prodotto con colorazione standard.

Eventual colour discrepancies are linked to the technological process and to the manual finishing of the products:

- Colours are studied and properly realized in Serralunga's laboratories.
- ☺ Clean Fighter: Special mixture studied by Serralunga to make the cleaning of products in standard finish, easier.

* Irregular spatula finish not uniform
* Finitura spatolata non uniforme

COLORI STANDARD ☺

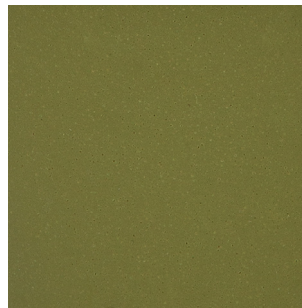
STANDARD COLOURS ☺



Corallo / COL



Apple Green / AG



Olive di Cerignola / VOC



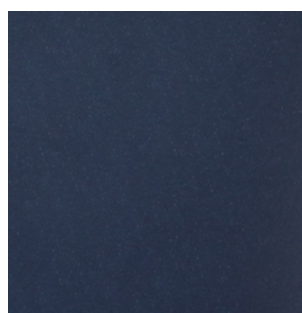
Rosso / RO



Acqua della Maddalena / AQM



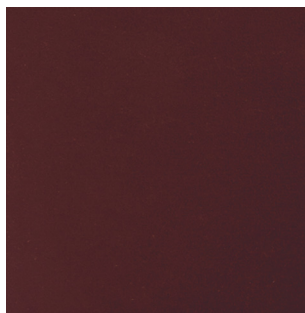
Azzurro di Provenza / AZP



Blu di Portofino / BLP



Castoro / TC2



Terracotta scura / TC4



Terracotta Toscana / T



Impruneta classica / IMP*



Castagno / CA



Eventuali disuniformità di colore sono legate al processo tecnologico ed alla finitura manuale dei prodotti:

- Colori studiati e appositamente prodotti nei laboratori interni Serralunga.
- ☺ Clean Fighter: Speciale miscela studiata da Serralunga per rendere più facile la pulizia di qualsiasi prodotto con colorazione standard.

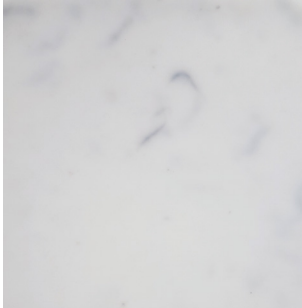
Eventual colour discrepancies are linked to the technological process and to the manual finishing of the products:

- Colours are studied and properly realized in Serralunga's laboratories.
- ☺ Clean Fighter: Special mixture studied by Serralunga to make the cleaning of products in standard finish, easier.

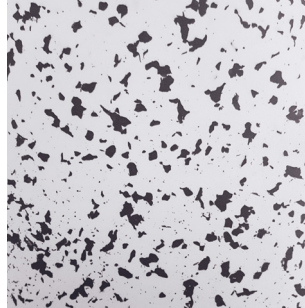
* Irregular spatula finish not uniform
* Finitura spatolata non uniforme

NUANCES SPECIALI ☹

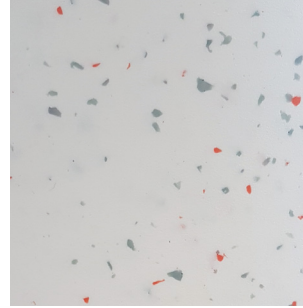
SPECIAL NUANCES ☹



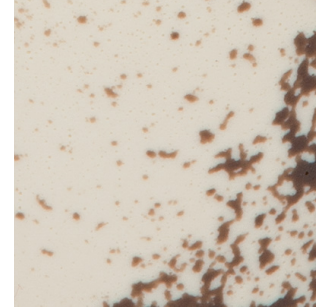
Marmo / MAR



Patchy / WB



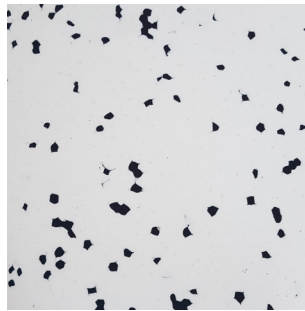
Patchy / WAC



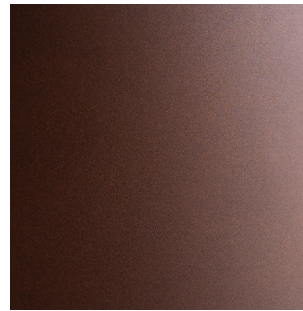
Coffee Delave / ICA *



Eco / ECO



Dalmata / DAL



Corten / COR *

Eventuali disuniformità di colore sono legate al processo tecnologico ed alla finitura manuale dei prodotti:

- Colori studiati e appositamente prodotti nei laboratori interni Serralunga.
- ☺ Clean Fighter: Speciale miscela studiata da Serralunga per rendere più facile la pulizia di qualsiasi prodotto con colorazione standard.

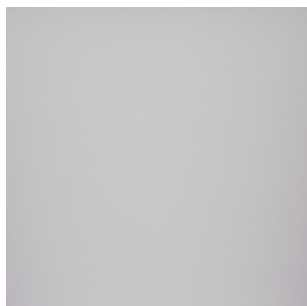
Eventual colour discrepancies are linked to the technological process and to the manual finishing of the products:

- Colours are studied and properly realized in Serralunga's laboratories.
- ☺ Clean Fighter: Special mixture studied by Serralunga to make the cleaning of products in standard finish, easier.

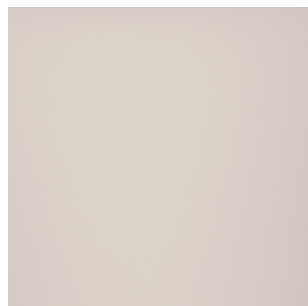
* Irregular spatula finish not uniform
* Finitura spatolata non uniforme

COLORI LACCATI LUCIDI

GLOSSY LACQUERED COLOURS



Bianco / LWH



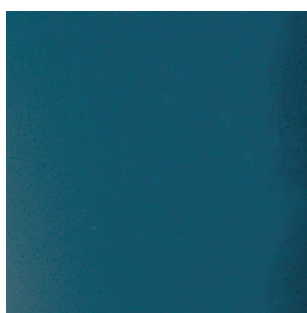
Milk / LMI



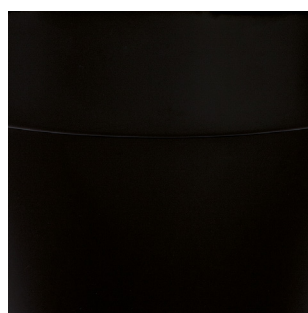
Zinco / LZN



Antracite / LAN



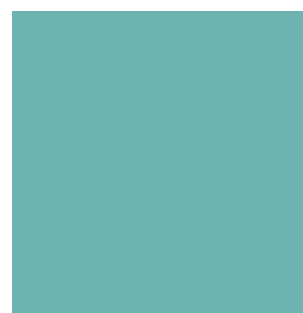
Verde Pavone / LWP



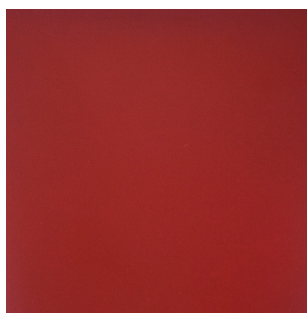
Nero / LBK



Grigio 150 / LGS



Azzurro Audrey / LAT



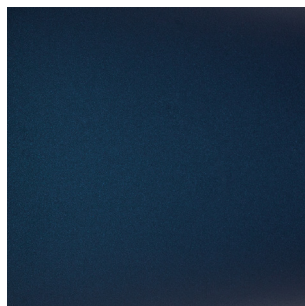
Rosso / LRO

COLORI LACCATI METALLIZZATI OPACHI

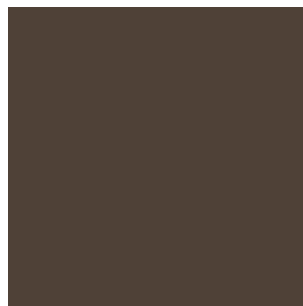
MATT METALLIC LACQUERED COLOURS



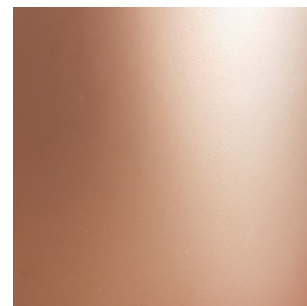
Azzurro / LAM



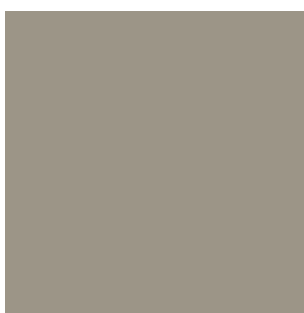
Blu / LBM



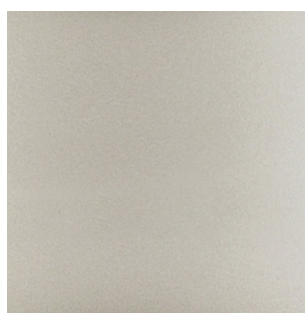
Grigio scuro / LGM



Rame / LCM



Titanio / LTM



Ottone / LOM



Sabbia / LSM

Finitura manuale del prodotto realizzata con vernice acrilica o poliuretanica, fissata a forno e successivamente lucidata.

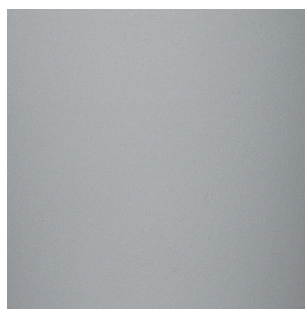
Hand made finishing of the product made with acrylic or polyurethane paint, oven-fixed and then polished.

COLORI LACCATI METALLIZZATI LUCIDI

GLOSSY METALLIC LACQUERED COLOURS



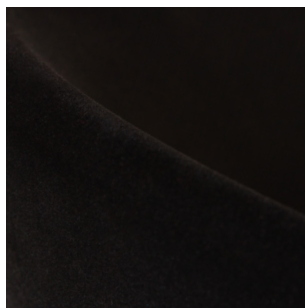
Oro / LGO



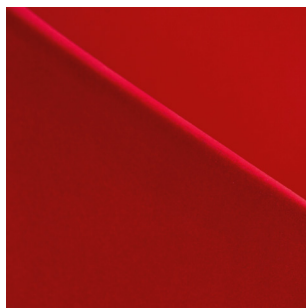
Argento / LCH

FINITURA VELVETY

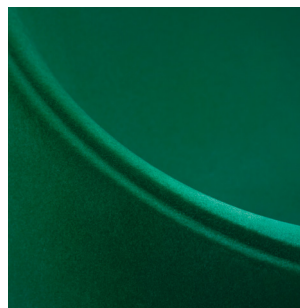
VELVETY FINISHING



Onyx / VBK



Ruby / VRO



Emerald / VVE

Sentirsi nel velluto anche fuori casa con Velvety, la nuova finitura per l'arredo design di Serralunga. Il feeling sofisticato del velluto e la bellezza funzionale del made in Italy: l'idea e la forma si sposano in una nuova esperienza tattile che sorprende i sensi.

La finitura Velvety, come il velluto, conferisce lustro immediato a ciò che lo circonda; nel tempo, ideale per suggerire lo stile vintage.

Feeling in velvet even outside home with Velvety, the new Serralunga's finish for design furniture. The sophisticated feeling of velvet and the functional beauty of made in Italy: idea and shape are combined in a new tactile experience that surprises the senses.

The Velvety finishing, such as velvet, gives immediate prestige to what surrounds it; in the time, ideal to suggest the vintage style.

MATERIALE:

LLDPE

Rivestimento in poliammide

MATERIAL :

LLDPE

Polyamide coating

CARATTERISTICHE:

100% Riciclabile

Resistenza ai raggi UV ed alle temperature

CHARACTERISTICS :

100% recyclable

resistant to UV rays and temperatures

FINITURA MOLESKIN

MOLESKIN FINISHING



Moleskin Black / MBK



Moleskin Rose / MTC



*Moleskin Mediterranean /
MWP*

Finitura artigianale sviluppata nei laboratori Serralunga. Moleskin è una lavorazione artigianale che viene dalla storia di Serralunga e nello specifico dall'esperienza nella lavorazione del cuoio.

Con lo spirito di ricerca ed innovazione che da sempre caratterizza l'evoluzione dell'Azienda presentiamo con orgoglio alcuni nostri prodotti con un aspetto inedito alla vista ed inaspettato al tatto.

Una lavorazione che richiama i pregiati tessuti in fustagno, tessuti robusti, caldi e confortevoli, superfici da toccare e pettinare come una pelle di daino.

Con Moleskin la resistenza e la qualità dell'arredo outdoor di Serralunga si veste di una raffinata e nel contempo tradizionale eleganza.

Handcrafted finish developed in Serralunga laboratories. Moleskin is a craftsmanship that comes from the history of Serralunga and specifically from the experience in leather processing.

With the spirit of research and innovation that has always characterized the evolution of the company, we proudly present some of our products with an unprecedented appearance at the sight and unexpected to the touch.

A process that recalls the precious moleskin fabrics, sturdy, warm and comfortable fabrics, surfaces to touch and comb like a deerskin.

With Moleskin, the strength and quality of Serralunga's outdoor furniture get dressed in a refined and at the same time traditional elegance.

CARATTERISTICHE:

100% riciclabile

Resistente alle temperature

Di facile manutenzione

Disponibile in 2 colori nero e rosè

CHARACTERISTICS :

100% recyclable

Resistant to temperatures

Easy maintenance

Available in 2 colours black and rosy

TESSUTI FABRICS



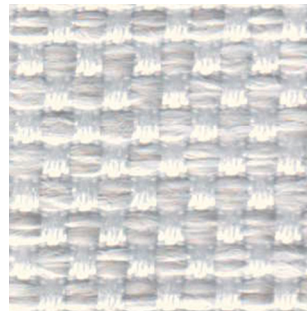
Half Moon / GREECE



100% Polypropylene



Half Moon / WHITE



Half Moon / ICE



PP 58% PL 42%

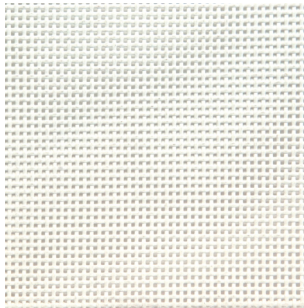


Sea / WHITE

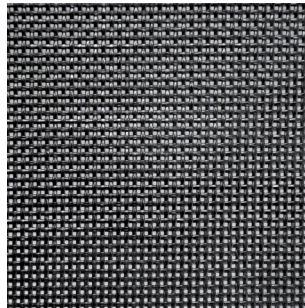


89% PVC
11% PA

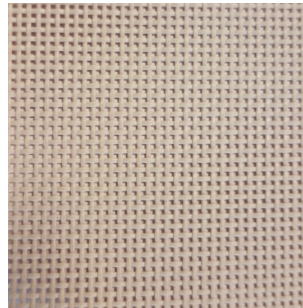
TESSUTI FABRICS



Batyline / WHITE



Batyline / BLACK



Batyline / DOVE



100% PVC coated polyester
mod. Lazy / mod. La Regista

LEGEND / LEGENDA



Chlorine resistant /
Resistente al cloro



Sea salt resistant /
Resistente al sale



Fungi and bacterial resistant /
Resistenza a funghi e batteri



Outdoor use suitable /
Adatto ad uso esterno



Phthalate free /
Senza ftalati



IMO MED mod. B + D



Fire retardant /
Resistente al fuoco

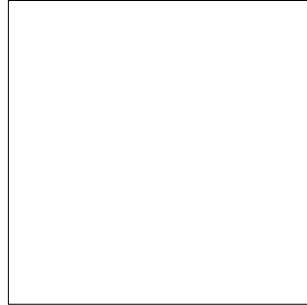


Medical use suitable /
Adatto ad uso medico

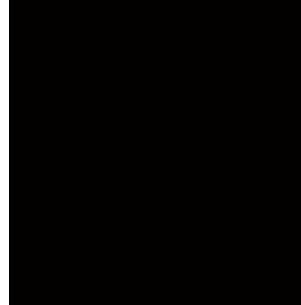
COLORI DOLCEVITA

DOLCEVITA COLOURS

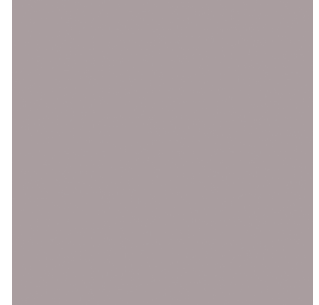
SEDUTA / SEAT



White Polyurethane

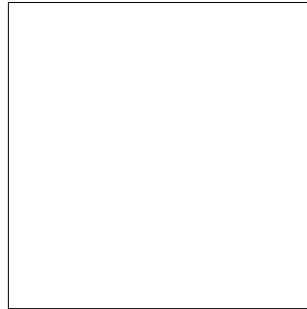


Black Polyurethane



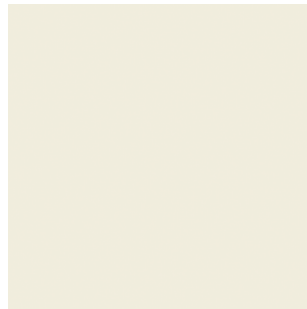
Dove Polyurethane

STRUTTURA / FRAME



White

COPRI DIVANI / SOFA COVERS



Beige

Poiana
20% polyuretane
80% polyester

Poliuretano della seduta ha superato i seguenti test:

- Classe 11M UNI 9175 (1987) - UNI 9175/FA1 (1994).
- Invecchiamento accelerato con lampada UV ASTM G 154-06: 1500 ore
- Solidità del colore allo strofinio EN ISO 11640:1998 (bianco: 100 cicli, altri colori: 500 cicli)
- Protezione del consumatore. Il regolamento sui mobili e l'arredamento (incendio) (sicurezza) 1988 n. 1324 Allegato 1 - Parte 1 e modifica n°2358 (1989)
- Prova di infiammabilità per schiuma poliuretanic in forma di lastra o cuscino: prova superata.

Fire-retardant in accordance with the following standards:

- Class 11M UNI 9175 (1987) - UNI 9175/FA1 (1994).
- Accelerated ageing with UV ASTM G 154-06 lamp: 1500 hours
- Colour fastness to cycles of to-and-fro rubbing ISO 11640:1998 (white: 100 cycles, other colours: 500 cycles)
- Consumer Protection. The Furniture and Furnishing (Fire) (Safety) Regulations 1988 No. 1324 Schedule 1. Part 1 and Amendment n° 2358 (1989)
- Ignitability test for polyurethane foam in slab or cushion form: test passed.

IMBOTTITURA CUSCINO:

fibra PPT, poliuretano reticolato, tessuto a maglia aperta.

Versione ignifuga classe 11M su richiesta.

CUSHION PADDING:

PPT fiber, crosslinked polyurethane, mesh fabric.

Fire-retardant version 11M class upon request

SUPERFICI

SURFACES



 LISCIA / SMOOTH



 GRAFFIATA / SCRATCHED



 GRANIGLIA



 CASSERO



 THE VASES



 MEMORY POT